

# Champion®

The Dishwashing Machine Specialists

Project \_\_\_\_\_  
Item No. \_\_\_\_\_  
Quantity \_\_\_\_\_

## STANDARD FEATURES

- Automatic tank fill
- Rack conveyor chain drive
- Common utility connections
- Door safety switches
- Electric eye rinse saver
- Energy Sentinel (idle pump shut-off)
- Enclosure panels on front and back of machine
- Supervision of re-assembly
- Low-water tank heat protection
- Splash protection
- Stainless steel heavy-gauge construction, including base and feet
- Remote start-stop station
- Tank heat, choice of electric, steam coils or steam injectors
- Top-mounted controls
- Oval configuration

CC

Circular Conveyor



## SPECIFIER STATEMENT

Specified unit will be Champion model CC circular conveyor dishwashing machine. Features include stainless steel heavy gauge construction, start stop station, top mounted electronic controls, automatic tank fill, and rack advance chain.

1 year parts and labor warranty.

Champion Industries, Inc.  
3765 Champion Blvd., Winston-Salem, NC 27105  
Tel: 336/661-1556 Fax: 336/661-1979

[www.championindustries.com](http://www.championindustries.com)

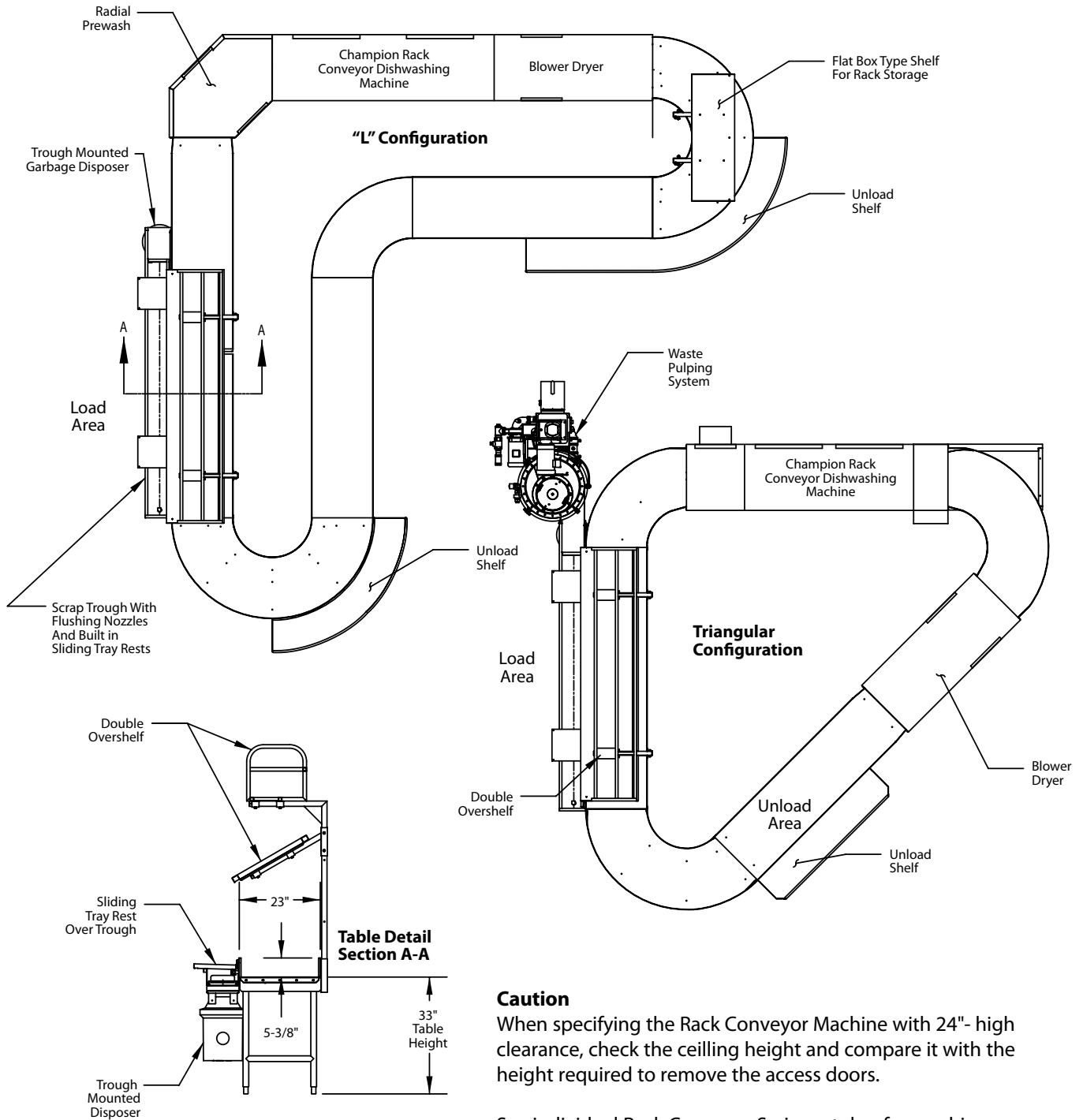


Circular Conveyor  
Dishwashing Machine

# Champion<sup>®</sup>

The Dishwashing Machine Specialists

## CC Series Additional Configurations and Ordering Information



'USGBC' and related logo is a trademark owned by the U.S. Green Building Council and is used by permission. Due to an ongoing value analysis program at Champion, specifications contained in this catalog are subject to change without notice.

## CC Series Ordering Information

### SPECIFICATIONS

#### Capacities

Racks per hr. (NSF rated)	208 to 356
Conveyor Speed (ft./min.)	5.8 to 9.9

#### Motor horsepower

Drive	1/2 or 3/4
Prewash 22"	1
Radius	1
PR-36	1
Wash	2
Rinse	2

#### Water consumption

Gallons per hour	112 to 300
------------------	------------

#### Temperatures °F

Wash	150
Rinse	160
Final rinse	180

#### Venting\*

Load end with prewash (min. cfm)	150
Load end (min. cfm)	200
Unload end (min. cfm)	400

\* With blower-dryer, increase room ventilation by 600 cfm.

See individual Rack Conveyor Series catalog sheets for machine specifications, performances, utility connections and dimensions.

### Include the following information when ordering the CC Series Machine:

#### Rack Conveyor Machine Model Number

Using the Champion Rack Conveyor Machine catalog sheets, select the machine that meets your specific application.

#### Type of Prewash

If an alternate radial prewash or PR-36 prewash is needed, instead of the integral 22" prewash, please state your choice. (PR-36 is available for straight-through operation only.)

#### Direction of Operation

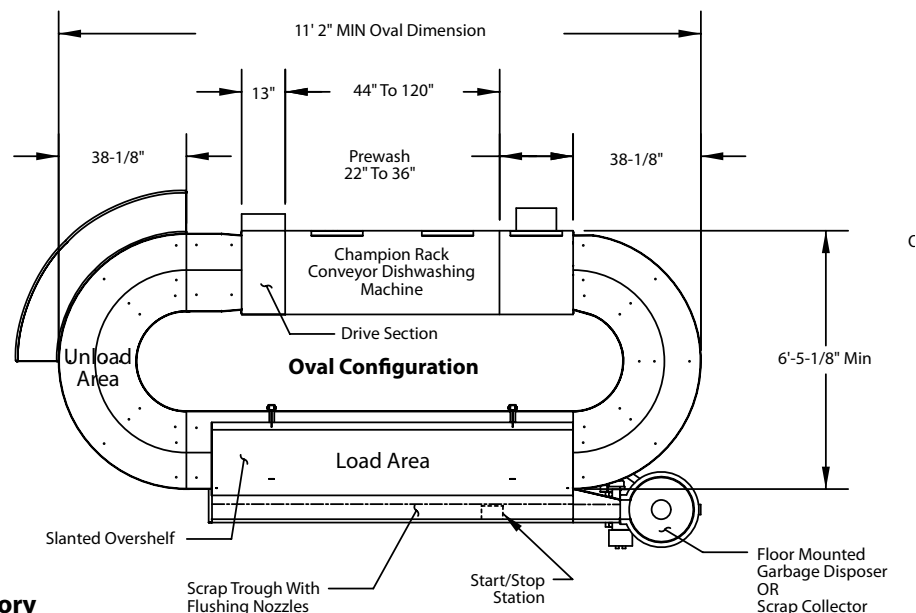
Specify the direction of CC operation, "clockwise" or "counter-clockwise."

#### Location of Access Doors

State whether the machine doors are on the outside or the inside of the circle.

#### Options

List the options required to complete your unique warehousing system!



Electrical- See Factory

<sup>1</sup>USGBC<sup>®</sup> and related logo is a trademark owned by the U.S. Green Building Council and is used by permission.

Due to an ongoing value analysis program at Champion, specifications contained in this catalog are subject to change without notice.

Champion Industries, Inc., 3765 Champion Blvd., Winston-Salem, NC 27105 • 336/661-1556 • Fax: 336/661-1979 • www.championindustries.com

**OPTIONS & ACCESSORIES**

- Additional start/stop station
- Additional table length (contact Factory)
- Blower-dryer with 48" tunnel, 2-Hp blower motor (steam or electric)
- Booster Heaters, stainless steel (completely interplumbed and interwired)
- Drain water tempering device
- Steam: 40° – 70° rise maximum
- Electric: 40° – 70° rise maximum
- Stainless steel scrap trough
- Built-in skate wheel assembly for scrap trough
- Cold water thermostat for prewash unit (requires separate cold water connection)
- Doors outside or inside the oval
- Electronic drive switch (stops drive motor if conveyor jams)
- Enclosure panels (other than standard)
- Hose reels, closed-type, mounted (requires separate hot and cold water connections)

**Prewash units:**

- 22" prewash
- 36" prewash
- Radial prewash unit (space-saving 90° turn), with external scrap basket
- High vertical clearance through machine, 24" to accommodate large ware
- Insulated hoods and lower panels (conserves heating energy and reduces noise level)
- Racks: specify dish or open racks
- Scrap trough with flushing nozzle(s) (Separate water and drain required)
- Shelving systems: slanted overshef, double overshef, flat box-type overshef, load or unload shelf
- Special table configurations (other than oval)
- Sinks: hand sink (17"x15"x13") and silverware soak sink (require separate hot and cold water and drain connections)
- Steam pressure regulating valve, unmounted
- Variable speed drive assembly
- Waste receptacle (in lieu of disposer)
- Water pressure regulating valve, unmounted (standard on machines with optional steam or electric booster heater)