

Champion[®]

The Dishwashing Machine Specialists

Project _____
Item No. _____
Quantity _____

P5-30 PULPER

STANDARD FEATURES

- Flatware saver
- Flushing valve to pump-motor seal
- Flexible draw latches on hood assembly
- Remote mounted control box with overload indicator lights and circuit breaker
- Removable, gasketless water extractor door
- Start/stop switch mounted on extractor
- Stainless steel tubular bullet feet legs 1-1/2" total adjustment
- Total stainless steel construction
- Water level control

P5-30

5 Hp - 30" Pulper
Waste Handling System



Photo is for general visual representation only. Please refer to specifications for the latest detailed product information.



OPTIONS & ACCESSORIES

- Recirculating pump
- Multiple trough configurations
- Extractor flushing system
- Spray Reel - 30ft. unmounted
- Automatic shutdown timer
- Deodorizer injector
- Remote mounted start-stop station (unmounted)
- Multiple trough configurations (9" & 12")

SPECIFIER STATEMENT

Specified unit will be Champion model P5-30 pulper waste handling system.

Features include: 5 hp with 30" diameter slurry chamber, flatware saver, three stationary blocks with four cutting surfaces each, two tool steel rotating shearing blades, large water extractor chamber with removable gasketless door and external drain handle. Constructed of Type 304 SST.

1 year parts and labor warranty.

Champion Industries, Inc.
2674 N. Service Road
Jordan Station, Ontario, Canada L0R 1S0
Tel: 800/263-5798 Fax: 905/562-4618

Champion Industries, Inc.
3765 Champion Blvd., Winston-Salem, NC 27105
Tel: 336/661-1556 Fax: 336/661-1979
www.championindustries.com

Champion[®]

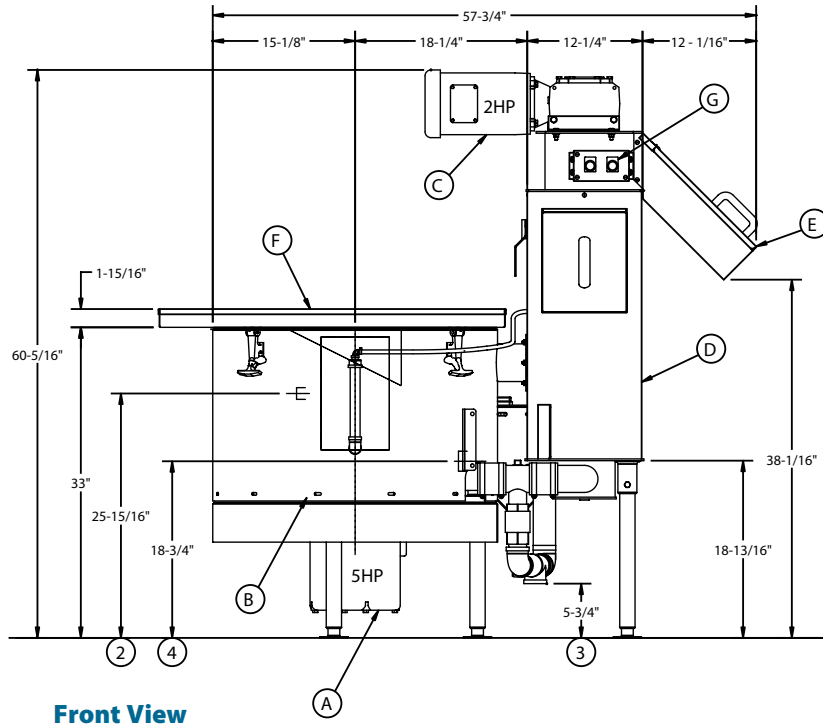
The Dishwashing Machine Specialists

P5-30 PULPER

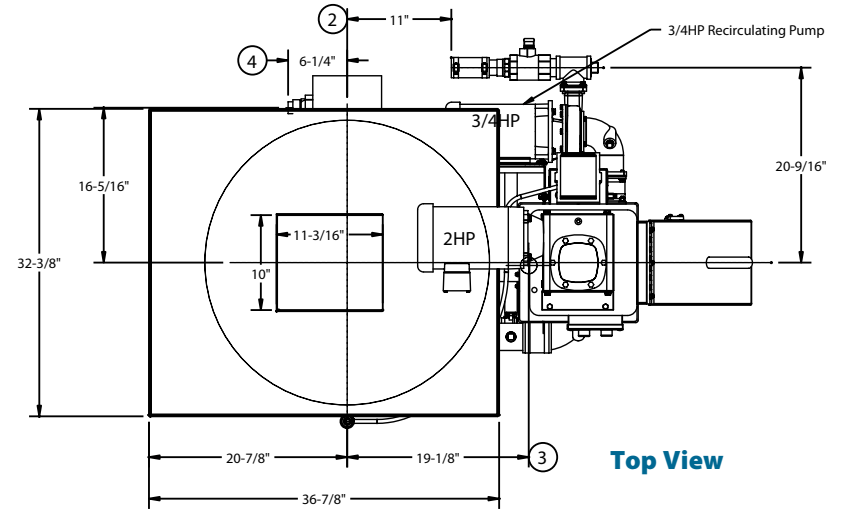
5 Hp - 30" Pulper
Waste Handling System

P5-30 with Optional Recirculating Pump Mounted on Rear of Water Extractor

Volume crated: **99 cu. ft.**
Shipping weight crated: **1000 lbs.**
Dimensions shown in inches



Front View



Top View

Utilities	
1	Electrical See Chart.
2	Optional Recirculation Pump
3	Drain 1-1/2" NPT.
4	Cold Water 1/2" NPT cold water connection.

Item	Qty.	Description
A	1	Slurry Chamber 30" dia.
B	1	Motor – Main Drive 5 Hp
C	1	Water Extractor Drive Motor 2 Hp
D	1	Water Extractor
E	1	Discharge Chute
F	1	Scrapping Tray
G	1	Start/Stop Station

SPECIFICATIONS

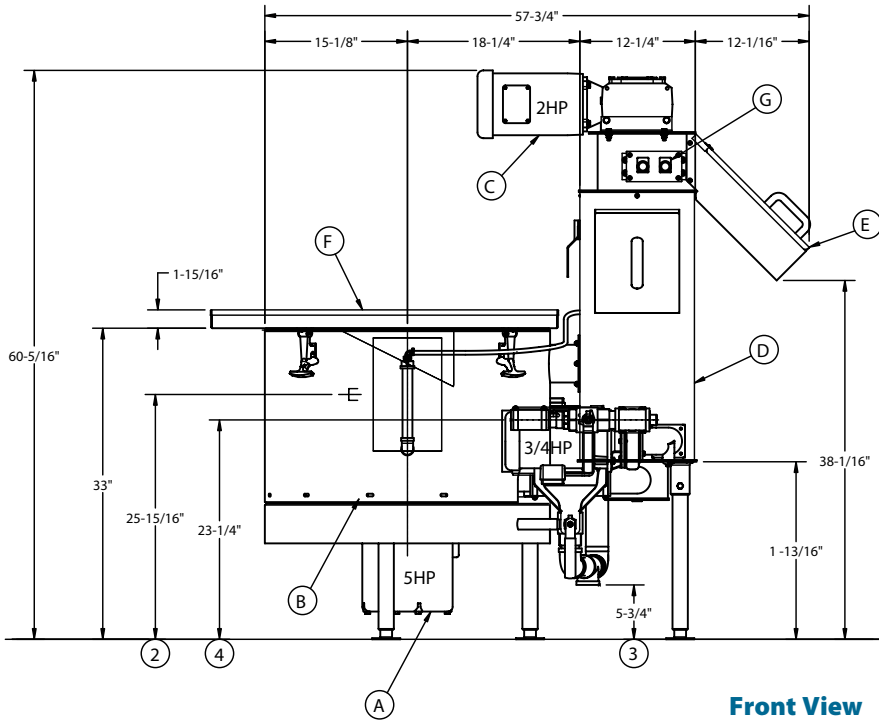
Capacities Input	
Waste (approx. lbs. per hr.)	1000
Motor horsepower	
Pulper	5
Water Extractor	2
Slurry Chamber	
Tank (in. dia.)	30
Cutting Disk (in. dia.)	12
Connections	
Fresh water (in.)	1/2
Drain (in.)	1-1/2

Champion[®]

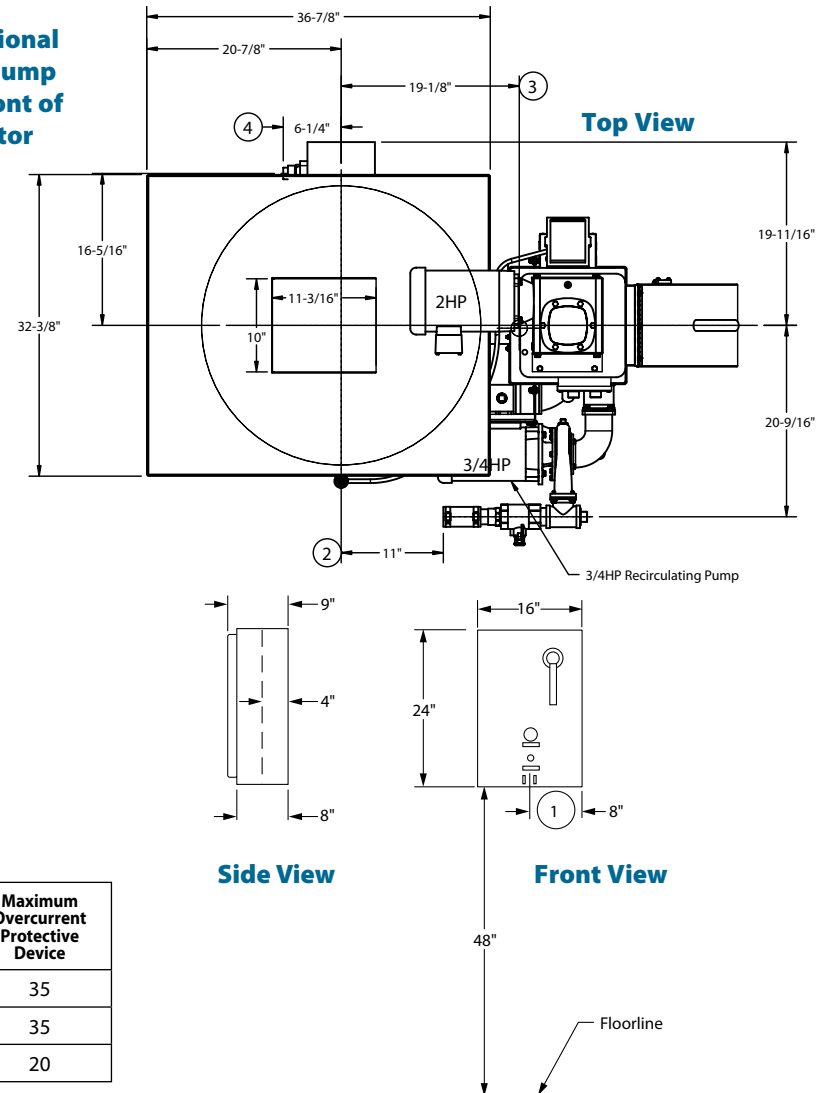
The Dishwashing Machine Specialists

P5-30 PULPER

5 Hp - 30" Pulper
Waste Handling System



P5-30 with Optional Recirculating Pump Mounted on Front of Water Extractor



P5-30 with 3/4 HP Recirculating Pump

Elec. Specs	Rated Amps	Minimum Supply Ckt. Conductor Ampacity	Maximum Overcurrent Protective Device
208/60/3	31	40	40
230/60/3	29	40	40
460/60/3	15	20	20

P5-30 w/o Recirculating Pump

Elec. Specs	Rated Amps	Minimum Supply Ckt. Conductor Ampacity	Maximum Overcurrent Protective Device
208/60/3	27	35	35
230/60/3	26	35	35
460/60/3	13	20	20

Due to an ongoing value analysis program at Champion, specifications contained in this catalog are subject to change without notice.

Champion Industries, Inc., 3765 Champion Blvd., Winston-Salem, NC 27105 • 336/661-1556 • Fax: 336/661-1979 • www.championindustries.com

P5-30

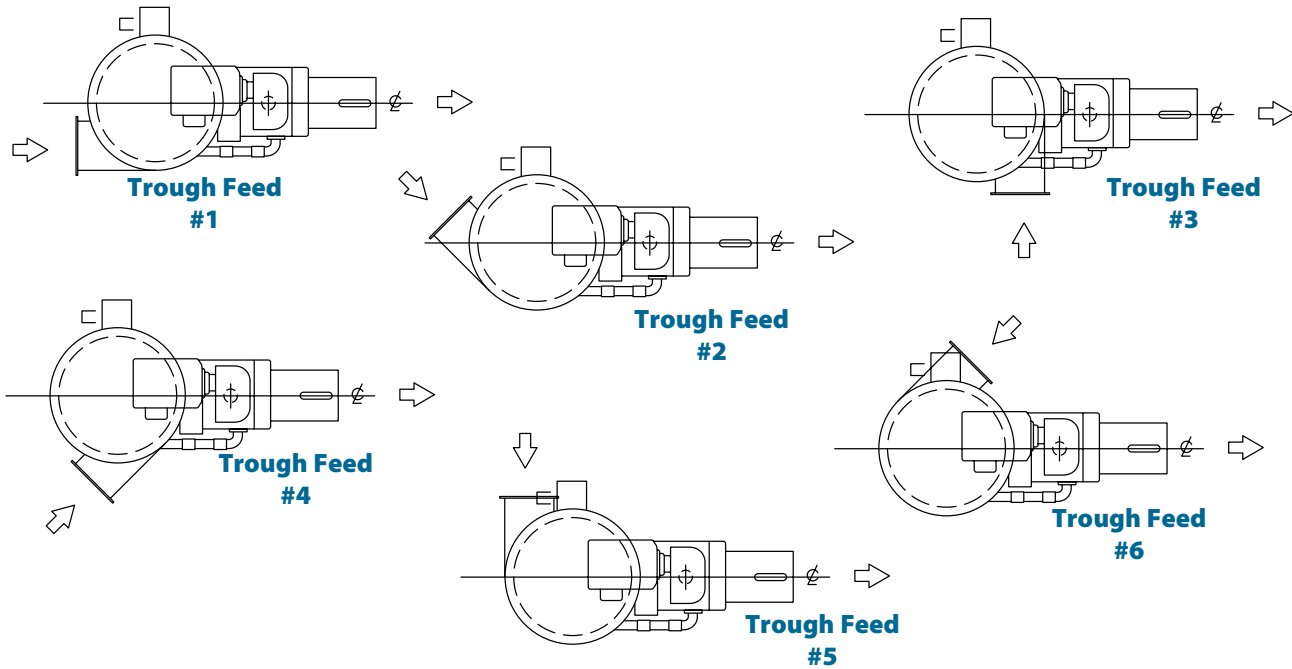
5 Hp - 30" Pulper
Waste Handling System

Champion®

The Dishwashing Machine Specialists

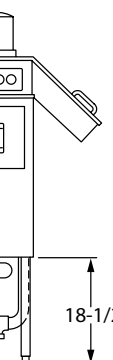
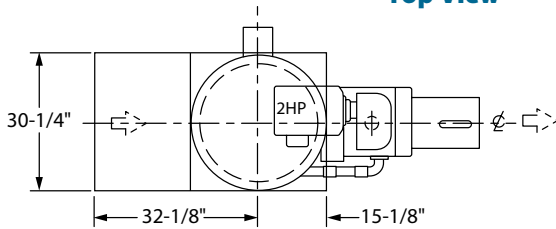
Sample Trough Configurations and Feed Methods

For additional trough configurations and feed methods, contact Factory



Feed Tray with Hood

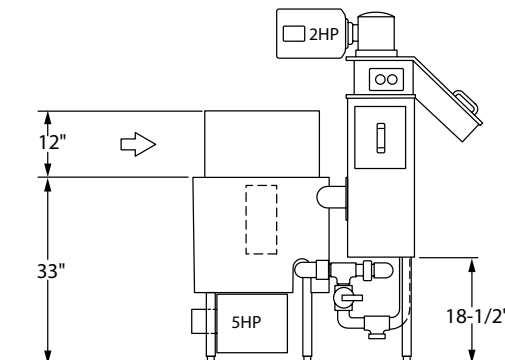
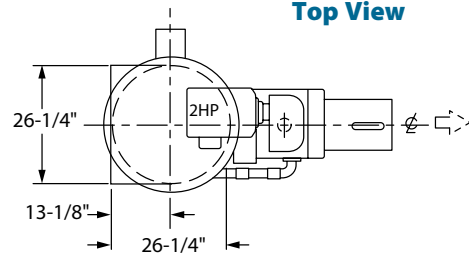
Top View



Front View

Under Table Feed Tray

Top View



Front View

'USGBC' and related logo is a trademark owned by the U.S. Green Building Council and is used by permission.

Due to an ongoing value analysis program at Champion, specifications contained in this catalog are subject to change without notice.

Champion Industries, Inc., 3765 Champion Blvd., Winston-Salem, NC 27105 • 336/661-1556 • Fax: 336/661-1979 • www.championindustries.com