

# Champion®

The Dishwashing Machine Specialists

Project \_\_\_\_\_  
Item No. \_\_\_\_\_  
Quantity \_\_\_\_\_

PP3 TASKMASTER

## STANDARD FEATURES

- **NEW** Factory authorized startup
- Type 304 polished stainless steel construction
- 14 gauge stainless tanks and drain boards
- 11" high x 2-1/2" deep back splash
- Twist handle drains
- Stainless steel legs and cross rails
- Stainless steel adjustable bullet feet
- Stainless steel pump and impeller
- Rear discharge
- Removable strainer plates
- One 3 Hp fully enclosed wash pump motor with permanently sealed bearings
- Motor overload protection, manual reset
- Low water protection for wash pump motor
- 3,000 watt wash tank heater
- 1 year parts and labor on pumps and control panel

**PP3**  
**Taskmaster**  
Powered Wash Sink System



*Photo is for general visual representation only. Please refer to specifications for the latest detailed product information.*



## SPECIFIER STATEMENT

Specified unit will be Champion model PP3 Taskmaster Powered Wash Sink System.

Features (1) 3 Hp wash pump motor, taskmaster control system, stainless steel pump and impeller.

## OPTIONS & ACCESSORIES

- 480/60/3 electrical
- Utensil basket
- Folding wash tank cover
- Sheet pan racking system
- Pot and pan overhead shelf with hooks
- Table mounted over shelf
- 1/2" pre-rinse sprayer
- 3/4" fill faucet
- Direction from soiled to clean end (select one)
  - Left to right
  - Right to left
- NEW** Champion ION scale prevention system

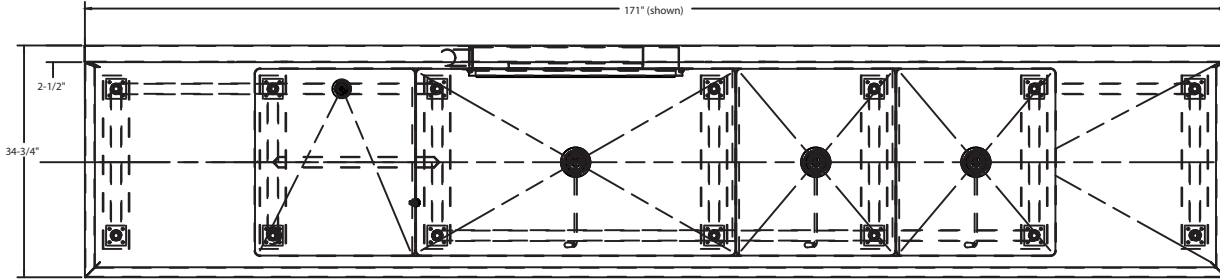
Champion Industries, Inc.  
3765 Champion Blvd, Winston-Salem, NC 27105  
Tel: 336/661-1556 Fax: 336/661-1979

2674 N. Service Road  
Jordan Station, Ontario, Canada L0R 1S0  
Tel: 905/562-4195 Fax: 905/562-4618

[www.championindustries.com](http://www.championindustries.com)

(Consult the factory for custom lengths and widths)

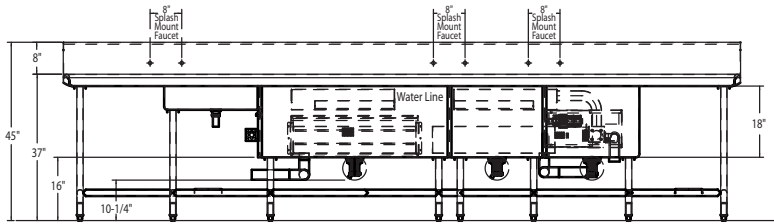
Dimensions shown in inches



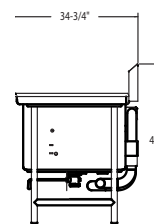
**Plan View**

Note: Either the soiled drain board or the scrap sink must be at least 24" to accommodate the mechanical components

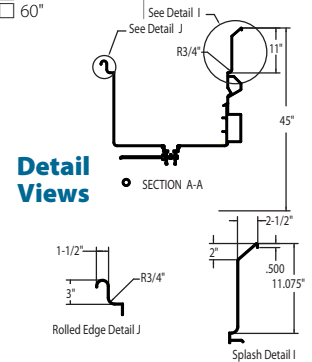
- A** **Edge Type**  
 1-1/2" Rolled  
 2-1/2" Splash
- B** **Drain Board**  
 By nominal inch  
 12"  
 18"  
 20"  
 24"  
 36"  
 42"  
 48"  
 54"  
 60"  
 w/Disposer Collar
- C** **Scrap Sink**  
 24"  
**Custom**  
 w/Scrap Basket
- D** **Wash Tank**  
 36"  
 42"  
 48"  
 60"
- E** **Options**  
 Utensil Basket  
 Sheet Pan Racking System
- F** **Rinse Sink**  
 Omit  
 20"  
 24"  
 36"
- G** **Sanitizer Sink**  
 Omit  
 20"  
 24"  
 36"
- H** **Drain Board**  
 Omit  
 12"  
 18"  
 20"  
 24"  
 36"  
 42"  
 48"  
 54"  
 60"
- I** **Edge Type**  
 1-1/2" Rolled  
 2-1/2" Splash



**Front View**



**Side View**



**Detail Views**

PP3			
Electrical Specifications	Rated Amps	Minimum Supply Circuit Ampacity	Maximum Overcurrent Protective Device
208/60/1	25	35	35
240/60/1	26	35	35
208/60/3	17	25	25
240/60/3	18	25	25
480/60/3	8	15	15

PP3 No Heat			
Electrical Specifications	Rated Amps	Minimum Supply Circuit Ampacity	Maximum Overcurrent Protective Device
208/60/1	11	20	20
240/60/1	10	20	20
208/60/3	8	15	15
240/60/3	8	15	15
480/60/3	4	10	10

**SPECIFICATIONS**

Motor 1 x 3 Hp  
 Power Requirements (see charts)  
 Direction of Operation R-L or L-R

**Note:** 3HP only available in 3 phase; 2 HP only available in 1 phase

**Warning:** Plumbing and electrical connection should be made by qualified personnel who will observe all the applicable plumbing, sanitation, and safety codes and the National Electrical Code.

Due to an ongoing value analysis program at Champion, specifications contained in this catalog are subject to change without notice.

Champion Industries, Inc.,  
 3765 Champion Blvd., NC 27105 • 336/661-1556 • Fax: 336/661-1979 •  
 2674 N. Service Road, Jordan Station, Ontario, Canada L0R 1S0 • 800/263-5798 • Fax: 905/562-4618  
 ChampionIndustries.com • ChampionIndustries.com/canada • sales@moyerdiebellimited.com

Utilities	
<b>1</b>	<b>Electrical</b> (see box)
<b>2</b>	<b>Hot Water</b> 3/4" NPT connection for mixing faucet. 1/2" NPT connection for pre-rinse sprayer.
<b>3</b>	<b>Cold Water</b> 3/4" NPT connection for mixing faucet. 1/2" NPT connection for pre-rinse sprayer.
<b>4</b>	<b>Drain</b> A. Sink drains, 2" NPT B. Scrapper drain, 1-1/2" NPT (25-5/8" AFF)