

Champion[®]

The Dishwashing Machine Specialists

Project _____
Item No. _____
Quantity _____

WASTE HANDLING SYSTEM

STANDARD FEATURES

- Low speed, high torque dual-shafted shredder
- Automatic anti-jam sequence
- Trough connection
- Stainless steel base and frame
- Compact and efficient design
- Computerized control with the Programmable Logic Controller (PLC)
- 5 HP grinding motor
- 3/4 HP transfer pump



Technology is patent pending.

SSG

Slow Speed Grinder



Photos are for general visual representation only. Please refer to specifications for the latest detailed product information.

OPTIONS & ACCESSORIES

- Gray water reuse:** Automated valve controls supplement trough fresh water supply with gray water from Champion warewashing and/or Bi-Line Table Conveyor System (additional installation requirements)

SPECIFIER STATEMENT

Specified unit will be Champion model SSG-R remote waste handling system.

The SSG features a 5 HP dual-shafted waste-grinder with two independent shafts consisting of individual cutters and spacers. The alloy steel cutters have hardness from 40-65, Rockwell C, and have 13 cam-shaped teeth. A maximum 1,250 lbs processing per hour of food service waste, including food scraps, paper, plastic, Styrofoam and cardboard.

1 year parts and labor warranty.



Champion Industries, Inc.
3765 Champion Blvd., Winston-Salem, NC 27105
Tel: 336/661-1556 Fax: 336/661-1979
www.championindustries.com

Champion®

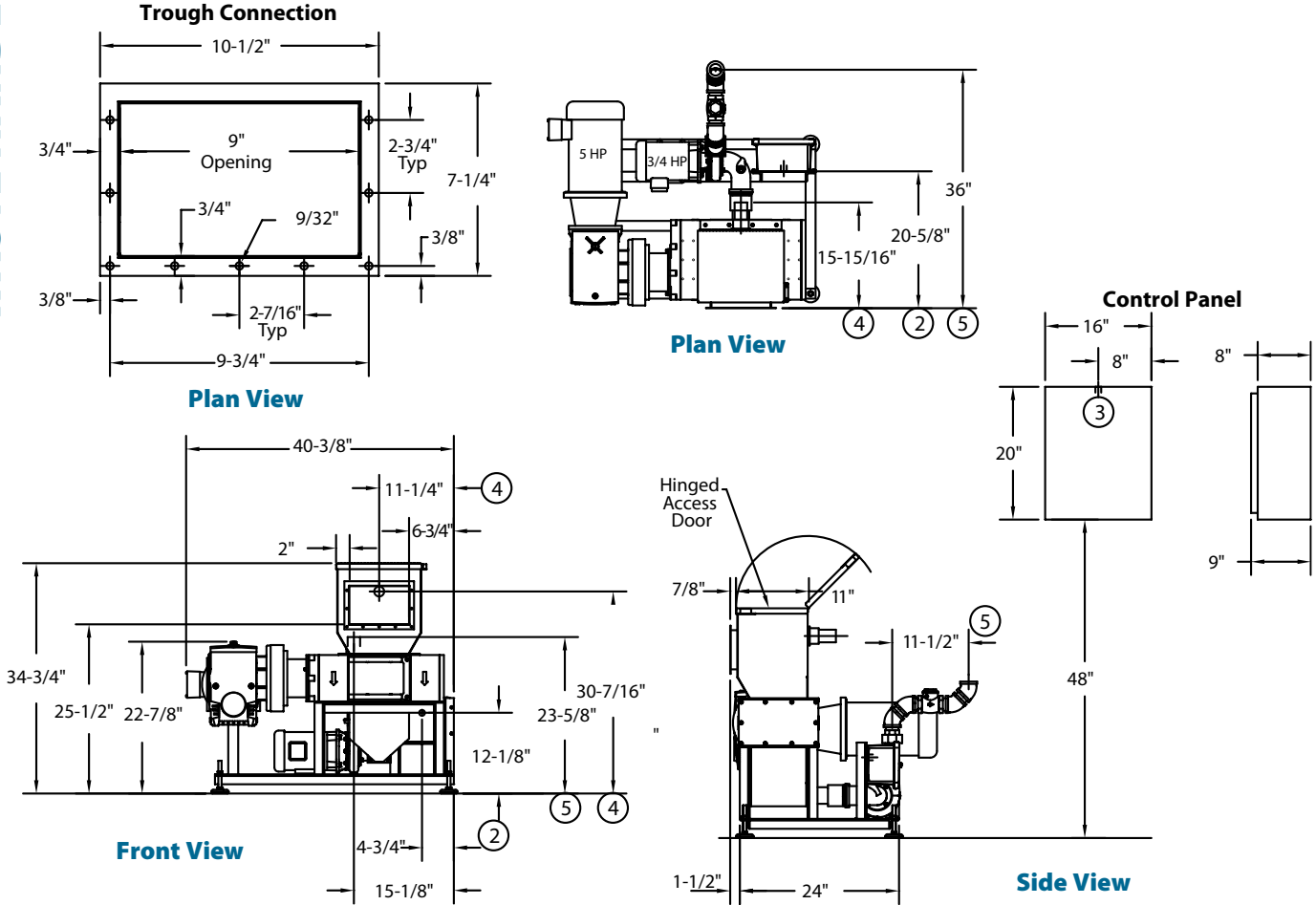
The Dishwashing Machine Specialists



Slow Speed Grinder

Weight: 550 lbs

Dimensions shown in inches



SPECIFICATIONS

Note: Configuration on pump location for SS Grinder and Slurry pump are able to be moved if desired.

MODEL	SSG
Capacity lbs	1250 lbs / hr foodwaste mix
Volume Reduction	9:1
UTILITIES & INSTALLATION	
Supply Voltage	208/3Φ/60 - 480/3Φ/60
Breaker Size Amps 220V (480V)	20A (15A)
Electrical Connections (Installation)	<ol style="list-style-type: none"> 208-480/3Φ/60 to Control Cabinet Control wires (control cabinet to unit mounted junction box) Communication cable (2 twisted shielded pair) to centrifuge cabinet
Controls	PLC Controls (automated with remote-mounted push button operation)
Power Rating (kW at full load)	5.7
Fresh Water	1/2" @ 20psi trough connection
Overflow	4. 1-1/2" Piped to drain
Discharge to Centrifuge	5. 1-1/2" NPT

Warning: Plumbing and electrical connections should be made by qualified personnel who will observe all the applicable plumbing, sanitary, and safety codes and the National Electrical Codes.

Due to an ongoing value analysis program at Champion, specifications contained in this catalog are subject to change without notice.

Champion Industries, Inc., 3765 Champion Blvd., NC 27105 • 336/661-1556 • Fax: 336/661-1979 • www.championindustries.com

STANDARD FEATURES

- Stainless steel base and frame
- Compact and efficient design
- Computerized control with the Programmable Logic Controller (PLC)
- 1.5 HP centrifugal waste dewaterer
- Remote extractor stand to accommodate dehydrator or trash receptacle
- Self-cleaning rinse down cycle



Photos are for general visual representation only. Please refer to specifications for the latest detailed product information.

OPTIONS & ACCESSORIES

- Gray water reuse:** Automated valve controls supplement trough fresh water supply with gray water from Champion warewashing and/or Bi-Line Table Conveyor System (additional installation requirements)

SPECIFIER STATEMENT

Specified unit will be Champion model SSG-R remote waste handling system.

A maximum 1,250 lbs processing per hour of food service waste, including food scraps, paper, plastic, Styrofoam and cardboard. 1.5 HP centrifugal-type remote extractor with self-cleaning automatic wash down cycle.

1 year parts and labor warranty.

Champion[®]

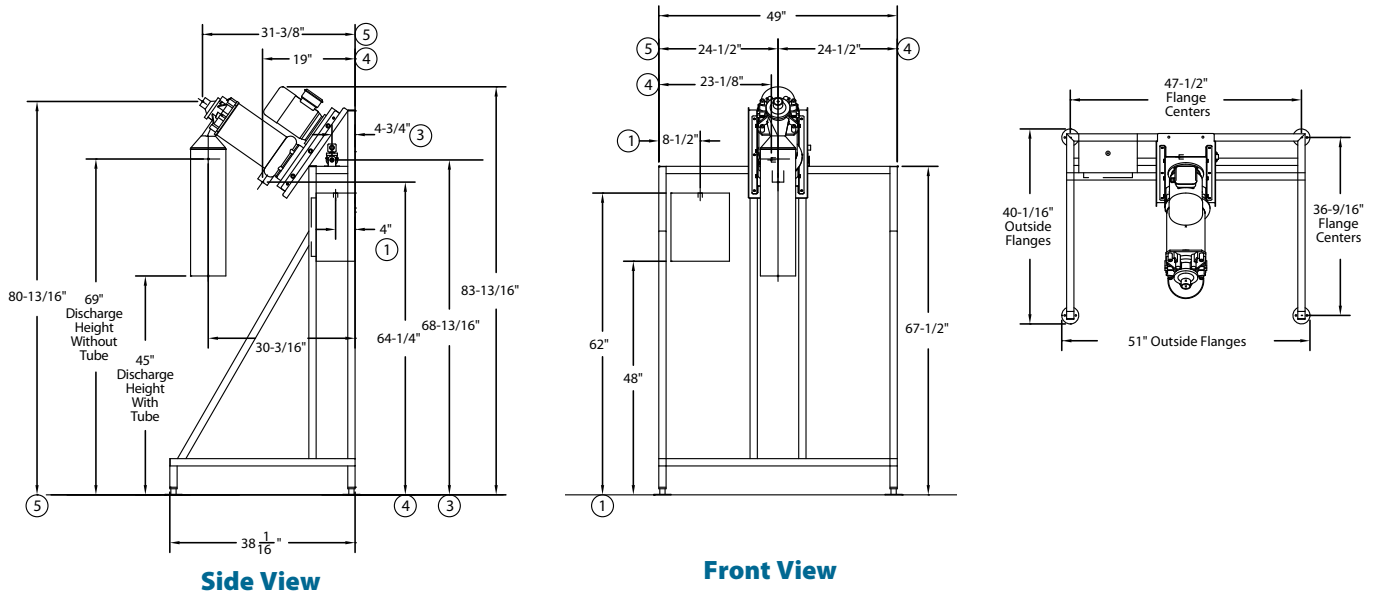
The Dishwashing Machine Specialists

Centrifuge

Remote Waste Extractor

Weight: 185 lbs

Dimensions shown in inches



Note: Stand can be adjusted for waste receptacle or Phoenix Dehydrator.

SPECIFICATIONS

MODEL	Centrifuge Waste Dewaterer
Capacity lbs	1250 lbs / hr shredded foodwaste mix from SSG
Volume Reduction	up to 60%
UTILITIES & INSTALLATION	
Supply Voltage	208/3Ø/60 - 480/3Ø/60
Breaker Size Amps 220V (480V)	15 (15A)
Electrical Connections (Installation)	<ol style="list-style-type: none"> 208-480/3Ø/60 to Control Cabinet Communication cable from SSG cabinet
Controls	PLC Controls (automated operation with SSG)
Power Rating (kW at full load)	1.5
Fresh Water	<ol style="list-style-type: none"> 1/2" @ 20psi
Drain	<ol style="list-style-type: none"> 2" MNPT to 3" Floor Sink
Intake from SSG	<ol style="list-style-type: none"> 1-1/2" IPS

Warning: Plumbing and electrical connections should be made by qualified personnel who will observe all the applicable plumbing, sanitary, and safety codes and the National Electrical Codes.

Due to an ongoing value analysis program at Champion, specifications contained in this catalog are subject to change without notice.

Champion Industries, Inc., 3765 Champion Blvd., NC 27105 • 336/661-1556 • Fax: 336/661-1979 • www.championindustries.com

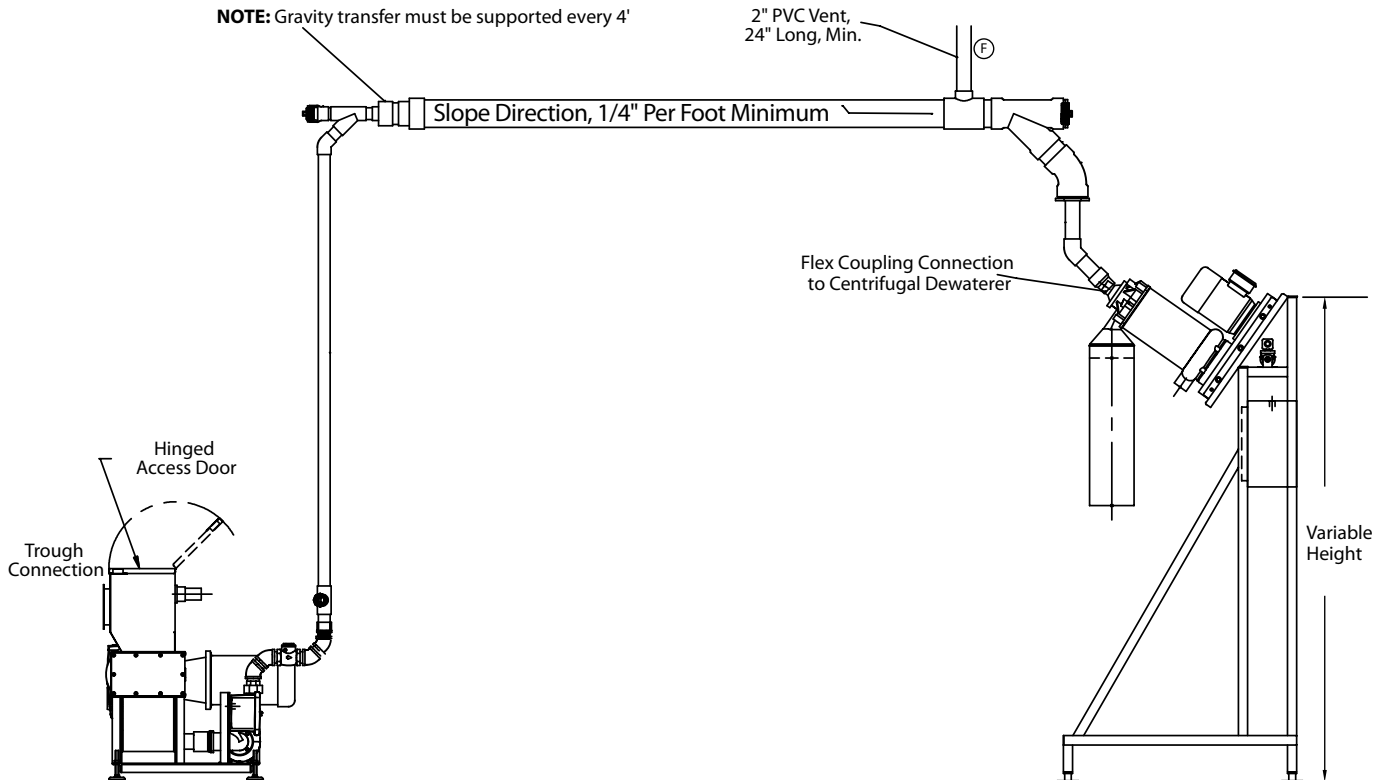
Champion[®]

The Dishwashing Machine Specialists

SSG-R

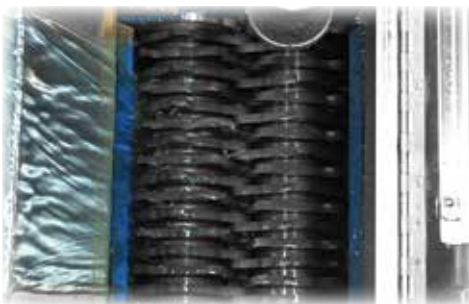
Remote Waste Handling System

WASTE HANDLING SYSTEM



Note: Please contact Factory for further consultation on remote system. Detailed plumbing drawings provided per project.

Note: All interplumbing between SSG and Centrifuge by others.



Slow Speed Grinder



High Speed Centrifuge



Phoenix Dehydrator

Warning: Plumbing and electrical connections should be made by qualified personnel who will observe all the applicable plumbing, sanitary, and safety codes and the National Electrical Codes.

Due to an ongoing value analysis program at Champion, specifications contained in this catalog are subject to change without notice.

Champion Industries, Inc., 3765 Champion Blvd., NC 27105 • 336/661-1556 • Fax: 336/661-1979 • www.championindustries.com



Champion[®]

FOODWASTE REDUCTION SYSTEM



SLOW SPEED GRINDER
INSIDE SHREDDER



SHREDDER W/ PIPE
TO CENTRIFUGE



DEHYDRATOR

WHAT THE SYSTEM OFFERS:

- » Over 1,250 lbs. of waste processing per hour
- » An 80% moisture removal of processed food waste
- » A 70% noise reduction from traditional pulping systems
- » A 60% reduction in power consumption from traditional pulping systems
- » A 60% reduction in installation cost from a traditional remote pulping system
- » Grind virtually anything introduced into the kitchen, from bones to Styrofoam
- » A 50% reduction in water usage from a traditional pulping system
- » Gray water re-use from the dish machine, and conveyor system, further reducing the need for fresh water, by up to 80%