



Simply Engineered Better

MODEL 401HT *PLUS*

Undercounter High Temperature
Dishwashing Machine
with Built-in Booster Heater



Shown with standard top and side panels

SPECIFIER STATEMENT

Specified unit will be a Moyer Diebel 401HT Plus undercounter high temp dishwasher or equivalent, complete with digital temperature displays, 2 kW tank heater, soft start feature, all stainless steel frame and fill and drain operation. Machine is to have a minimum door opening of 15-3/4" to accommodate trays, as well as a rinse sentry feature to ensure 180°F final rinse temperature. If required, unit to be provided in three phase electrical supply.

Project _____
Item No. _____
Quantity _____

STANDARD FEATURES

- Precise, dual, digital, temperature display for wash and rinse
- 2 kW tank heater for accurate wash water temperature control
- Standard top and side panels
- Fill and drain type operating principle means **"fresh water wash"**—rinse water is always re-used as next cycle's wash water.
- 40 Amp breaker only for 40° rise in 208/60/1
- **50 Amp breaker only for 70° rise in 208/60/1**
- Soft start provides gradual and quiet pump activation and helps prevent dish and glass breakage
- All stainless steel frame
- Upper and lower interchangeable spray arms
- Liquid detergent and rinse-aid dispensing pumps complete with prime switches
- Flexible fill and drain lines, flow regulator/line strainer and standard pumped drain for total ease of installation
- Quick 141 second cycle time. 25 racks per hour capacity
- Rinse sentry feature. Ensures proper 180° F final rinse temperature
- Complete with two 20" x 20" [508mm x 508mm] racks (one peg and one flat)
- One year parts and labour warranty
- Optional three phase model

OPTIONS & ACCESSORIES

- | | |
|---|-------------|
| <input type="checkbox"/> 70°F/39°C rise booster for 110°F/43°C incoming water | P/N 0712732 |
| <input type="checkbox"/> 17RS - 17" [432mm] rack storage stand | P/N 0708757 |
| <input type="checkbox"/> 6T - 6" stand | P/N 0712393 |
| <input type="checkbox"/> 1" roller kit | |

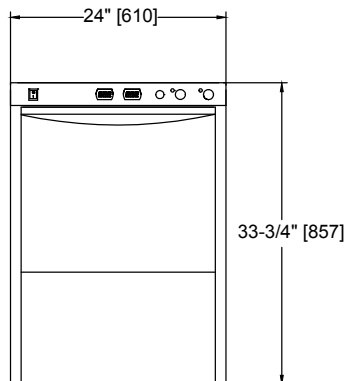
401HT PLUS UNDERCOUNTER



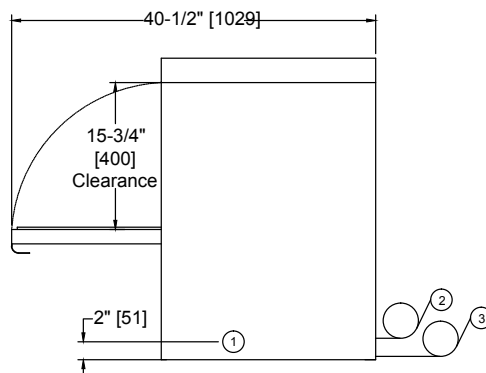
Moyer Diebel Ltd. – Canada

2674 North Service Rd., Jordan Station, Ontario, Canada L0R 1S0 Tel: 800/263-5798 Fax: 905/562-4618
sales@moyerdiebellimited.com

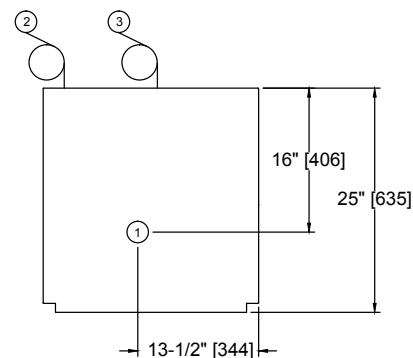
Dimensions shown in inches and [millimeters]



Front View



Side View



Plan View

SPECIFICATIONS

Capacity

*Racks per hr. 25

Motor Horsepower

Wash 1

Water Consumption

Imp. gal./liters per hr. (max. use) 31.9/145

Imp. gal./liters per rack 1.5/6.8

Temperatures °F/C

Wash (minimum) 150/66

Rinse (minimum) 180/82

Heating

Tank heat, electric (kW) 2

Electric booster

(kW required for 40°F/22°C rise) 6

(kW required for 70°F/39°C rise) 9

Time Cycle in Seconds

Wash 90

Rinse 26

Drain/fill 25

Total 141

Utilities

1 Electrical Connection

115/208-240/60/1; 3 wire plus ground. Hard wiring required (see box)

115/208-240/60/3; 4 wire plus ground.

2 Water Connection

140°F/60°C Min., hot water for 40°F/22°C rise booster.

110°F/43°C Min., hot water for 70°F/39°C rise booster.

5 ft. long 1/2" I.D. flexible fill hose with 3/4" garden hose connection provided.

Flow pressure: 25-95 psi (173-656 kPa)

3 Drain Connection

5 ft. long, 5/8" I.D. flexible drain hose provided. For Y connection into 1-1/2" drain.

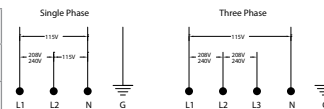
Max. drain flow: 7 gpm.; 32 imp, maximum 3' height above floor

1 Phase 40°F/22°C Rise Booster	Rated Amps	Minimum Supply Ckt. Conductor Ampacity	Maximum Overcurrent Protective Device
115/208/60/1	32	40	40
115/240/60/1	36	40	40
1 Phase 70°F/39°C Rise Booster	Rated Amps	Minimum Supply Ckt. Conductor Ampacity	Maximum Overcurrent Protective Device
115/208/60/1	43	50	50
115/240/60/1	50	60	60

3 Phase 40°F/22°C Rise Booster	Rated Amps	Minimum Supply Ckt. Conductor Ampacity	Maximum Overcurrent Protective Device
115/208/60/3	22	30	30
115/240/60/3	24	30	30
3 Phase 70°F/39°C Rise Booster	Rated Amps	Minimum Supply Ckt. Conductor Ampacity	Maximum Overcurrent Protective Device
115/208/60/3	29	35	35
115/240/60/3	33	40	40

	Width	Width
Height*	33-3/4" [860]	39-1/2" [1003]
Width	24" [610]	25" [635]
Depth	24" [610]	25-1/2" [647]
Ship Wt. lbs/kg	178/79	198/90

* Front leveling feet provided.



***Note:** Electrical supply service must be a 3 or 4 wire plus ground for connection as shown.

* Excludes 30 second NSF load/unload time.

Warning: Plumbing and electrical connections should be made by qualified personnel who will observe all the applicable plumbing, sanitary and safety codes.

Due to an ongoing value analysis program at Moyer Diebel, specifications in this catalog are subject to change without notice.

Moyer Diebel – Canada

2674 N. Service Rd, Jordan Station, Ontario, Canada L0R 1S0

800/263-5798 • Fax: 905/562-5422

ChampionIndustries.com/canada • sales@moyerdiebellimited.com

(1M) 5/17

an Ali Group Company



The Spirit of Excellence