

# Champion®

The Dishwashing Machine Specialists

Project \_\_\_\_\_  
Item No. \_\_\_\_\_  
Quantity \_\_\_\_\_

D-LF DOOR-TYPE

## STANDARD FEATURES

- Automatic tank fill
- Electric tank heat
- Balanced door lift system
- Corner model available (contact factory)
- Automatic electric drain valve
- Low-water tank heat protection
- 1 Hp drip-proof pump motor
- Door safety switches
- Top-mounted, splash-proof control console
- Interchangeable upper and lower spray arms
- Stainless steel pump impeller
- Stainless steel front and side panels
- Detergent/chemical connection provisions
- Single point electrical connection (see chart)
- Vent fan control

## D-LF

Door-type  
Low Temperature  
Dishwashing Machine



## OPTIONS & ACCESSORIES

- Steam coil tank operation
- Corner operation

## SPECIFIER STATEMENT

Specified unit will be Champion model D-LF low temperature dishwashing machine.

Features top mounted control cabinet, balanced door lift with safety latch, interchangeable stainless steel wash and rinse arms, 55 racks/hr., 1.1 US gals/rack. Constructed of type 304 SST.

1 year parts and labor warranty.

Champion Industries, Inc.  
3765 Champion Blvd., Winston-Salem, NC 27105  
Tel: 336/661-1556 Fax: 336/661-1979

2674 N. Service Road  
Jordan Station, Ontario, Canada L0R 1S0  
Tel: 800/263-5798 Fax: 905/562-4618

[www.championindustries.com](http://www.championindustries.com)

# D-LF

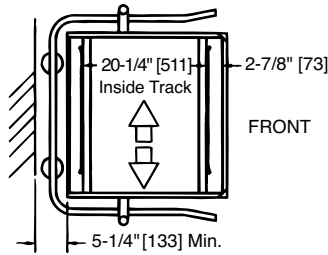
Door-type  
Low Temperature  
Dishwashing Machine

# Champion®

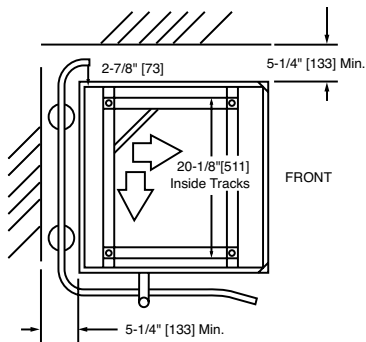
The Dishwashing Machine Specialists

Dimensions shown in inches and [millimeters]

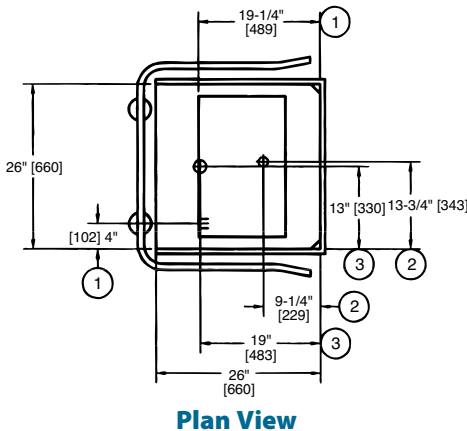
Length between table connections: **26"/660 mm**  
Volume crated: **51 cu. ft./1.45 cu.m.**  
Shipping weight crated: **325 lbs./148 kg**



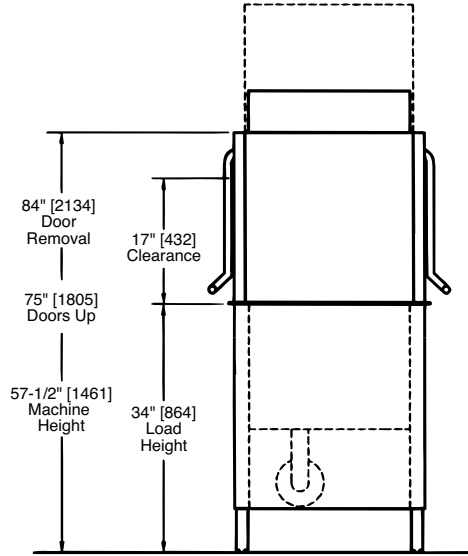
**Straight-through Configuration**



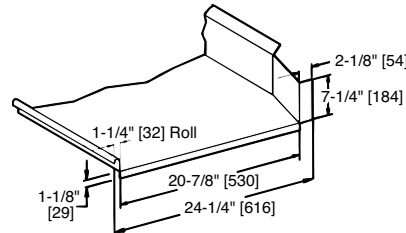
**Corner Configuration**



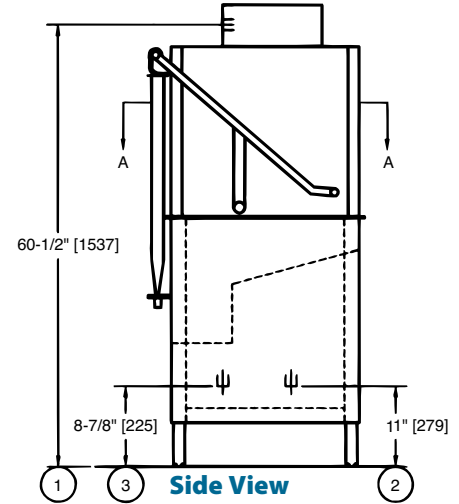
**Plan View**



**Front View**



**Typical Table Construction**



**Side View**

## SPECIFICATIONS

### Capacities

Racks per hr. (NSF rated) 55  
Wash tank US gal. (imp. gal./liters) 9 (7.5/34)

### Wash motor horsepower

1

### Water consumption

Gal. per hr. (max. use) US gal. (imp. gal./liters) 66 (55/248)

Gal. per rack US gal. (imp. gal./liters) 1.2 (0.96/4.4)

### Temperatures °F/°C

Wash 140/60  
Rinse 140/60

### Heating

Tank heat, electric (kW) 4.7

### Time cycle in seconds

Wash 45  
Dwell 1  
Rinse 14  
Total cycle 60

## Utilities

<b>1</b>	<b>Electrical:</b> (See Box)
<b>2</b>	<b>Hot water:</b> 3/4" NPT 140°F/60°C hot water connection. Flow pressure 20-22 psi. (138-151 kPa).
<b>3</b>	<b>Drain:</b> 2" O.D. connection. Max. flow 15 US gpm (12 imp. gpm/54 lpm.) 3/4" NPT machine return to boiler <b>A.</b> Steam Injector Condensate <b>B.</b> Steam Coil Condensate

**Caution:** Silver, aluminum and pewter are attacked by sodium hypochlorite (liquid bleach). Champion low temperature dishwashing machines are designed for liquid bleach solutions not exceeding 50 ppm.

For Electric Heat			
Elec. Specs.	Rated Amps	Minimum Supply Ckt. Conductor Ampacity	Maximum Overcurrent Protective Device
115/60/1 *	48	60	60
208/60/1	37	45	45
240/60/1	40	45	45
208/60/3	20	25	25
240/60/3	22	25	25
480/60/3	9	15	15
575/60/3	37	15	15

\* 3kW wash tank heater

For Steam Heat			
Elec. Specs.	Rated Amps	Minimum Supply Ckt. Conductor Ampacity	Maximum Overcurrent Protective Device
115/60/1	22	30	30
208/60/1	12	15	15
240/60/1	11	15	15
208/60/3	6	15	15
240/60/3	6	15	15
480/60/3	3	15	15
575/60/3	3	15	15

**Warning:** Plumbing and electrical connection should be made by qualified personnel who will observe all the applicable plumbing, sanitary and safety codes and the National Electrical Code.

**Plumbing Note:** Because of the variation in house-supplied water and steam pressure, pressure regulating valves (PRV's) for incoming water and steam supply are needed. The PRV's can be purchased from Champion or obtained locally.

**Note:** Water Hammer Arrestor (meeting ASSE-1010 standard or equivalent) to be supplied (by others) in common water supply line at service connection.

Due to an ongoing value analysis program at Champion, specifications contained in this catalog are subject to change without notice.

Champion Industries, Inc., 3765 Champion Blvd., Winston-Salem, NC 27105 • 336/661-1556 • Fax: 336/661-1979 • www.championindustries.com  
2674 N. Service Road • Jordan Station, Ontario, Canada L0R 1L0 • 800/263-5798 • Fax: 905/562-4618