

Champion[®]

The Dishwashing Machine Specialists

PROJECT: _____

ITEM # _____ QTY: _____

MODEL # _____

AIA # _____ SIS # _____

CG4 / CG6

GLASSWASHERS PASS THROUGH SERIES



Rendered image is for general visual representation only. Please refer to specifications for the latest detailed product information.

OPTIONS & ACCESSORIES

- CG47 Drain Tray and Waste Collector
- CG12 SST Splash Guards (CG4)
- CG24 SST Splash Guards (CG6)
- CG48 SST Back Panel (CG4)
- CG72 SST Back Panel (CG6)
- Kit 264 Washdown Hose
- Kit 332 Casters, set of 4, 2 locking, 2 regular

STANDARD FEATURES

- **Three Built-In Chemical Dispensing Pumps**
- **Electric Tank Heater**
- **Built-In Controls**
- **Upper And Lower Wash And Rinse Spray System**
- **Stainless Steel Wash And Rinse Chamber**
- **Polypropylene Conveyor**
- **Right-To-Left Or Left-To-Right Operation**
- **Two Splash Curtains**



GLASSWASHERS PASS THROUGH SERIES

SPECIFIER STATEMENT

Specified unit will be Champion model CG4 or CG6 pass-through conveyor type glasswasher. Features include detergent, sanitizer and rinse aid pump, upper & lower wash/rinse arms, cold water final rinse polypropylene conveyor, two splash curtains, processes 2,000 glasses/hr.

1 year parts, 90 day labor warranty.

In the USA:
3765 Champion Blvd, Winston-Salem, NC 27105
Tel: (336) 661-1556 Fax: (336) 661-1979
www.championindustries.com

SPECIFICATIONS

Capacities (hr)	
2-1/2" glasses/hr.	2000
Water Consumption	
Cold Water (approx.)	2.6 gpm
Hot Water (initial fill)	3 Gal
(Max. use – approx. 10 gph)	
Temperature °F	
Inlet water (hot) min/max	145-160
Inlet water (cold)	75
Heating	
Tank heat, electric, (kW)	3
Clearance	
Through machine (inches)	10-1/4"
Conveyor Speed	
Inches per minute	14

	Uncrated		Crated	
	CG4	CG6	CG4	CG6
Height*	38-1/2"	38-1/2"	49"	49"
Width	48"	72"	63"	76-1/2"
Depth	22"	22"	27-1/2"	27-1/2"
Ship Wt. LBS.	225	285	255	325

*Adjustable foot height 1-3/4"

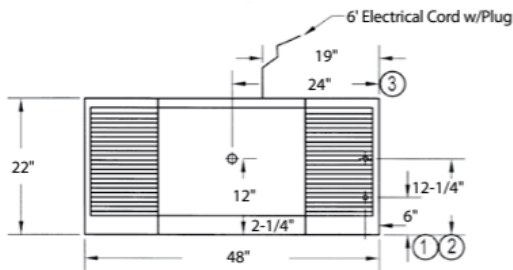
Utilities

	Electrical 208-230/60/1, 15 AMP
1	Hot Water 1/2" IPS. Flow pressure 25-95 psi
2	Cold Water 1/2" IPS. Flow pressure 25-95 psi
3	Drain 1-1/2" tailpiece. Connect to drain size according to local plumbing code.

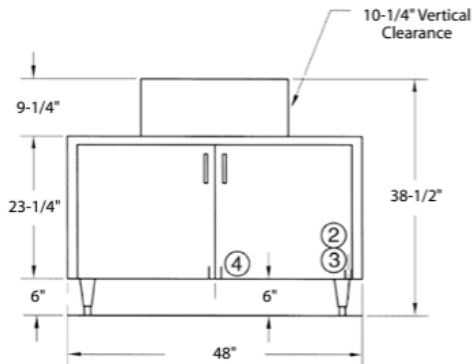
Warning: Plumbing, electrical connections should be made by qualified personnel who will observe all the applicable plumbing, sanitary and safety codes and the National Electrical Code.

Note: CG4/CG6 models supplied with 4 ft. plug-in cord (NEMA 6-15P).

CG4

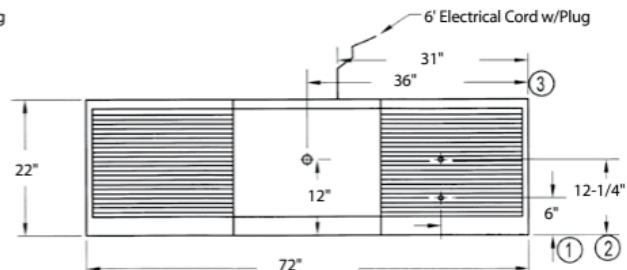


Plan View

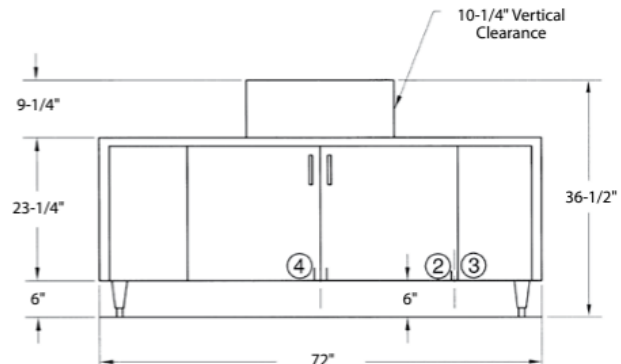


Front View

CG6



Plan View



Front View

Note: Both Doors 21-1/2" High 22" Wide