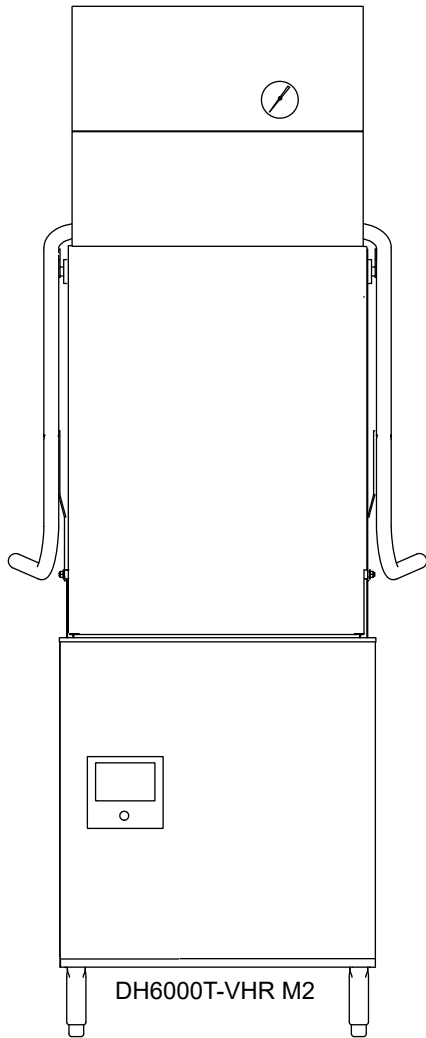


Champion®

Service Replacement Parts



M2 SERIES

Models:

DH6000-VHR
DH6000T-VHR

Hot water sanitizing machine w/fresh water rinse and built-in stainless steel electric booster/Ventless Heat Recovery

DH6000-STANDARD
DH6000T-STANDARD

Hot water sanitizing machine w/fresh water rinse and built-in stainless steel electric booster



Issue Date: 1.3.24

Manual P/N 117472 rev. F

For machines beginning with S/N D220421234 and above

NATIONAL SERVICE DEPARTMENT

USA

Toll-free: 1 (800) 858-4477
Tel: (336) 661-1556
Fax: (336) 661-1660
Email: service@championindustries.com

Canada

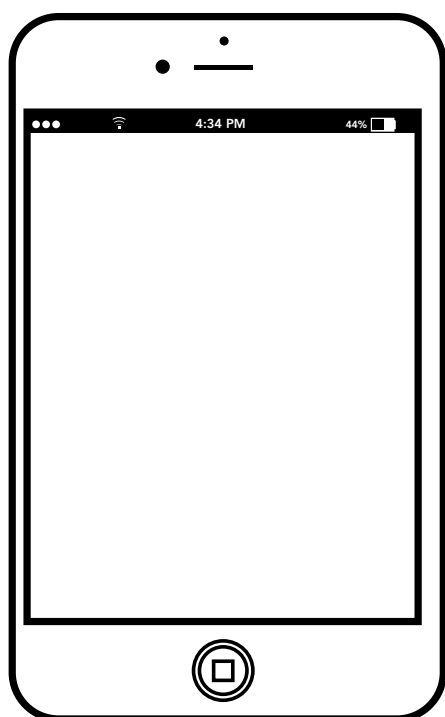
Toll-free: 1 (800) 263-5798
Tel: (905) 562-4195
Fax: (905) 562-4618
Email: service@moyerdiebellimited.com

ATTENTION

The machine data plate
is located at the lower
right corner of the front panel.



Three ways to REGISTER YOUR PRODUCT and ACTIVATE YOUR WARRANTY.



- Use your mobile device and connect to the website www.championindustries.com to register your product.

or

- Scan the QR code <http://champDW.DHM2> located on the lower front panel of the machine.

or

- Complete the fax form on the next page and fax to 1 (800) 661-1660.

PRODUCT REGISTRATION BY FAX

COMPLETE THIS FORM AND FAX TO:

(336) 661-1660 in the USA

1-(800) 204-0109 in Canada

PRODUCT REGISTRATION CARD

Model

Serial #

Date of Installation: ___/___/___

Company Name: _____

Address: _____
(Street) State/Province Zip/Postal Code

Telephone #: () _____ --- _____

Contact: _____

Installation Company: _____

Address: _____

Telephone #: _____

Contact: _____

FAILURE TO REGISTER YOUR PRODUCT MAY VOID YOUR WARRANTY

IMPORTANT IMPORTANT

Revision History

Due to an ongoing value analysis program at Championindustries, specifications contained in the manual are subject to change without notice.

Revision Date	Revised Pages	Serial Number Effectivity	Revision Description
8.23.22	All	D220421234	Released first edition
12.14.22	38-39	D220421234	Added Item 8, inline sensor, P/N 117011
4.4.23	40-41	D230322622	Revised tank probe fittings
6.6.23	27	All	Added Item 23a, P/N 336125-S, service hood
	29	All	Added Item 25a, P/N 338433-S, service hood
	37	D230322622	Added Item 31a, Label P/N 117663
	41	D230322622	Changed Item 17, Drain Valve to P/N 117659
	42	D230623061	Added Optional Electric DWT assembly
7.5.23	42	D230623061	Added Optional Electric DWT assembly
7.13.23	22-23	D230623034	Added Wientek HMI beginning with S/N230623034
12.4.23	41	D230923373	Replaced Item 18, Overflow Hose, P/N 114472 with Overflow Hose, P/N 117298.
1.3.24	18-19	All	Added Item 4, P/N 117752, Anti-kink spring

Limited Warranty

LIMITED WARRANTY

Champion Industries (herein referred to as 'The Company'), 3765 Champion Blvd., Winston-Salem, North Carolina 27105, and 2674 N. Service Road, Jordan Station, Ontario, Canada, L0R 1S0, warrants machines, and parts, as set out below.

Warranty of Machines: The Company warrants all new machines of its manufacture bearing the name 'Champion' and installed within the United States and Canada to be free from defects in material and workmanship for a period of one (1) year after the date of installation or fifteen (15) months after the date of shipment by The Company, whichever occurs first. [See below for special provisions relating to glasswashers.] Warranty registration must be submitted to The Company within ten (10) days after installation either online on the Champion Industries website (<http://www.championindustries.com>) or by the fax form provided at the front of this manual. The Company will not assume any responsibility for extra costs for installation in any area where there are jurisdictional problems with local trades or unions.

If a defect in workmanship or material is found to exist within the warranty period, The Company, at its election, will either repair or replace the defective part or accept return of the machine for full credit; provided; however, as to glasswashers, The Company's obligation with respect to labor associated with any repairs shall end (a) 120 days after shipment, or (b) 90 days after installation, whichever occurs first. In the event that The Company elects to repair, the labor and work to be performed in connection with the warranty shall be done during regular working hours by a Champion authorized service technician. Defective parts become the property of The Company. Use of replacement parts not authorized by The Company will relieve The Company of all further liability in connection with its warranty. In no event will The Company's warranty obligation exceed The Company's charge for the machine. The following are not covered by The Company's warranty:

- a. Lighting of gas pilots or burners.
- b. Cleaning of gas lines.
- c. Replacement of fuses or resetting of overload breakers.
- d. Adjustment of thermostats.
- e. Adjustment of clutches.
- f. Opening or closing of utility supply valves or switching of electrical supply current.
- g. Cleaning of valves, strainers, screens, nozzles, or spray pipes.
- h. Performance of regular maintenance and cleaning as outlined in the operator's guide.
- i. Damages resulting from water conditions, accidents, alterations, improper use, abuse, tampering, improper installation, or failure to follow maintenance and operation procedures.
- j. Wear on Pulper cutter blocks, pulse vanes, and auger brush.

Examples of the defects not covered by warranty include, but are not limited to: (1) Damage to the exterior or interior finish as a result of the above, (2) Use with utility service other than that designated on the rating plate, (3) Improper connection to utility service, (4) Inadequate or excessive water pressure, (5) Corrosion from chemicals dispensed in excess of recommended concentrations, (6) Failure of electrical components due to connection of chemical dispensing equipment installed by others, (7) Leaks or damage resulting from such leaks caused by the installer, including those at machine table connections or by connection of chemical dispensing equipment installed by others, (8) Failure to comply with local building codes, (9) Damage caused by labor dispute.

Warranty of Parts: The Company warrants all new machine parts produced or authorized by The Company to be free from defects in material and workmanship for a period of 90 days from date of invoice. If any defect in material and workmanship is found to exist within the warranty period The Company will replace the defective part without charge.

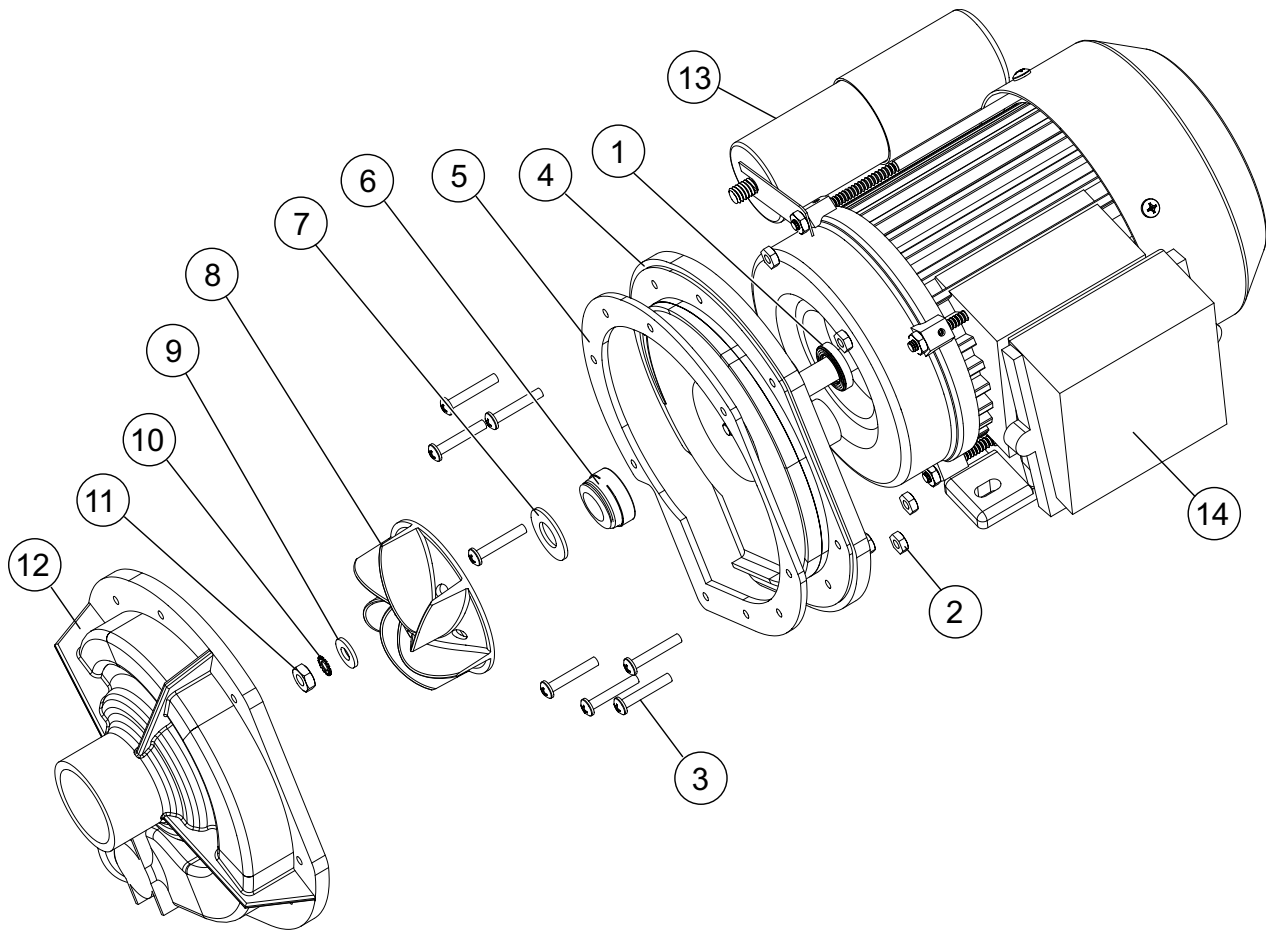
DISCLAIMER OF WARRANTIES AND LIMITATIONS OF LIABILITY. THE COMPANY'S WARRANTY IS ONLY TO THE EXTENT REFLECTED ABOVE. THE COMPANY MAKES NO OTHER WARRANTIES, EXPRESS OR IMPLIED, INCLUDING, BUT NOT LIMITED, TO ANY WARRANTY OF MERCHANTABILITY, OR FITNESS OF PURPOSE. THE COMPANY SHALL NOT BE LIABLE FOR INCIDENTAL OR CONSEQUENTIAL DAMAGES. THE REMEDIES SET OUT ABOVE ARE THE EXCLUSIVE REMEDIES FOR ANY DEFECTS FOUND TO EXIST IN THE COMPANY'S' DISHWASHING MACHINES AND THE COMPANY'S PARTS, AND ALL OTHER REMEDIES ARE EXCLUDED, INCLUDING ANY LIABILITY FOR INCIDENTALS OR CONSEQUENTIAL DAMAGES.

The Company does not authorize any other person, including persons who deal in Champion dishwashing machines to change this warranty or create any other obligation in connection with Champion dishwashing machines.

Service Replacement Parts

ILLUSTRATION	PAGE
Wash Pump/Motor	2
Booster	4
Heat Recovery Coil.....	6
Heat Recovery Cover	8
Fill Piping	10
Rinse Manifold.....	12
Wash Manifold - DH6000T	14
Wash Manifold - DH6000	16
Hoses	18
Spray Arms	20
Panels and HMI	22
Dish Rack Tracks.....	24
Hood and Handle - DH6000T	26
Hood and Handle - DH6000	28
Door Lock	30
Back Support and Guides - DH6000T	32
Bask Support and Guides - DH6000	34
Control Panel.....	36
Chemical Dispensing Pumps.....	38
Wash Tank	40
Dish Racks	42

Wash Pump/Motor

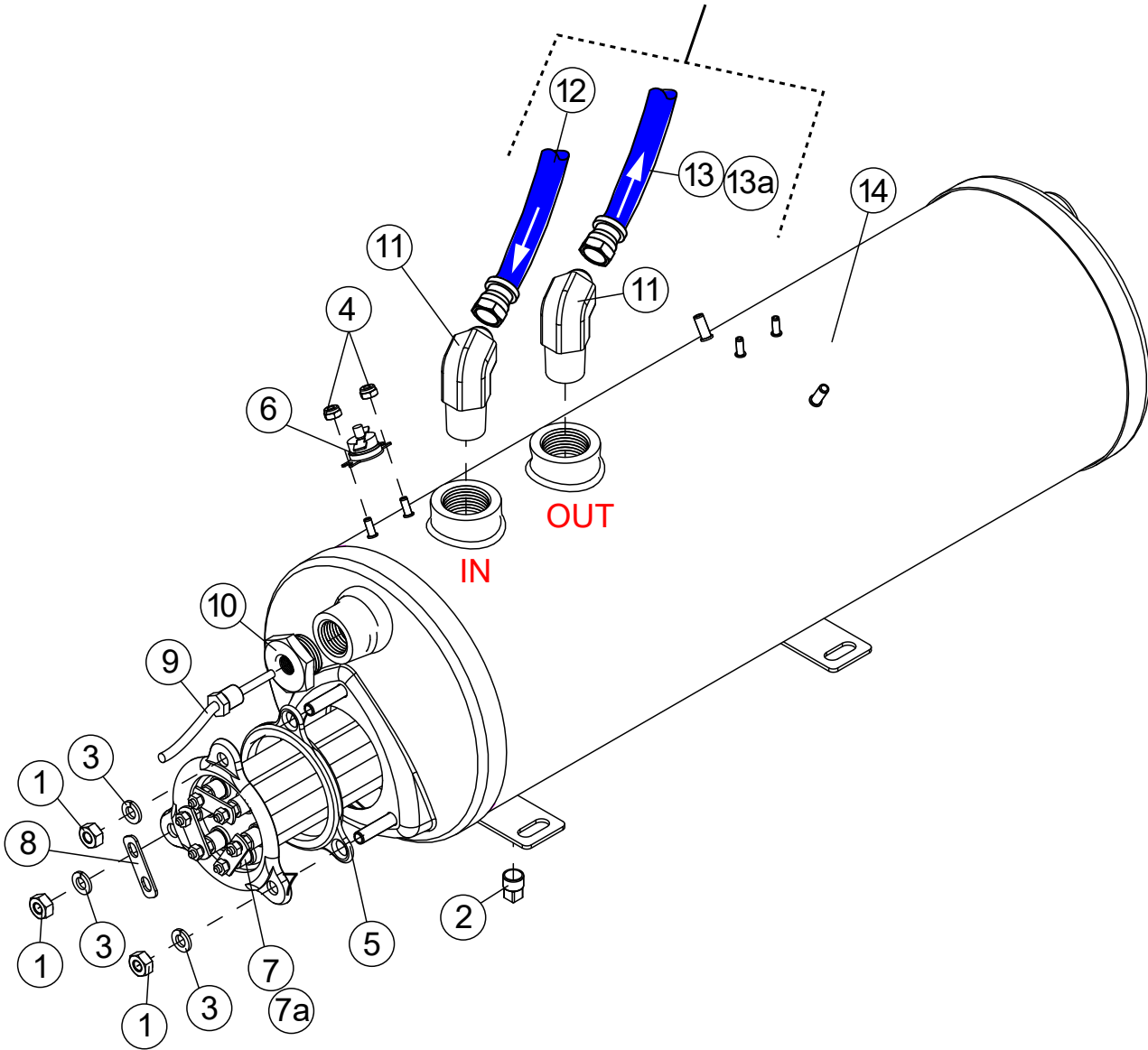


Item No.	Part No.	Description	Qty.
1	114134	SLINGER, WATER	1
2	107337	NUT, PLAIN M4	9
3	0512340	SCREW, M4 X 0.70 30 mm PHILLIPS PAN HEAD	9
4	114137	PLATE, BACKING, C/W CAPACITOR BRKT.	1
5	110285	GASKET, PUMP	1
6	114139	SEAL, PUMP	1
7	114140	WASHER	1
8	114141	IMPELLER	1
9	114142	WASHER	1
10	114143	WASHER, LOCK	1
11	114144	NUT, IMPELLER (LH THREADS)	1
12	114145	HOUSING, PUMP	1
13	112637	CAPACITOR 31.5 μ F	1
14	115143	1HP PUMP/2HP MOTOR ASSEMBLY COMPLETE 208-240VAC/60/1PH	A/R
---	115144	1HP PUMP/2HP MOTOR ASSEMBLY COMPLETE 208-266/360-460VAC/60/3PH	A/R
--	115429	1HP PUMP/2HP MOTOR ASSEMBLY COMPLETE 230V/50/1PH (For 380-415V/50/3 machines)	A/R

THE MOTOR CANNOT BE ORDERED SEPARATELY.

Booster

See pages 18-19 for VHR hoses.
Items 12, 13, & 13a below are NON-VHR hoses.

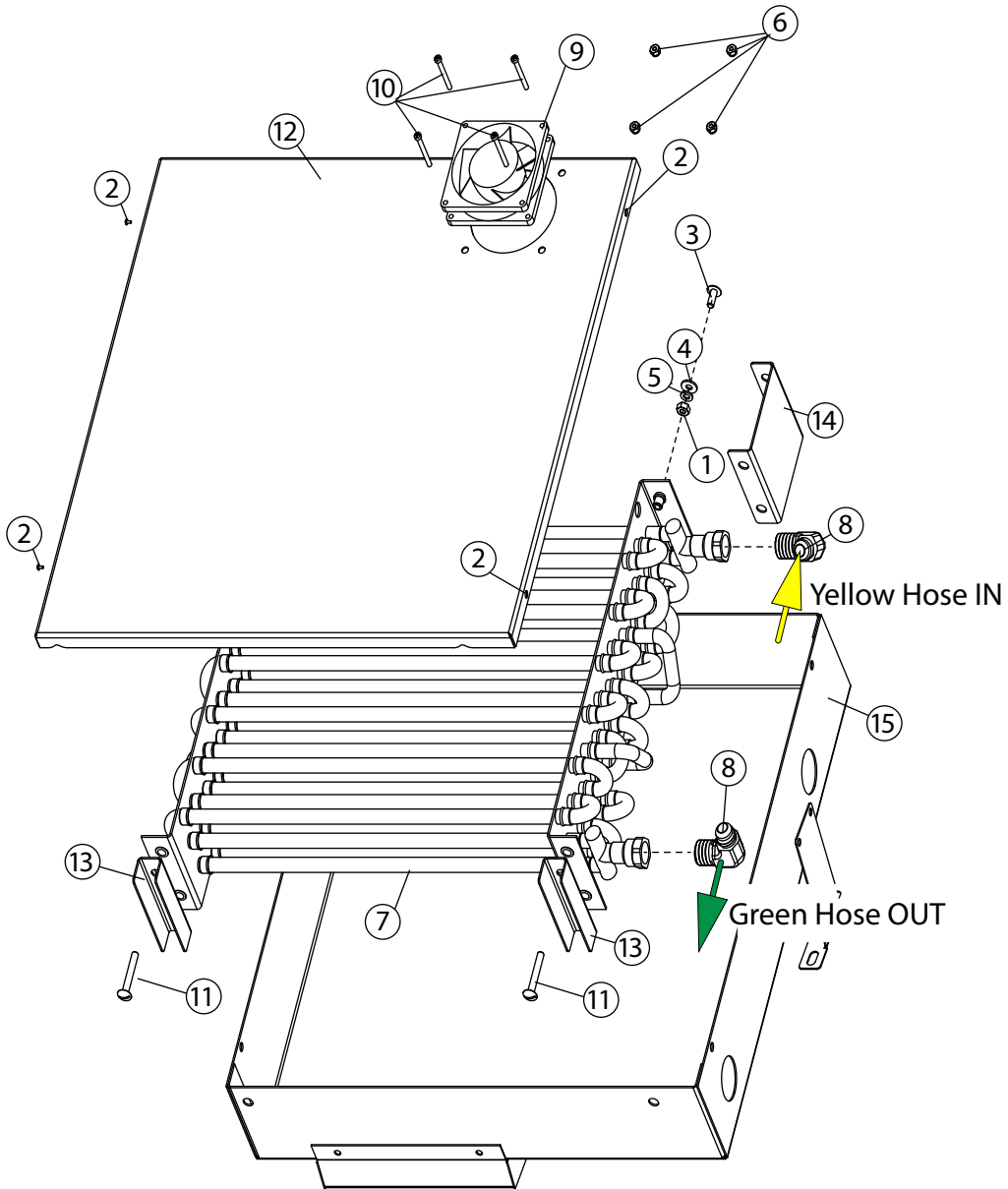


Item No.	Part No.	Description	Qty.
1	100003	NUT, PLAIN, 1/4-20 SST	6
2	100210	PLUG, 1/8" NPT SQ. HEAD, SST	1
3	106482	WASHER, LOCK 1/4" SPLIT SST	6
4	108954	NUT, GRIP, 6-32 W/NYLON INSERT SST	2
5	109985	SEAL, ELECTRIC HEATER FLANGE	1
6	113604	THERMOSTAT, FIXED, SNAP, 212°F	1
7	111233	HEATER, 7.5KW, 208-240V/60/1PH & 3PH	1
7a	108579	HEATER, 9KW, 480V/60/3PH	1
8	111488	JUMPER, STRIP HEATER (Same as 0508960)	1
9	117454	RTD TEMPERATURE SENSOR, 100Ω, 1" PROBE	1
10	115530	ADAPTER, THERMOMETER DIGITAL (Alt to 0512299)	1
11	117040	ELBOW , MALE 3/4 NPT, X 5/8" 37° FLARE JIC, BRASS	2
12*	421823	HOSE ASSY, 19" LG., INLET SUPPLY TO BOOSTER	1
13*	421018	HOSE, DH6000, BOOSTER TO MANIFOLD, BLUE	1
13a*	421004	HOSE, DH6000T, BOOSTER TO MANIFOLD, BLUE	1
14	0509042	BOOSTER TANK, WELDED ASSEMBLY	1

* Items 12, 13, & 13a for NON-VHR machines. See pages 18-19 for VHR hoses.

See pages 14-17 for final rinse hoses for NON-VHR and VHR hoses.

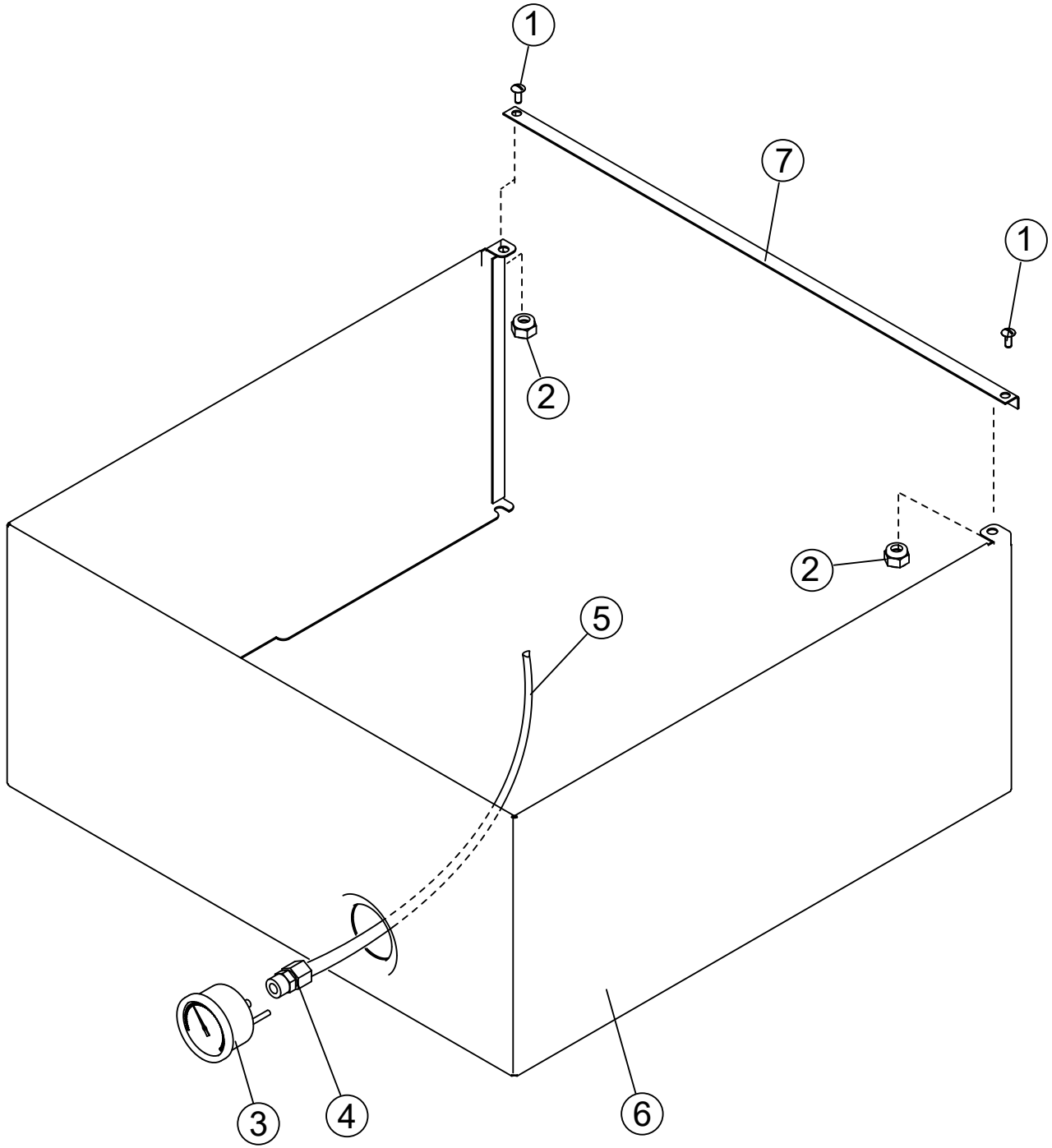
Heat Recovery Coil



Heat Recovery Coil

Item No.	Part No.	Description	Qty.
1	100003	NUT, HEX PLAIN, 1/4-20 SST	2
2	100007	SCREW, TRUSS HD., 10-32" X 3/8" SST	4
3	100779	SCREW, TRUSS HD., 1/4-20 X 5/8" TRUSS HEAD SST	4
4	106026	WASHER, FLAT, 1/4"	2
5	106482	WASHER, LOCK 1/4 SPLIT SST	2
6	107965	NUT, GRIP 8-32 SST W/NYLON INSERT	4
7	114931	COIL, BATTERY, CONDENSATE REMOVAL	1
8	115100	ELBOW, MALE 1/2 NPT X 1/2", 37° FLARE JIC	2
9	116783	FAN, NMB 24VDC, 92MM X 92MM, 91.8 CFM	1
10	116805	SCREW, FILISTER HEAD, 8-32 X 1-1/2" SST	4
11	117013	SCREW, TRUSS HEAD 1/4-20 X 1-3/4" SST	2
12	338679	COVER, TOP COIL	1
13	338764	COIL SPACER, SHORT	2
14	338765	COIL SPACER, LONG	2
15	339276	BOX, COIL WELDMENT	1
---	338730	BEAUTY PANEL, TOP (NOT SHOWN)	1
---	116688	BUSHING, SNAP-IN SMOOTH BORE 1/2" DIA. (NOT SHOWN)	1
---	338791	PANEL, BEAUTY, REAR CROSS BAR ASSY. (NOT SHOWN)	1

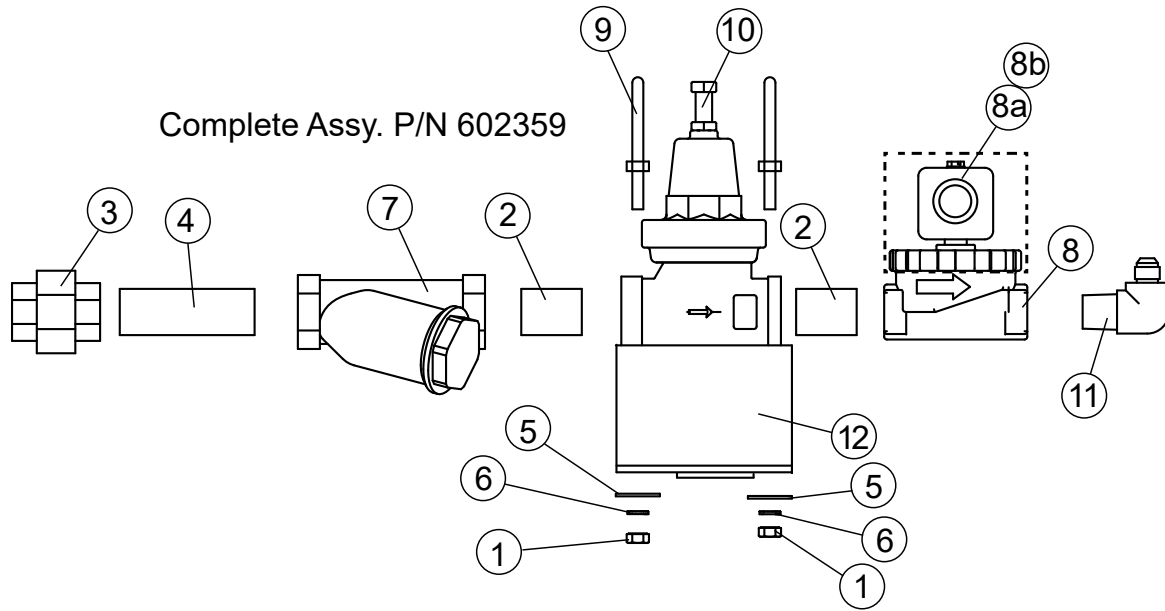
Heat Recovery Cover



Heat Recovery Cover

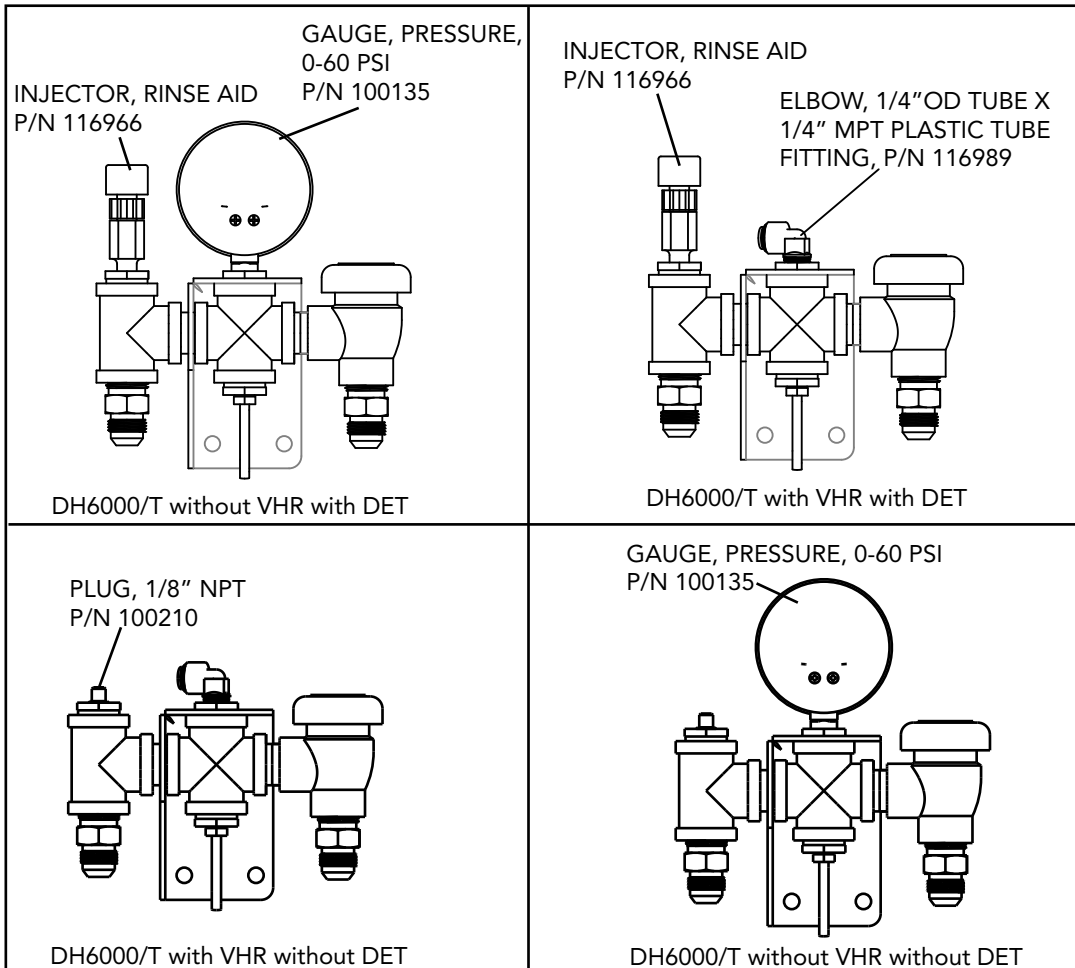
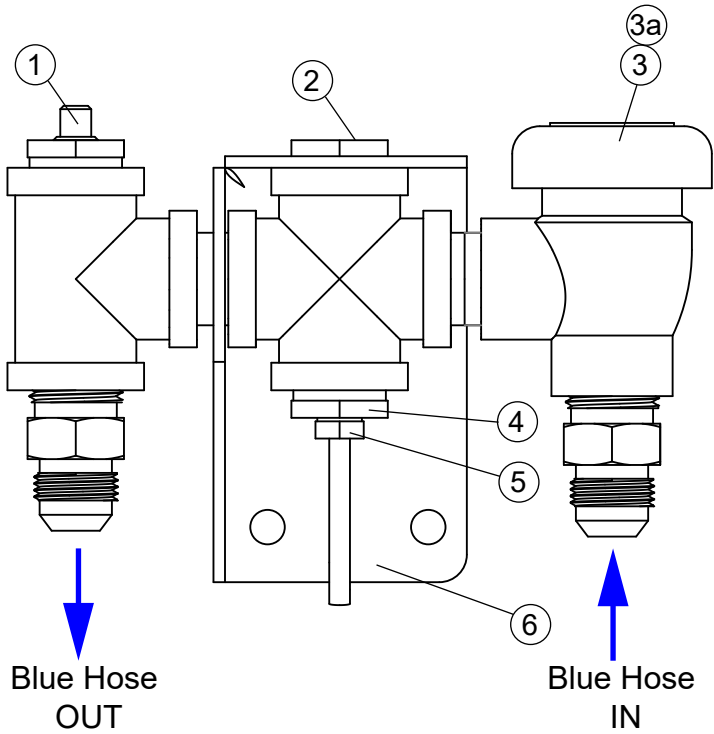
Item No.	Part No.	Description	Qty.
1	100097	SCREW, TRUSS HEAD, 10-32 X 1/2" SST	2
2	107967	NUT, GRIP 1/4-20 W/NYLON INSERT SST	6
3	109812	GAUGE-PRESSURE, 0-60 PSI, PANEL	1
4	117007	ADAPTER, 1/4" O.D. X 1/4" MPT PLASTIC, ENDRIES	1
5	107414	TUBING, HIGH DENSITY	8FT.
6	338730	DH6000T, VHR, TOP BEAUTY PANEL	1
7	338790	DH6000T, VHR, BEAUTY PANEL, REAR CROSS BAR	1

Fill Piping



Item No.	Part No.	Description	Qty.
1	100003	NUT, HEX PLAIN, 1/4-20 SST	4
2	100184	NIPPLE, 3/4" NPT X CLOSE BRASS	2
3	100571	UNION, 3/4" NPT BRASS	1
4	102653	NIPPLE, 3/4" X 4" LG., BRASS	1
5	104925	WASHER, FLAT 1/4"	4
6	106482	WASHER, LOCK 1/4" SPLIT SST	4
7	110768	STRAINER, LINE 3/4" NPT BRONZE FEMALE	1
8	111437	VALVE, SOLENOID, 3/4" NPT HW	1
8a	114839	KIT, REPAIR, VALVE 3/4" HW	A/R
8b	111472	COIL, SOLENOID 3/4" 120VAC	A/R
9	115169	U-BOLT, 1/4-20 X 1-3/8" L THD., X 1-1/2" OD	2
10	116945	VALVE, PRV 25-75 PSI 3/4" NPT	1
11	117040	ELBOW, MALE 3/4" NPT X 5/8" 37° FLARE JIC BRASS	1
12	340542	BRACKET, INLET PLUMBING SUPPLY	1

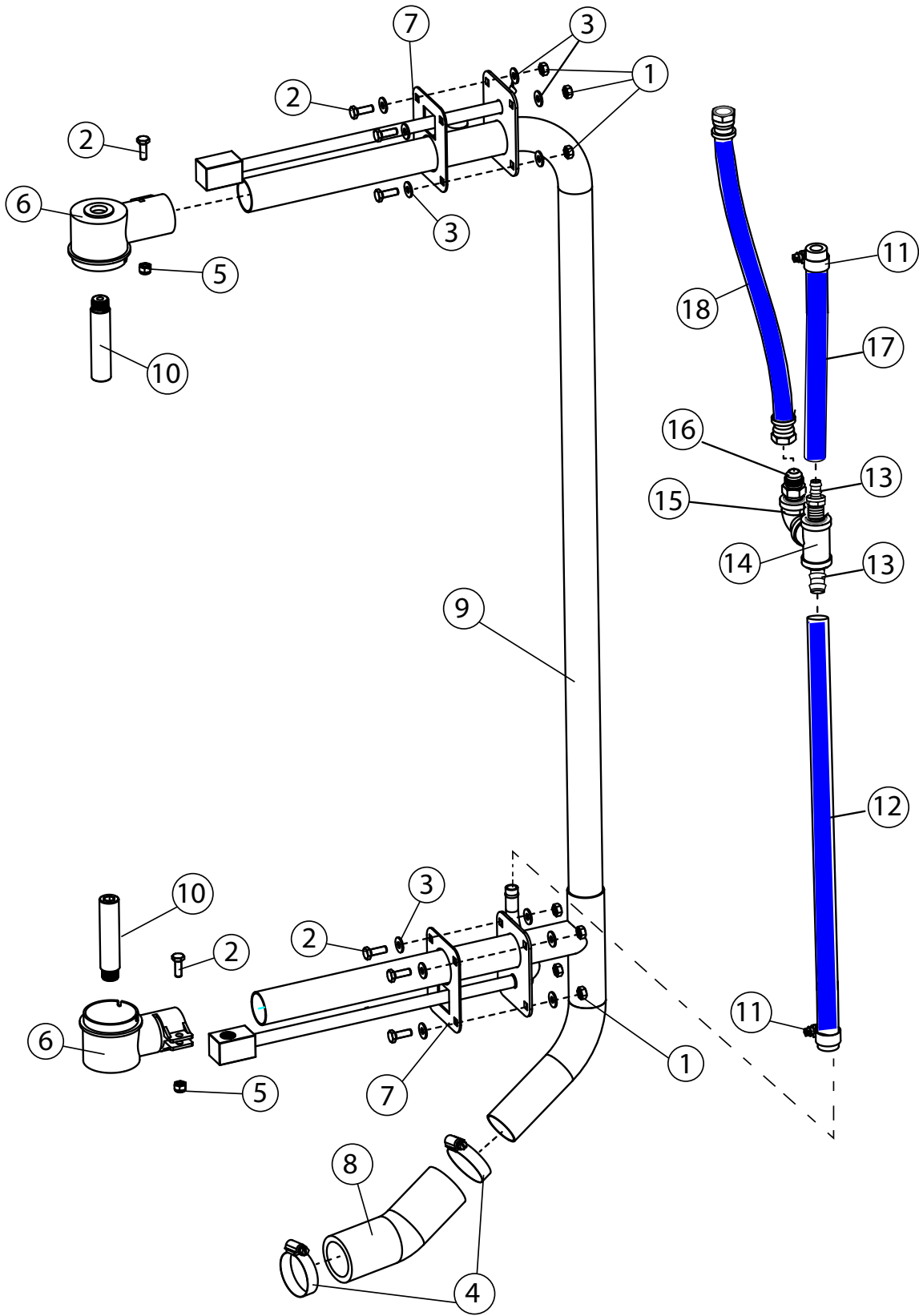
Rinse Manifold



Rinse Manifold

Item No.	Part No.	Description	Qty.
1	100210	PLUG, 1/8" SQ. HEAD SST	1
2	102388	BUSHING, REDUCING 1/2" NPT X 1/4" NPT BRASS	1
3	100500	BREAKER, VACUUM 1/2" BRONZE	1
3a	900836	KIT, REPAIR, VACUUM BREAKER	A/R
4	114717	BUSHING, REDUCING 1/2" NPT X 1/8" NPT SST	1
5	117454	RTD TEMPERATURE SENSO, 100Ω, 1" PROBE	1
6	339057	BRACKET, RINSE PLUMBING	1

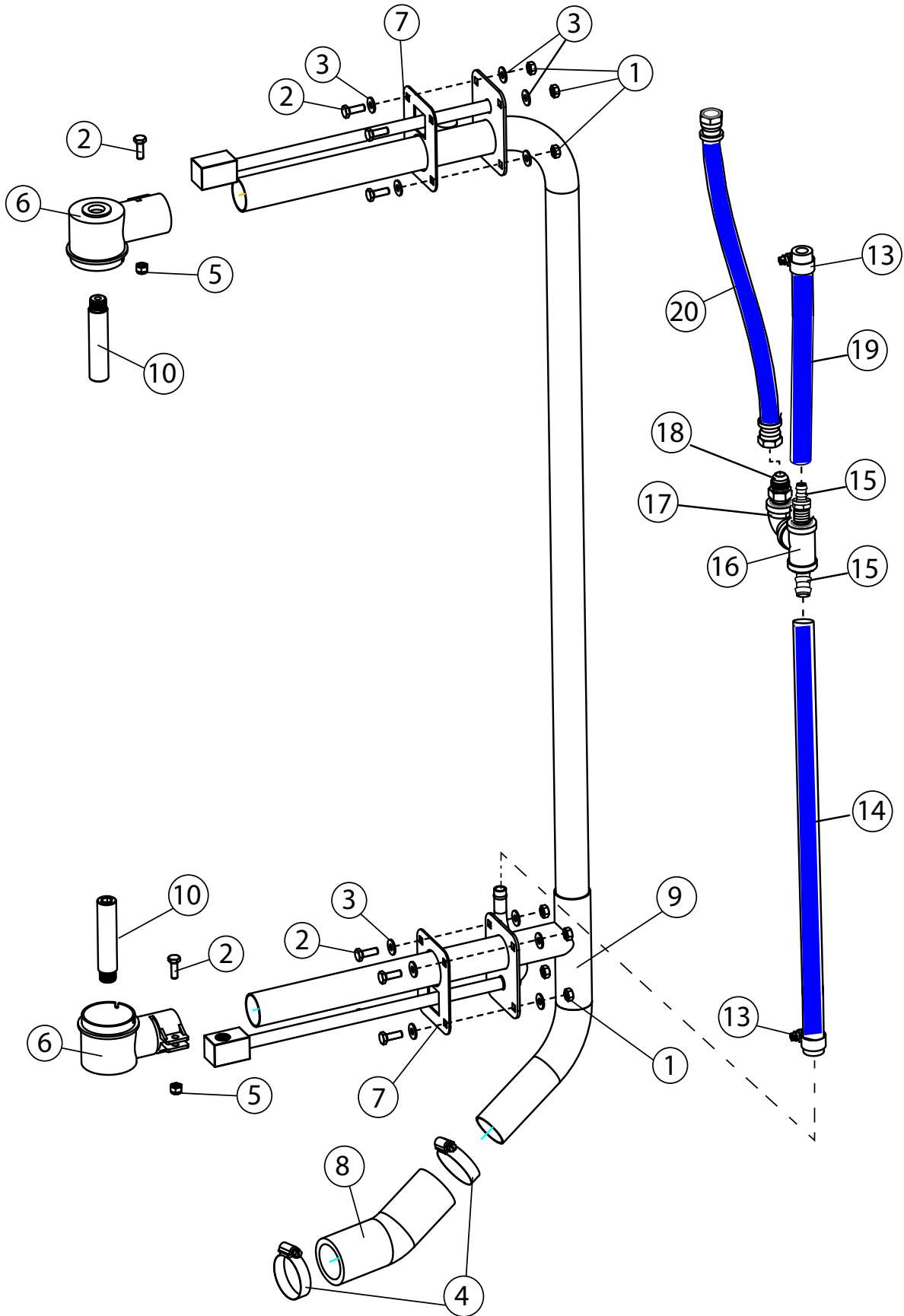
Wash Manifold - DH6000T (Non-VHR and VHR)



Wash Manifold - DH6000T (Non-VHR and VHR)

Item No.	Part No.	Description	Qty.
1	107967	NUT GRIP, 1/4-20 W NYLON INSERT SST	8
2	100736	BOLT, 1/4-20 X 3/4", HEX HD., SST	10
3	106026	WASHER, FLAT 1/4" SST	12
4	107340	CLAMP, HOSE M28 W/CS SCREW	2
5	107967	GRIP NUT, 1/4-20 SST W/NYLON INSERT	2
6	109864	SUPPORT, WASH ARM	2
7	116940	GASKET, STANDPIPE WASH	2
8	117215	HOSE, DISCHARGE, DH6000	1
9	338832	STANDPIPE, WELDMENT, DH6000T	1
10	0507445	SPINDLE, WASHARM	2
11	105994	CLAMP, HOSE, 1/2"-1-18" W/CS SCREW	2
12	207164-S	HOSE ASSY. 1/2" ID X 22" LG., BLUE	1
13	115142	HOSEBARB, MALE, 1/2"NPT X 1/2" HOSE, BRASS	1
14	102514	TEE, 1/2" NPT, BRASS	1
15	115101	CONNECTOR, MALE, 1/2" NPT X 1/2 "37°, FLARE JIC	1
16	102438	ELBOW, STREET, 1/2" NPT X 90° BRASS	1
17	207148-S	HOSE ASSY. 1/2" X 12" LG., BLUE	1
18	419974	HOSE ASSY. 1/2" ID X 14" LG., BLUE	1

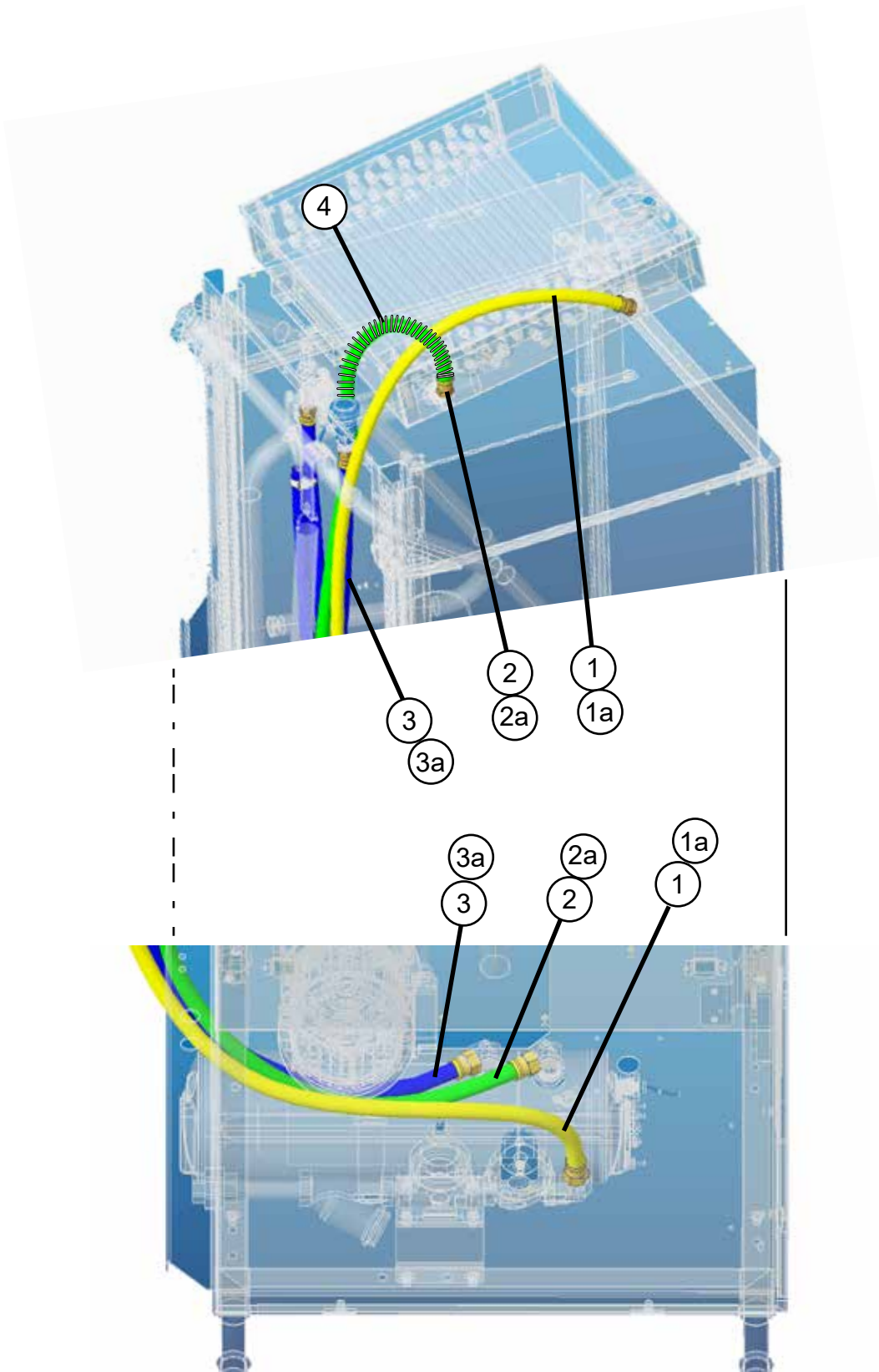
Wash Manifold - DH6000 (Non-VHR and VHR)



Wash Manifold - DH6000 (Non-VHR and VHR)

Item No.	Part No.	Description	Qty.
1	107967	NUT GRIP, 1/4-20 W/NYLON INSERT SST	8
2	100736	BOLT, 1/4-20 X 3/4", HEX HD., SST	10
3	106026	WASHER, FLAT 1/4" SST	12
4	107340	CLAMP, HOSE M28 W/CS SCREW	2
5	107967	GRIP NUT, 1/4-20 SST W/NYLON INSERT	2
6	109864	SUPPORT, WASH ARM	2
7	116940	GASKET, STANDPIPE WASH	2
8	117215	HOSE, DISCHARGE, DH6000	1
9	338832	STANDPIPE, WELDMENT, DH6000T	1
10	0507445	SPINDLE, WASHARM	2
11	602093	PIPING ASSY., FINAL RINSE	1
13	105994	CLAMP, HOSE, 1/2"-1-18" W/CS SCREW	2
14	207158-S	HOSE, 1/2" ID X 16" LG., BLUE	1
15	115142	BARB, HOSE, MALE, 1/2"NPT X 1/2" HOSE, BRASS	1
16	102514	TEE, 1/2" NPT, BRASS	1
17	102438	ELBOW, STREET, 1/2" NPT X 90° BRASS	1
18	115101	CONNECTOR, MALE, 1/2" NPT X 1/2"37°, FLARE JIC	1
19	207781-S	HOSE, 1/2" ID X 9-1/2" LG., BLUE	1
20	419325	HOSE ASSY., 1/2" ID X 11" LG., FLARE JIC	1

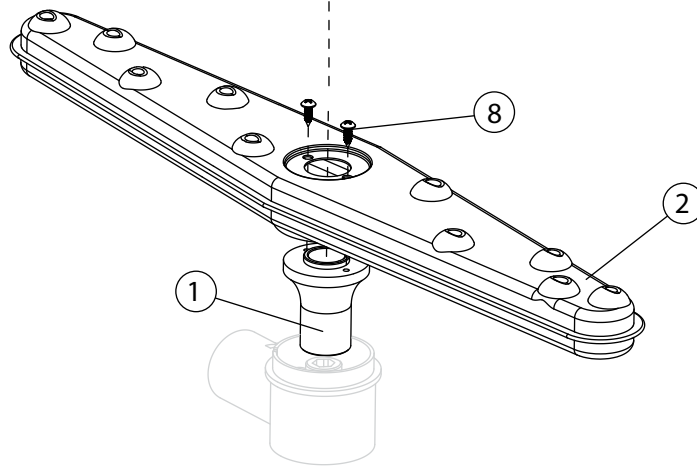
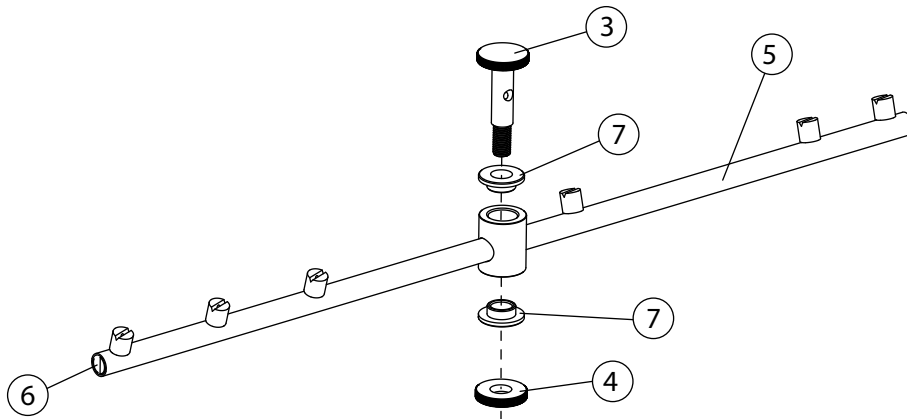
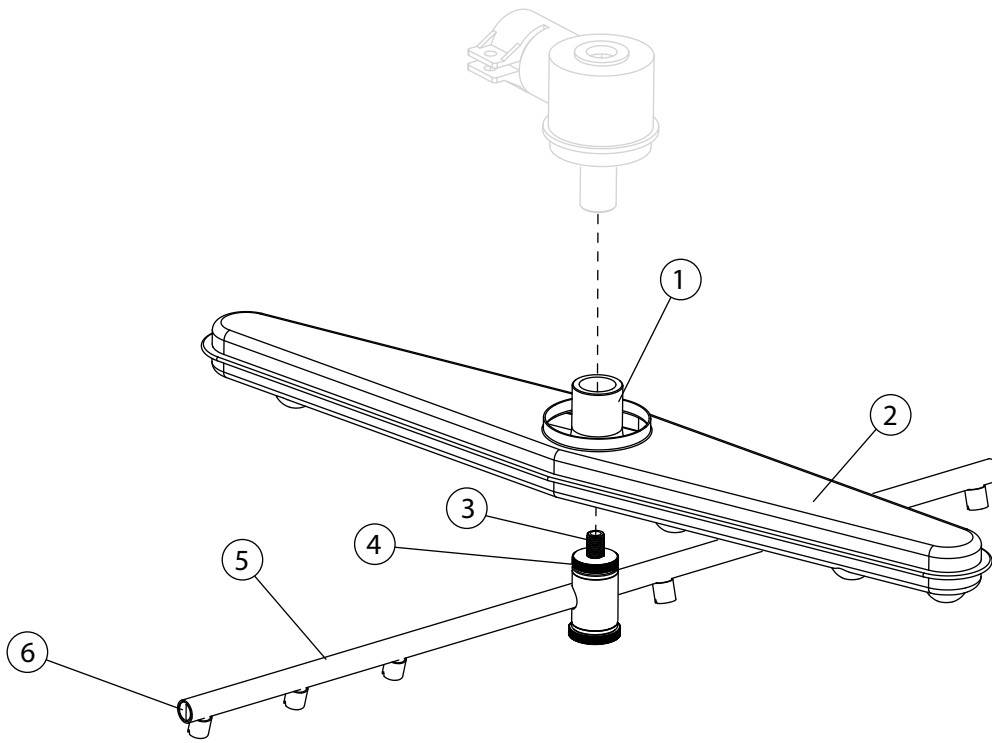
Hoses - DH6000, DH6000T (VHR)



Hoses - DH6000, DH6000T (VHR)

Item No.	Part No.	Description	Qty.
1	421006	DH6000T HOSE, COLD INLET TO COIL, YELLOW, VHR	1
1a	421020	DH6000 HOSE, COLD INLET TO COIL, YELLOW, VHR	1
2	421005	DH6000T HOSE, COIL INTO BOOSTER, GREEN, VHR	1
2a	421019	DH6000 HOSE, COIL INTO BOOSTER, GREEN, VHR	1
3	421004	DH6000T HOSE, BOOSTER TO MANIFOLD, BLUE	1
3a	421018	DH6000 HOSE, BOOSTER TO MANIFOLD, BLUE	1
4	117752	SPRING, ANTI-KINK, 3/4" O.D. HOSE X 12" LONG	1

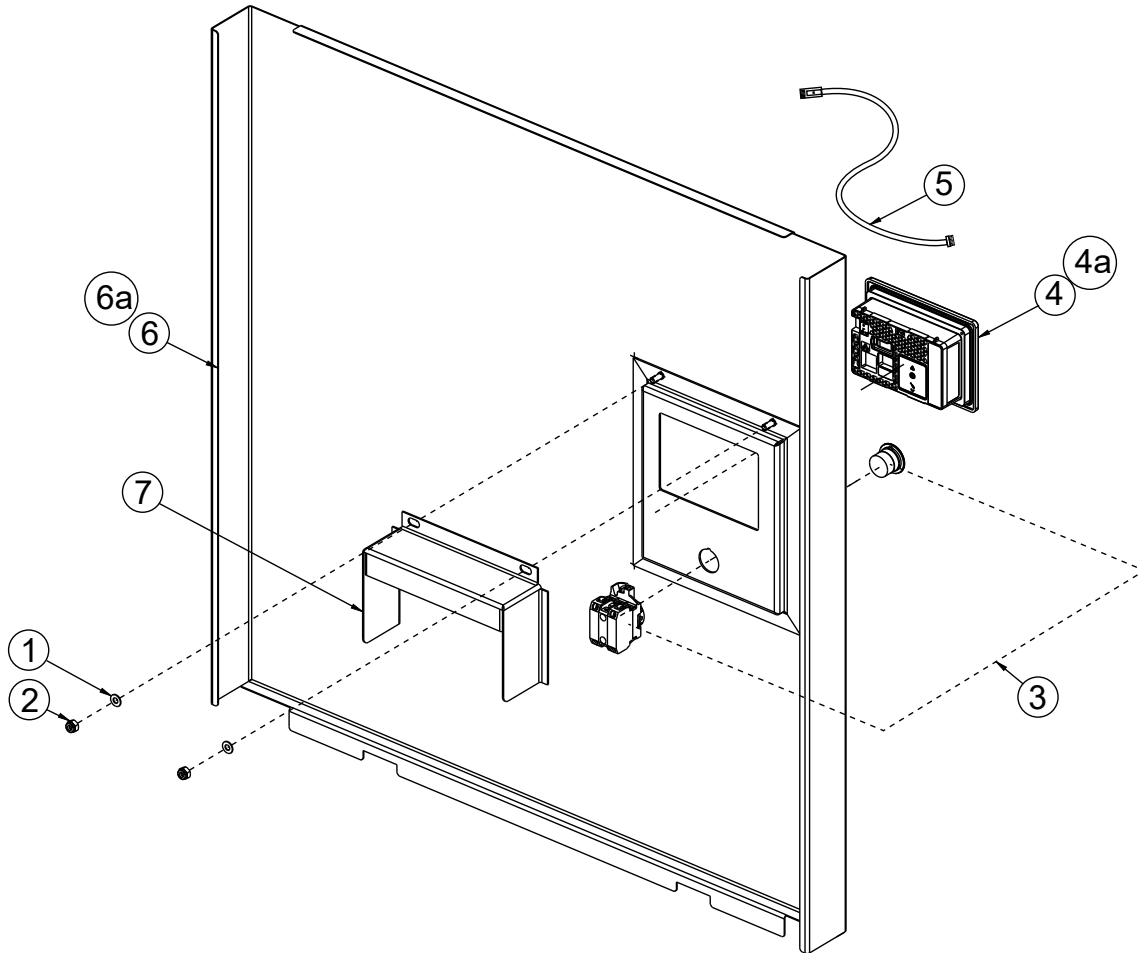
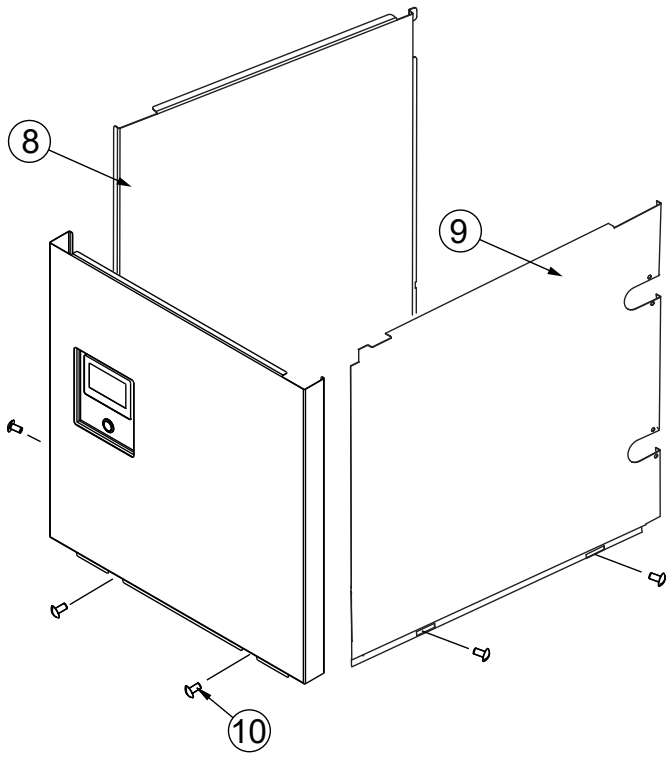
Spray Arms



Spray Arms

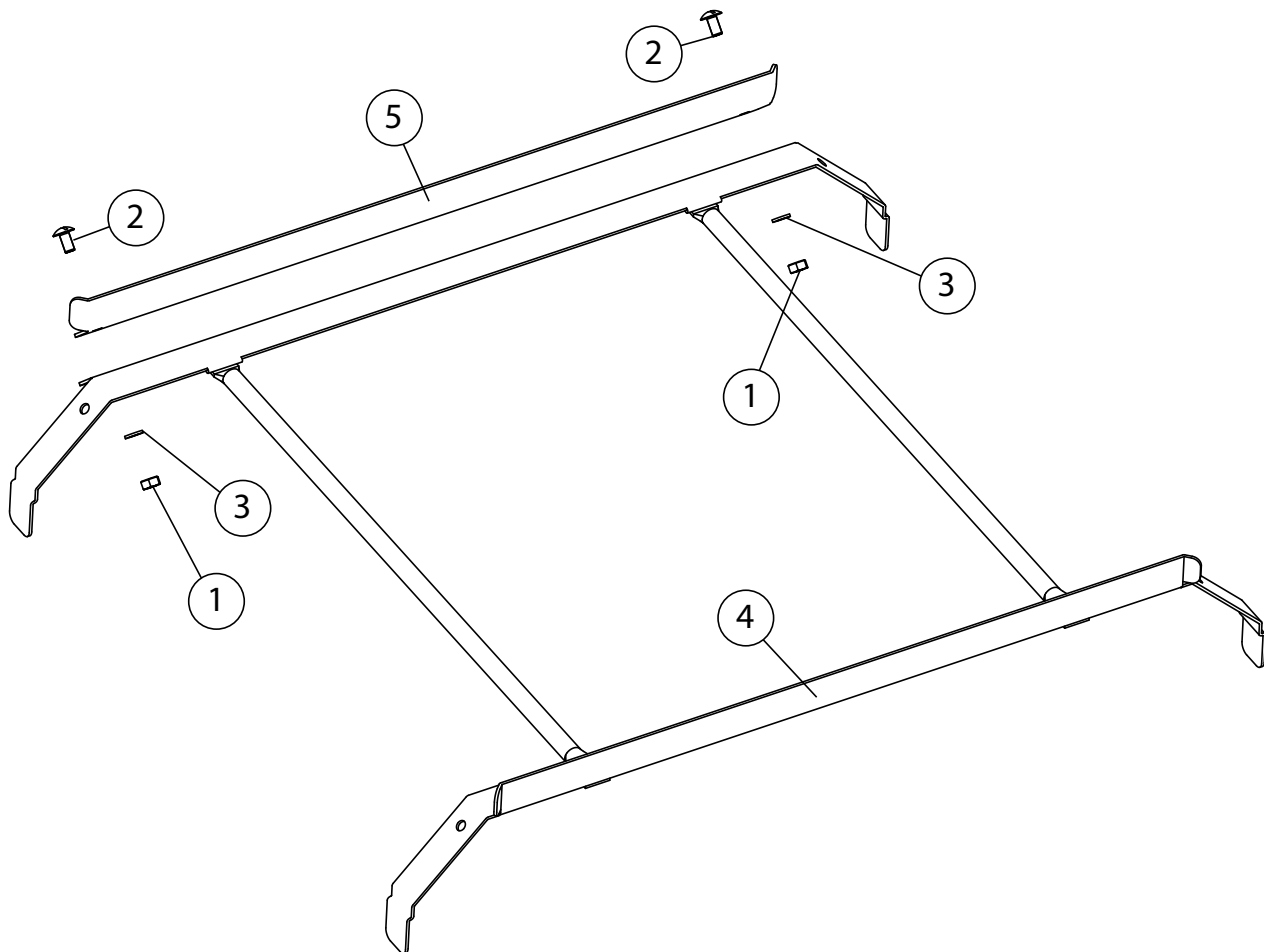
Item No.	Part No.	Description	Qty.
1	207096	WASHARM, BEARING	2
2	114858	WASHARM, WELDMENT	2
3	0507443	SPINDLE, RINSE ARM	2
4	114556	NUT, SPINDLE	2
5	115222	RINSE ARM, WELDMENT	2
6	114861	END CAP, HEADLESS, 7/16-20 SST	6
7	113514	BEARING, RINSE ARM	4
8	109835	SCREW, #8 X 1/2" SELF-TAPPING PAN HEAD, PHILLIPS	4
---	900975	RINSE ARM ASSEMBLY, COMPLETE (INCLUDES ITEMS 5-7)	2
---	900954	WASH ARM ASSEMBLY, COMPLETE (INCLUDES ITEMS 1, 2 and 8)	2

Panels and HMI



Item No.	Part No.	Description	Qty.
1	107033	WASHER, FLAT	2
2	107966	NUT GRIP, 10-32 X SST, W/NYLON INSERT	2
3	116852	PUSHBUTTON, ON/OFF 22MM	1
4*	116889	SCHNEIDER HMI, (Prior to S/N D230623034)	1
4a**	117543	WIEN TEK HMI, (Beginning with S/N D230623034)	1
5	116919	NETWORK CABLE, SCHNEIDER PLC TO HMI	1
6*	330488	PANEL, FRONT (Use with Item 4 only)	1
6a**	340799	PANEL, FRONT (Use with Item 4a only)	1
7	339532	SHIELD, SPLASH, HMI	1
8	340479	PANEL, LEFT-HAND SIDE	1
9	339004	PANEL, RIGHT-HAND SIDE	1
10	100073	SCREW, 1/4-20 X 1/2", TRUSS HEAD, SST	6
---	703309	COMPLETE ASSEMBLY, SCHNEIDER HMI INCLUDES ITEMS: 1, 2, 3, 4, 5, 6	A/R
---	703375	COMPLETE ASSEMBLY, WEINTEK HMI INCLUDES ITEMS: 1, 2, 3, 4a, 5, 6a	A/R

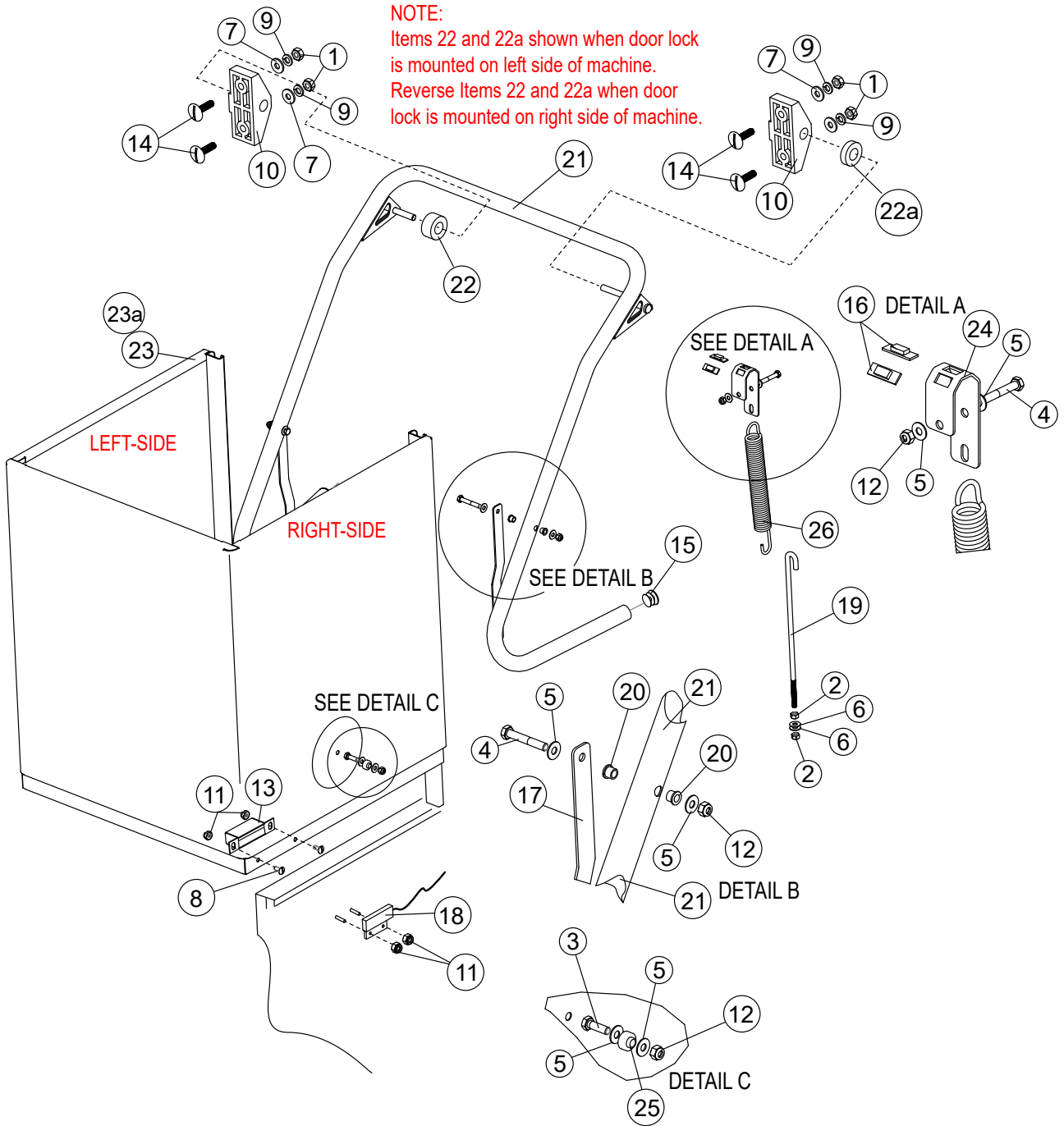
Dish Rack Tracks



Dish Rack Tracks

Item No.	Part No.	Description	Qty.
1	100003	HEX, PLAIN NUT 1/4-20	2
2	100073	SCREW, 1/4-20 X 1/2", TRUSS HEAD, SST	2
3	106482	WASHER, LOCK 1/4" SPLIT SST	2
4	335780	TRACK WELDMENT	1
5	332023	TRACK, RAIL ADJUST	1

Hood and Handle - DH6000T



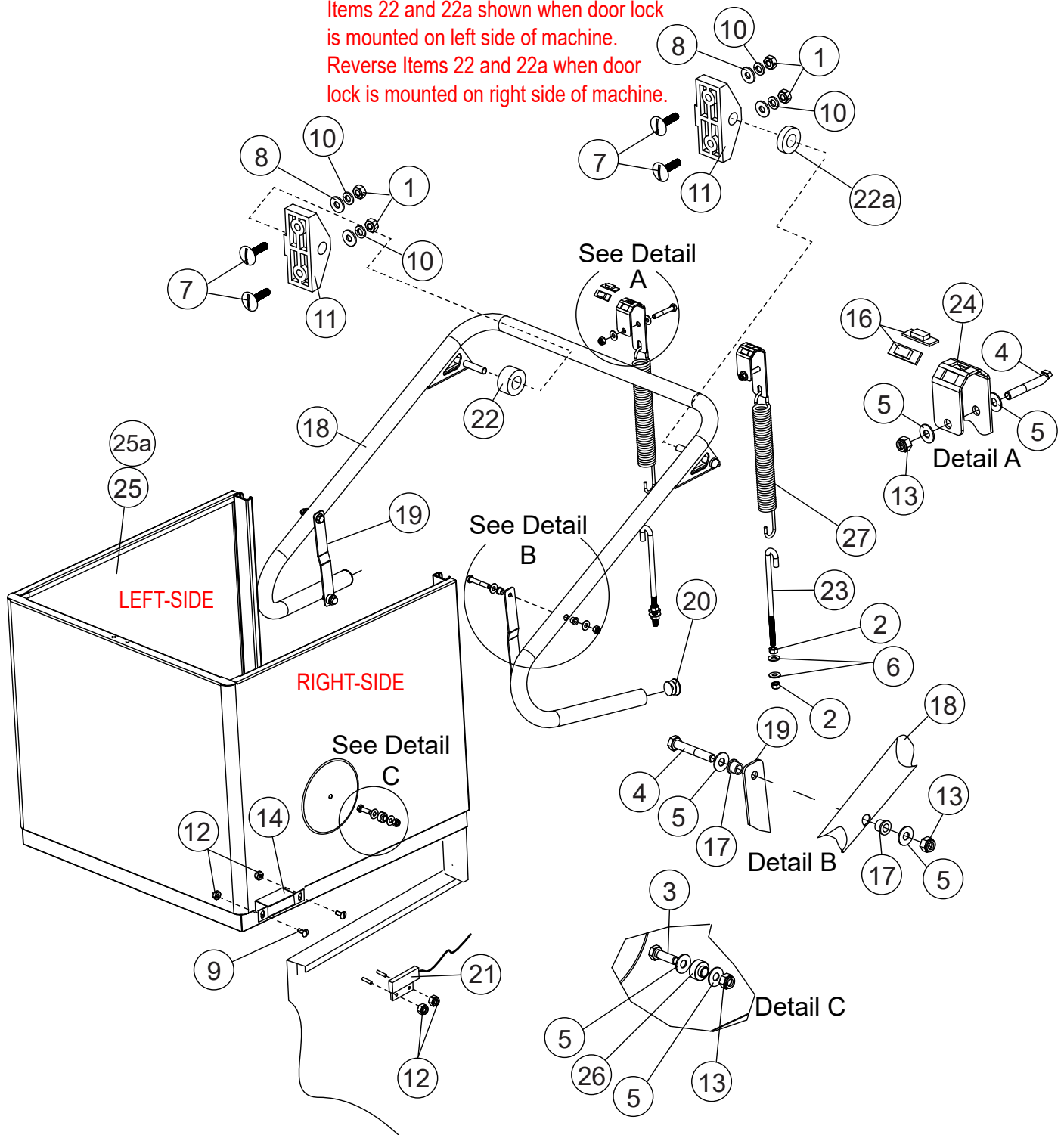
Item No.	Part No.	Description	Qty.
1	100003	HEX PLAIN NUT, 1/4-20 SST	4
2	100140	HEX PLAIN NUT, 3/8-16 SST	4
3	100740	BOLT, HEX HEAD, 5/16-18 X 1" SST	2
4	100742	BOLT, HEX HEAD, 5/16-18 X 2" SST	4
5	102376	WASHER, FLAT 5/16" SST	12
6	104618	WASHER, FLAT 3/8" SST	4
7	106026	WASHER, FLAT 1/4" SST	4
8	106382	SCREW, TRUSS HEAD 6-32 X 3/8" SST	2
9	106482	WASHER, LOCK 1/4" SPLIT SST	4
10	107399	SUPPORT, PIVOT BLOCK DOOR HANDLE	2
11	108954	NUT GRIP, 6-32 SST W/NYLON INSERT	4
12	109009	NUT GRIP, 5/16-18 SST W/NYLON INSERT	6
13	113937	MAGNET, ALEPH	1
14	115286	SCREW, 1/4-20 X 1" LG FLAT WIDE HEAD	1
15	115627	END CAP, LIFT HANDLE	2
16	115637	BUSHING, LIFT ARM	4
17	115641	LINK, HOOD ARM	2
18	113721	SWITCH, REED, DOOR SAFETY	2
19	116231	J-BOLT, 3/8-16 X 14" LG	2
20	116275	BEARING, FLANGED, SLEEVED BRONZE OIL EMBEDDED	4
21	116804	LIFT ARM, WELDMENT	1
22	117440	SPACER BUSHING (Installed on door lock side)	1
22a	117441	SPACER BUSHING (Installed on opposite side of door lock)	1
23	336125	HOOD, WELDMENT, CHAMPION (Production Only)	1
23a	336125-S	HOOD, WELDMENT, CHAMPION (For Field Replacement)	1
24	336434	BRACKET, SPRING	2
25	0509264	BUSHING, SIDE DOOR	2
26	0510459	SPRING, DOOR	2

Hood and Handle - DH6000

NOTE:

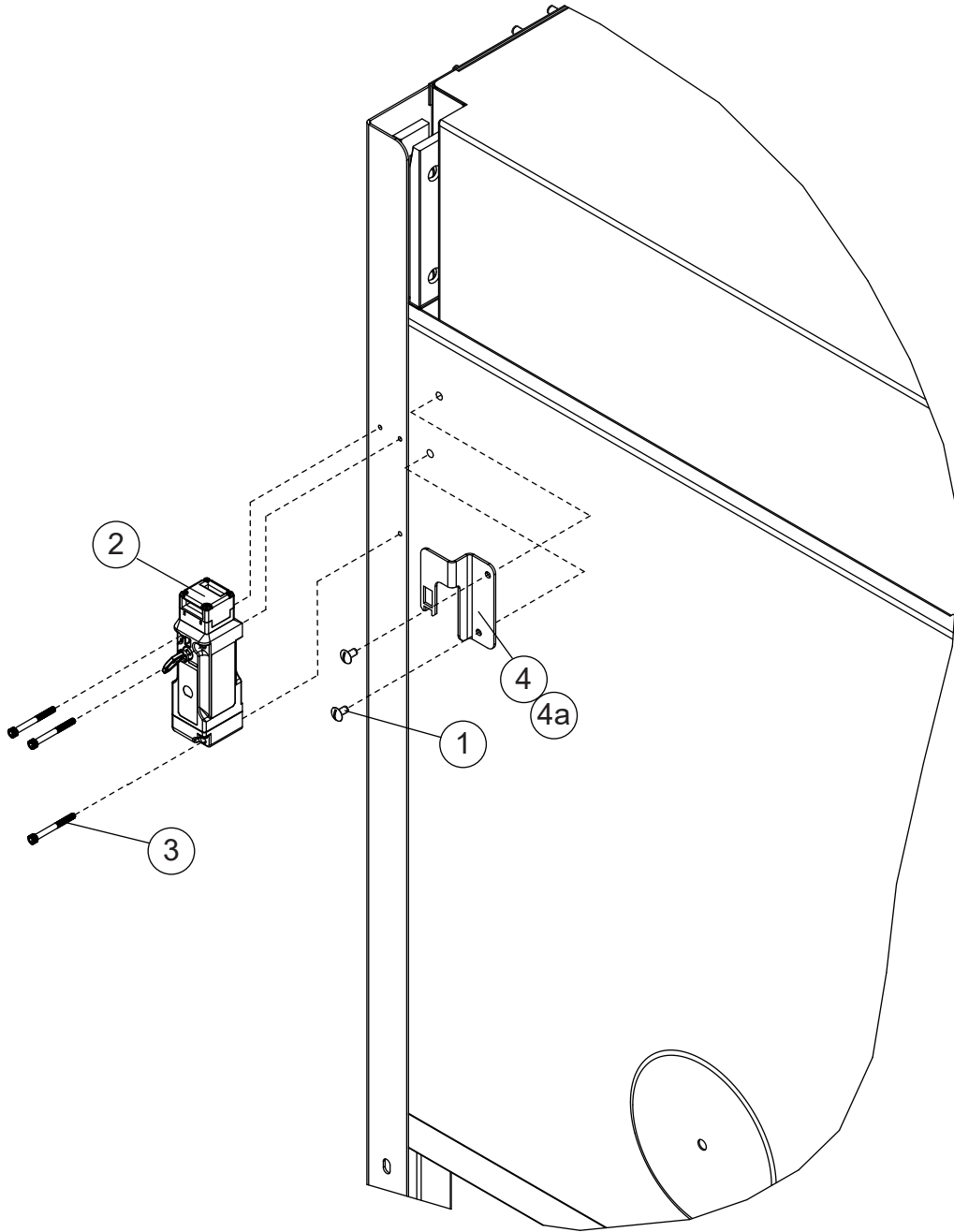
Items 22 and 22a shown when door lock is mounted on left side of machine.

Reverse Items 22 and 22a when door lock is mounted on right side of machine.



Item No.	Part No.	Description	Qty.
1	100003	HEX PLAIN NUT, 1/4-20 SST	4
2	100140	HEX PLAIN NUT, 3/8-16 SST	4
3	100740	BOLT, HEX HEAD, 5/16-18 X 1" SST	2
4	100742	BOLT, HEX HEAD, 5/16-18 X 2" SST	4
5	102376	WASHER, FLAT 5/16" SST	12
6	104618	WASHER, FLAT 3/8" SST	4
7	105286	SCREW, TRUSS HEAD 1/4-20 X 1" SST	4
8	106026	WASHER, FLAT 1/4" SST	4
9	106382	SCREW, TRUSS HEAD 6-32 X 3/8" SST	2
10	106482	WASHER, LOCK 1/4" SPLIT SST	4
11	107399	SUPPORT, PIVOT BLOCK DOOR HANDLE	2
12	108954	NUT GRIP, 6-32 SST W/NYLON INSERT	4
13	109009	NUT GRIP, 5/16-18 SST W/NYLON INSERT	6
14	113937	MAGNET, ALEPH	1
15	115627	END CAP, LIFT HANDLE	2
16	115637	BUSHING, LIFT ARM	4
17	116275	BEARING, FLANGED, SLEEVED BRONZE OIL EMBEDDED	4
18	116768	LIFT ARM, DOOR	1
19	116772	LINK ARM, DOOR	2
20	115627	END CAP, LIFT HANDLE	2
21	113721	SWITCH, REED, DOOR SAFETY	1
22	117440	SPACER BUSHING (Installed on door lock side)	1
22a	117441	SPACER BUSHING (Installed on opposite side of door lock)	1
23	117064	J-BOLT, 8" LG., 3/8-16 SST	2
24	336434	BRACKET, SPRING	2
25	338433	DOOR WELDMENT (Production ONLY)	1
25a	338433-S	DOOR WELDMENT (For Field Replacement)	1
26	0509264	BUSHING, SIDE DOOR	2
27	0510459	SPRING, DOOR	2

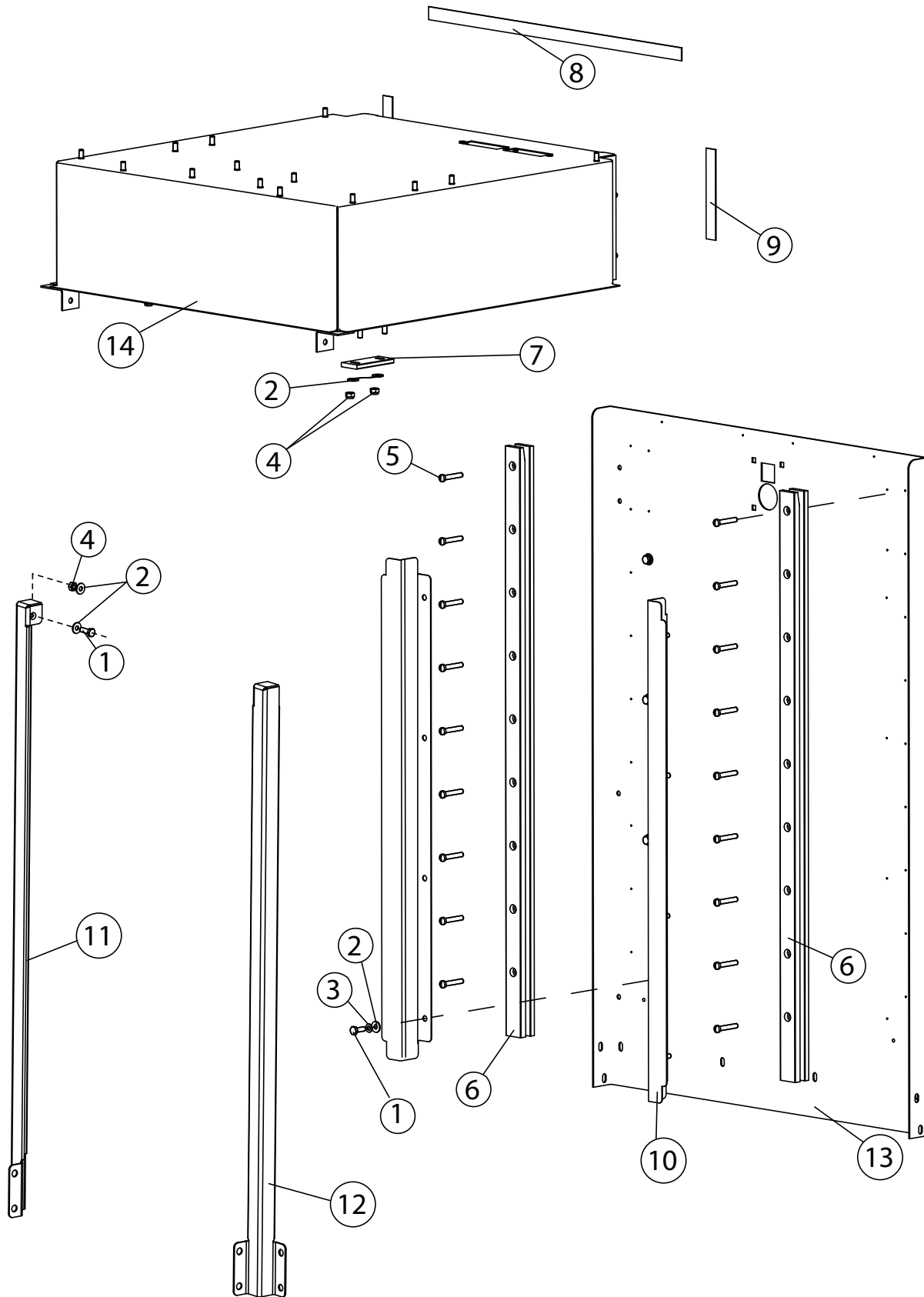
Door Lock



LEFT-HAND MOUNTING SHOWN

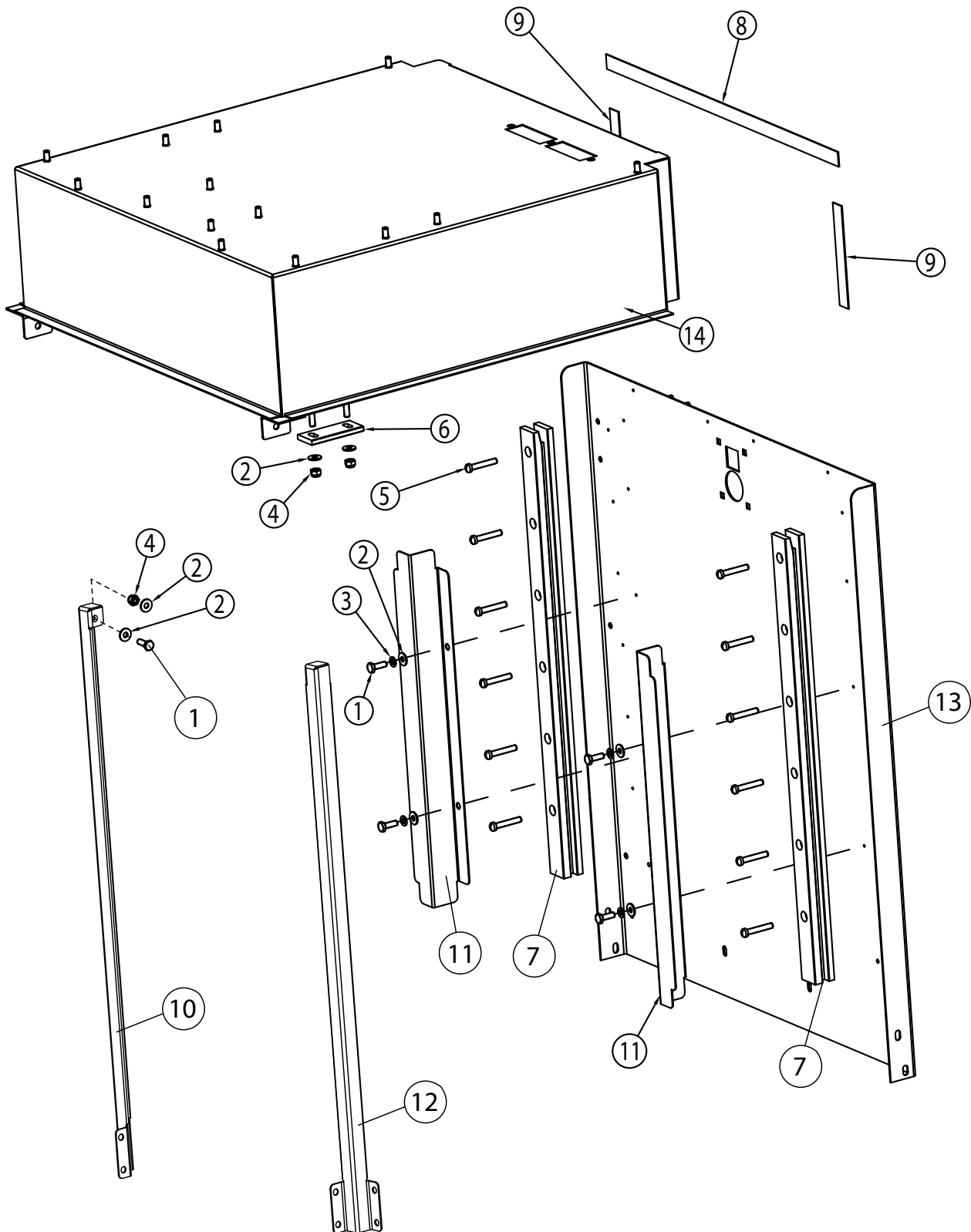
Item No.	Part No.	Description	Qty.
1	100097	SCREW, 10-32 X 1/2", TRUSS HEAD SST	2
2	117232	SWITCH, INTERLOCK, IDEC	1
3	117372	SOCKET HEAD, CAP SCREW, 8-32 X 1.625" X 18-8 SST	3
4	340513	DOOR LOCK PLUNGER, LH-MOUNTED	1
4a	340512	DOOR LOCK PLUNGER, RH-MOUNTED	1

Back Support and Guides - DH6000T



Item No.	Part No.	Description	Qty.
1	100736	BOLT, HEX HEAD, 1/4-20 X 3/4" SST	18
2	106026	WASHER, FLAT 1/4" SST	24
3	106482	WASHER, LOCK 1/4" SPLIT, SST	16
4	107967	NUT, GRIP, 1/4-20 SST W/NYLON INSERT	6
5	114866	SCREW, FILLISTER HEAD, 1/4-20 X 1-1/2" SST	18
6	114886	GUIDE, HOOD	2
7	116425	HOOD, GUIDE STATIONARY	2
8	207315	GASKET, 20-1/4" LG X 3/4" WD PORON 1/8" THK.	1
9	207316	GASKET, 5-1/4" LG X 3/4" WD PORON 1/8" THK.	2
10	334621	BAFFLE, DEFLECTOR HOOD	2
11	340532	VERTICAL HOOD SUPPORT, LH	1
12	340533	VERTICAL HOOD SUPPORT, RH	1
13	338486	BACK SUPPORT, WELDMENT	1
14	339587	TOP, HOOD	1

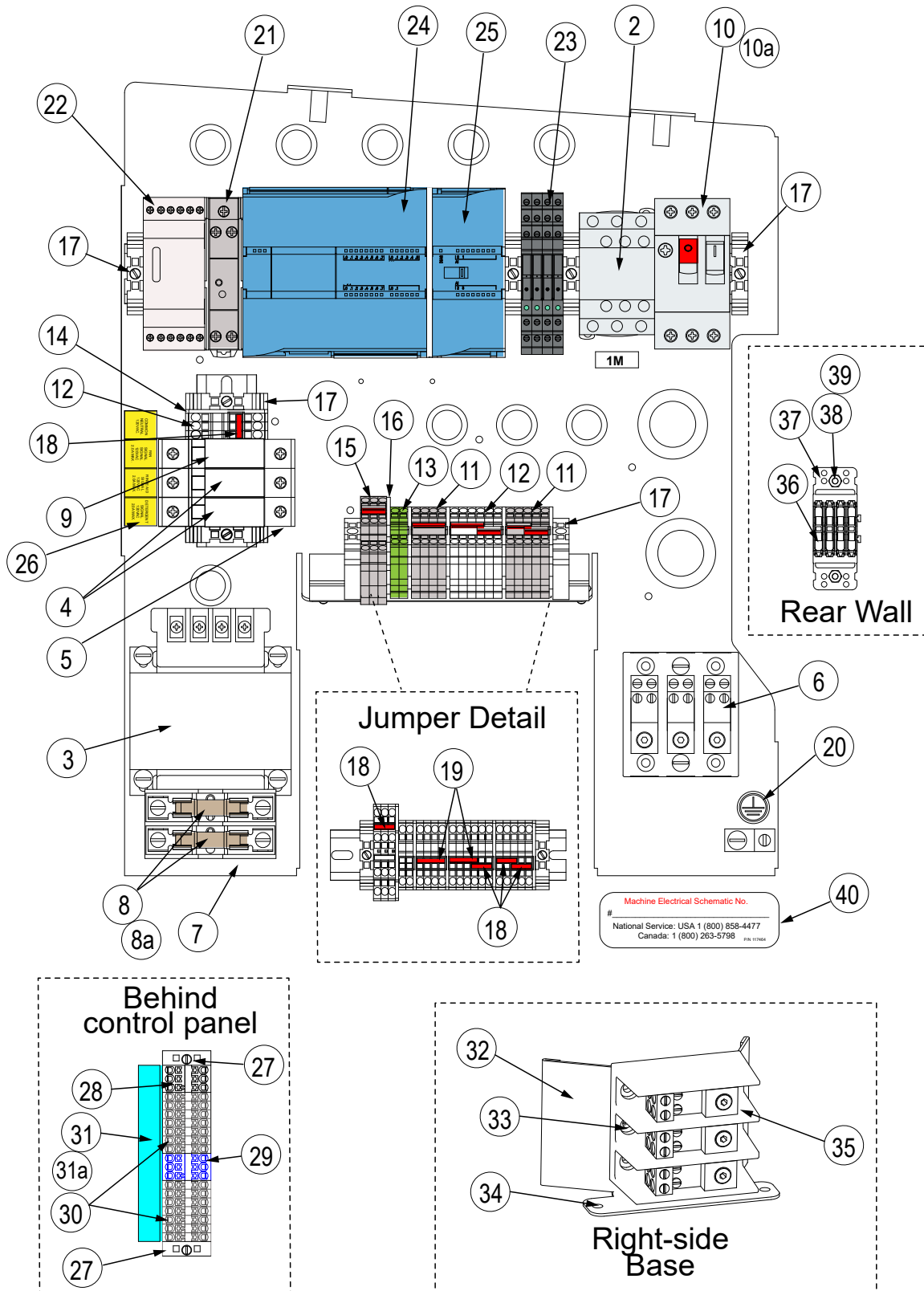
Back Support and Guides - DH6000



Back Support and Guides - DH6000

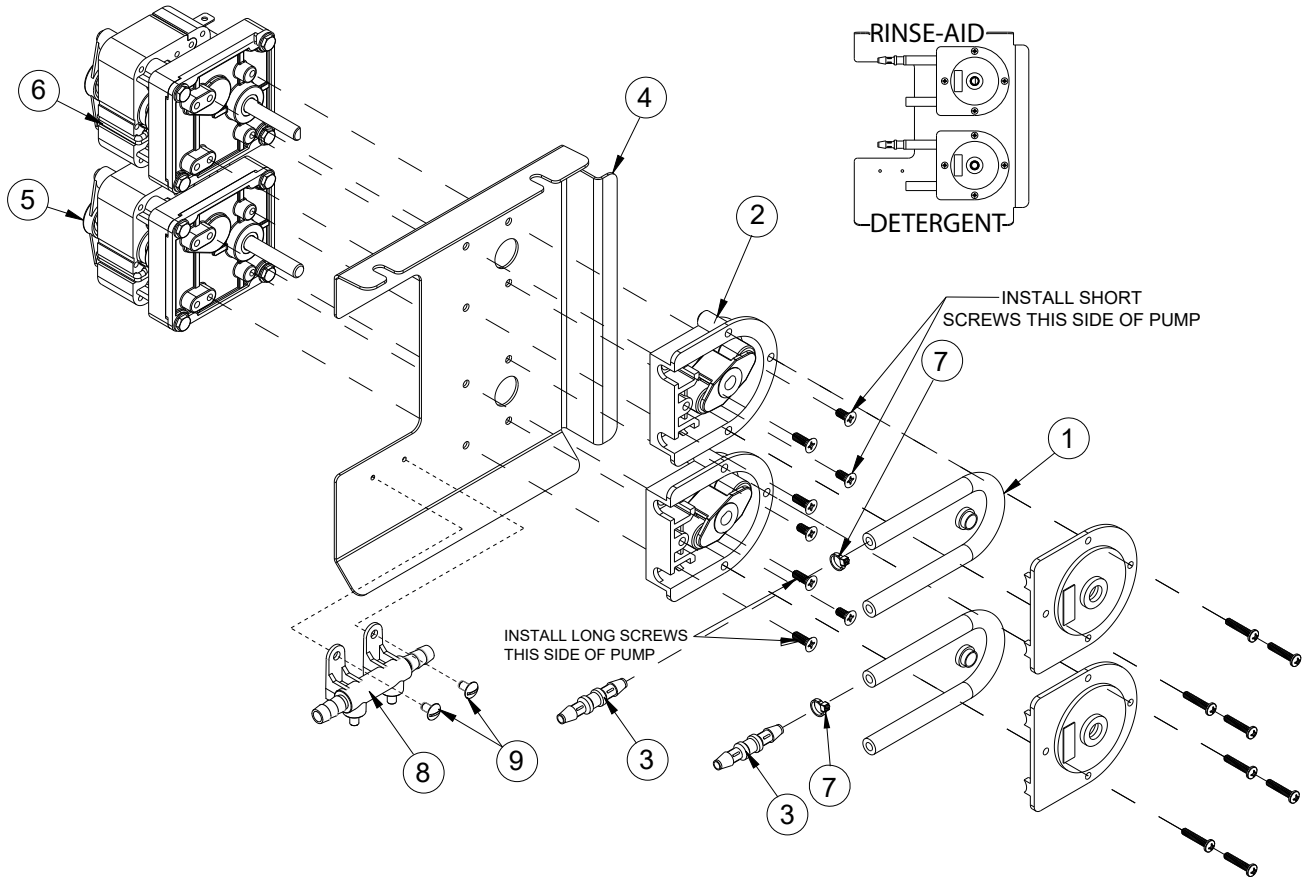
Item No.	Part No.	Description	Qty.
1	100736	BOLT, HEX HEAD, 1/4-20 X 3/4" SST	6
2	106026	WASHER, FLAT 1/4" SST	12
3	106482	WASHER, LOCK 1/4" SPLIT, SST	4
4	107967	GRIP NUT, 1/4-20 SST W/NYLON INSERT	6
5	117012	SCREW, FILLISTER HEAD, 1/4-20 X 1" SST	12
6	116425	HOOD, GUIDE STATIONARY	2
7	116773	GUIDE, DOOR DH6000	2
8	207315	GASKET, 20-1/4" LG X 3/4" WD PORON 1/8" THK.	1
9	207316	GASKET, 5-1/4" LG X 3/4" WD PORON 1/8" THK.	2
10	340575	VERTICAL HOOD SUPPORT, LH	1
11	338410	BAFFLE, DEFLECTOR HOOD	2
12	334576	VERTICAL HOOD SUPPORT, RH	1
13	338431	BACK SUPPORT, WELDMENT	1
14	339587	TOP, HOOD	1

Control Panel



Item No.	Part No.	Description	Qty.
1	103310	LUG, GROUND WIRE	1
2	108122	CONTACTOR, 12A, 3-POLE	1
3	109064	XFRMR, INPUT 250VA, 240.480/230/460: 110-120V	1
4	111115	FUSE, ATMR-2, 2A ONE-TIME	2
5	111153	FUSE HOLDER ASSY.	3
6	111833	INPUT TERMINAL BLOCK, 175A, 3-POLE	1
7	112424	FUSE BLOCK, KIT, 2-POLE	1
8	112482	FUSE, ATDR, 3.5A, LPCC-3.5 600V (208-240V/60/1&3)	2
8a	112484	FUSE, ATDR, 1.5A, LPCC-1.5 600V (480V/60/3)	2
9	112901	FUSE, ATDR, 1A, TIME DELAY	1
10	113161	MOTOR STARTER, 9.0-14.0A (208-240V/60/1&3)	1
10a	111627	MOTOR STARTER, 2.5-4.0A (480V/60/3)	1
11	114512	TERMINAL SINGLE, PT 2.5, GRAY	9
12	114514	TERMINAL SINGLE, PT 2.5, WHITE	9
13	114515	TERMINAL SINGLE, GROUND, GREEN PT 2.5 PE	2
14	114516	END COVER, SIGNAL TERMINAL D-ST 2.5	5
15	114517	TERMINAL DOUBLE, STTB 2.5	3
16	114518	END COVER, DOUBLE TERMINAL D-PTTB 2.5	1
17	114519	END BLOCK, E/NS 35N	8
18	114524	BRIDGE, 3-POLE FBS 3-5	6
19	114823	BRIDGE, 4-POLE FBS 4-5	2
20	115098	LABEL, GROUND, GREEN 3/4"	1
21	115607	SLIM 24VDC, 30W, POWER SUPPLY, PSSR-VC24	1
22	117243	DETERGENT SIGNAL CONDITIONER, DC VERSION	1
23	117423	SLIM RELAY, 6A, 110VAC/DC	4
24	117446	PLC, SIEMANS S7-1214C "Needs Programming"	1
25	117447	RTD TEMPERATURE MODULE, 4CH, SIEMENS SM 1231	1
26	117470	LABEL, FAN/RINSE/DET CONNECTIONS	1
27	117515	TERMINAL STRIP END BLOCK, PTFIX-F	2
28	117516	TERMINAL STRIP, 6PT BRIDGED WHITE, PTFIX 6 X 2.5 WH	1
29	117517	TERMINAL STRIP, 6PT BRIDGED BLUE, PTFIX 6 X 2.5 BU	1
30	117518	TERMINAL STRIP, 2PT GRAY, PTFIX 2 X 2.5 GY	14
31	117545	LABEL, TERMINAL STRIP, BLUE (<i>For mechanical DWT</i>)	1
31a	117663	LABEL, TERMINAL STRIP, BLUE (<i>For Electric DWT/Drain Pump</i>)	1
32	340539	BRACKET, 2-POINT, INCOMING ELECTRICAL COMPONENTS	1
33	100007	SCREW, TRUSS HD, 10-32" X 3/8" SST	2
34	107136	BOLT, 10-32 X 38" HEX HEAD, SST	2
35	111833	INPUT TERMINAL BLOCK, 175A 3-POLE	2
36	117525	INLINE SPLICE, 2-CONDUCTOR	4
37	117559	MOUNT CARRIER, INLINE SPLICE TERMINAL	1
38	108954	HEX GRIP NUT, 6-32 SST W/NYLON INSERT	2
39	106382	SCREW, TRUSS HEAD 6-32 X 3/8" SST	2
40	117464	LABEL, ELECTRICAL SCHEMATIC NO.	1

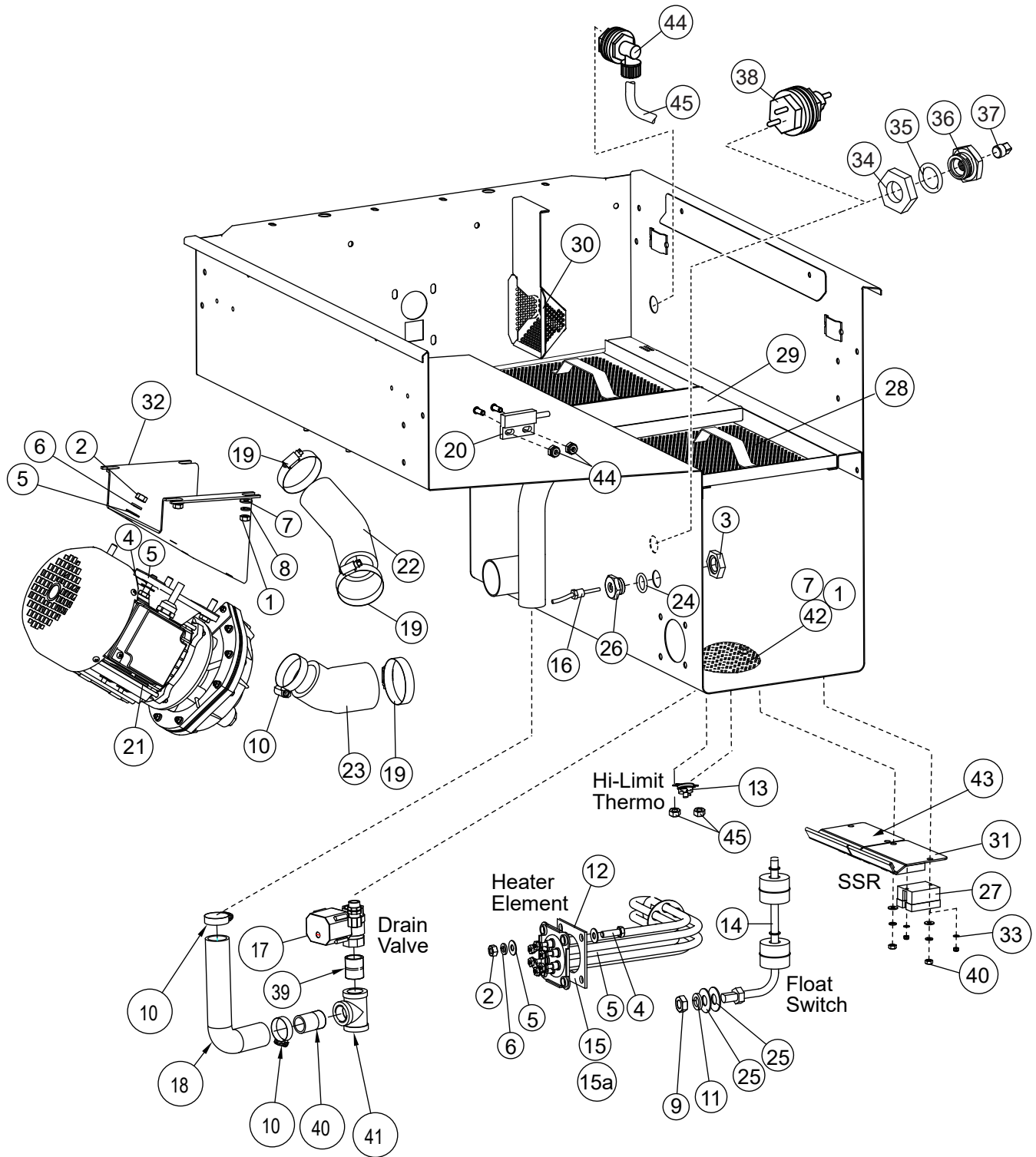
Chemical Dispensing Pumps



Chemical Dispensing Pumps

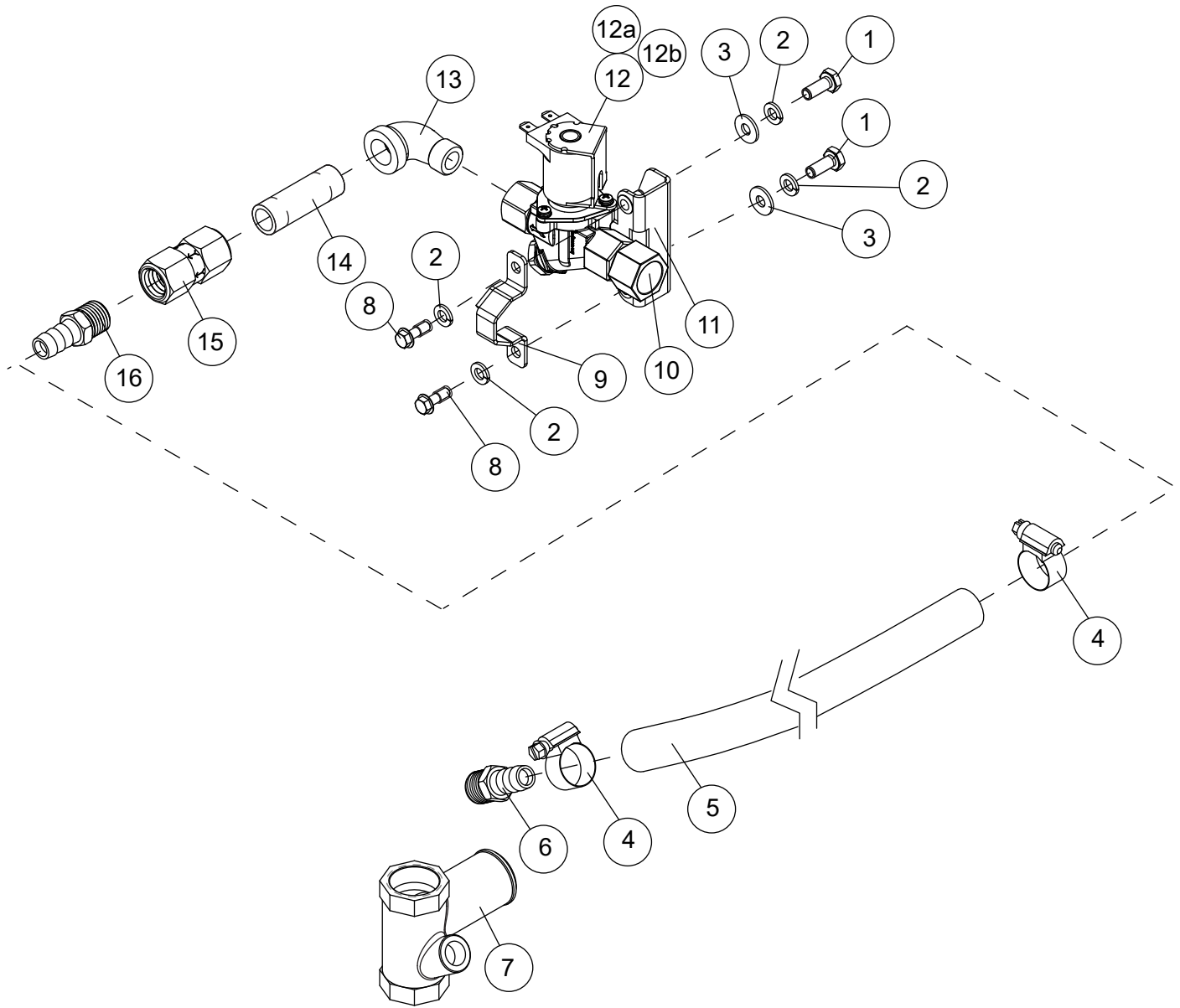
Item No.	Part No.	Description	Qty.
1	114202	TUBE, SANTOPRENE, TPE60N 3/16" X 3/8" X 9" LG.	2
2	114203	HEAD, PUMP PERISTALTIC ASSY. KIT, WITH ROLLERS	2
3	116979	HOSE BARB, 1/4" TO 1/4" POLYETHYLENE	2
4	340523	BRACKET, TWIN DETERGENT PUMP MOUNT	1
5	0510870-1	GEARMOTOR, 108 RPM, 115VAC DETERGENT 220 ML/MIN	1
6	0510872-1	GEARMOTOR, 14 RPM, 115VAC, RINSE-AID	1
7	114566	CABLE TIE, MINIATURE, 7"	2
8	117011	SENSOR, INLINE	1
9	106460	SCREW, 6-32 X 1/4", TRUSS HEAD SST	2

Wash Tank



Item No.	Part No.	Description	Qty.
1	100003	NUT, PLAIN 1/4-20 SST	7
2	100154	NUT, PLAIN 5/16" SST	8
3	100547	LOCKNUT, 1/2" NPT SST FORGED	2
4	100740	BOLT, HEX HEAD 5/16-18 X 1" SST	8
5	102376	WASHER, FLAT 5/16" SST	16
6	106013	WASHER, LOCK 5/16" SPLIT SST	8
7	106026	WASHER, FLAT 1/4" SST	7
8	106482	WASHER, LOCK 1/4" SPLIT SST	7
9	107089	NUT, JAM 1/2-13 SST	1
10	107340	CLAMP, HOSE M28 W/CS SCREW	3
11	107589	WASHER, LOCK 1/2" SPLIT SST	1
12	108345	GASKET, HEATER, 3" X 3" X 1/8"- 2-HOLE	1
13	113604	THERMOSTAT FIXED HIGH LIMIT, SNAP, 212°F	1
14	113291	FLOAT SWITCH	1
15	114178	HEATER, 5.2KW 208-240/1-3 90° TANK	1
15a	114179	HEATER, 5.2KW, 480V/60/3 90° TANK	1
16	117454	RTD TEMPERATURE SENSOR	1
17	117659	VALVE, ELECTRIC DRAIN, NC, 115VAC, W/COVER	1
18	117298	HOSE, OVERFLOW, 90°	1
19	114720	CLAMP, HOSE M36 W/CS SCREW	5
20	113721	SWITCH, DOOR SAFETY	1
21	115143	1HP PUMP/2HP MOTOR ASSY (SEE PAGE 3 FOR OTHERS)	1
22	117215	HOSE, PUMP DISCHARGE	1
23	117216	HOSE, PUMP SUCTION	1
24	115489	O-RING	2
25	115490	WASHER, FLAT	2
26	108954	GRIP NUT, 6-32 SST W/NYLON INSERT	8
27	115648	RELAY, SOLID STATE, 90A	4
28	305164	SCREEN, WELDMENT, 10-3/8"	2
29	332544	SUPPORT, FILLER SCREEN	1
30	333021	SCREEN, SUCTION	1
31	340518	PLATE, HEAT SINK	1
32	338901	BRACKET, PUMP MOUNTING	1
33	115467	WASHER	4
34	100547	LOCKNUT, 1/2" NPT, SST	1
35	107414	TUBING, HIGH DENSITY	6 FT.
36	115530	ADAPTER	1
37	100210	PLUG, 1/8" NPT, SQUARE HEAD, SST	
38	116785	PROBE, CHEMICAL P120S, KNIGHT #7005190	1
39	100694	NIPPLE, CLOSE 1" NPT SST	1
40	116431	NIPPLE TOE, 1" X 2" SST	1
41	102530	TEE, 1" NPT SST	1
42	304816	SCREEN, DRAIN 6" DIA.	1
43	110563	HEAT SINK COMPOUND	A/R
44	116780	FITTING, KNIGHT DETERGENT INJECTOR	1

Optional Electric Drain Water Tempering Assembly - Beginning with S/N D230623061

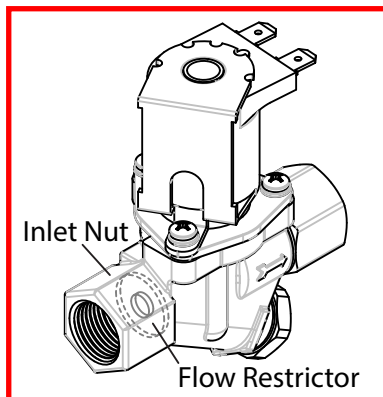


NOTE:
The mechanical DWT assembly
P/N 117084 is no longer available.

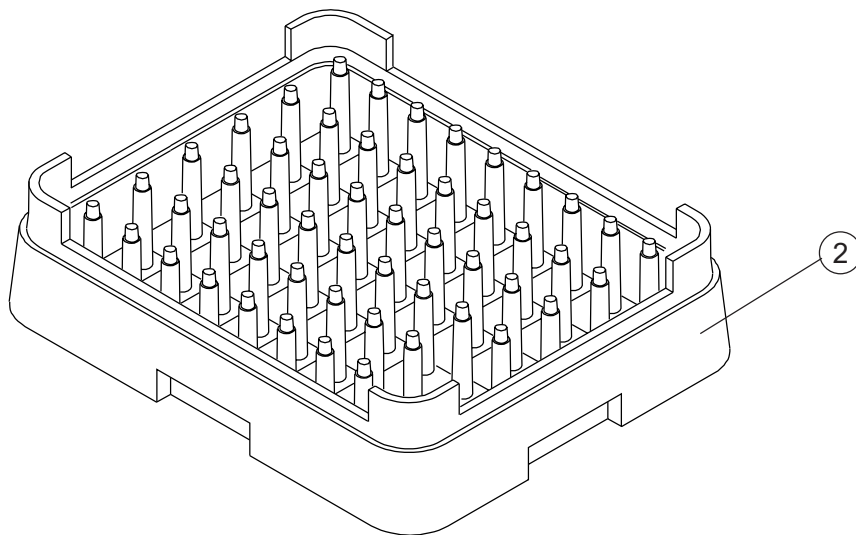
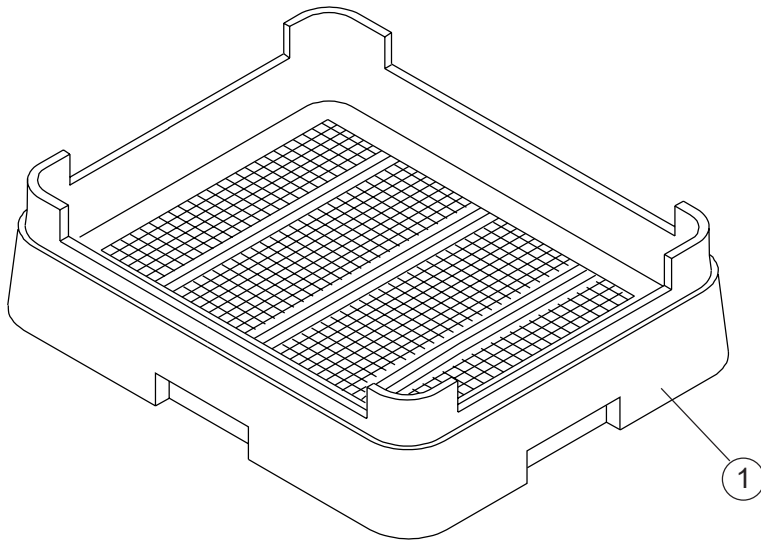
Optional Electric Drain Water Tempering Assembly - Beginning with S/N D230623061

Item No.	Part No.	Description	Qty.
1	100735	CAP SCREW, HEX HEAD, 1/4-20 X 5/8" SST	4
2	106482	WASHER, LOCK 1/4", SPLIT, SST	4
3	106062	WASHER, FLAT, 1/4", SST	2
4	105994	CLAMP, HOSE, M10, 14/27, SST GEAR-TYPE	2
5	207971	HOSE, BLUE, 1/2" ID, DWT INJECTION, DM	1
6	117597	BARB, HOSE ST, 3/8" NPT, 1/2" H SST, 304	1
7	117578	MANIFOLD, DRAIN TEMPERING	1
8	340915	CLAMP, ELEC., DWT INLET PIPING SUPPORT, DH6000/T-M2	1
9	117644	ADAPTER, 3/8" MPT X 1/2" FPT, HEX, BRASS	1
10	340910	BRACKET, ELEC., DWT, INLET PIPING, SUPPORT	1
11	0504952	VALVE, SOLENOID, W/O FLOW RESTRICTOR (SEE NOTE)	1
11a	0502811	REPAIR KIT, VALVE SOLENOID	A/R
11b	0505235	COIL, SOLENOID, 115V/60/1	A/R
12	102431	ELBOW, STREET, 3/8" X 90°, BRASS	1
13	102467	NIPPLE, 3/8" NPT X 2" LG., BRASS	1
14	0507324	VALVE, CHECK, 3/8"	1
15	112799	BARB, HOSE ST, 3/8" NPT, X 1/2" H, BRASS	1

NOTE:
REMOVE FLOW RESTRICTOR BEFORE INSTALLING
REPLACEMENT VALVE, P/N 0504952, ITEM 11.



Dish Racks



Dish Racks

Item No.	Part No.	Description	Qty.
1	101273	DISH RACK, FLAT-BOTTOM	A/R
2	101285	DISH RACK, PEG	A/R
-	114356	RACK, SHEET PAN, OPEN END, (Not Shown)	A/R