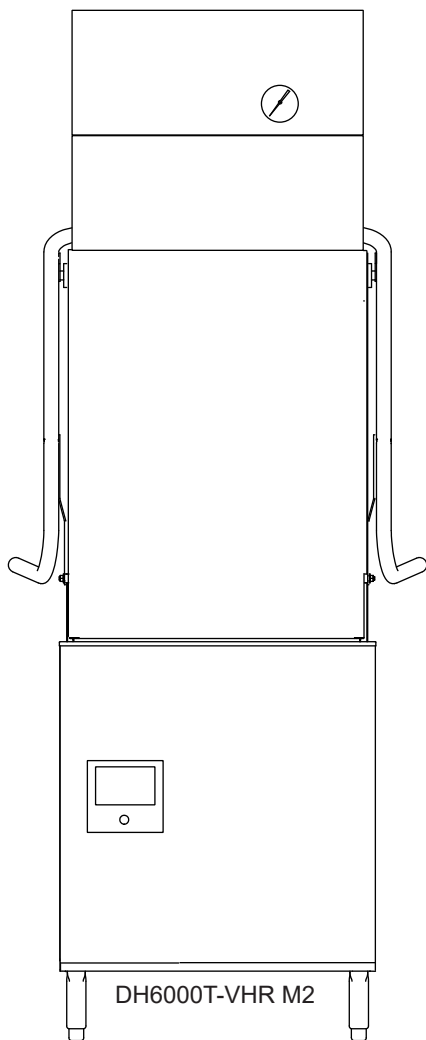


# Champion®

## Service Replacement Parts



## M2 SERIES

### Models:

**DH6000-VHR**  
**DH6000T-VHR**

Hot water sanitizing machine w/fresh  
water rinse and built-in stainless steel  
electric booster/Ventless Heat Recovery

**DH6000-STANDARD**  
**DH6000T-STANDARD**

Hot water sanitizing machine  
w/fresh water rinse and built-in  
stainless steel electric booster



[championindustries.com](http://championindustries.com)

Issue Date: 6.6.25

**Manual P/N 117472 rev. G**

For machines beginning with S/N D220421234 and above

3765 Champion Boulevard  
Winston-Salem, NC 27105  
(336) 661-1556 Fax: (336) 661-1660  
Toll-free: 1 (800) 858-4477

2674 N. Service Road, Jordan Station  
Ontario, Canada L0R 1S0  
(905) 562-4195 Fax: (905) 562-4618  
Toll-free: 1( 800) 263-5798

Printed in the USA

## NATIONAL SERVICE DEPARTMENT

### USA

Toll-free: 1 (800) 858-4477  
Tel: (336) 661-1556  
Fax: (336) 661-1660  
Email: [service@championindustries.com](mailto:service@championindustries.com)

### Canada

Toll-free: 1 (800) 263-5798  
Tel: (905) 562-4195  
Fax: (905) 562-4618  
Email: [service@moyerdiebellimited.com](mailto:service@moyerdiebellimited.com)

## ATTENTION

The machine data plate  
is located at the lower  
right corner of the front panel.



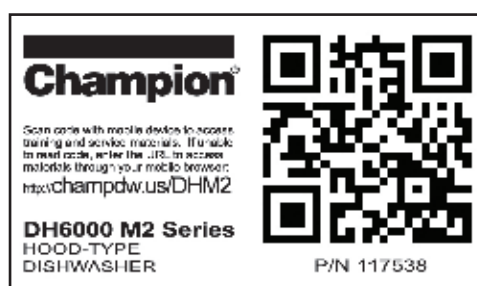
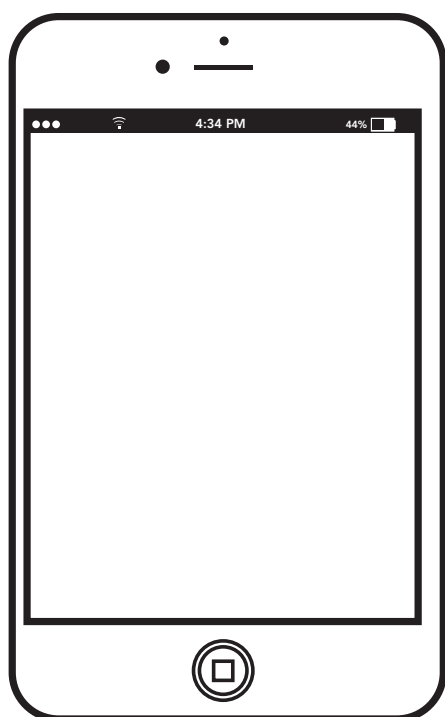
## Installation Codes

The installation of the machine must comply with all local electrical, plumbing, health, and safety codes or in the absence of local codes, installed in accordance with the applicable requirements in the National Electrical Code, NFPA 70, Canadian Electrical Code (CEC), Part 1, CSA C22.1 and the Standard for Ventilation Control and Fire Protection of Commercial Cooking Operations, NFPA 96.

### NOTE:

Only qualified personnel familiar with the installation of food service equipment should attempt the installation of this machine. Damage or problems associated with improper installation will not be covered by the limited warranty.

# Three ways to REGISTER YOUR PRODUCT.



- Enter [www.championindustries.com/warranty-registration](http://www.championindustries.com/warranty-registration) into your browser to register your product.

or

- Scan the QR code <https://champDW.DHM2> located on the lower front panel of the machine.

or

- Complete the fax form on the next page and fax to 1 (800) 661-1660.

# PRODUCT REGISTRATION BY FAX

COMPLETE THIS FORM AND FAX TO:

(905) 562-4618 in Canada  
(336) 661-1660 in the USA

## PRODUCT REGISTRATION

Model:

Serial Number:

Installation Date : \_\_\_\_/\_\_\_\_/\_\_\_\_

Company Name: \_\_\_\_\_

Address: \_\_\_\_\_  
(Street) State/Province Zip/Postal Code

Telephone: (     ) \_\_\_\_\_ --- \_\_\_\_\_

Contact: \_\_\_\_\_

Installation Company: \_\_\_\_\_

Address: \_\_\_\_\_

Telephone: \_\_\_\_\_

Contact: \_\_\_\_\_

**FAILURE TO REGISTER YOUR PRODUCT MAY VOID THE WARRANTY**

**IMPORTANT      IMPORTANT**

# Revision History

Specifications are subject to change based on continual product improvement. An owner can request a printed manual by calling 1(800) 858-4477 in the USA or 1(800) 263-5798 in Canada.

Revision Date	Revised Pages	Serial Number Effectivity	Revision Description
8.23.22	All	D220421234	Released first edition
12.14.22	38-39	D220421234	Added Item 8, inline sensor, P/N 117011
4.4.23	40-41 29 37 41	D230322622 All D230322622 D230322622	Revised tank probe fittings Added Item 25a, P/N 338433-S, service hood Added Item 31a, Label P/N 117663 Changed Item 17, Drain Valve to P/N 117659
7.5.23	42	D230623061	Added Optional Electric DWT assembly
7.13.23	22-23	D230623034	Added Wientek HMI beginning with S/N230623034
12.4.23	41	D230923373	Replaced Item 18, Overflow Hose, P/N 114472 with Overflow Hose, P/N 117298.
1.3.24	18-19	All	Added Item 4, P/N 117752, Anti-kink spring
1.25.24	37	All	Increased quantity of Item 23, slim relay, p/N 117423 from 4 to 5
6.6.25	42	D230623061	Corrected illustration part numbering

## Limited Warranty

# LIMITED WARRANTY

Champion Industries, Bi-Line Systems (herein referred to as ("The Companies")), 3765 Champion Blvd., Winston-Salem, North Carolina, 27105) warrants machines and parts, as set out below:

**WARRANTY OF MACHINES:** The Companies warrant all new machines of its manufacture bearing the name Champion or Bi-Line and installed within the United States to be free from defects in material and workmanship for a period of one (1) year from the date of installation or fifteen (15) months from the date of shipment by The Companies, whichever occurs first. This Limited Warranty does not cover products shipped outside of the United States. The warranty registration card must be returned to The Companies within ten (10) days after installation or registered online at [www.championindustries.com/warranty-registration](http://www.championindustries.com/warranty-registration) for the United States. If the online warranty is not sent to The Companies within fifteen (15) days, then the warranty will expire after fifteen (15) months from the date of shipment. The Companies will not assume any responsibility for additional installation costs in any area with jurisdictional problems with local trades or unions. The Companies reserve the right to repair or replace a defective part or the entire machine, if a defect in workmanship or material is identified within the warranty period. Alternatively, The Companies may elect to accept the return of the machine for a full credit. In the event If The Companies elect to repair then the labor and work performed in connection with the warranty shall be done by The Companies' authorized service agent during regular working hours and at regular labor rates. Overtime charges are the responsibility of the equipment purchaser. Warranty travel is be covered up to fifty (50) miles from the authorized service technician's servicing office. If travel exceeds fifty (50) miles, the end user will be responsible for any additional travel expense. Service calls initiated under warranty and found not to contain any defects in materials or workmanship, will not be covered by The Companies warranty. Defective parts become the property of The Companies. Use of non-OEM replacement parts, not authorized by The Companies, will relieve The Companies of all further liability in connection with its warranty. In no event, will The Companies' warranty obligation exceed the charge for the machine. Machines that come with a factory-paid start-up will be limited to one (1) authorized service call for start-up. Installation problems or delays, of any kind, will not be covered by The Companies' warranty and will be the sole responsibility of the equipment purchaser.

### THE WARRANTY DOES NOT COVER:

- a. Chemical tubing,, O-rings, or curtains.
- b. Vacuum breakers.
- c. Adjustments to structural or mechanical components covered by recommended maintenance procedures.
- d. Replacement of fuses, resetting of overload breakers, or high-limit thermostats.
- e. Adjustments of thermostats or other temperature controlling devices.
- f. Adjustments of clutches.
- g. Adjustments of water pressure(s).
- h. Adjustments of factory chemical pumps and settings.
- i. Opening or closing of utility supply valves or switching of electrical supply current.
- j. Cleaning of valves, strainers, screens, nozzles, or spray pipes.
- k. Regular maintenance and cleaning as outlined in the operator's guide.
- l. Damages resulting from water conditions, accidents, alterations, improper use, abuse, tampering, improper installation, under or over voltage conditions, power

surges, inadequate wiring, outdoor use, or failure to follow maintenance and operation procedures.

- m. Pulper cutter blocks, pulse vanes, and auger brush due to wear and tear.
- n. Damages due to improper storage.
- o. Special installations or applications, including remote locations, are limited in coverage by this warranty.
- p. Any installation that requires additional work and/or travel to gain access to a machine for service is the sole responsibility of the equipment purchaser.

### THE FOLLOWING DEFECTS ARE NOT COVERED BY THE WARRANTY:

1. Damage to the exterior or interior finish.
2. Damage caused by improper connection to utility service other than that designated on the rating plate.
3. Inadequate or excessive water pressure.
4. Corrosion due to foreign materials, improper water supplies, improper chemicals, or chemicals dispensed in excess of recommended concentrations.
5. Failure of components due to the connection of third-party chemical dispensing equipment installed by others.
6. Leaks and damage due to the use of non-specified water quality.
7. Leaks and damage caused by the installer, including machine table connections.
8. Leaks or damage caused by chemical dispensing equipment connections installed by others.
9. Failure to comply with all local building codes.
10. Damage caused by labor dispute.

**WARRANTY OF PARTS:** The Companies warrant all new machine parts produced or authorized by The Companies to be free from defects in material and workmanship for a period of ninety (90) days from the date of invoice. If any parts defect in material and workmanship is found to exist within the warranty period, then The Companies will refund the cost of the defective part.

### DISCLAIMER OF WARRANTIES AND LIMITATIONS

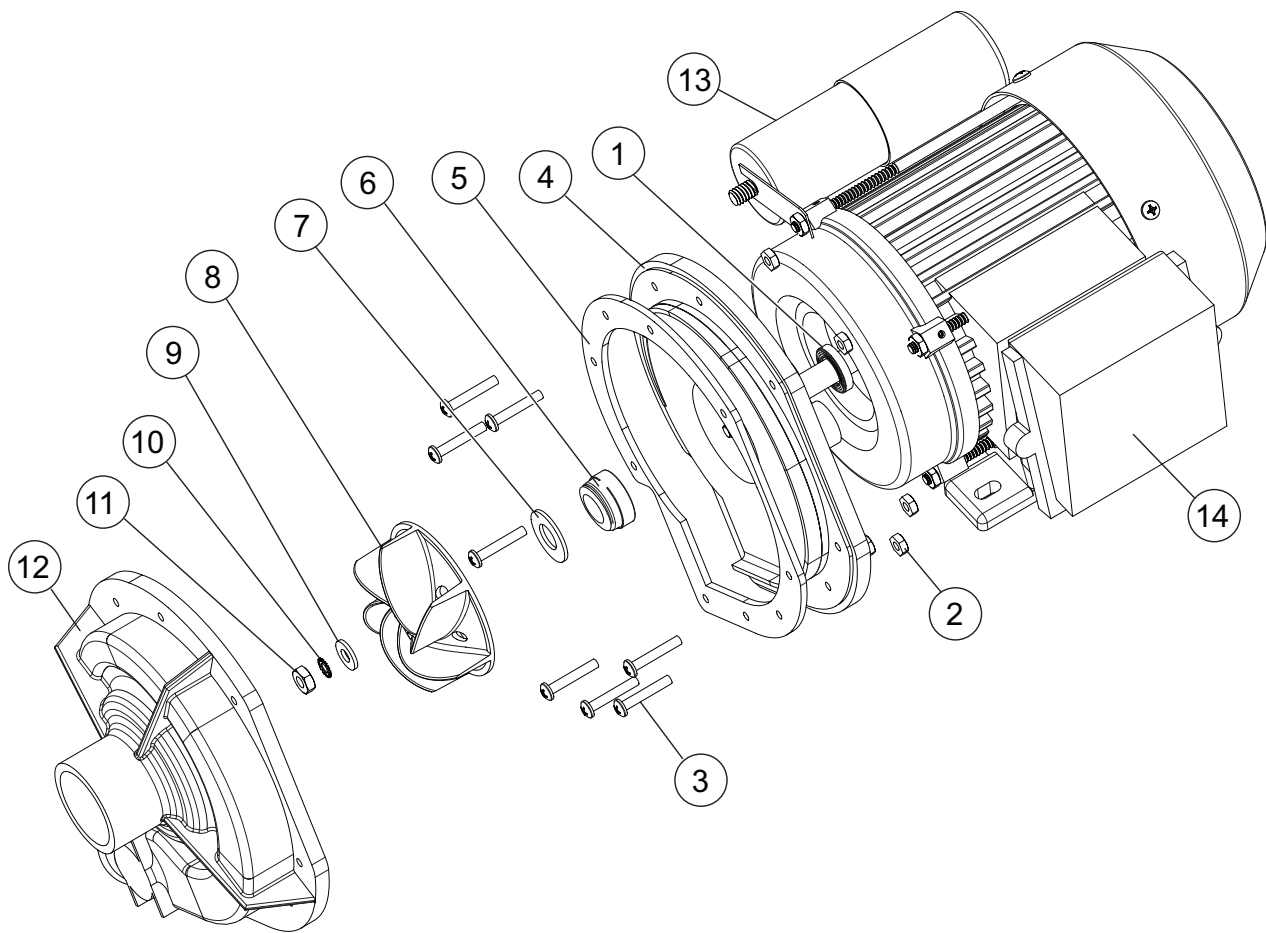
**OF LIABILITY.** THE COMPANIES' WARRANTY IS ONLY TO THE EXTENT REFLECTED ABOVE. THE COMPANIES MAKE NO OTHER WARRANTIES, EXPRESS OR IMPLIED, INCLUDING, BUT NOT LIMITED TO ANY WARRANTY OF MERCHANTABILITY OR FITNESS OF PURPOSE. THE COMPANIES SHALL NOT BE LIABLE FOR INCIDENTAL OR CONSEQUENTIAL DAMAGES. THE REMEDIES SET OUT ABOVE ARE THE EXCLUSIVE REMEDIES FOR ANY DEFECTS FOUND TO EXIST IN MACHINES AND PARTS OF THE COMPANIES. ALL OTHER REMEDIES ARE EXCLUDED, INCLUDING ANY LIABILITY FOR INCIDENTALS OR CONSEQUENTIAL DAMAGES.

*Champion Industries or Bi-Line Systems does not authorize any other person, including persons who deal in Champion Industries or Bi-Line Systems machines, to change this warranty or create any other obligation in connection with Champion Industries or Bi-Line Systems machines.*

# Service Replacement Parts

ILLUSTRATION	PAGE
Wash Pump/Motor .....	2
Booster .....	4
Heat Recovery Coil.....	6
Heat Recovery Cover .....	8
Fill Piping .....	10
Rinse Manifold.....	12
Wash Manifold - DH6000T .....	14
Wash Manifold - DH6000 .....	16
Hoses .....	18
Spray Arms .....	20
Panels and HMI .....	22
Dish Rack Tracks.....	24
Hood and Handle - DH6000T .....	26
Hood and Handle - DH6000 .....	28
Door Lock .....	30
Back Support and Guides - DH6000T .....	32
Bask Support and Guides - DH6000 .....	34
Control Panel.....	36
Chemical Dispensing Pumps.....	38
Wash Tank .....	40
Dish Racks .....	42

## Wash Pump/Motor

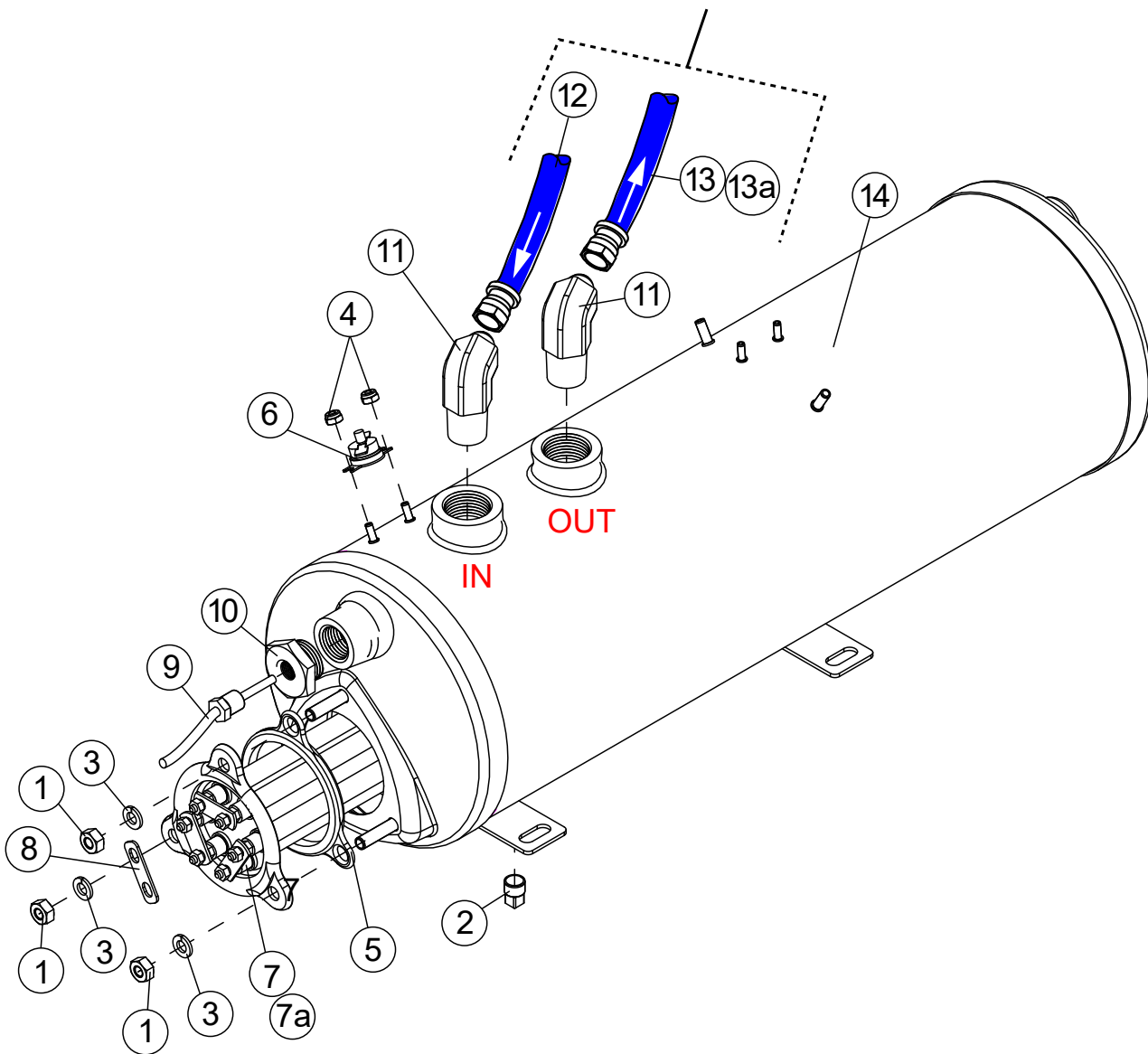




Item No.	Part No.	Description	Qty.
1	114134	SLINGER, WATER	1
2	107337	NUT, PLAIN M4	9
3	0512340	SCREW, M4 X 0.70 30 mm PHILLIPS PAN HEAD	9
4	114137	PLATE, BACKING, C/W CAPACITOR BRKT.	1
5	110285	GASKET, PUMP	1
6	114139	SEAL, PUMP	1
7	114140	WASHER	1
8	114141	IMPELLER	1
9	114142	WASHER	1
10	114143	WASHER, LOCK	1
11	114144	NUT, IMPELLER (LH THREADS)	1
12	114145	HOUSING, PUMP	1
13	112637	CAPACITOR 31.5 $\mu$ F	1
14	115143	1HP PUMP/2HP MOTOR ASSEMBLY COMPLETE 208-240VAC/60/1PH	A/R
---	115144	1HP PUMP/2HP MOTOR ASSEMBLY COMPLETE 208-266/360-460VAC/60/3PH	A/R
--	115429	1HP PUMP/2HP MOTOR ASSEMBLY COMPLETE 230V/50/1PH (For 380-415V/50/3 machines)	A/R

**THE MOTOR CANNOT BE ORDERED SEPARATELY.**

See pages 18-19 for VHR hoses.  
Items 12, 13, & 13a below are NON-VHR hoses.

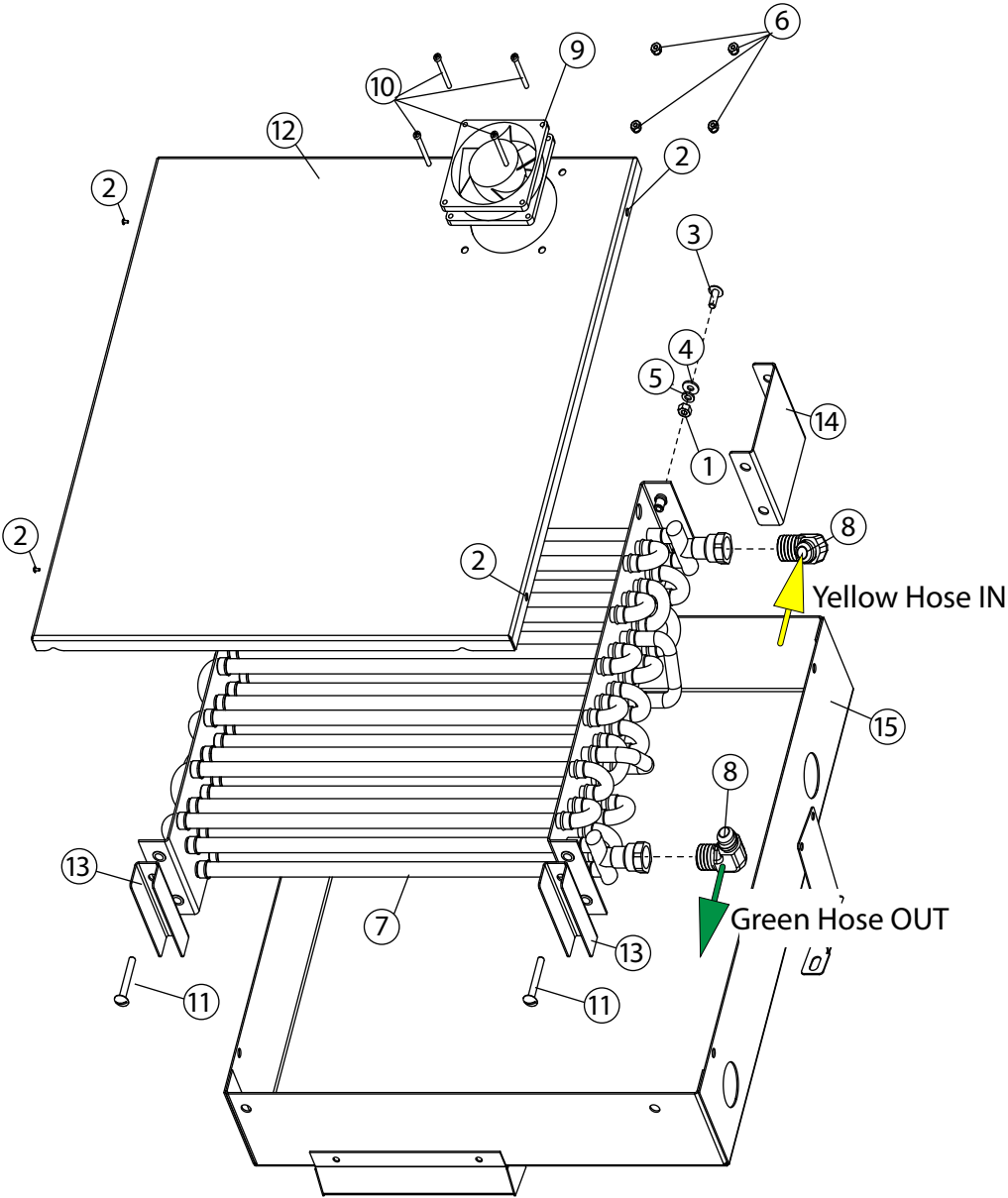


Item No.	Part No.	Description	Qty.
1	100003	NUT, PLAIN, 1/4-20 SST	6
2	100210	PLUG, 1/8" NPT SQ. HEAD, SST	1
3	106482	WASHER, LOCK 1/4" SPLIT SST	6
4	108954	NUT, GRIP, 6-32 W/NYLON INSERT SST	2
5	109985	SEAL, ELECTRIC HEATER FLANGE	1
6	113604	THERMOSTAT, FIXED, SNAP, 212°F	1
7	111233	HEATER, 7.5KW, 208-240V/60/1PH & 3PH	1
7a	108579	HEATER, 9KW, 480V/60/3PH	1
8	111488	JUMPER, STRIP HEATER (Same as 0508960)	1
9	117454	RTD TEMPERATURE SENSOR, 100Ω, 1" PROBE	1
10	115530	ADAPTER, THERMOMETER DIGITAL (Alt to 0512299)	1
11	117040	ELBOW , MALE 3/4 NPT, X 5/8" 37° FLARE JIC, BRASS	2
12*	421823	HOSE ASSY, 19" LG., INLET SUPPLY TO BOOSTER	1
13*	421018	HOSE, DH6000, BOOSTER TO MANIFOLD, BLUE	1
13a*	421004	HOSE, DH6000T, BOOSTER TO MANIFOLD, BLUE	1
14	0509042	BOOSTER TANK, WELDED ASSEMBLY	1

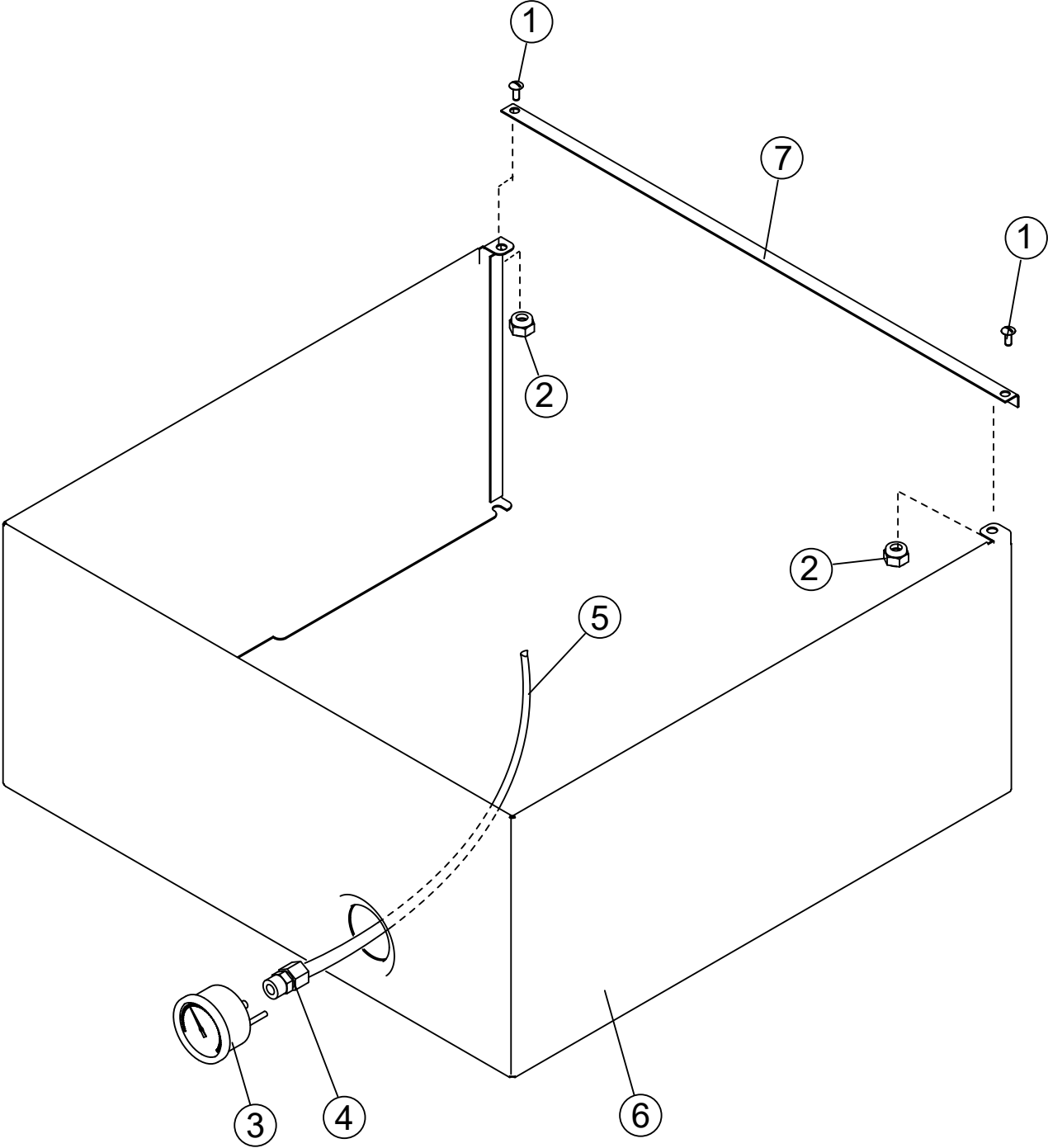
\* Items 12, 13, & 13a for NON-VHR machines. See pages 18-19 for VHR hoses.

See pages 14-17 for final rinse hoses for NON-VHR and VHR hoses.

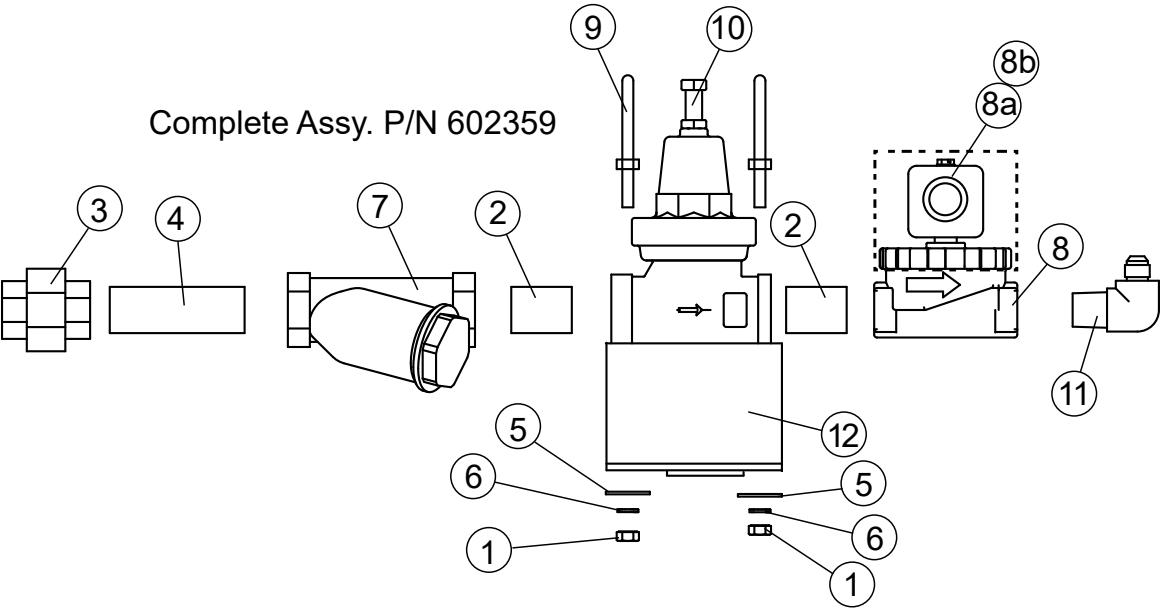
Heat Recovery Coil



Item No.	Part No.	Description	Qty.
1	100003	NUT, HEX PLAIN, 1/4-20 SST	2
2	100007	SCREW, TRUSS HD., 10-32" X 3/8" SST	4
3	100779	SCREW, TRUSS HD., 1/4-20 X 5/8" TRUSS HEAD SST	4
4	106026	WASHER, FLAT, 1/4"	2
5	106482	WASHER, LOCK 1/4 SPLIT SST	2
6	107965	NUT, GRIP 8-32 SST W/NYLON INSERT	4
7	114931	COIL, BATTERY, CONDENSATE REMOVAL	1
8	115100	ELBOW, MALE 1/2 NPT X 1/2", 37° FLARE JIC	2
9	116783	FAN, NMB 24VDC, 92MM X 92MM, 91.8 CFM	1
10	116805	SCREW, FILISTER HEAD, 8-32 X 1-1/2" SST	4
11	117013	SCREW, TRUSS HEAD 1/4-20 X 1-3/4" SST	2
12	338679	COVER, TOP COIL	1
13	338764	COIL SPACER, SHORT	2
14	338765	COIL SPACER, LONG	2
15	339276	BOX, COIL WELDMENT	1
---	338730	BEAUTY PANEL, TOP (NOT SHOWN)	1
---	116688	BUSHING, SNAP-IN SMOOTH BORE 1/2" DIA. (NOT SHOWN)	1
---	338791	PANEL, BEAUTY, REAR CROSS BAR ASSY. (NOT SHOWN)	1



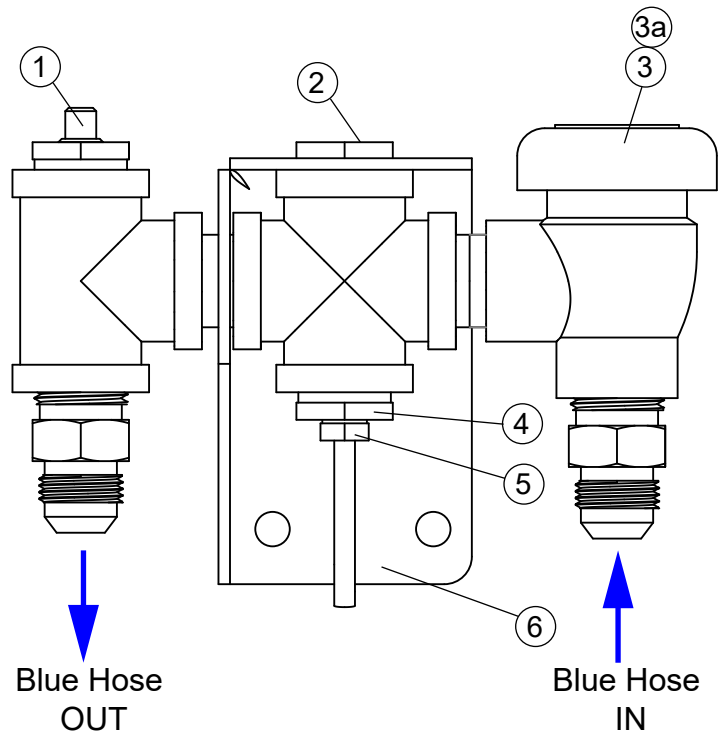
Item No.	Part No.	Description	Qty.
1	100097	SCREW, TRUSS HEAD, 10-32 X 1/2" SST	2
2	107967	NUT, GRIP 1/4-20 W/NYLON INSERT SST	6
3	109812	GAUGE-PRESSURE, 0-60 PSI, PANEL	1
4	117007	ADAPTER, 1/4" O.D. X 1/4" MPT PLASTIC, ENDRIES	1
5	107414	TUBING, HIGH DENSITY	8FT.
6	338730	DH6000T, VHR, TOP BEAUTY PANEL	1
7	338790	DH6000T, VHR, BEAUTY PANEL, REAR CROSS BAR	1





Item No.	Part No.	Description	Qty.
1	100003	NUT, HEX PLAIN, 1/4-20 SST	4
2	100184	NIPPLE, 3/4" NPT X CLOSE BRASS	2
3	100571	UNION, 3/4" NPT BRASS	1
4	102653	NIPPLE, 3/4" X 4" LG., BRASS	1
5	104925	WASHER, FLAT 1/4"	4
6	106482	WASHER, LOCK 1/4" SPLIT SST	4
7	110768	STRAINER, LINE 3/4" NPT BRONZE FEMALE	1
8	111437	VALVE, SOLENOID, 3/4" NPT HW	1
8a	114839	KIT, REPAIR, VALVE 3/4" HW	A/R
8b	111472	COIL, SOLENOID 3/4" 120VAC	A/R
9	115169	U-BOLT, 1/4-20 X 1-3/8" L THD., X 1-1/2" OD	2
10	116945	VALVE, PRV 25-75 PSI 3/4" NPT	1
11	117040	ELBOW, MALE 3/4" NPT X 5/8" 37° FLARE JIC BRASS	1
12	340542	BRACKET, INLET PLUMBING SUPPLY	1

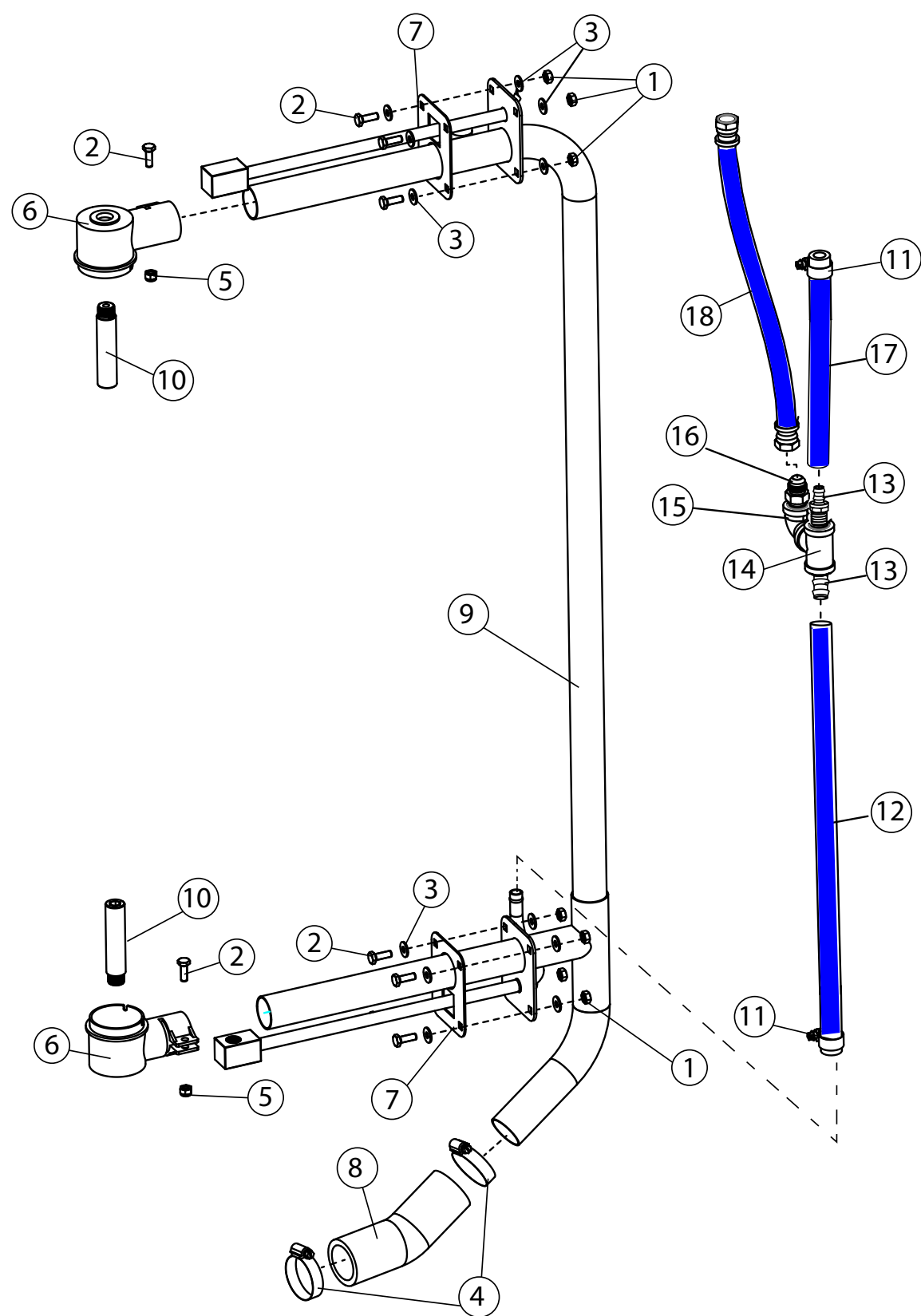
Rinse Manifold



<p>INJECTOR, RINSE AID P/N 116966</p> <p>GAUGE, PRESSURE, 0-60 PSI P/N 100135</p>	<p>INJECTOR, RINSE AID P/N 116966</p> <p>ELBOW, 1/4" OD TUBE X 1/4" MPT PLASTIC TUBE FITTING, P/N 116989</p>
<p>PLUG, 1/8" NPT P/N 100210</p>	<p>GAUGE, PRESSURE, 0-60 PSI P/N 100135</p>

Item No.	Part No.	Description	Qty.
1	100210	PLUG, 1/8" SQ. HEAD SST	1
2	102388	BUSHING, REDUCING 1/2" NPT X 1/4" NPT BRASS	1
3	100500	BREAKER, VACUUM 1/2" BRONZE	1
3a	900836	KIT, REPAIR, VACUUM BREAKER	A/R
4	114717	BUSHING, REDUCING 1/2" NPT X 1/8" NPT SST	1
5	117454	RTD TEMPERATURE SENSOR, 100Ω, 1" PROBE	1
6	339057	BRACKET, RINSE PLUMBING	1

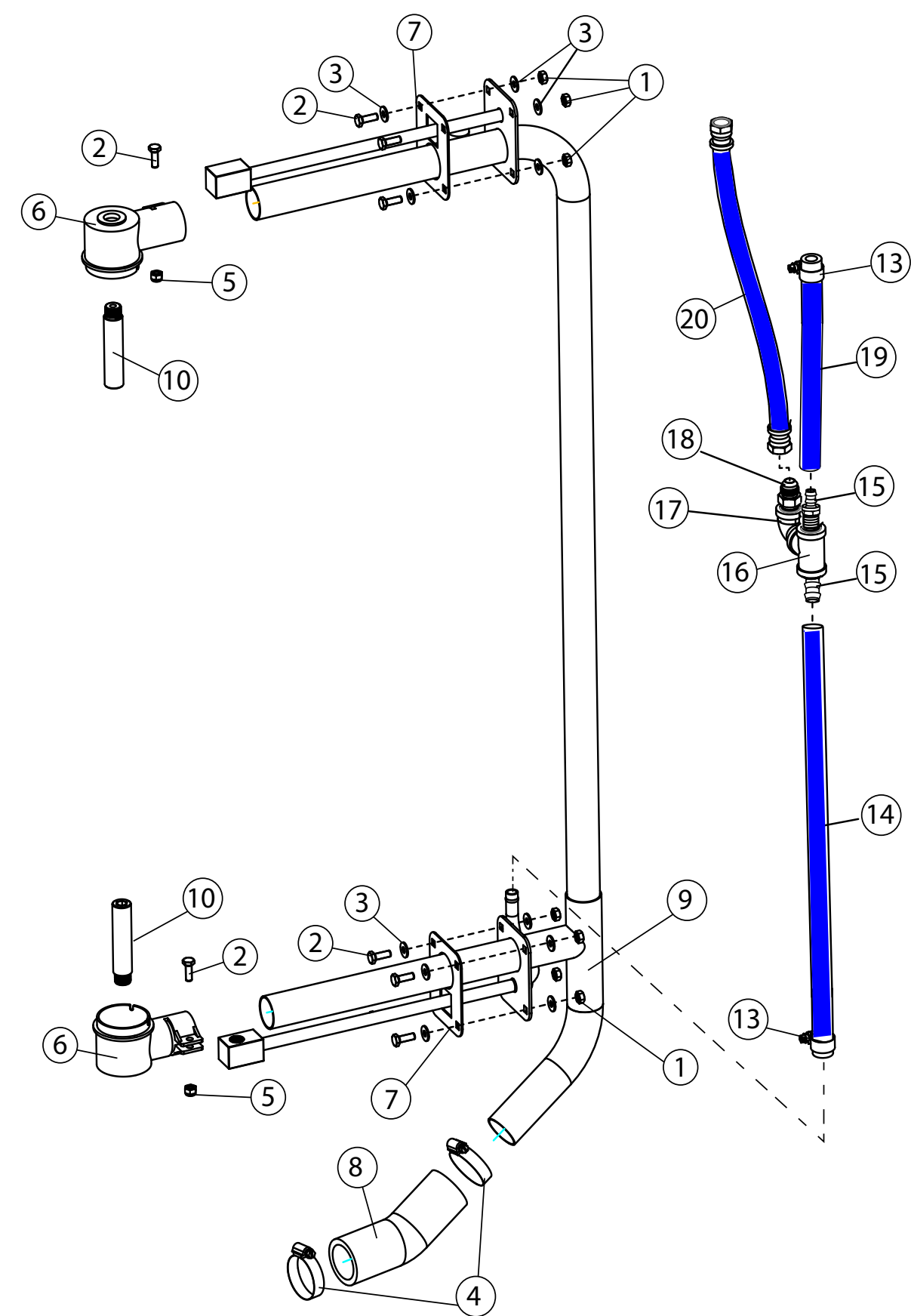
Wash Manifold - DH6000T (Non-VHR and VHR)



**Wash Manifold - DH6000T (Non-VHR and VHR)**

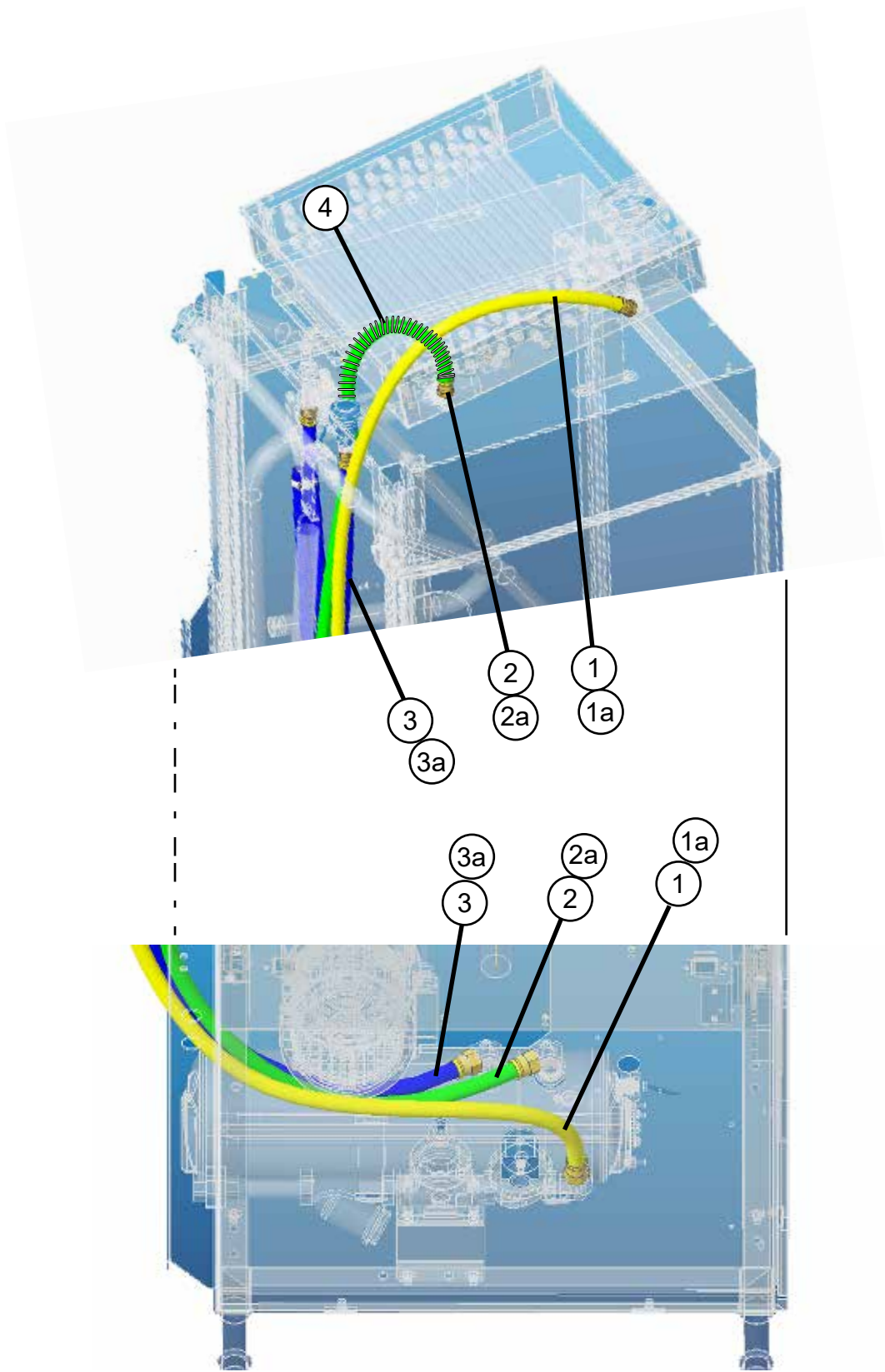
<b>Item No.</b>	<b>Part No.</b>	<b>Description</b>	<b>Qty.</b>
1	107967	NUT GRIP, 1/4-20 W NYLON INSERT SST	8
2	100736	BOLT, 1/4-20 X 3/4", HEX HD., SST	10
3	106026	WASHER, FLAT 1/4" SST	12
4	107340	CLAMP, HOSE M28 W/CS SCREW	2
5	107967	GRIP NUT, 1/4-20 SST W/NYLON INSERT	2
6	109864	SUPPORT, WASH ARM	2
7	116940	GASKET, STANDPIPE WASH	2
8	117215	HOSE, DISCHARGE, DH6000	1
9	338832	STANDPIPE, WELDMENT, DH6000T	1
10	0507445	SPINDLE, WASHARM	2
11	105994	CLAMP, HOSE, 1/2"-1-18" W/CS SCREW	2
12	207164-S	HOSE ASSY. 1/2" ID X 22" LG., BLUE	1
13	115142	HOSEBARB, MALE, 1/2"NPT X 1/2" HOSE, BRASS	1
14	102514	TEE, 1/2" NPT, BRASS	1
15	115101	CONNECTOR, MALE, 1/2" NPT X 1/2 "37°, FLARE JIC	1
16	102438	ELBOW, STREET, 1/2" NPT X 90° BRASS	1
17	207148-S	HOSE ASSY. 1/2" X 12" LG., BLUE	1
18	419974	HOSE ASSY. 1/2" ID X 14" LG., BLUE	1

Wash Manifold - DH6000 (Non-VHR and VHR)



**Wash Manifold - DH6000 (Non-VHR and VHR)**

<b>Item No.</b>	<b>Part No.</b>	<b>Description</b>	<b>Qty.</b>
1	107967	NUT GRIP, 1/4-20 W/NYLON INSERT SST	8
2	100736	BOLT, 1/4-20 X 3/4", HEX HD., SST	10
3	106026	WASHER, FLAT 1/4" SST	12
4	107340	CLAMP, HOSE M28 W/CS SCREW	2
5	107967	GRIP NUT, 1/4-20 SST W/NYLON INSERT	2
6	109864	SUPPORT, WASH ARM	2
7	116940	GASKET, STANDPIPE WASH	2
8	117215	HOSE, DISCHARGE, DH6000	1
9	338832	STANDPIPE, WELDMENT, DH6000T	1
10	0507445	SPINDLE, WASHARM	2
11	602093	PIPING ASSY., FINAL RINSE	1
13	105994	CLAMP, HOSE, 1/2"-1-18" W/CS SCREW	2
14	207158-S	HOSE, 1/2" ID X 16" LG., BLUE	1
15	115142	BARB, HOSE, MALE, 1/2"NPT X 1/2" HOSE, BRASS	1
16	102514	TEE, 1/2" NPT, BRASS	1
17	102438	ELBOW, STREET, 1/2" NPT X 90° BRASS	1
18	115101	CONNECTOR, MALE, 1/2" NPT X 1/2"37°, FLARE JIC	1
19	207781-S	HOSE, 1/2" ID X 9-1/2" LG., BLUE	1
20	419325	HOSE ASSY., 1/2" ID X 11" LG., FLARE JIC	1

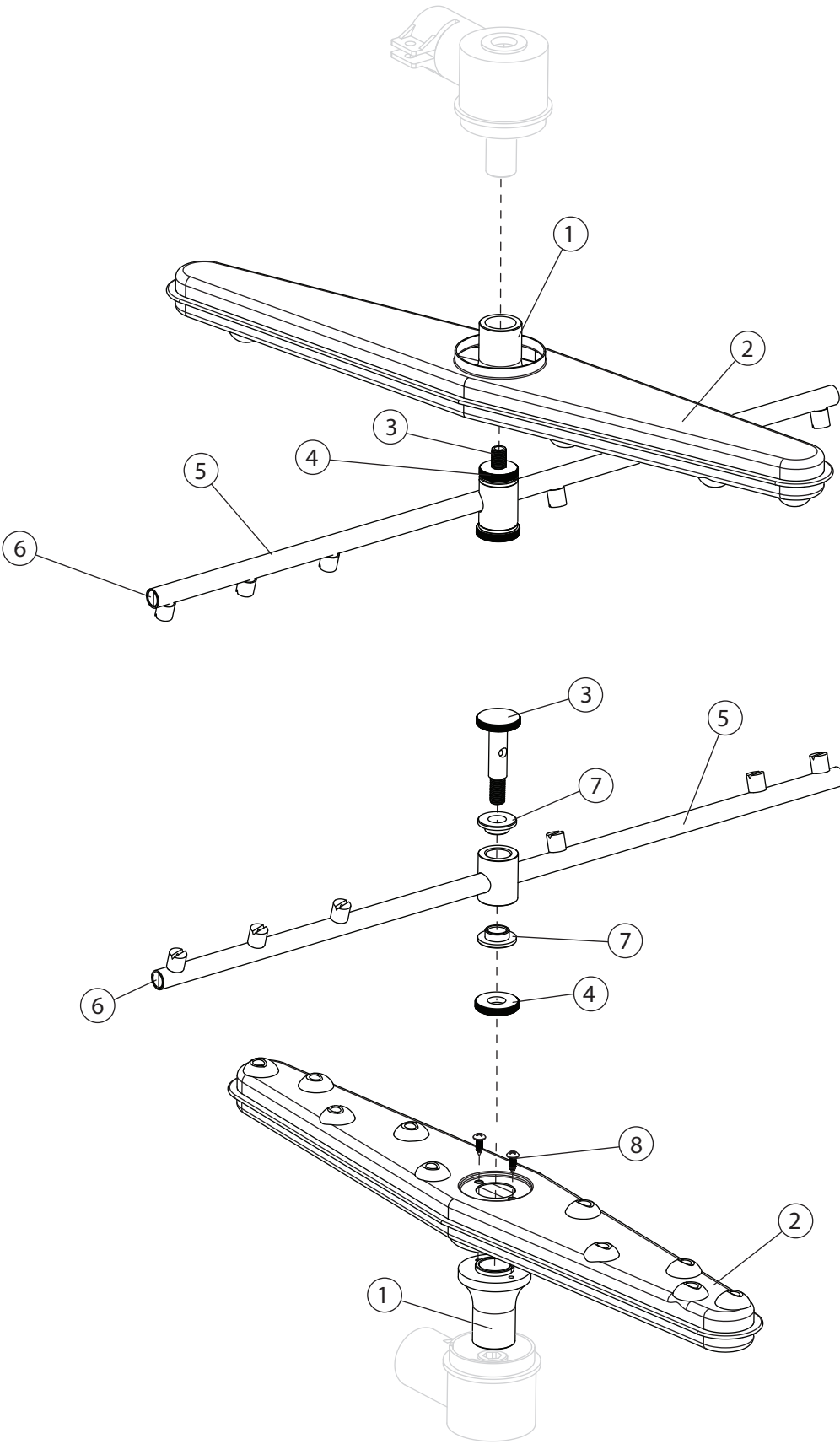




## Hoses - DH6000, DH6000T (VHR)

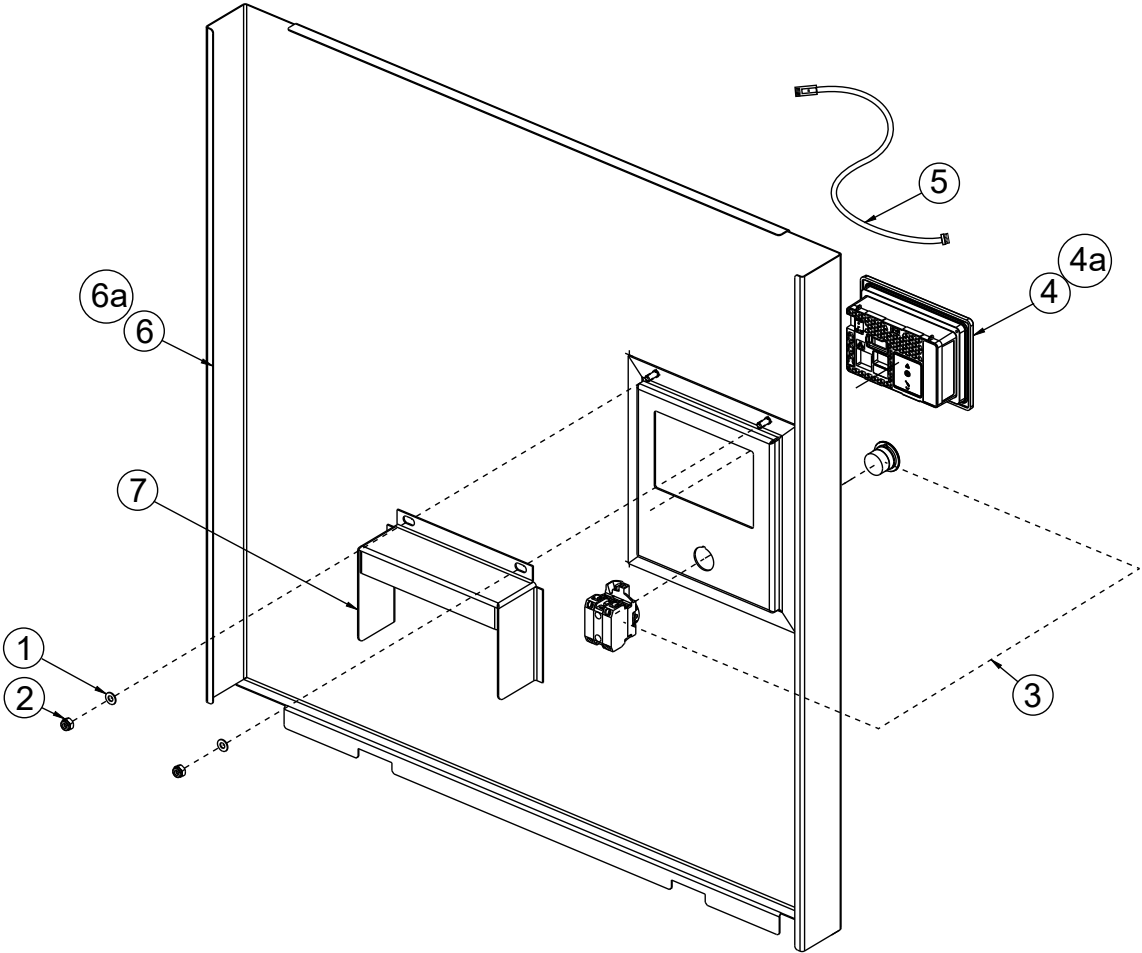
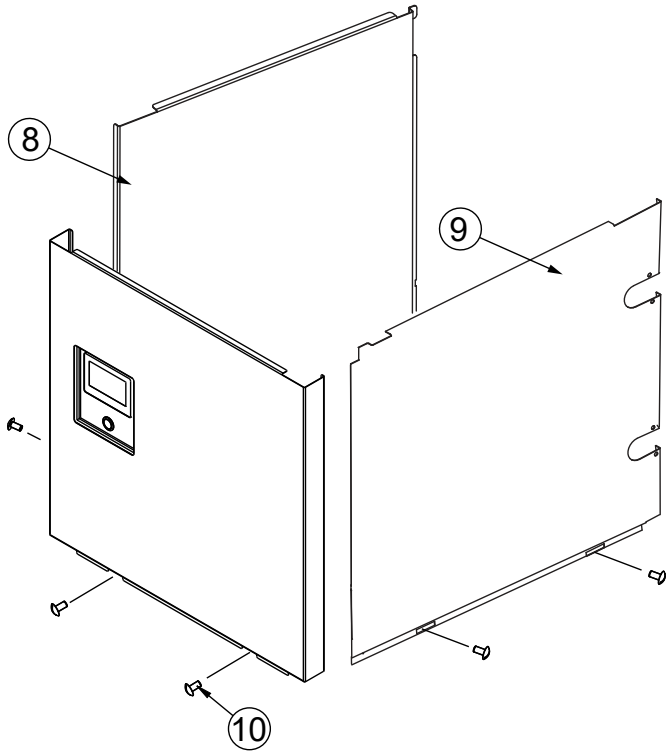
Item No.	Part No.	Description	Qty.
1	421006	DH6000T HOSE, COLD INLET TO COIL, YELLOW, VHR	1
1a	421020	DH6000 HOSE, COLD INLET TO COIL, YELLOW, VHR	1
2	421005	DH6000T HOSE, COIL INTO BOOSTER, GREEN, VHR	1
2a	421019	DH6000 HOSE, COIL INTO BOOSTER, GREEN, VHR	1
3	421004	DH6000T HOSE, BOOSTER TO MANIFOLD, BLUE	1
3a	421018	DH6000 HOSE, BOOSTER TO MANIFOLD, BLUE	1
4	117752	SPRING, ANTI-KINK, 3/4" O.D. HOSE X 12" LONG	1

Spray Arms

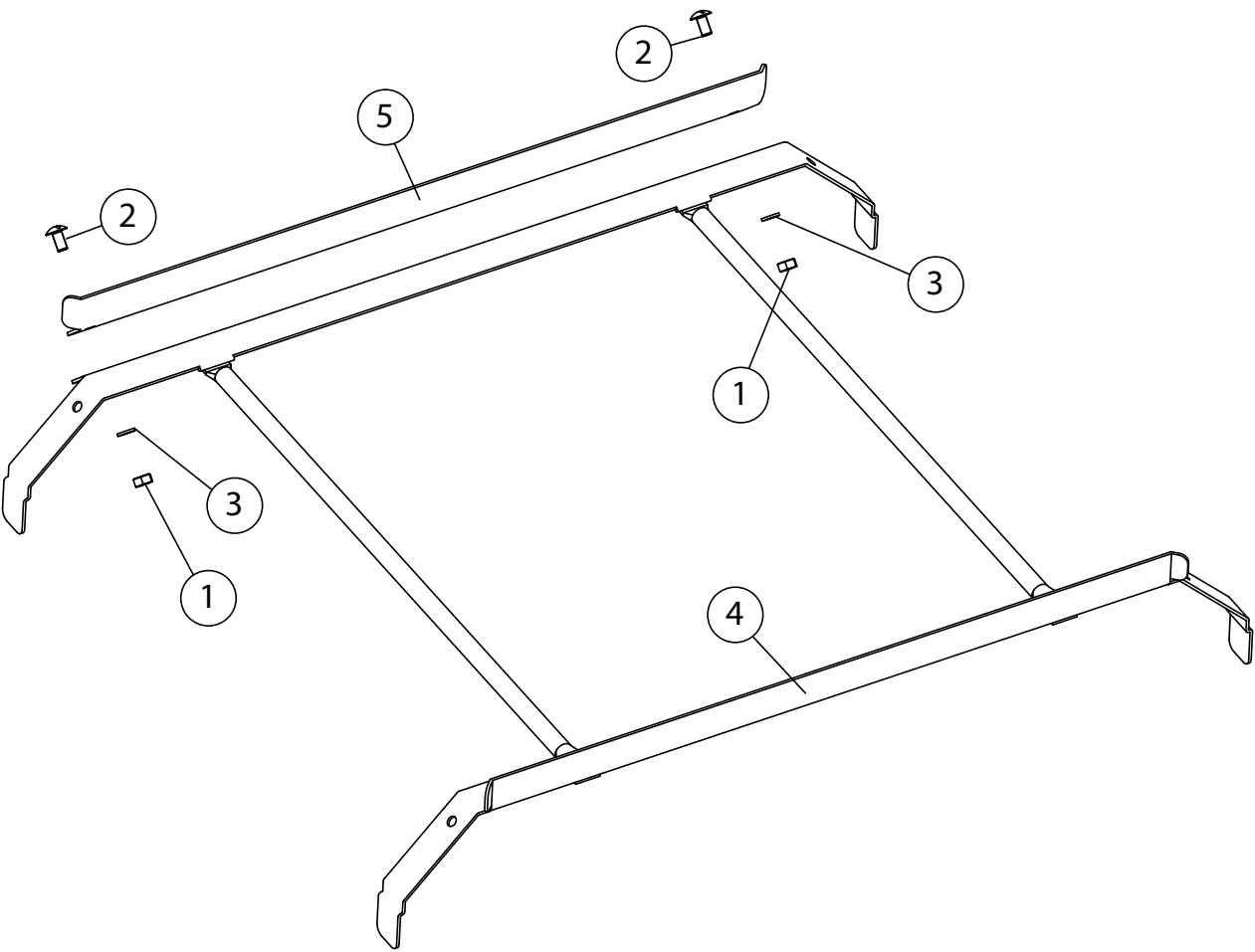


**Spray Arms**

<b>Item No.</b>	<b>Part No.</b>	<b>Description</b>	<b>Qty.</b>
1	207096	WASHARM, BEARING	2
2	114858	WASHARM, WELDMENT	2
3	0507443	SPINDLE, RINSE ARM	2
4	114556	NUT, SPINDLE	2
5	115222	RINSE ARM, WELDMENT	2
6	114861	END CAP, HEADLESS, 7/16-20 SST	6
7	113514	BEARING, RINSE ARM	4
8	109835	SCREW, #8 X 1/2" SELF-TAPPING PAN HEAD, PHILLIPS	4
---	900975	RINSE ARM ASSEMBLY, COMPLETE (INCLUDES ITEMS 5-7)	2
---	900954	WASH ARM ASSEMBLY, COMPLETE (INCLUDES ITEMS 1, 2 and 8)	2

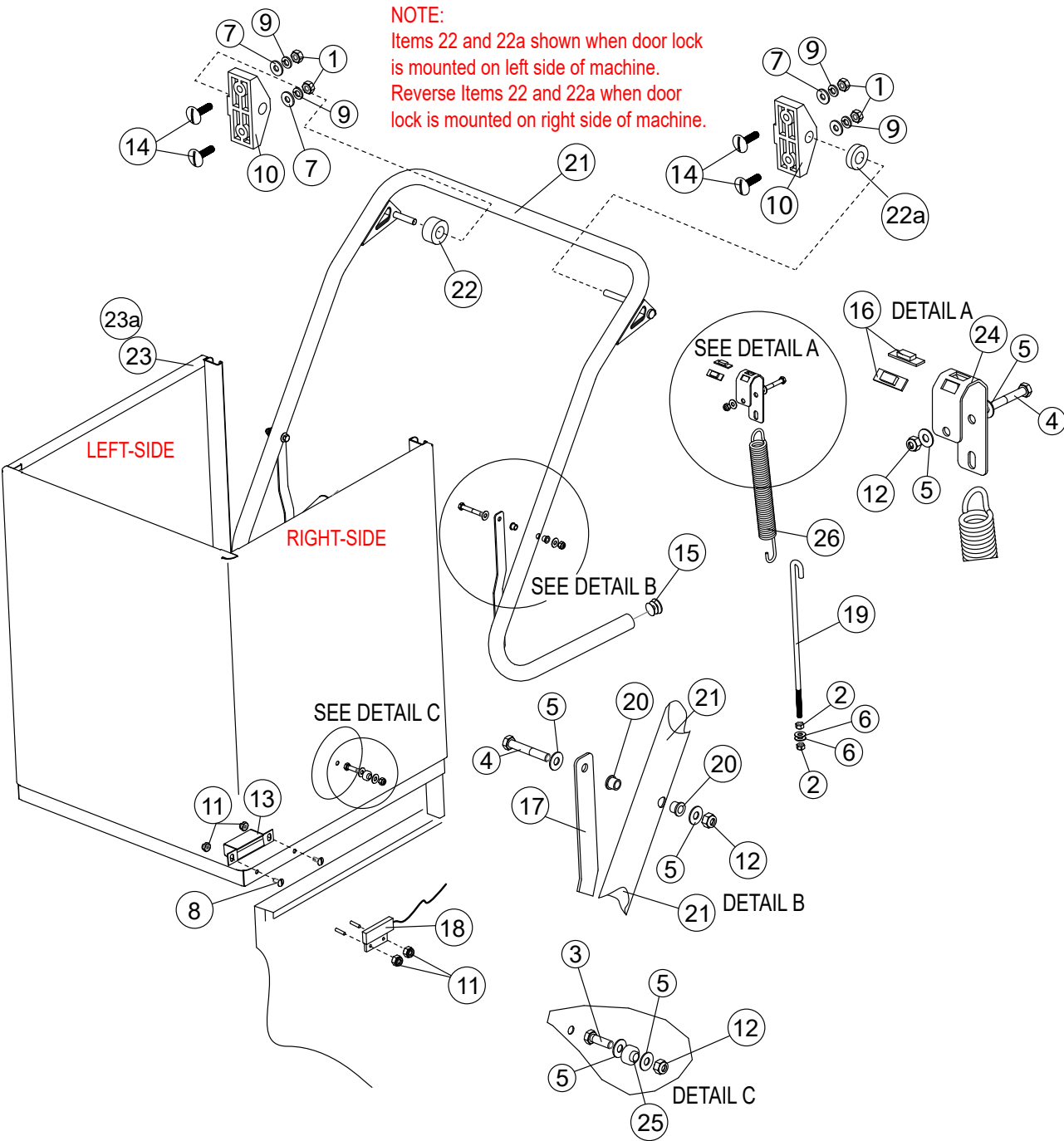


Item No.	Part No.	Description	Qty.
1	107033	WASHER, FLAT	2
2	107966	NUT GRIP, 10-32 X SST, W/NYLON INSERT	2
3	116852	PUSH BUTTON, ON/OFF 22MM	1
4*	116889	SCHNEIDER HMI, (Prior to S/N D230623034)	1
4a**	117543	WIENTEK HMI, (Beginning with S/N D230623034)	1
5	116919	NETWORK CABLE, SCHNEIDER PLC TO HMI	1
6*	330488	PANEL, FRONT (Use with Item 4 only)	1
6a**	340799	PANEL, FRONT (Use with Item 4a only)	1
7	339532	SHIELD, SPLASH, HMI	1
8	340479	PANEL, LEFT-HAND SIDE	1
9	339004	PANEL, RIGHT-HAND SIDE	1
10	100073	SCREW, 1/4-20 X 1/2", TRUSS HEAD, SST	6
---	703309	COMPLETE ASSEMBLY, SCHNEIDER HMI INCLUDES ITEMS: 1, 2, 3, 4, 5, 6	A/R
---	703375	COMPLETE ASSEMBLY, WEINTEK HMI INCLUDES ITEMS: 1, 2, 3, 4a, 5, 6a	A/R



Item No.	Part No.	Description	Qty.
1	100003	HEX, PLAIN NUT 1/4-20	2
2	100073	SCREW, 1/4-20 X 1/2", TRUSS HEAD, SST	2
3	106482	WASHER, LOCK 1/4" SPLIT SST	2
4	335780	TRACK WELDMENT	1
5	332023	TRACK, RAIL ADJUST	1

Hood and Handle - DH6000T



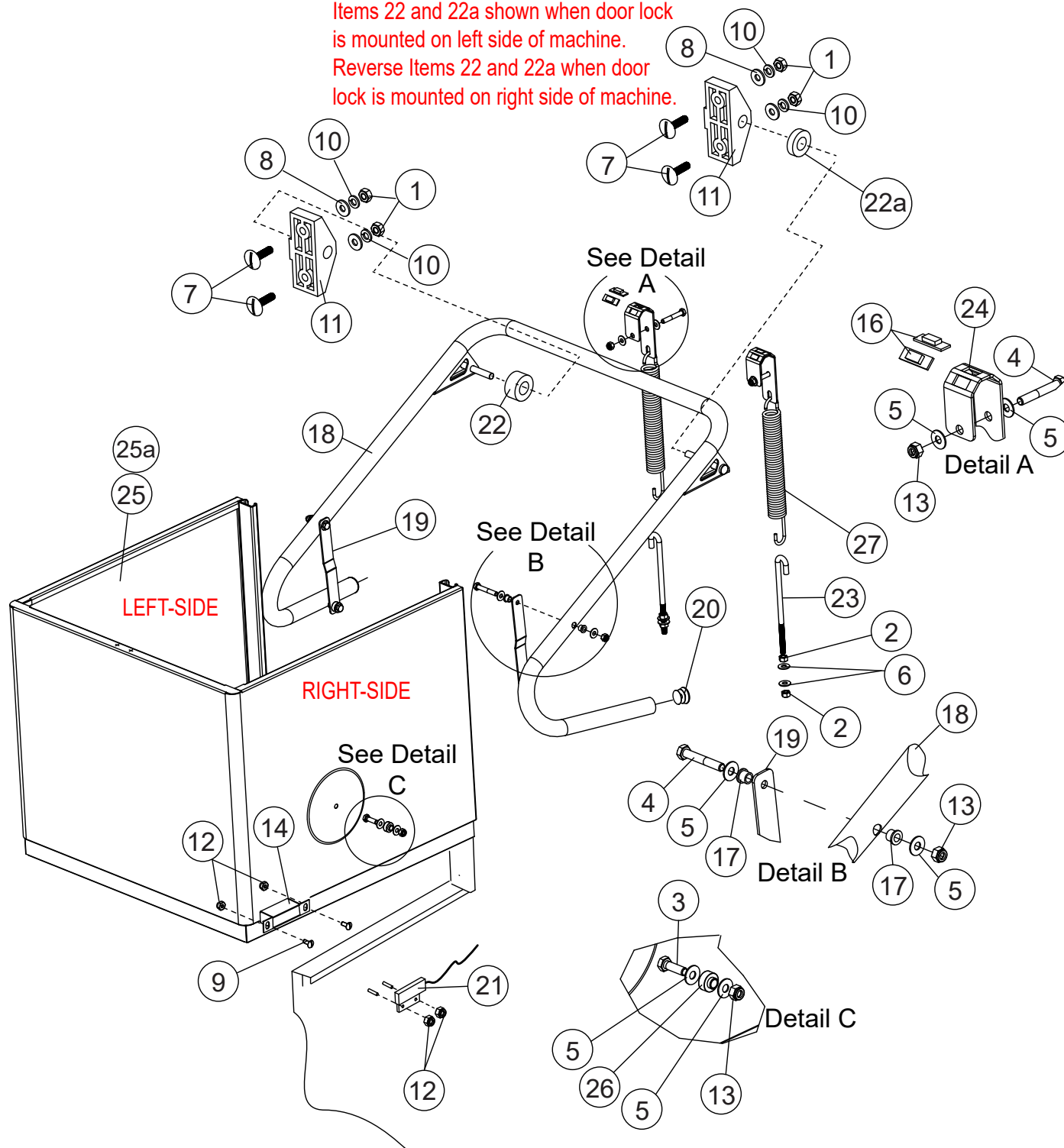


Item No.	Part No.	Description	Qty.
1	100003	HEX PLAIN NUT, 1/4-20 SST	4
2	100140	HEX PLAIN NUT, 3/8-16 SST	4
3	100740	BOLT, HEX HEAD, 5/16-18 X 1" SST	2
4	100742	BOLT, HEX HEAD, 5/16-18 X 2" SST	4
5	102376	WASHER, FLAT 5/16" SST	12
6	104618	WASHER, FLAT 3/8" SST	4
7	106026	WASHER, FLAT 1/4" SST	4
8	106382	SCREW, TRUSS HEAD 6-32 X 3/8" SST	2
9	106482	WASHER, LOCK 1/4" SPLIT SST	4
10	107399	SUPPORT, PIVOT BLOCK DOOR HANDLE	2
11	108954	NUT GRIP, 6-32 SST W/NYLON INSERT	4
12	109009	NUT GRIP, 5/16-18 SST W/NYLON INSERT	6
13	113937	MAGNET, ALEPH	1
14	115286	SCREW, 1/4-20 X 1" LG FLAT WIDE HEAD	1
15	115627	END CAP, LIFT HANDLE	2
16	115637	BUSHING, LIFT ARM	4
17	115641	LINK, HOOD ARM	2
18	113721	SWITCH, REED, DOOR SAFETY	2
19	116231	J-BOLT, 3/8-16 X 14" LG	2
20	116275	BEARING, FLANGED, SLEEVED BRONZE OIL EMBEDDED	4
21	116804	LIFT ARM, WELDMENT	1
22	117440	SPACER BUSHING (Installed on door lock side)	1
22a	117441	SPACER BUSHING (Installed on opposite side of door lock)	1
23	336125	HOOD, WELDMENT, CHAMPION (Production Only)	1
23a	336125-S	HOOD, WELDMENT, CHAMPION (For Field Replacement)	1
24	336434	BRACKET, SPRING	2
25	0509264	BUSHING, SIDE DOOR	2
26	0510459	SPRING, DOOR	2

**NOTE:**

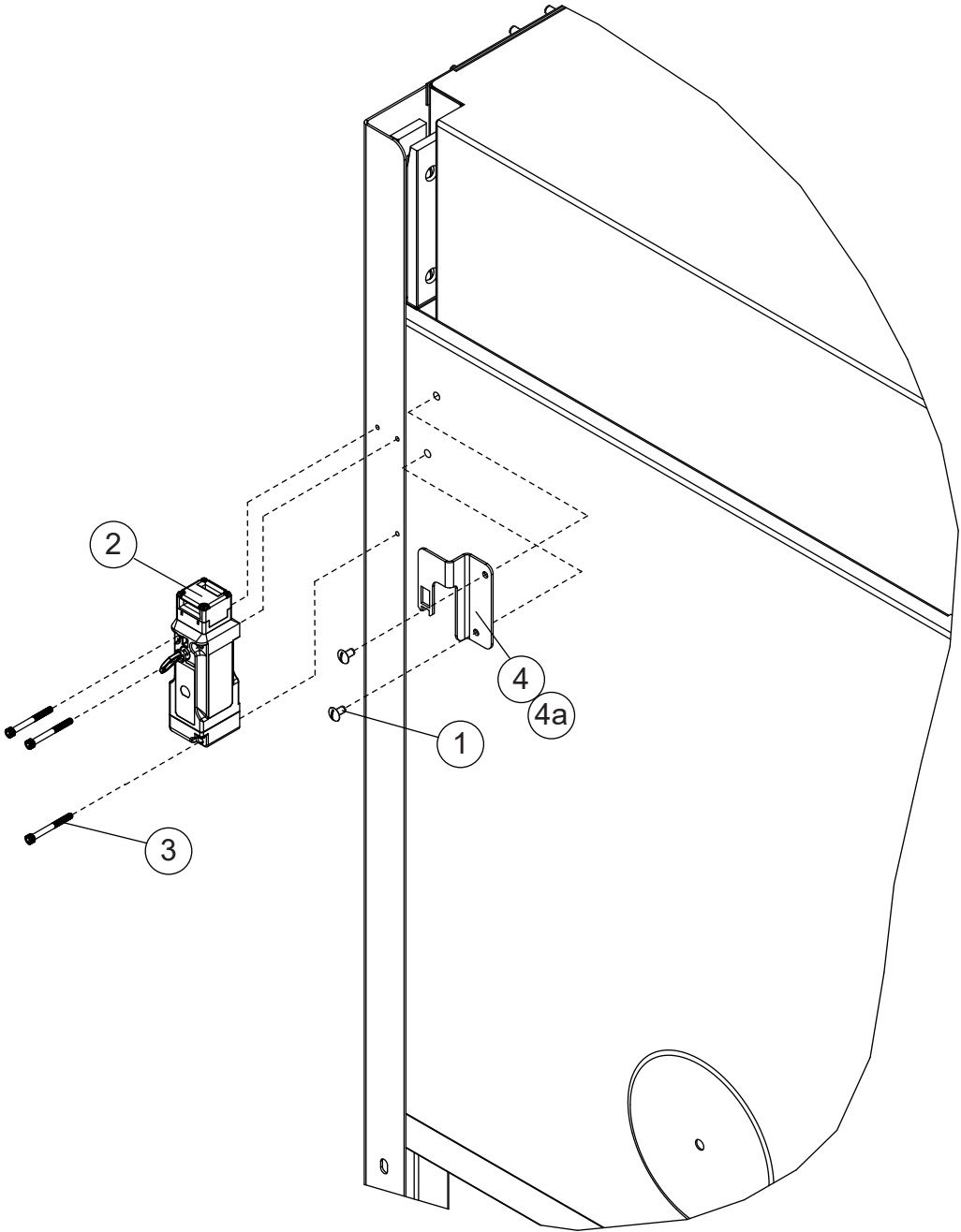
Items 22 and 22a shown when door lock is mounted on left side of machine.

Reverse Items 22 and 22a when door lock is mounted on right side of machine.



Item No.	Part No.	Description	Qty.
1	100003	HEX PLAIN NUT, 1/4-20 SST	4
2	100140	HEX PLAIN NUT, 3/8-16 SST	4
3	100740	BOLT, HEX HEAD, 5/16-18 X 1" SST	2
4	100742	BOLT, HEX HEAD, 5/16-18 X 2" SST	4
5	102376	WASHER, FLAT 5/16" SST	12
6	104618	WASHER, FLAT 3/8" SST	4
7	105286	SCREW, TRUSS HEAD 1/4-20 X 1" SST	4
8	106026	WASHER, FLAT 1/4" SST	4
9	106382	SCREW, TRUSS HEAD 6-32 X 3/8" SST	2
10	106482	WASHER, LOCK 1/4" SPLIT SST	4
11	107399	SUPPORT, PIVOT BLOCK DOOR HANDLE	2
12	108954	NUT GRIP, 6-32 SST W/NYLON INSERT	4
13	109009	NUT GRIP, 5/16-18 SST W/NYLON INSERT	6
14	113937	MAGNET, ALEPH	1
15	115627	END CAP, LIFT HANDLE	2
16	115637	BUSHING, LIFT ARM	4
17	116275	BEARING, FLANGED, SLEEVED BRONZE OIL EMBEDDED	4
18	116768	LIFT ARM, DOOR	1
19	116772	LINK ARM, DOOR	2
20	115627	END CAP, LIFT HANDLE	2
21	113721	SWITCH, REED, DOOR SAFETY	1
22	117440	SPACER BUSHING (Installed on door lock side)	1
22a	117441	SPACER BUSHING (Installed on opposite side of door lock)	1
23	117064	J-BOLT, 8" LG., 3/8-16 SST	2
24	336434	BRACKET, SPRING	2
25	338433	DOOR WELDMENT (Production ONLY)	1
25a	338433-S	DOOR WELDMENT (For Field Replacement)	1
26	0509264	BUSHING, SIDE DOOR	2
27	0510459	SPRING, DOOR	2

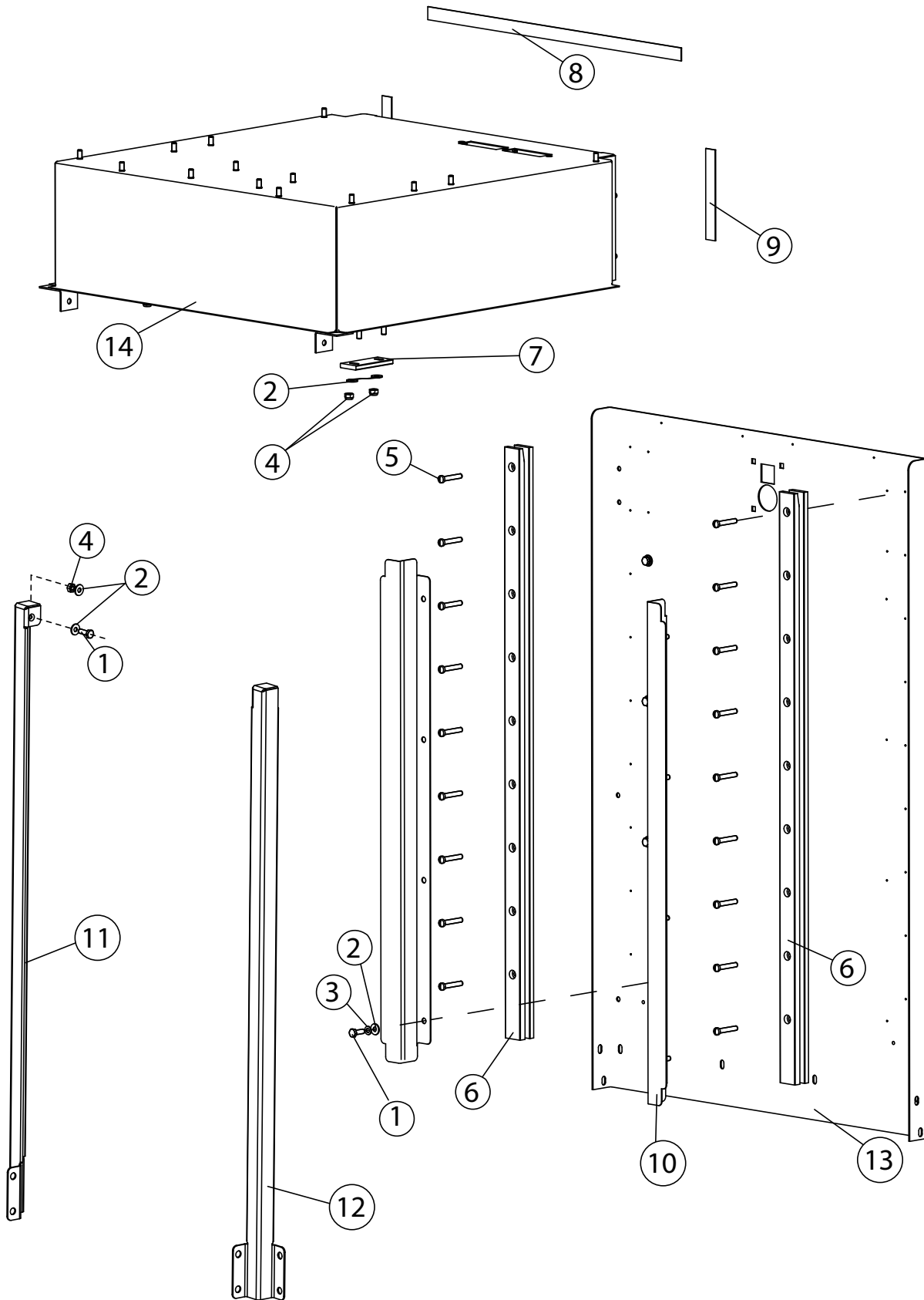
Door Lock



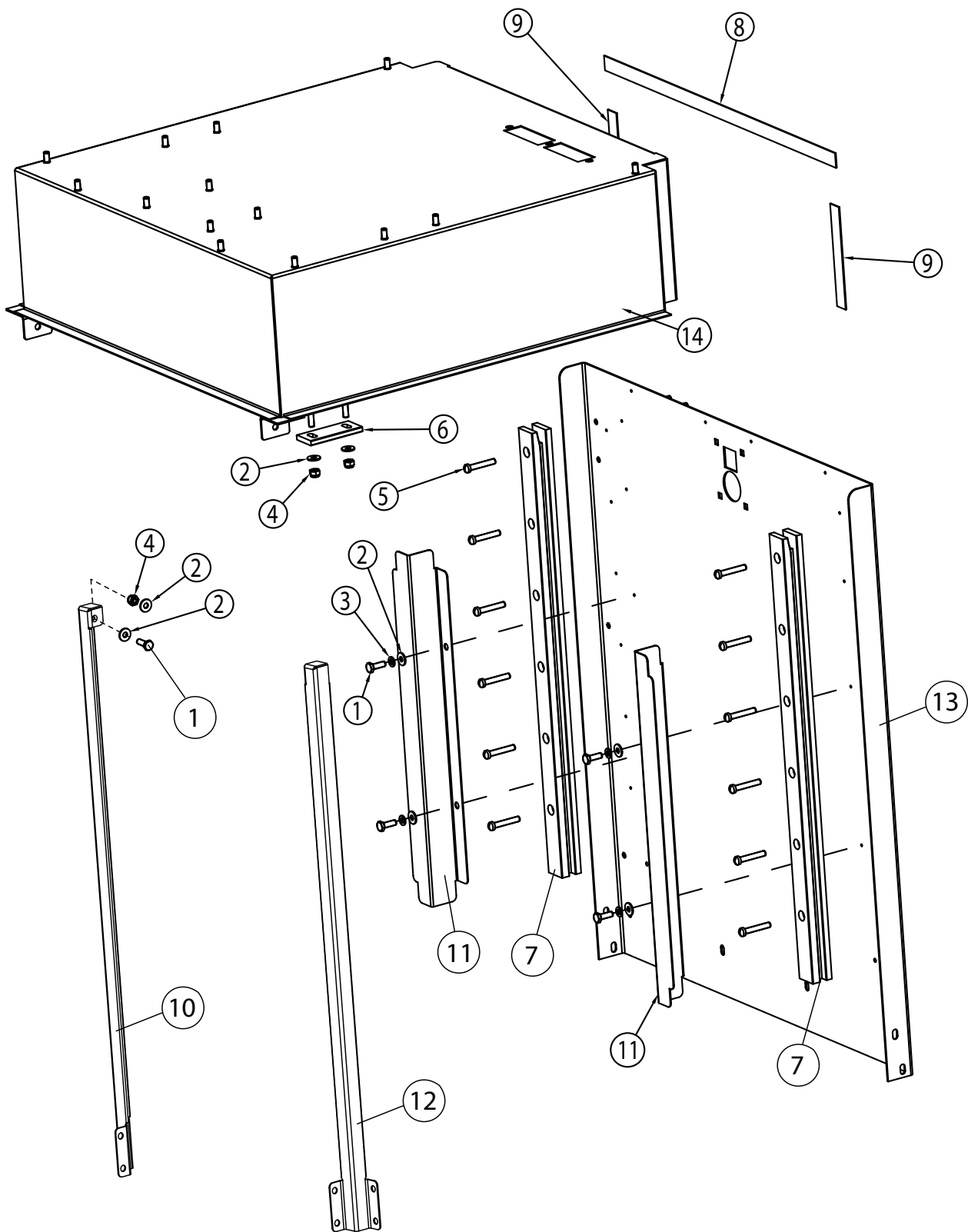
LEFT-HAND MOUNTING SHOWN

Item No.	Part No.	Description	Qty.
1	100097	SCREW, 10-32 X 1/2", TRUSS HEAD SST	2
2	117232	SWITCH, INTERLOCK, IDEC	1
3	117372	SOCKET HEAD, CAP SCREW, 8-32 X 1.625" X 18-8 SST	3
4	340513	DOOR LOCK PLUNGER, LH-MOUNTED	1
4a	340512	DOOR LOCK PLUNGER, RH-MOUNTED	1

## Back Support and Guides - DH6000T



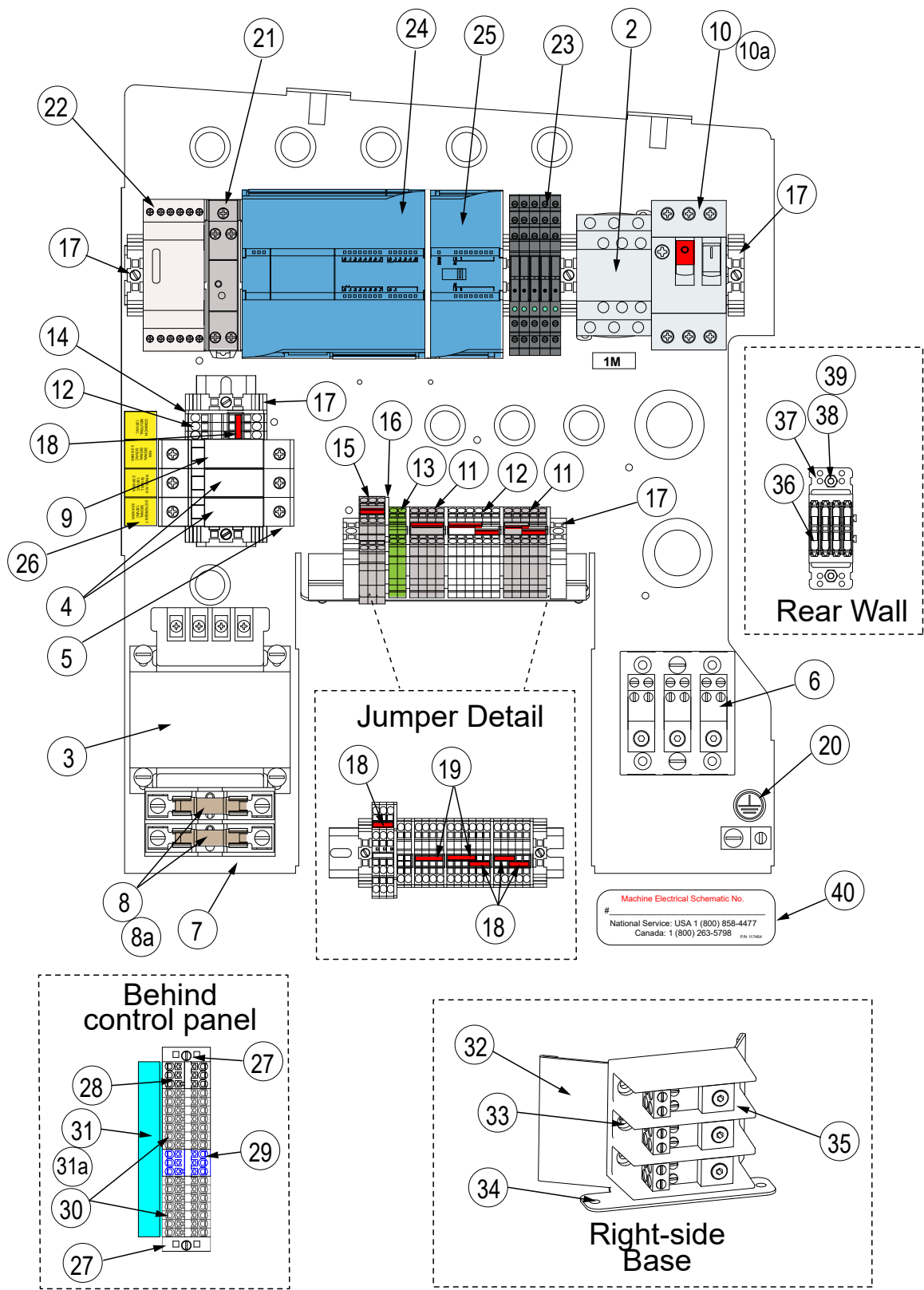
Item No.	Part No.	Description	Qty.
1	100736	BOLT, HEX HEAD, 1/4-20 X 3/4" SST	18
2	106026	WASHER, FLAT 1/4" SST	24
3	106482	WASHER, LOCK 1/4" SPLIT, SST	16
4	107967	NUT, GRIP, 1/4-20 SST W/NYLON INSERT	6
5	114866	SCREW, FILLISTER HEAD, 1/4-20 X 1-1/2" SST	18
6	114886	GUIDE, HOOD	2
7	116425	HOOD, GUIDE STATIONARY	2
8	207315	GASKET, 20-1/4" LG X 3/4" WD PORON 1/8" THK.	1
9	207316	GASKET, 5-1/4" LG X 3/4" WD PORON 1/8" THK.	2
10	334621	BAFFLE, DEFLECTOR HOOD	2
11	340532	VERTICAL HOOD SUPPORT, LH	1
12	340533	VERTICAL HOOD SUPPORT, RH	1
13	338486	BACK SUPPORT, WELDMENT	1
14	339587	TOP, HOOD	1



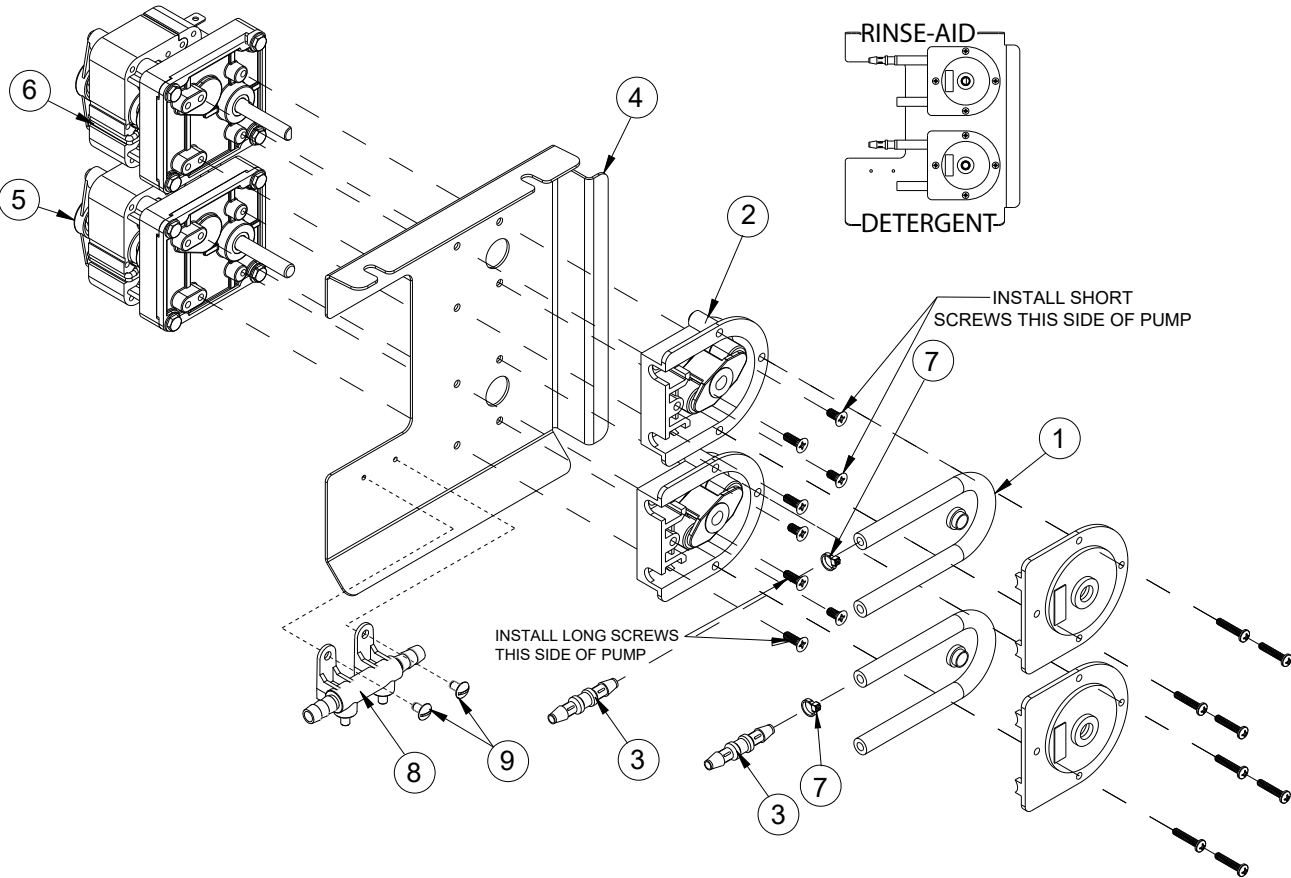


Item No.	Part No.	Description	Qty.
1	100736	BOLT, HEX HEAD, 1/4-20 X 3/4" SST	6
2	106026	WASHER, FLAT 1/4" SST	12
3	106482	WASHER, LOCK 1/4" SPLIT, SST	4
4	107967	GRIP NUT, 1/4-20 SST W/NYLON INSERT	6
5	117012	SCREW, FILLISTER HEAD, 1/4-20 X 1" SST	12
6	116425	HOOD, GUIDE STATIONARY	2
7	116773	GUIDE, DOOR DH6000	2
8	207315	GASKET, 20-1/4" LG X 3/4" WD PORON 1/8" THK.	1
9	207316	GASKET, 5-1/4" LG X 3/4" WD PORON 1/8" THK.	2
10	340575	VERTICAL HOOD SUPPORT, LH	1
11	338410	BAFFLE, DEFLECTOR HOOD	2
12	334576	VERTICAL HOOD SUPPORT, RH	1
13	338431	BACK SUPPORT, WELDMENT	1
14	339587	TOP, HOOD	1

Control Panel

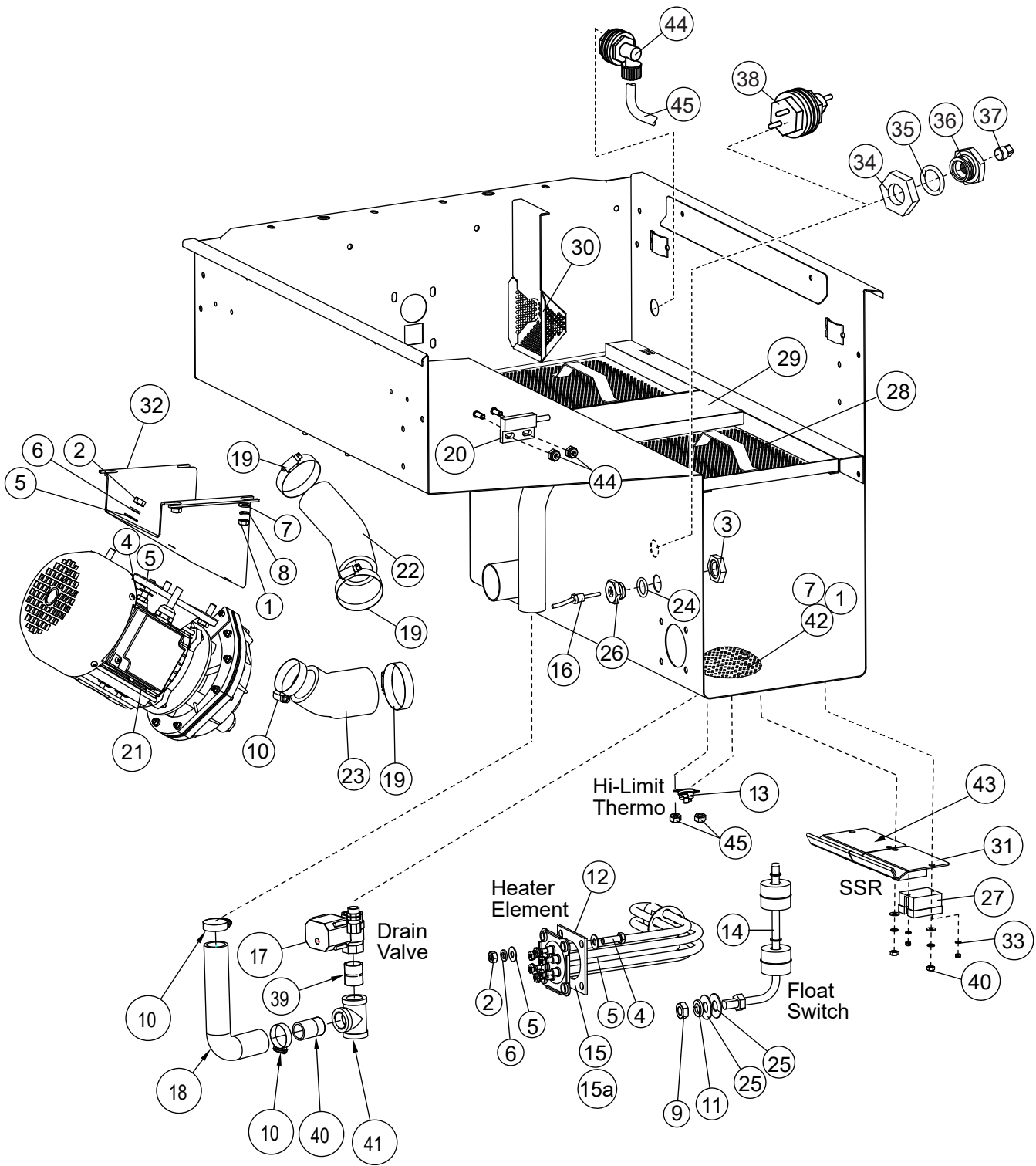


Item No.	Part No.	Description	Qty.
1	103310	LUG, GROUND WIRE	1
2	108122	CONTACTOR, 12A, 3-POLE	1
3	109064	XFRMR, INPUT 250VA, 240.480/230/460: 110-120V	1
4	111115	FUSE, ATMR-2, 2A ONE-TIME	2
5	111153	FUSE HOLDER ASSY.	3
6	111833	INPUT TERMINAL BLOCK, 175A, 3-POLE	1
7	112424	FUSE BLOCK, KIT, 2-POLE	1
8	112482	FUSE, ATDR, 3.5A, LPCC-3.5 600V (208-240V/60/1&3)	2
8a	112484	FUSE, ATDR, 1.5A, LPCC-1.5 600V (480V/60/3)	2
9	112901	FUSE, ATDR, 1A, TIME DELAY	1
10	113161	MOTOR STARTER, 9.0-14.0A (208-240V/60/1&3)	1
10a	111627	MOTOR STARTER, 2.5-4.0A (480V/60/3)	1
11	114512	TERMINAL SINGLE, PT 2.5, GRAY	9
12	114514	TERMINAL SINGLE, PT 2.5, WHITE	9
13	114515	TERMINAL SINGLE, GROUND, GREEN PT 2.5 PE	2
14	114516	END COVER, SIGNAL TERMINAL D-ST 2.5	5
15	114517	TERMINAL DOUBLE, STTB 2.5	3
16	114518	END COVER, DOUBLE TERMINAL D-PTTB 2.5	1
17	114519	END BLOCK, E/NS 35N	8
18	114524	BRIDGE, 3-POLE FBS 3-5	6
19	114823	BRIDGE, 4-POLE FBS 4-5	2
20	115098	LABEL, GROUND, GREEN 3/4"	1
21	115607	SLIM 24VDC, 30W, POWER SUPPLY, PSSR-VC24	1
22	117243	DETERGENT SIGNAL CONDITIONER, DC VERSION	1
23	117423	SLIM RELAY, 6A, 110VAC/DC	5
24	117446	PLC, SIEMANS S7-1214C "Needs Programming"	1
25	117447	RTD TEMPERATURE MODULE, 4CH, SIEMENS SM 1231	1
26	117470	LABEL, FAN/RINSE/DET CONNECTIONS	1
27	117515	TERMINAL STRIP END BLOCK, PTFIX-F	2
28	117516	TERMINAL STRIP, 6PT BRIDGED WHITE, PTFIX 6 X 2.5 WH	1
29	117517	TERMINAL STRIP, 6PT BRIDGED BLUE, PTFIX 6 X 2.5 BU	1
30	117518	TERMINAL STRIP, 2PT GRAY, PTFIX 2 X 2.5 GY	14
31	117545	LABEL, TERMINAL STRIP, BLUE ( <i>For mechanical DWT</i> )	1
31a	117663	LABEL, TERMINAL STRIP, BLUE ( <i>For Electric DWT/Drain Pump</i> )	1
32	340539	BRACKET, 2-POINT, INCOMING ELECTRICAL COMPONENTS	1
33	100007	SCREW, TRUSS HD, 10-32" X 3/8" SST	2
34	107136	BOLT, 10-32 X 38" HEX HEAD, SST	2
35	111833	INPUT TERMINAL BLOCK, 175A 3-POLE	2
36	117525	INLINE SPLICE, 2-CONDUCTOR	4
37	117559	MOUNT CARRIER, INLINE SPLICE TERMINAL	1
38	108954	HEX GRIP NUT, 6-32 SST W/NYLON INSERT	2
39	106382	SCREW, TRUSS HEAD 6-32 X 3/8" SST	2
40	117464	LABEL, ELECTRICAL SCHEMATIC NO.	1



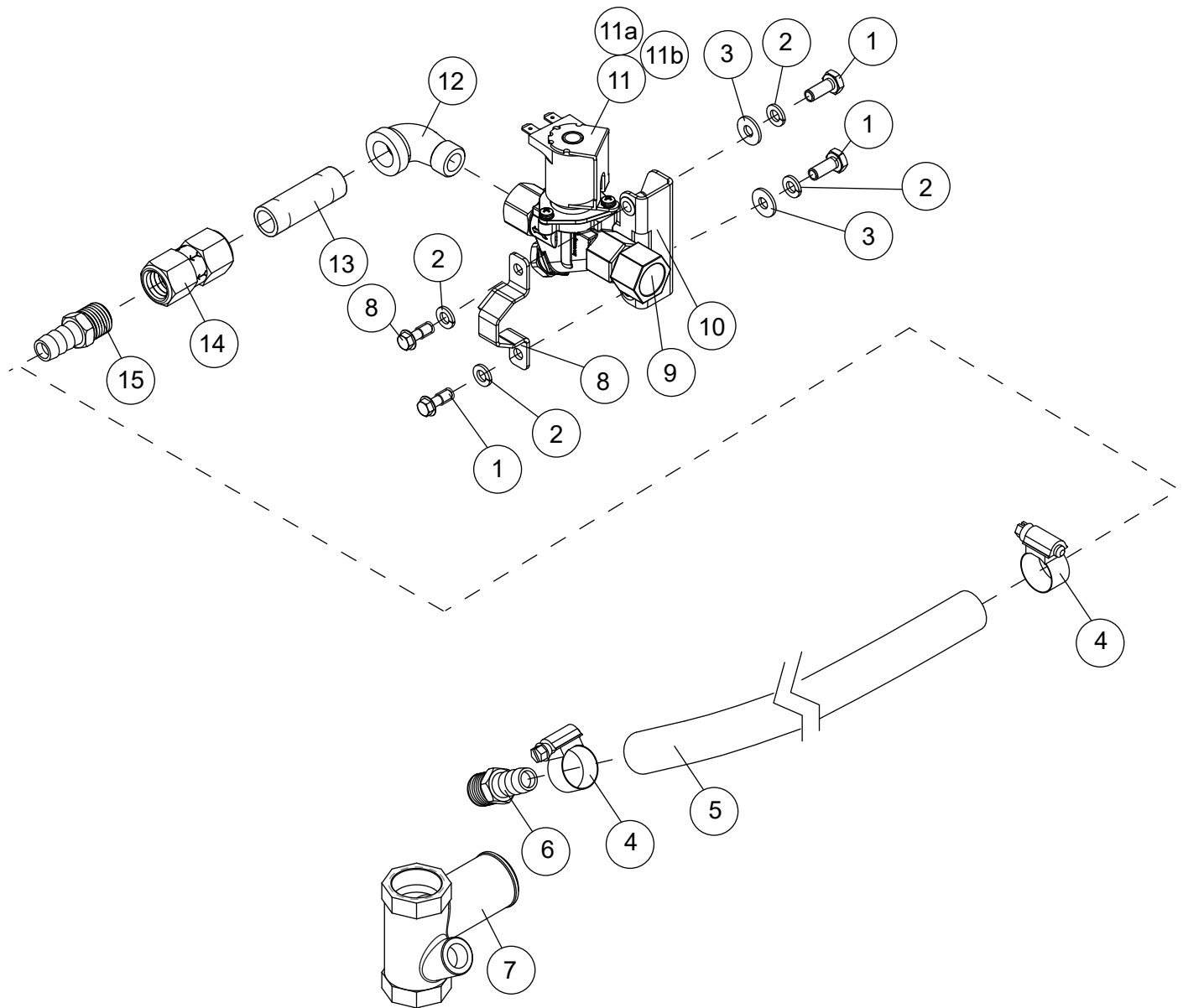
Item No.	Part No.	Description	Qty.
1	114202	TUBE, SANTOPRENE, TPE6ON 3/16" X 3/8" X 9" LG.	2
2	114203	HEAD, PUMP PERISTALTIC ASSY. KIT, WITH ROLLERS	2
3	116979	HOSE BARB, 1/4" TO 1/4" POLYETHYLENE	2
4	340523	BRACKET, TWIN DETERGENT PUMP MOUNT	1
5	0510870-1	GEARMOTOR, 108 RPM, 115VAC DETERGENT 220 ML/MIN	1
6	0510872-1	GEARMOTOR, 14 RPM, 115VAC, RINSE-AID	1
7	114566	CABLE TIE, MINIATURE, 7"	2
8	117011	SENSOR, INLINE	1
9	106460	SCREW, 6-32 X 1/4", TRUSS HEAD SST	2

Wash Tank



Item No.	Part No.	Description	Qty.
1	100003	NUT, PLAIN 1/4-20 SST	7
2	100154	NUT, PLAIN 5/16" SST	8
3	100547	LOCKNUT, 1/2" NPT SST FORGED	2
4	100740	BOLT, HEX HEAD 5/16-18 X 1" SST	8
5	102376	WASHER, FLAT 5/16" SST	16
6	106013	WASHER, LOCK 5/16" SPLIT SST	8
7	106026	WASHER, FLAT 1/4" SST	7
8	106482	WASHER, LOCK 1/4" SPLIT SST	7
9	107089	NUT, JAM 1/2-13 SST	1
10	107340	CLAMP, HOSE M28 W/CS SCREW	3
11	107589	WASHER, LOCK 1/2" SPLIT SST	1
12	108345	GASKET, HEATER, 3" X 3" X 1/8"- 2-HOLE	1
13	113604	THERMOSTAT FIXED HIGH LIMIT, SNAP, 212°F	1
14	113291	FLOAT SWITCH	1
15	114178	HEATER, 5.2KW 208-240/1-3 90° TANK	1
15a	114179	HEATER, 5.2KW, 480V/60/3 90° TANK	1
16	117454	RTD TEMPERATURE SENSOR	1
17	117659	VALVE, ELECTRIC DRAIN, NC, 115VAC, W/COVER	1
18	117298	HOSE, OVERFLOW, 90°	1
19	114720	CLAMP, HOSE M36 W/CS SCREW	5
20	113721	SWITCH, DOOR SAFETY	1
21	115143	1HP PUMP/2HP MOTOR ASSY (SEE PAGE 3 FOR OTHERS)	1
22	117215	HOSE, PUMP DISCHARGE	1
23	117216	HOSE, PUMP SUCTION	1
24	115489	O-RING	2
25	115490	WASHER, FLAT	2
26	108954	GRIP NUT, 6-32 SST W/NYLON INSERT	8
27	115648	RELAY, SOLID STATE, 90A	4
28	305164	SCREEN, WELDMENT, 10-3/8"	2
29	332544	SUPPORT, FILLER SCREEN	1
30	333021	SCREEN, SUCTION	1
31	340518	PLATE, HEAT SINK	1
32	338901	BRACKET, PUMP MOUNTING	1
33	115467	WASHER	4
34	100547	LOCKNUT, 1/2" NPT, SST	1
35	107414	TUBING, HIGH DENSITY	6 FT.
36	115530	ADAPTER	1
37	100210	PLUG, 1/8" NPT, SQUARE HEAD, SST	
38	116785	PROBE, CHEMICAL P120S, KNIGHT #7005190	1
39	100694	NIPPLE, CLOSE 1" NPT SST	1
40	116431	NIPPLE TOE, 1" X 2" SST	1
41	102530	TEE, 1" NPT SST	1
42	304816	SCREEN, DRAIN 6" DIA.	1
43	110563	HEAT SINK COMPOUND	A/R
44	116780	FITTING, KNIGHT DETERGENT INJECTOR	1

## Optional Electric Drain Water Tempering Assembly - Beginning with S/N D230623061

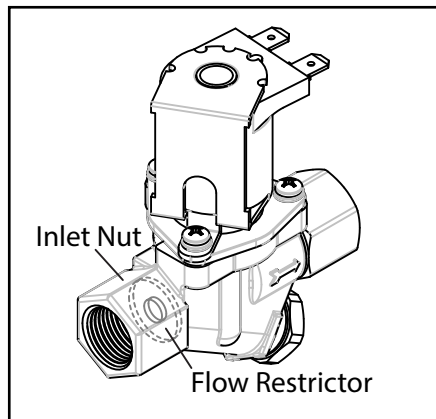


**NOTE:**  
THE MECHANICAL DWT ASSEMBLY  
P/N 117084 IS NO LONGER AVAILABLE.



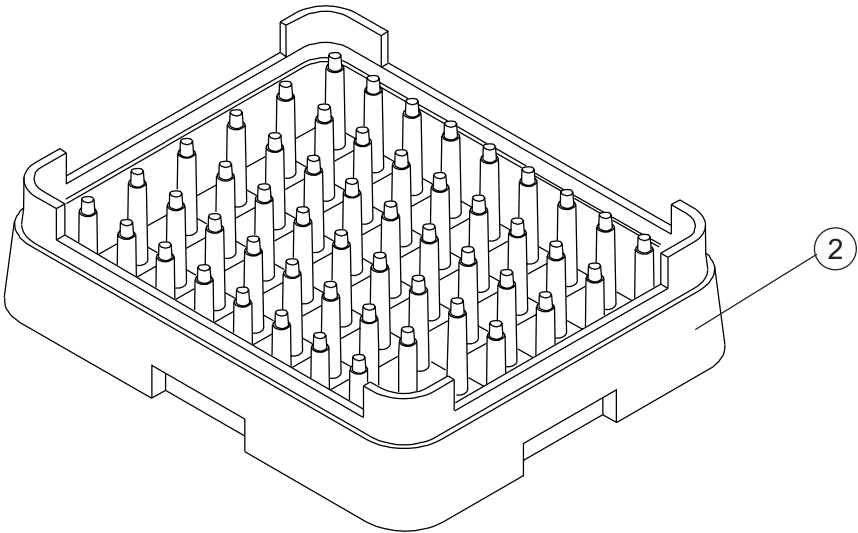
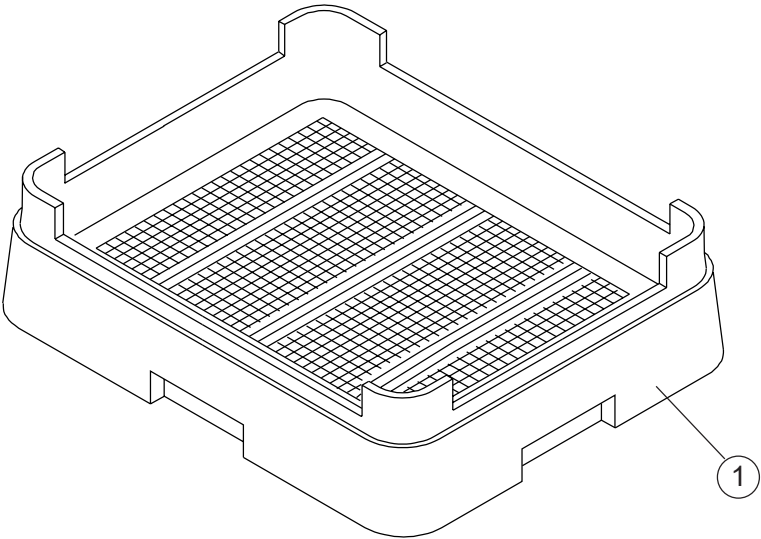
## Optional Electric Drain Water Tempering Assembly - Beginning with S/N D230623061

Item No.	Part No.	Description	Qty.
1	100735	BOLT, HEX HEAD, 1/4-20 X 5/8" SST	4
2	106482	WASHER, LOCK 1/4", SPLIT, SST	4
3	106062	WASHER, FLAT, 1/4", SST	2
4	105994	CLAMP, HOSE, M10, 14/27, SST GEAR-TYPE	2
5	207971	HOSE, BLUE, 1/2" ID, DWT INJECTION, DM	1
6	117597	BARB, HOSE ST, 3/8" NPT, 1/2" H SST, 304	1
7	117578	MANIFOLD, DRAIN TEMPERING	1
8	340915	CLAMP, ELEC., DWT INLET PIPING SUPPORT, DH6000/T-M2	1
9	117644	ADAPTER, 3/8" MPT X 1/2" FPT, HEX , BRASS	1
10	340910	BRACKET, ELEC., DWT, INLET PIPING, SUPPORT	1
11	0504952	VALVE, SOLENOID, W/O FLOW RESTRICTOR (SEE NOTE)	1
11a	0502811	REPAIR KIT, VALVE SOLENOID	A/R
11b	0505235	COIL, SOLENOID, 115V/60/1	A/R
12	102431	ELBOW, STREET, 3/8" X 90°, BRASS	1
13	102467	NIPPLE, 3/8" NPT X 2" LG., BRASS	1
14	0507324	VALVE, CHECK, 3/8"	1
15	112799	BARB, HOSE ST, 3/8" NPT, X 1/2" H, BRASS	1



**NOTE:**

REMOVE FLOW RESTRICTOR BEFORE INSTALLING REPLACEMENT VALVE, P/N 0504952, ITEM 11.



**Dish Racks**

<b>Item No.</b>	<b>Part No.</b>	<b>Description</b>	<b>Qty.</b>
1	101273	DISH RACK, FLAT-BOTTOM	A/R
2	101285	DISH RACK, PEG	A/R
-	114356	RACK, SHEET PAN, OPEN END, (Not Shown)	A/R

