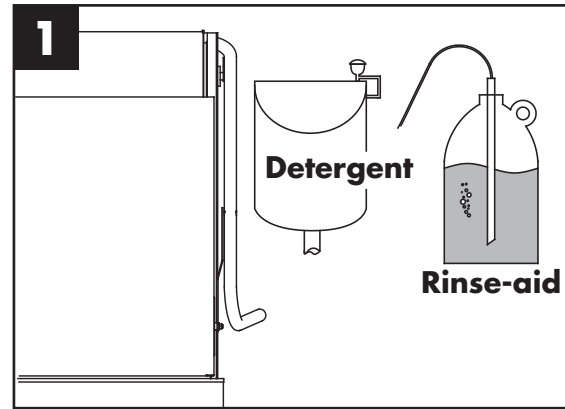
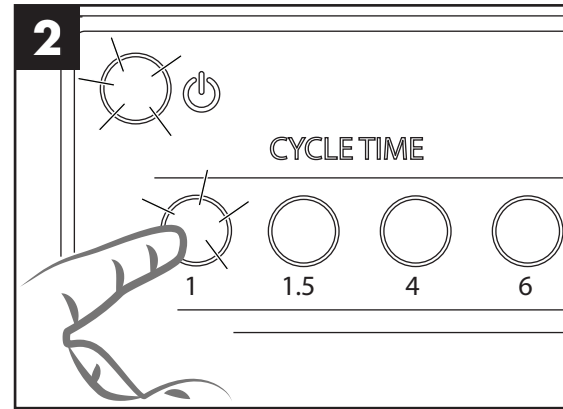


Tall Hood-type Operation/Cleaning Guide

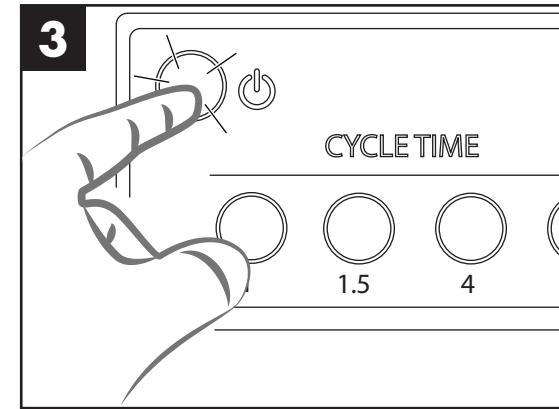
OPERATION



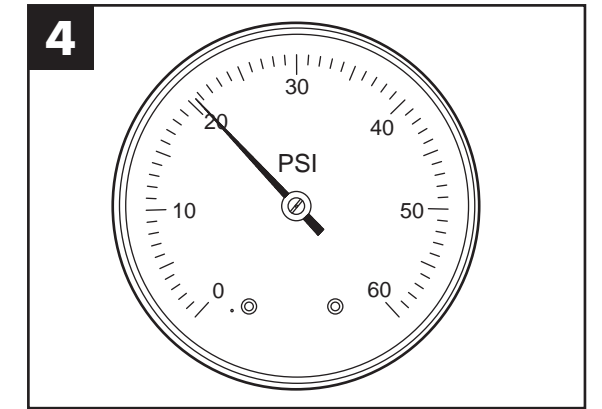
Check the chemical levels in the containers.



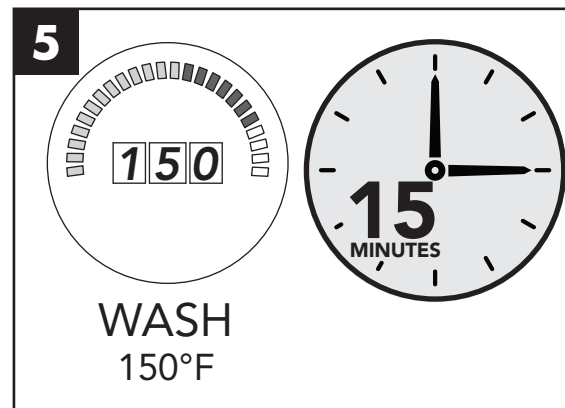
Close the door and select the wash time (1, 1.5, 4 or 6 min.)



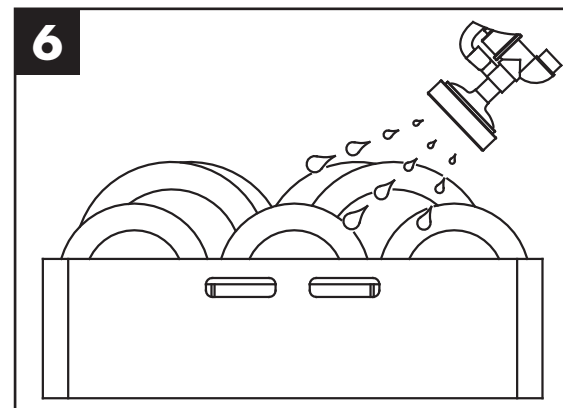
Press the power button ON. The machine will fill.



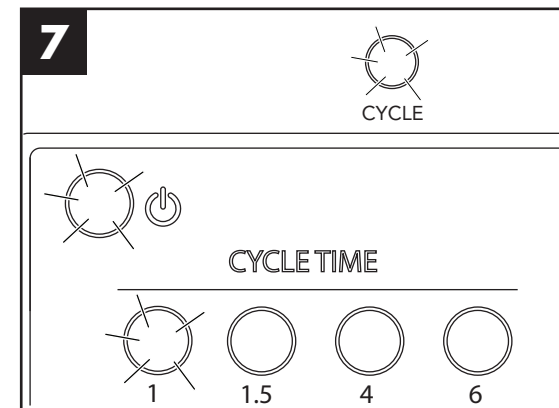
Check the pressure gauge and make sure it indicates 20-22 PSI.



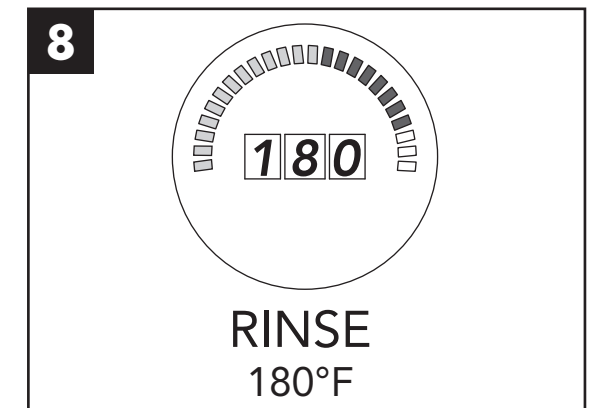
Wait 15 minutes for the display to indicate 150°F/66°C.



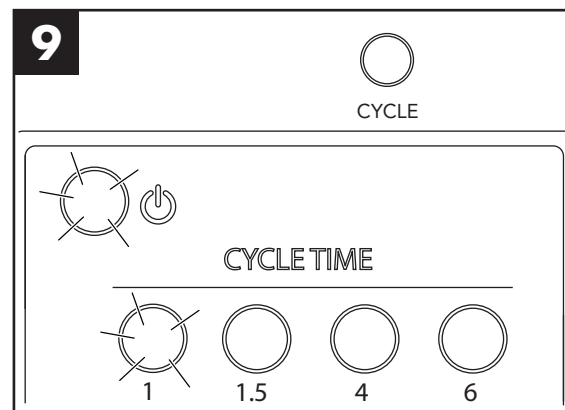
Prescrap and load wares into dish racks. Wash one rack at a time.



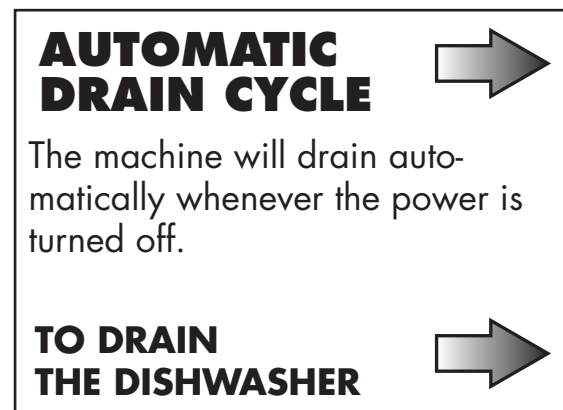
Load the dish rack & close the door. The green cycle light illuminates & the timed cycle begins.



The final rinse water temperature display must indicate a minimum of 180°F/82°C during the final rinse.



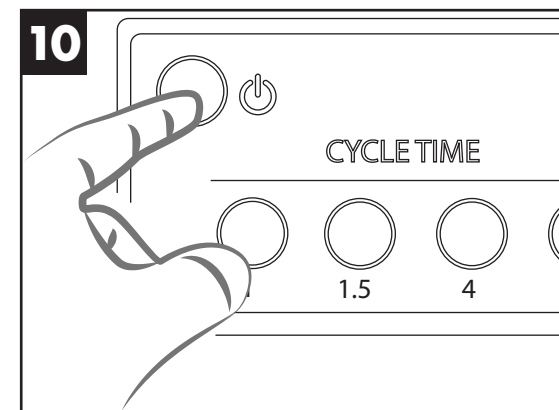
Remove the dish rack of clean wares when the green cycle goes out.



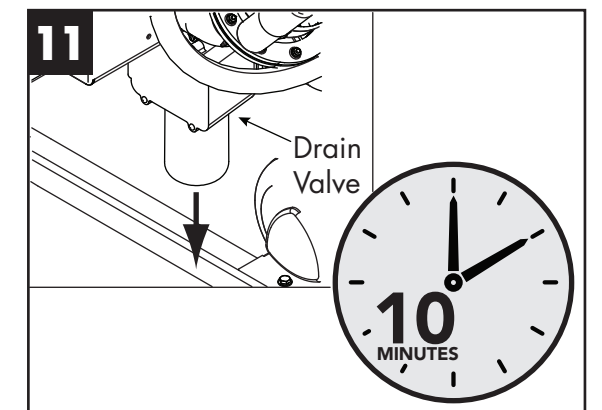
AUTOMATIC DRAIN CYCLE

The machine will drain automatically whenever the power is turned off.

TO DRAIN THE DISHWASHER



Push the power button OFF. The cycle light will not come on. The power light goes out.

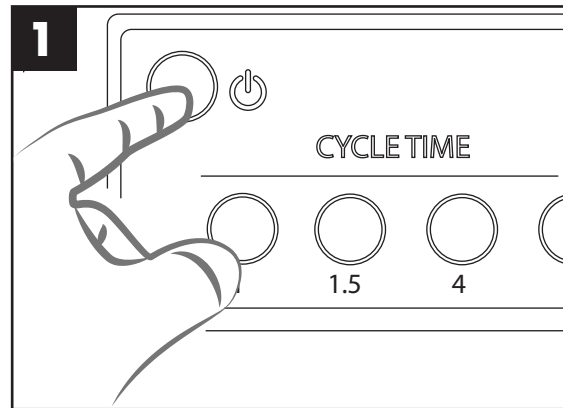


The automatic drain valve opens for 10 minutes to drain the machine.

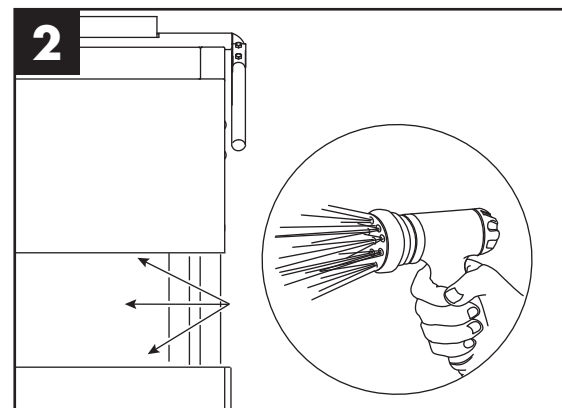
Tall Hood-type Operation/Cleaning Guide

CLEANING

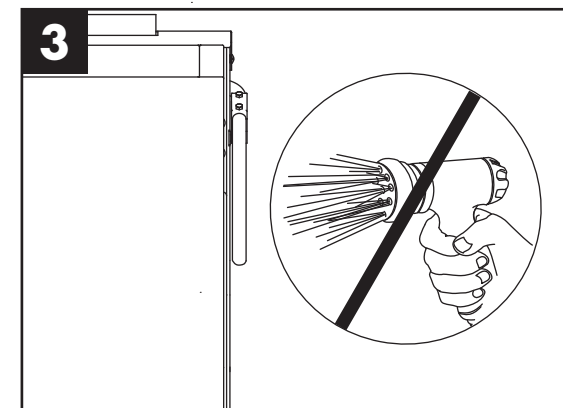
Every 2 hours and at the end of the day



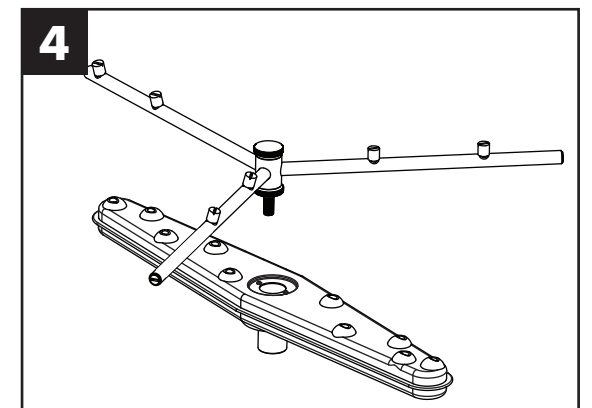
1 Push the power button OFF to drain the machine.



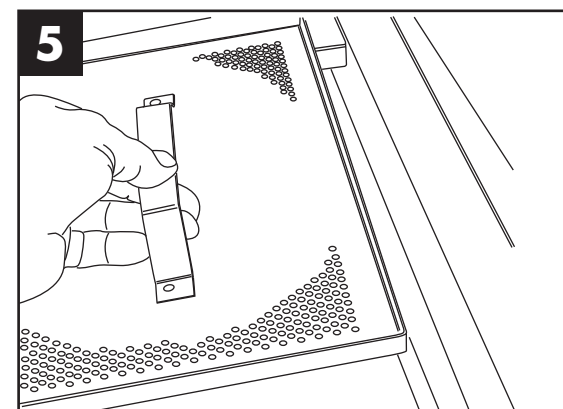
2 Spray the interior of the machine with fresh clean water.



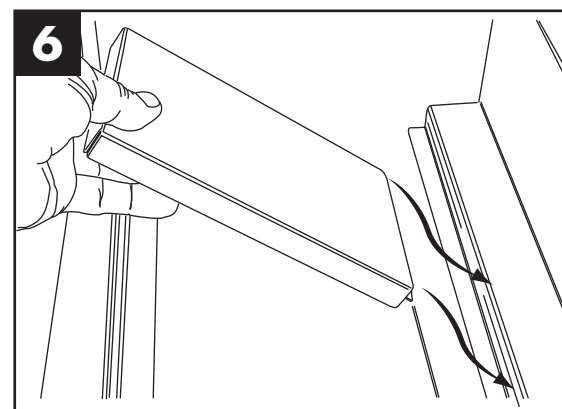
3 DO NOT spray the exterior of the machine with water.



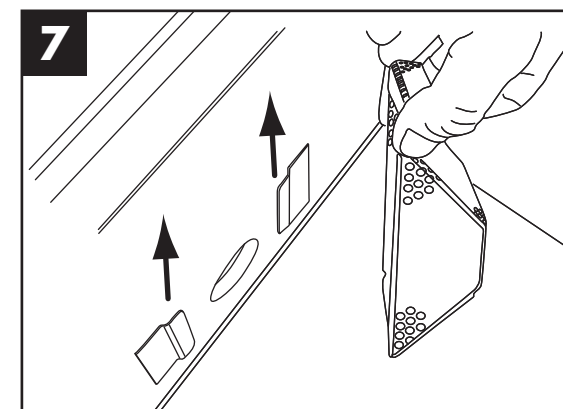
4 Remove the upper & lower spray arms and flush clean.



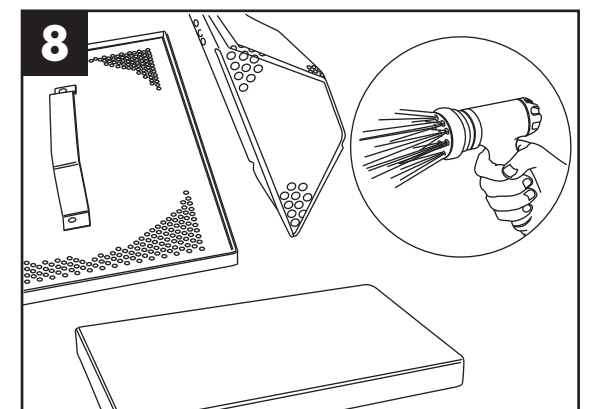
5 Remove the scrap screens from the machine.



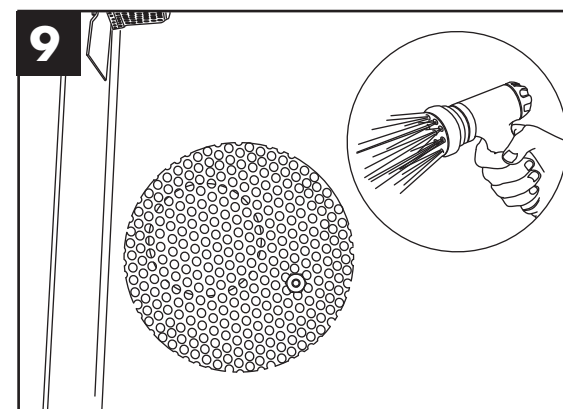
6 Remove the scrap screen support filler plate.



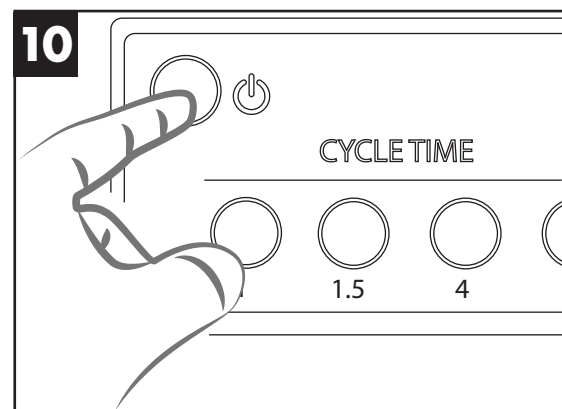
7 Remove the pump suction screen.



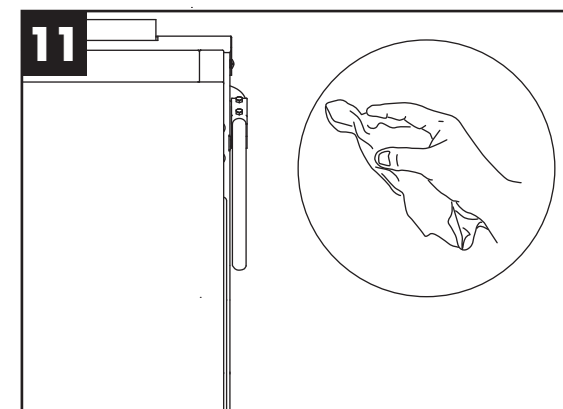
8 Back flush the screens and plate in a remote sink. DO NOT strike the screens against hard objects.



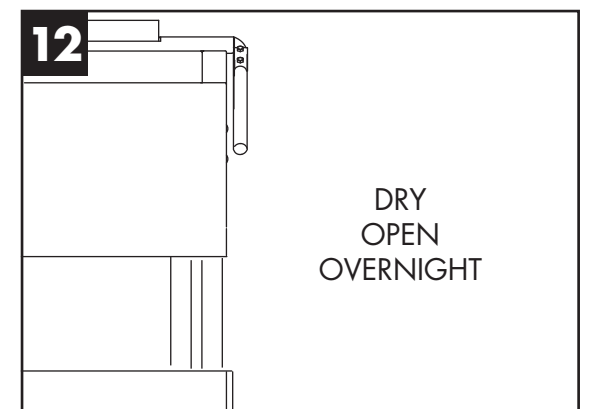
9 Clean the round drain screen and flush the bottom of the tank.



10 Push the power button ON and immediately OFF to drain.



11 Wipe the exterior with mild detergent and dry with soft cloth.



12 Reassemble machine and leave door open to aid in overnight drying.