



NOTE

Dishwashers are shipped from the factory for Straight-through operation. Refer to the diagrams below and on the next page to convert a Straight-through operation machine to a Corner operation machine. Dish racks enter and exit the sides of a straight-through machine. Dish racks enter the side and exit the front of corner operation machine.

TO CONVERT THE DISHWASHER FOR CORNER OPERATION

1. Convert dishwasher before it is placed in its final position and before connecting utilities.
2. The LCD display must be clearly visible to the operator when facing the front of the machine. In addition, the door handles should move freely without interference from walls or other obstructions. The minimum wall clearance is 4" [102mm].
3. Position the dishwasher as shown below and refer to the next page for instructions on changing the dish rack guides and door operation (see Fig. 1, Fig. 2, and Fig. 3).

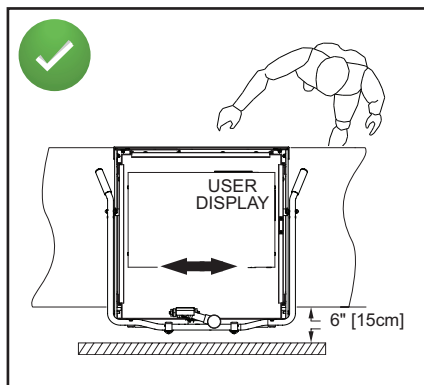


Fig. 1 - Correct Orientation for Straight-through Operation

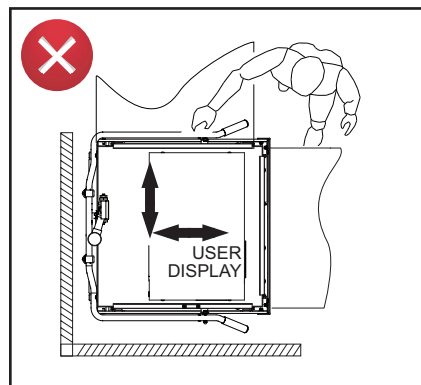


Fig. 2 - Incorrect Orientation for Corner Operation – Does not allow access to service critical components

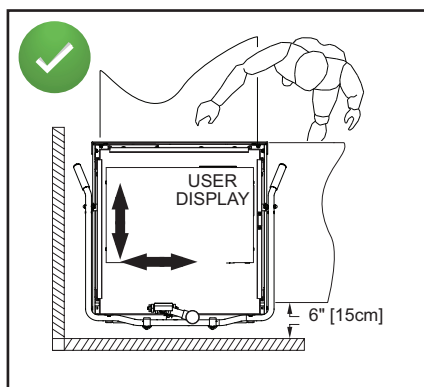


Fig. 3 - Correct Orientation for Corner Operation

Due to an ongoing value analysis program at Champion and Moyer Diebel, specifications contained in this catalog are subject to change without notice.

P/N 117961 rev. -

CONVERTING STRAIGHT-THROUGH OPERATION TO CORNER OPERATION (CONT.)

TO CONVERT TRACK GUIDES AND DOOR-LIFT FOR CORNER OPERATION

1. Remove the rack guide (A); save the fasteners. Move (A) and re-attach as shown (see Fig. 4).
2. Slide a dish rack through the machine to check the guide to dish rack clearance. The dish rack should move smoothly without binding or tipping on the guides.
3. Disconnect the door-lift bracket (B) connecting the front door and the wall-side door and discard. To seal the holes, re-install the bolts and lockwashers that held the bracket (see Fig. 5).

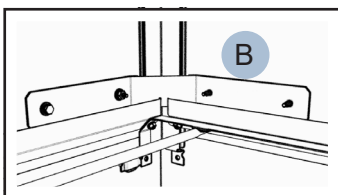


Fig. 5 - Door-lift Bracket (B) Removal

4. Disconnect the door linkage arm (C) from the wall-side door and discard. Re-install the white roller (D) and hardware (see Fig. 6).

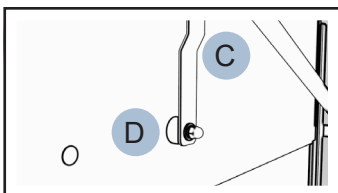


Fig. 6 - Door Linkage Arm (C) Removal & White Roller (D)

5. Disconnect the door linkage arm (C) from the other door but do not discard.
6. Lift the handle up and back until the springs relax.
7. Adjust the door spring hooks (E) located at the rear of dishwasher to reduce door spring tension until the front and side doors open and close without binding (see Fig. 7).

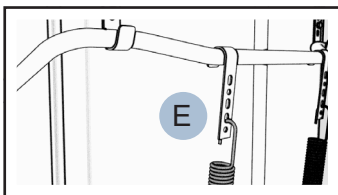


Fig. 7 - Door Spring Hooks (E) Tension Adjustment

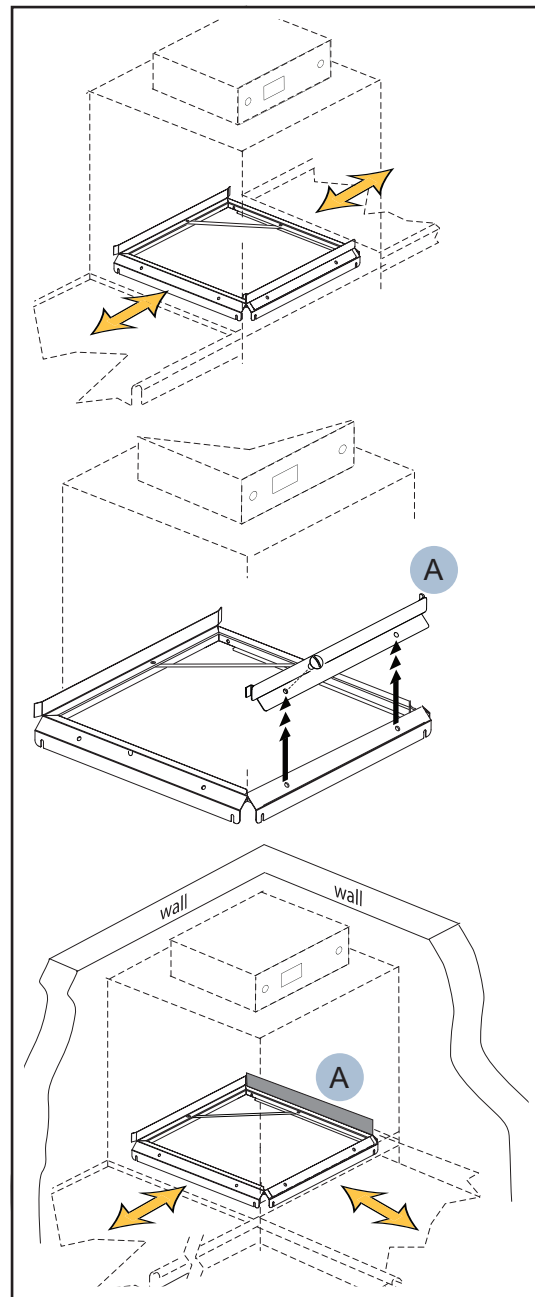


Fig. 4 - Rack Guide (A) Relocation

Champion Industries In the USA:
3765 Champion Blvd, Winston-Salem, NC 27105
Tel: (800) 532-8591 Fax: (336) 661-1979
www.championindustries.com

Moyer Diebel In Canada:
2674 N. Service Rd., Jordan Station, Ontario, Canada L0R1S0
Tel: (905) 562-4195 Fax: (905) 562-5422
www.championindustries.com/1canada

P/N 117961 rev. -

*Due to an ongoing value analysis program at
Champion and Moyer Diebel, specifications contained
in this catalog are subject to change without notice.*

5/25