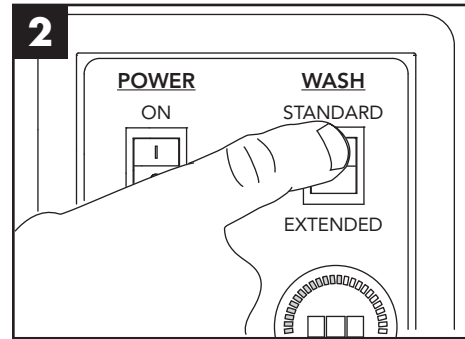
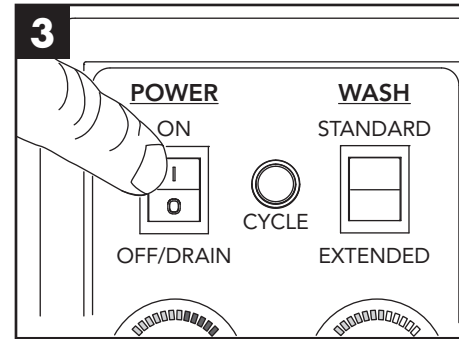


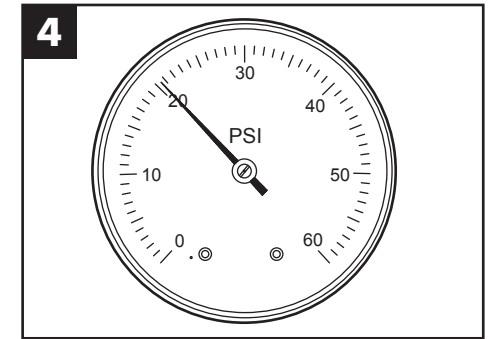
Check chemical levels in containers.



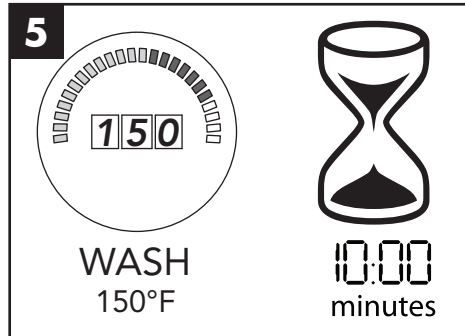
Close hood & select wash mode (*Standard or Extended*).



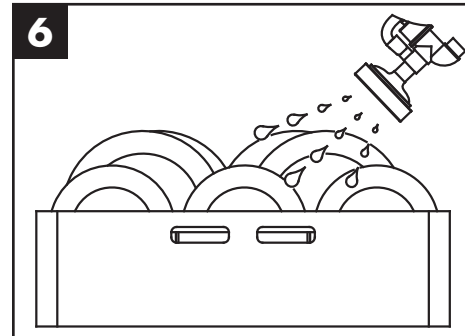
Press power switch to ON position, machine fills.



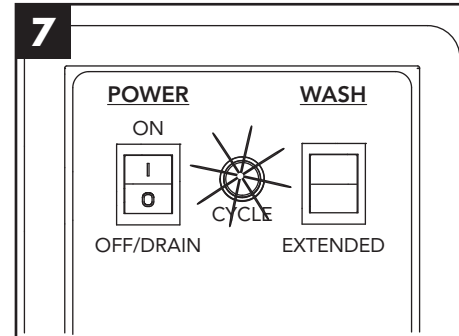
Check pressure gauge & make sure reading is 20-22 PSI.



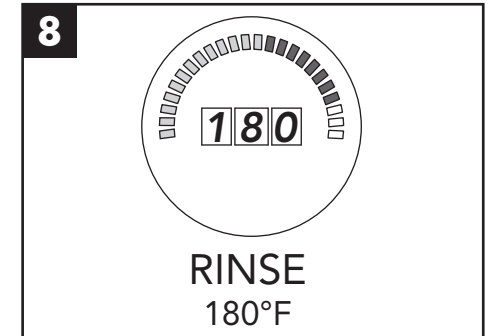
Wait 10 minutes for the display to indicate 150°F/66°C.



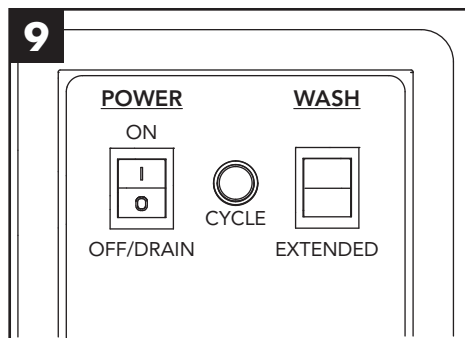
Prescrap & load wares into dish racks. Wash one rack at a time.



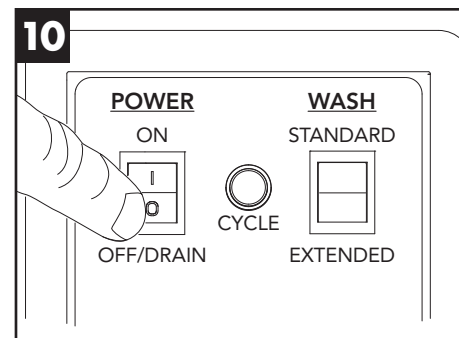
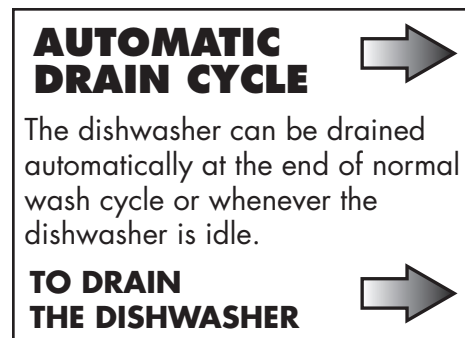
Load the dish rack & close the hood. The green cycle light illuminates & the timed cycle starts automatically.



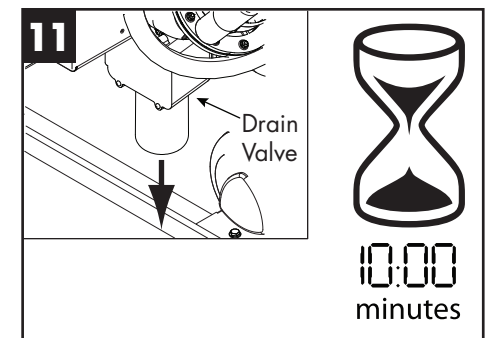
The final rinse water temperature display must indicate a minimum of 180°F/82°C during the final rinse.



When the green cycle goes out, remove the dish rack of clean wares.

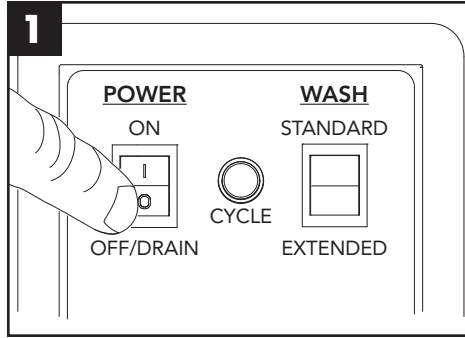


Push the power switch to the OFF/DRAIN position. The cycle light will not come on.

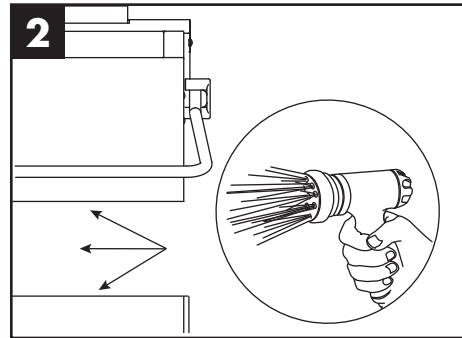


The automatic drain valve opens for 10 minutes to drain the machine.

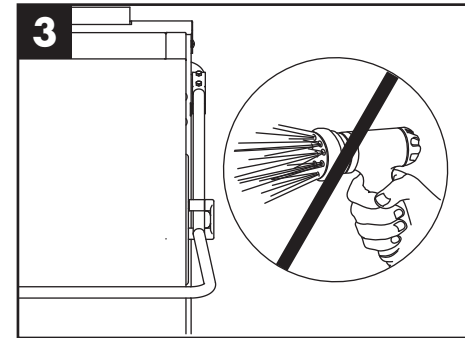
Every 2 hours and at the end of the day



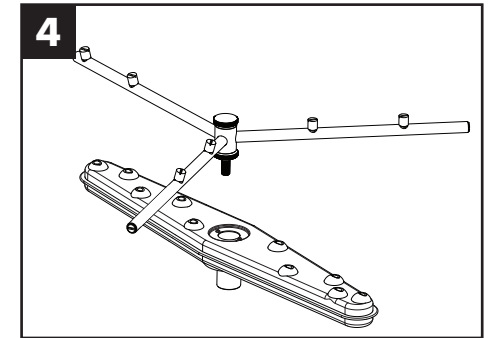
1 Push the power switch to the OFF/DRAIN position to drain.



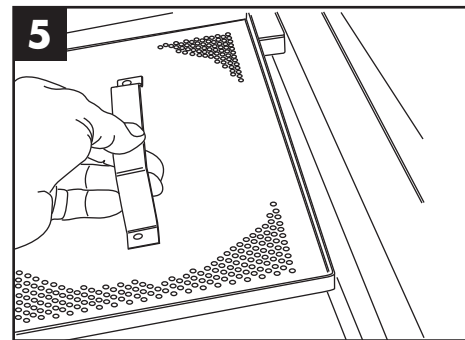
2 Spray the interior of the machine with fresh clean water.



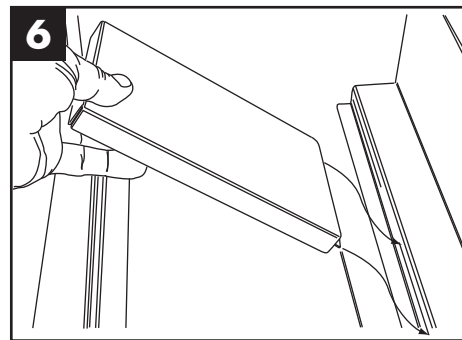
3 DO NOT spray the exterior of the machine with water.



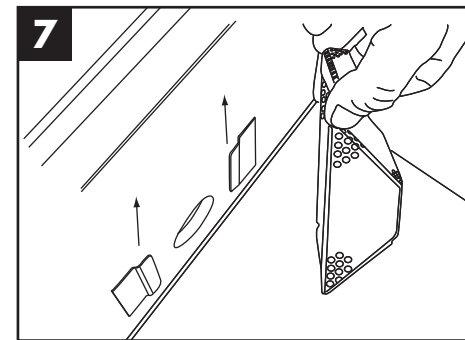
4 Remove the upper & lower spray arms and flush clean.



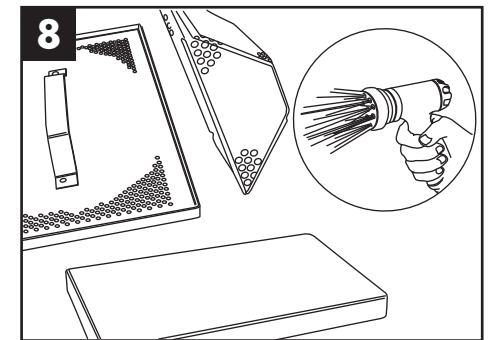
5 Remove the scrap screens from the machine.



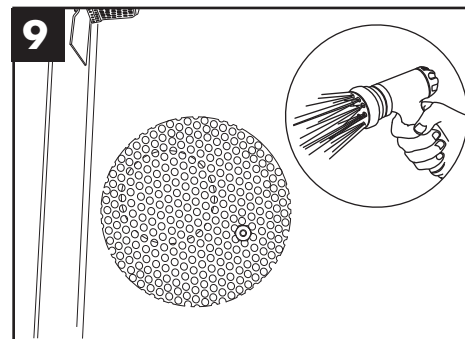
6 Remove the scrap screen support filler plate.



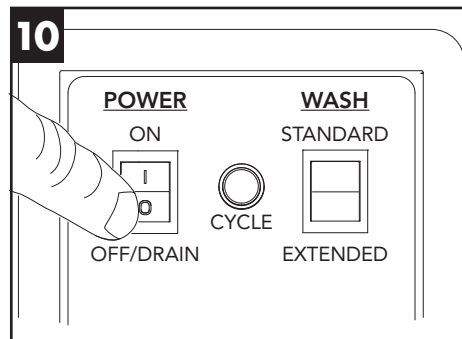
7 Remove the pump suction screen.



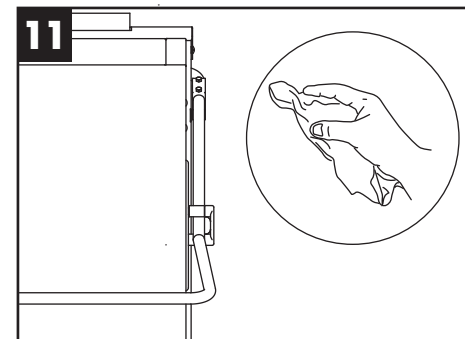
8 Back flush the screens and plate in a remote sink. DO NOT strike the screens against hard objects.



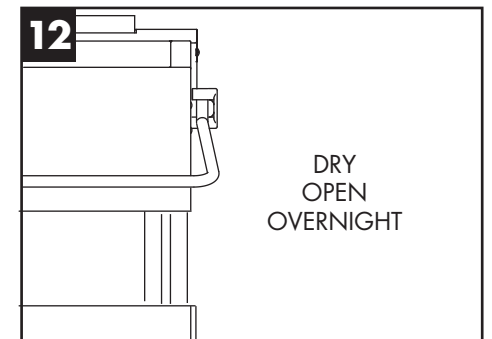
9 Clean the round drain screen & flush the bottom of the tank.



10 Push the power switch ON & immediately to the OFF/DRAIN position to drain.



11 Wipe the exterior with mild detergent and dry with soft cloth.



12 Reassemble machine and leave hood open to aid in overnight drying.