

# Champion®

The Dishwashing Machine Specialists

Project \_\_\_\_\_  
Item No. \_\_\_\_\_  
Quantity \_\_\_\_\_

PRO SERIES RACK CONVEYOR

## STANDARD FEATURES

- **NEW Two-Tank Ventless Heat Recovery** Technology
- **No** Type II exhaust **hood** required
- **Saves** up to **13kW** during operation
- **Less than 70° conditioned air** back into the dish room
- Patent Pending modulation valve pressure system
- **NEW** cOS 2.0 Advanced Operating System
- Perpetual rack advance system, with intuitive jam alert, and drive protection
- Proportional rinse, delivering unmatched total ware coverage, utilizing digital pattern cloning, stainless steel nozzles
- 348 racks per hour
- 100 GPH with energy sentinel (idle pump shut-off)
- Top Mounted Prodigy series HMI User Interface
- Proactive maintenance interface, self-diagnostics, problem recognition, with repair recommendation, from HMI touch screen
- Programmable machine dwell with automatic rack alignment into the optimal wash zone
- **Automatic drain valve Exclusive!**
- Single-piece hood design
- Single-piece stainless steel upper and lower wash arm manifolds
- 20" standard vertical clearance which accommodates 18" x 26" sheet pans
- Full 180° opening leak proof insulated hinged access doors
- Stainless steel heavy gauge construction including base, legs and feet
- Enclosure panels (front and sides)
- Factory Authorized Start-up
- **Made in America**



## PRO SERIES

### 64 PRO VHR Electric

Two-Tank Ventless Heat Recovery  
High Temperature Rack Conveyor  
Dishwashing Machine



*Photo is for general visual representation only. Please refer to specifications for the latest detailed product information.*

## SPECIFIER STATEMENT

Specified unit will be Champion Model 64 PRO VHR Series Two-Tank Ventless Heat Recovery high temperature rack conveyor dishwashing machine. Features top mounted Prodigy HMI user interface controls with proactive maintenance software, proportional rinse, using only 100 GPH, built-in 21 kW booster, progressive anti-jam drive system, energy sentinel (idle pump shut-off), 348 racks per hour, single-piece hood design, single-piece stainless steel upper & lower wash arms manifolds, full 180° opening leak proof insulated hinged access doors. 1 year parts and labor warranty.

Champion Industries, Inc.  
3765 Champion Blvd., Winston-Salem, NC 27105  
Tel: 336/661-1556 Fax: 336/661-1979  
[www.championindustries.com](http://www.championindustries.com)

# PRO SERIES

## 64 PRO VHR Electric

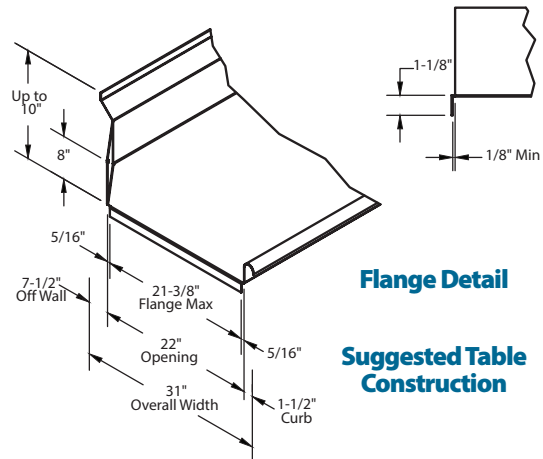
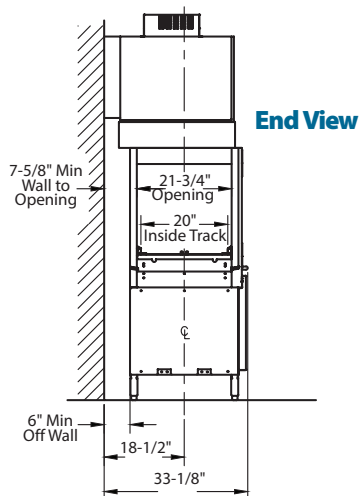
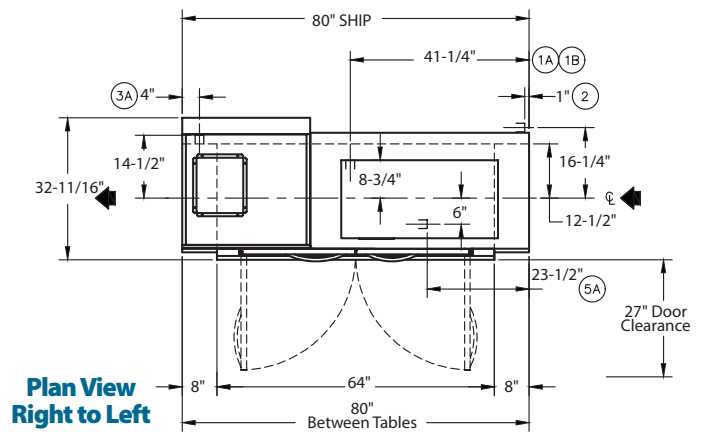
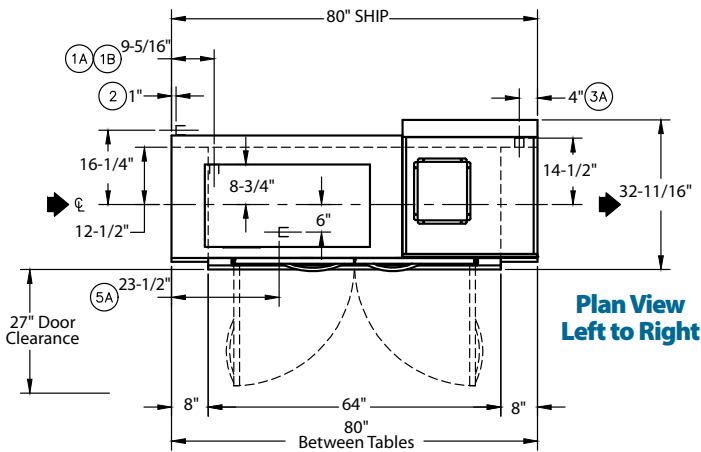
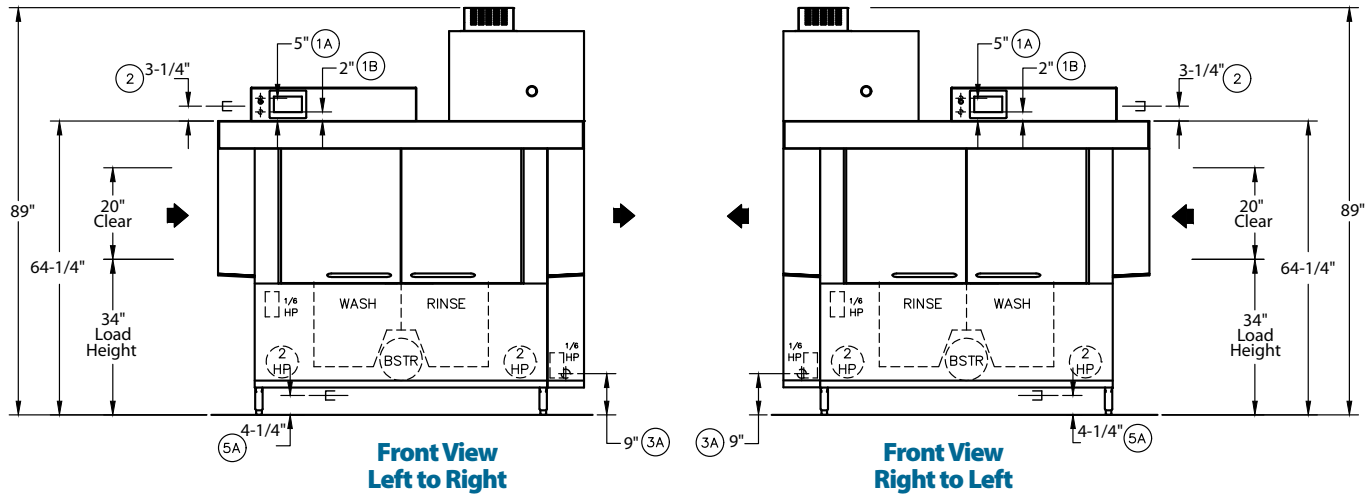
Two-Tank Ventless Heat Recovery  
High Temperature Rack Conveyor  
Dishwashing Machine

# Champion®

The Dishwashing Machine Specialists

**MODEL 64 PRO VHR** Shipping weight crated: Machine only: 1,065

Dimensions shown in inches [mm]



Due to an ongoing value analysis program at Champion, specifications contained in this catalog are subject to change without notice.

Champion Industries, Inc., 3765 Champion Blvd., Winston-Salem, NC 27105 • 336/661-1556 • Fax: 336/661-1979 • www.championindustries.com

# PRO SERIES

## 64 PRO VHR Electric

Two-Tank Ventless Heat Recovery  
High Temperature Rack Conveyor  
Dishwashing Machine

# Champion®

The Dishwashing Machine Specialists

Utilities	
<b>1</b>	<b>Electrical Connection</b> <b>A</b> Machine electrical connection (to include tank heat) <b>B</b> Booster electrical connection
<b>2</b>	<b>Hot Water</b> Tank fill 3/4" NPT; 110° incoming water
<b>3</b>	<b>Cold Water</b> Booster connection 1/2" NPT, minimum 50° at 40 psi
<b>5</b>	<b>Drain</b> Connection 1-1/4" NPT

**Warning:** Plumbing and electrical connections should be made by qualified personnel who will observe all the applicable plumbing, sanitary, safety codes and the National Electrical Code.

**Note:** Water Hammer Arrestor (meeting ASSE-1010 standard or equivalent) to be supplied (by others) in common water supply line at service connection.

**Plumbing Notes:** Because of the variation in house-supplied steam and water pressures, steam and water pressure regulating valves (PRVs) may be needed. (Water PRV is standard on machines with booster.) The PRVs can either be purchased from Champion or obtained locally.

**Venting Notes:** The Ventless feature is subject to local codes for ventilation requirements

**Optional Drain Tempering:** 1/2" NPT cold water connection required. 1/2" NPT drain connection from back flow preventer to house drain. (FIELD INSTALLED and PLUMBED).

64 PRO VHR Electric Heat (1A)			
Electrical Specifications	Rated Amps	Minimum Supply Circuit Ampacity	Maximum Overcurrent Protective Device
208/60/3	116	150	150
240/60/3	106	150	150
480/60/3	53	70	70
575/60/3	41	60	60

64 PRO Electric 21 kW Booster (1B)			
Electrical Specifications	Rated Amps	Minimum Supply Circuit Ampacity	Maximum Overcurrent Protective Device
208/60/3	59	80	80
240/60/3	51	70	70
480/60/3	26	35	35
575/60/3	22	30	30

## SPECIFICATIONS

### Capacity

Racks per hr. (NSF rated) . . . . .	348
Wash tank (US gal.) . . . . .	17
Standard conveyor speed (ft/min.) . . . . .	9.55
Pot/Pan Mode conveyor speed (ft/min.) . . . . .	4.6
Power Rinse (US gal.) . . . . .	17

### Motor Horsepower

Drive . . . . .	1/6
Wash . . . . .	2
Power Rinse . . . . .	2

### Water Consumption

US Gal. per hr. (max. use) . . . . .	100
US Gal. per rack . . . . .	0.29

### Heating

Wash Tank Heat, electric (kW) . . . . .	15
Electric booster (built-in) (kW supplied for 70°F rise) . . . . .	21
Power Rinse (kW) . . . . .	10

*Booster heaters completely inter plumbed, controls are interwired*

### Standard 20" x 20" rack complement

Peg . . . . .	1
Flat . . . . .	1

# PRO SERIES

PRO SERIES RACK CONVEYOR

## 64 PRO VHR Electric

Two-Tank Ventless Heat Recovery  
High Temperature Rack Conveyor  
Dishwashing Machine

# Champion®

The Dishwashing Machine Specialists

### OPTIONS & ACCESSORIES

- 24" Sideload
- 30" Sideload (accepts sheet pans)
- Racks:
  - Peg
  - Flat racks
  - Sheetpan
- Table limit switch, unmounted (recommended on all rack conveyor installations) (unmounted)
- Water pressure regulating valve (unmounted) (standard with booster)
- Water hammer kit (unmounted)
- Drain tempering kit (unmounted)
- Model PRO90 Unloader (90° Corner Conveyor Table)
- Model RCT 64 or RCT 84 Roller Conveyor Table (See factory for custom length)
- ION scale prevention device (unmounted)
- DirectLink — internet connectivity solution allowing remote-in factory service support
- DirectLink Plus — standard DirectLink with additional data storage and customized web portal to download temperature data



### NEW PRO90

90° Corner Conveyor Table (shown)  
Unloader only



**Cantilever  
Sideload**  
(no hood)



### Model RCT 64 or RCT 84

Roller  
Conveyor Table

Champion Industries, Inc.,  
3765 Champion Blvd., NC 27105  
336/661-1556 • Fax: 336/661-1979  
ChampionIndustries.com

4/22

an Ali Group Company



The Spirit of Excellence