

Champion®

The Dishwashing Machine Specialists

Project _____
Item No. _____
Quantity _____

EUCCW SERIES UPRIGHT CONVEYORS

STANDARD FEATURES

- **NEW** Factory authorized startup
- **ENERGY STAR®** Qualified
- **Exclusive Dual Rinse Technology**
- All-purpose 29" wide peg belt
- Dish capacities up to 15,027 dishes per hour (NSF Certified)
- Automatic tank fill
- Chemical dispensing equipment connection provisions
- Choice of tank heat: electric, steam coils or direct steam injectors
- Common hot water connection
- Common drain connection
- Common electric connection (separate connection required for optional electric booster and blower-dryer)
- One piece stainless steel wash/rinse manifold system, easy to remove
- Door safety switch
- Electric eye energy sentinel (idle pump shut-off)
- Easy-to-reach top-mounted controls
- Heavy-gauge stainless construction
- Low-water tank heat protection
- Push-button start-stop station – load end
- Recirculating flushing nozzles – load end with prewash
- Rinse saver device
- Conveyor shut-off shelf – unload end
- Stainless steel enclosure panels – front & ends
- Vent fan control connection provided

OPTIONAL WORLD CLASS FEATURES

- **Heat Recovery** – redirects lost steam to heat using less energy

*The DualRinse feature offers the **Lowest Water/Utility/Chemical Consumption** as low as 57 GPH usage while circulating as much as 400 gallons of water for **Consistently Good Results***

EUCCW SERIES

Upright 29" Conveyor
Dual Rinse Dishwashing Machine



Photo is for general visual representation only. Please refer to specifications for the latest detailed product information.



SPECIFIER STATEMENT

Specified unit will be Champion model EUCCW4, EUCCW6 or EUCCW8 upright 29" conveyor water saver dishwashing machine.

Features automatic tank fill, chemical dispensing connection provisions, common water, drain and electrical connections, door safety switch, low water tank heat protection, rinse saver.

1 year parts and labor warranty.



2674 N. Service Road,
Jordan Station, Ontario, Canada L0R 1S0
Tel: 905-562-4195 Fax: 905/562-4618

Champion Industries, Inc.
3765 Champion Boulevard, Winston-Salem, NC 27105 Tel:
336/661-1556 Fax: 336/661-1979
www.championindustries.com



EUCCW SERIES

Upright 29" Conveyor
Dual Rinse
Dishwashing Machine

Champion®

The Dishwashing Machine Specialists

MODULAR SECTIONS: Right to Left Operation

Dimensions shown in inches and [millimeters]

EUCCW4

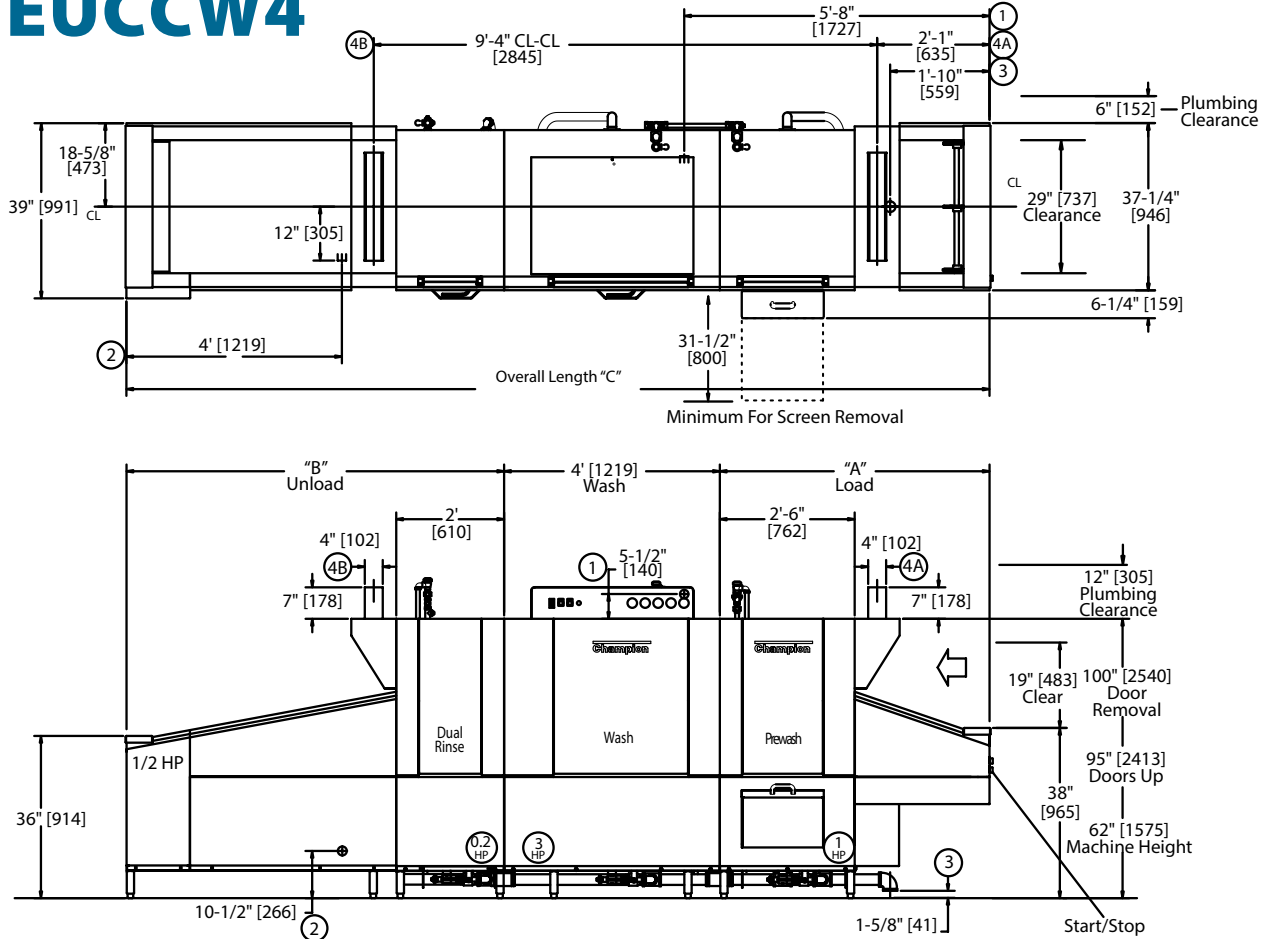


TABLE A - Machine Connection

Machine Only - Electric Heat			
Elec. Specs.	Rated Amps	Minimum Supply Ckt. Conductor Ampacity	Maximum Overcurrent Protective Device
208/60/3	171	200	200
240/60/3	149	175	175
480/60/3	74	90	90

Machine-steam			
Elec. Specs.	Rated Amps	Minimum Supply Ckt. Conductor Ampacity	Maximum Overcurrent Protective Device
208/60/3	21	25	25
240/60/3	18	25	25
480/60/3	10	15	15

Notes:

- Load Section (A) Standard 5', contains 30" Prewash
- Prewash also available in a 48" HD section
- Non-standard load section available in 12" increments
- Minimum load length 5' (includes 30" prewash)
- Unload Section (B) Standard 5 ft contains 24" Aux.
- Rinse and 36" belt, available in 12" increments
- Built in electric booster requires a 5' minimum unload
- Built in steam booster requires a minimum 6' unload
- Blow dryer section adds 4' to overall length of machine

TABLE B - Booster Connection

40°F/22°C Rise - 10kW Electric Built-in Booster			
Elec. Specs.	Rated Amps	Minimum Supply Ckt. Conductor Ampacity	Maximum Overcurrent Protective Device
208/60/3	28	35	35
240/60/3	24	30	30
480/60/3	12	15	15

70°F/39°C Rise - 18kW Electric Built-in Booster			
Elec. Specs.	Rated Amps	Minimum Supply Ckt. Conductor Ampacity	Maximum Overcurrent Protective Device
208/60/3	50	60	60
240/60/3	44	50	50
480/60/3	22	30	30

Contact Factory for additional voltages.

Due to an ongoing value analysis program at Champion, specifications contained in this catalog are subject to change without notice.

Champion Industries, Inc., 3765 Champion Boulevard, Winston-Salem, NC 27105 • 336/661-1556 • Fax: 336/661-1979 • www.championindustries.com
2674 N. Service Road, Jordan Station, Ontario, Canada L0R 1S0 • 905/562-4195 • Fax: 905/562-4618

EUCCW SERIES

Upright 29" Conveyor
Dual Rinse
Dishwashing Machine

Champion®

The Dishwashing Machine Specialists

MODULAR SECTIONS: Right to Left Operation

Dimensions shown in inches and [millimeters]

EUCCW6

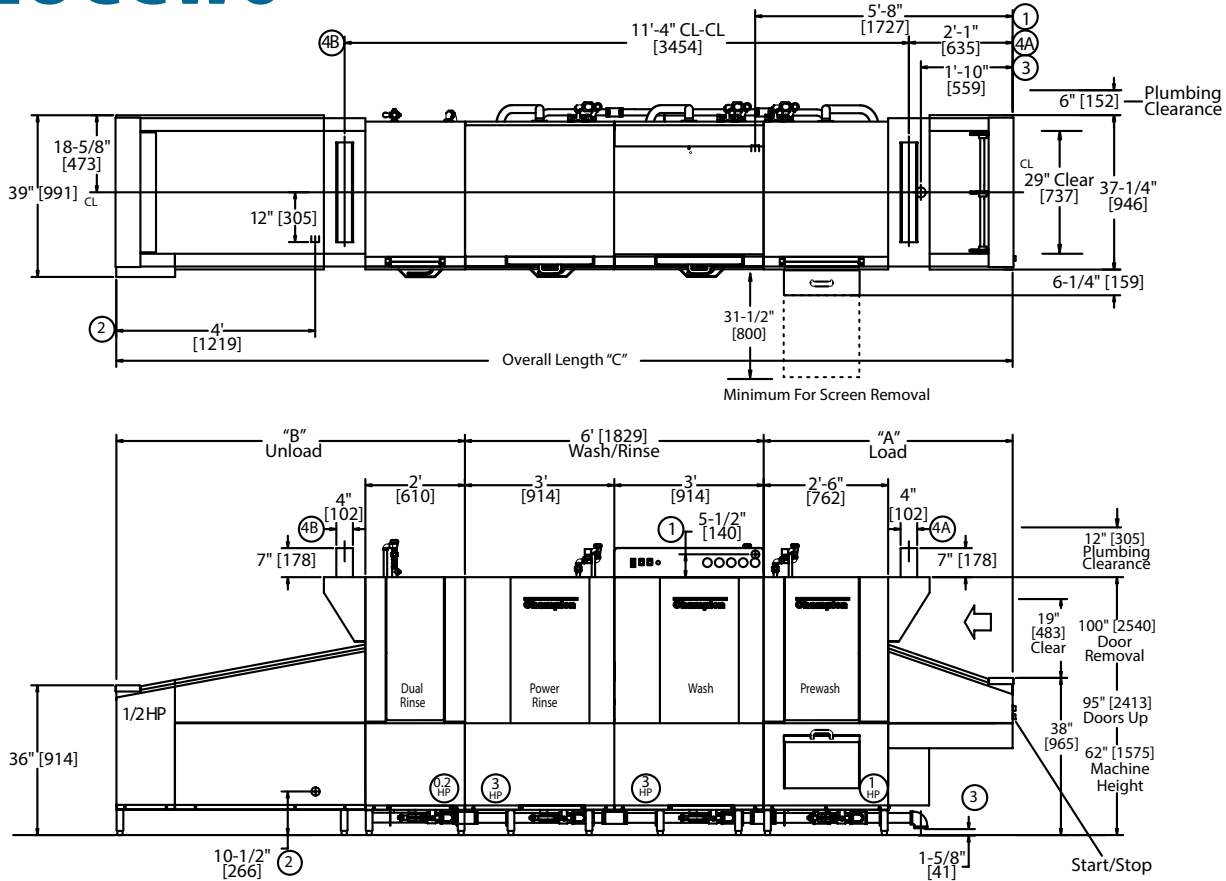


TABLE A - Machine Connection

Machine Only - Electric Heat			
Elec. Specs.	Rated Amps	Minimum Supply Ckt. Conductor Ampacity	Maximum Overcurrent Protective Device
208/60/3	183	250	250
240/60/3	158	200	200
480/60/3	80	100	100

Machine-steam			
Elec. Specs.	Rated Amps	Minimum Supply Ckt. Conductor Ampacity	Maximum Overcurrent Protective Device
208/60/3	29	40	40
240/60/3	26	35	35
480/60/3	14	20	20

Notes:

- Load Section (A) Standard 5', contains 30" Prewash
- Prewash also available in a 48" HD section
- Non-standard load section available in 12" increments
- Minimum load length 5' (includes 30" prewash)
- Unload Section (B) Standard 5 ft contains 24" Aux.
- Rinse and 36" belt, available in 12" increments
- Built in electric booster requires a 5' minimum unload
- Built in steam booster requires a minimum 6' unload
- Blow dryer section adds 4' to overall length of machine

TABLE B - Booster Connection

40°F/22°C Rise - 10kW Electric Built-in Booster			
Elec. Specs.	Rated Amps	Minimum Supply Ckt. Conductor Ampacity	Maximum Overcurrent Protective Device
208/60/3	28	35	35
240/60/3	24	30	30
480/60/3	12	15	15

70°F/39°C Rise - 18kW Electric Built-in Booster			
Elec. Specs.	Rated Amps	Minimum Supply Ckt. Conductor Ampacity	Maximum Overcurrent Protective Device
208/60/3	50	60	60
240/60/3	44	50	50
480/60/3	22	30	30

Contact Factory for additional voltages.

Due to an ongoing value analysis program at Champion, specifications contained in this catalog are subject to change without notice.

Champion Industries, Inc., 3765 Champion Boulevard, Winston-Salem, NC 27105 • 336/661-1556 • Fax: 336/661-1979 • www.championindustries.com
2674 N. Service Road, Jordan Station, Ontario, Canada L0R 1S0 • 905/562-4195 • Fax: 905/562-4618

EUCCW SERIES

Upright 29" Conveyor
Dual Rinse
Dishwashing Machine

Champion®

The Dishwashing Machine Specialists

MODULAR SECTIONS: Right to Left Operation

Dimensions shown in inches and [millimeters]

EUCCW8

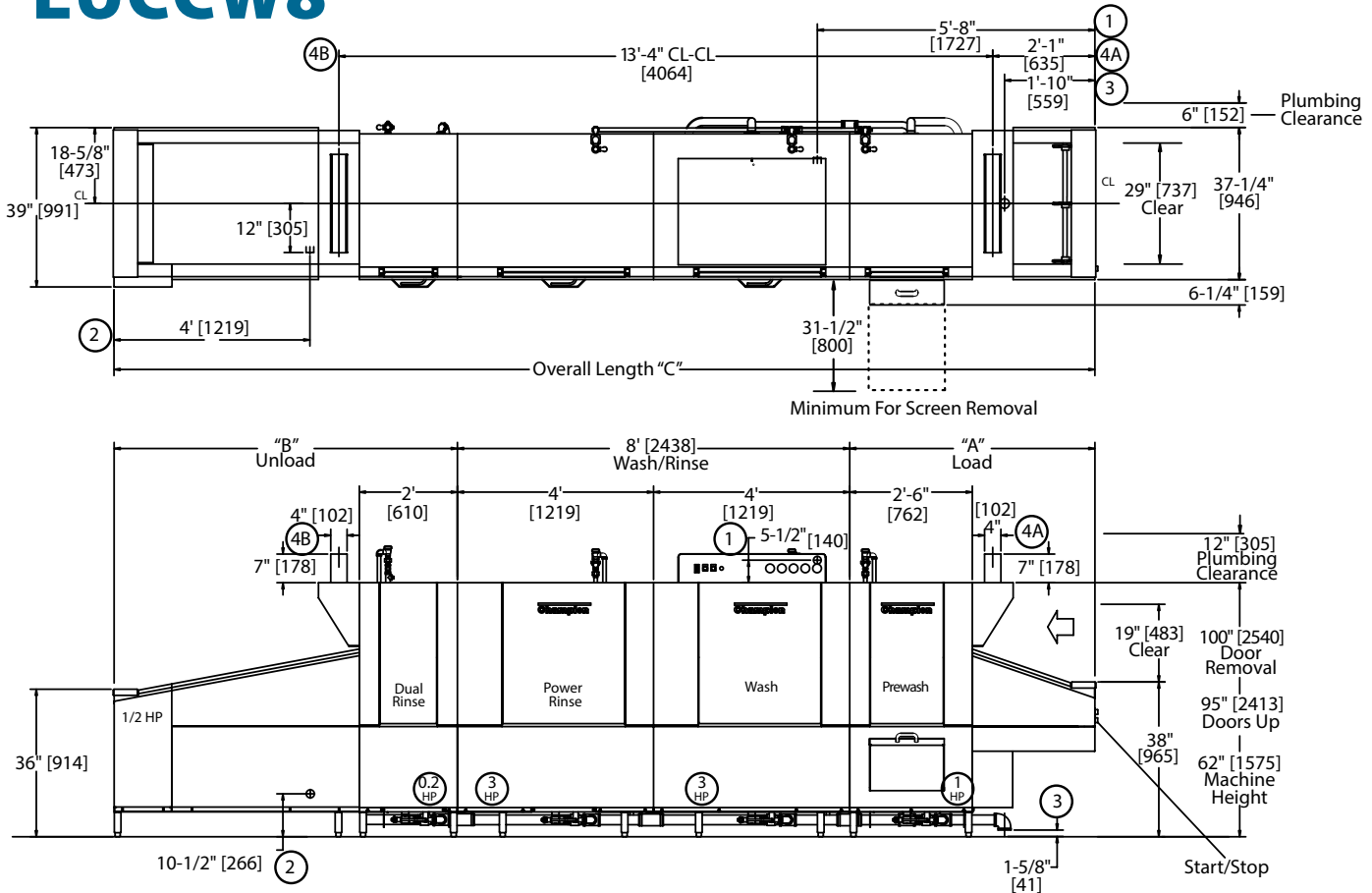


TABLE A - Machine Connection

Machine Only - Electric Heat			
Elec. Specs.	Rated Amps	Minimum Supply Ckt. Conductor Ampacity	Minimum Overcurrent Protective Device
208/60/3	183	250	250
240/60/3	158	200	200
480/60/3	80	100	100

Machine-steam			
Elec. Specs.	Rated Amps	Minimum Supply Ckt. Conductor Ampacity	Minimum Overcurrent Protective Device
208/60/3	29	40	40
240/60/3	26	35	35
480/60/3	14	20	20

TABLE B - Booster Connection

40°F/22°C Rise - 10 kW Electric built-in booster			
Elec. Specs.	Rated Amps	Minimum Supply Ckt. Conductor Ampacity	Minimum Overcurrent Protective Device
208/60/3	28	35	35
240/60/3	24	30	30
480/60/3	12	15	15

70°F/39°C Rise - 18kW Electric built-in booster			
Elec. Specs.	Rated Amps	Minimum Supply Ckt. Conductor Ampacity	Minimum Overcurrent Protective Device
208/60/3	50	60	60
240/60/3	44	50	50
480/60/3	22	30	30

Notes:

- Load Section (A) Standard 5', contains 30" Prewash
- Prewash also available in a 48" HD section
- Non-standard load section available in 12" increments
- Minimum load length 5' (includes 30" prewash)
- Unload Section (B) Standard 5 ft contains 24" Aux.
- Rinse and 36" belt, available in 12" increments
- Built in electric booster requires a 5' minimum unload
- Built in steam booster requires a minimum 6' unload
- Blow dryer section adds 4' to overall length of machine

Contact Factory for additional voltages.

Due to an ongoing value analysis program at Champion, specifications contained in this catalog are subject to change without notice.

Champion Industries, Inc., 3765 Champion Boulevard, Winston-Salem, NC 27105 • 336/661-1556 • Fax: 336/661-1979 • www.championindustries.com
2674 N. Service Road, Jordan Station, Ontario, Canada L0R 1S0 • 905/562-4195 • Fax: 905/562-4618

Champion®

The Dishwashing Machine Specialists

EUCCW SERIES

Upright 29" Conveyor
Dual Rinse
Dishwashing Machine

Shipping weight crated: **150 lbs./ft.[68kg./m.]**
Height with doors up: **95"**
Height to remove doors: **100"**

SPECIFICATIONS

Capacities	EUCCW4	EUCCW6	EUCCW8
Dishes per hr. (NSF rated)	9,965	13,445	15,027
Conveyor speed (ft./min.)	6.3	8.5	9.5

Motor horsepower

	EUCCW4	EUCCW6	EUCCW8
Drive	1/2 Hp	1/2 Hp	1/2 Hp
Prewash 30" [762]	1 Hp	1 Hp	1 Hp
Prewash 48" [1219]	3 Hp	3 Hp	3 Hp
Wash	3 Hp	3 Hp	3 Hp
Power Rinse*	N/A	3 Hp	3 Hp
Auxiliary Rinse	1/5 Hp	1/5 Hp	1/5 Hp

Water consumption

Gal. per hr. (max. use)	EUCCW4	EUCCW6	EUCCW8
	58	57	58

Temperatures °F

	EUCCW4	EUCCW6	EUCCW8
Wash (min.)	160	150	150
Power Rinse (min.)*	N/A	160	160
Auxiliary Rinse (min.)	165	165	165
Final rinse (min.)	180	180	180

Heating

Tank heat	Steam	Electric
Wash tank	125 lbs./hr.	25 kW
Wash tank (EUCCW4)	225 lbs./hr.	45 kW
Rinse tank *	100 lbs./hr.	20 kW
Auxiliary rinse	50 lbs./hr.	10 kW
Electric booster (kW required for 40°F rise)	10	10
Electric booster (kW required for 70°F rise)	18	18
Steam booster (lbs./hr. required for 40°F rise)	50	50
Steam booster (lbs./hr. required for 70°F rise)	90	90

Venting

Minimum CFM, load end	300
Minimum CFM, unload end	800
Minimum CFM, unload end, with heat recovery	400

*EUCCW4 has no power rinse tank

Booster connections may vary. Contact the Factory.

Standard Voltages (Specify choice): 208/60/3, 240/60/3, and 480/60/3. Available in 3-phase only. For non-standard 3-phase voltages, contact the Factory.

Plumbing Notes Because of the variation in house-supplied water pressure, a water pressure regulating valve (PRV) is needed (water PRV is standard with a booster). Steam PRV's may be required for pressure higher than 30 psi. The PRVs can either be purchased from Champion or obtained locally.

Utilities EUCCW4

1 Electrical Connection A Machine connection (see table A) B Booster connection (see table A)
2 Hot Water 3/4" NPT 180°F hot water connection. (For machine without built-in booster)
3 Drain 2" NPT connection, 62 gpm max flow rate
4 Vents A Load end: 300 CFM 1/4" S.P. B Unload end: 800 CFM 1/4" S.P. With blower-dryer, increase room ventilation by 600 CFM.

Utilities EUCCW6

1 Electrical Connection Contact factory for specific machine electrical requirements NOTE: Electric booster connection – contact Factory
2 Hot Water 3/4" NPT 180°F hot water connection. (For machine without built-in booster)
3 Drain 2" NPT connection, 62 gpm max flow rate
4 Vents A Load end: 300 CFM 1/4" S.P. B Unload end: 800 CFM 1/4" S.P. With blower-dryer, increase room ventilation by 600 CFM.

Utilities EUCCW8

1 Electrical Connection Contact factory for specific machine electrical requirements NOTE: Electric booster connection – contact Factory
2 Hot Water 3/4" NPT 180°F hot water connection. (For machine without built-in booster)
3 Drain 2" NPT connection, 62 gpm max flow rate
4 Vents A Load end: 300 CFM 1/4" S.P. B Unload end: 800 CFM 1/4" S.P. With blower-dryer, increase room ventilation by 600 CFM.

Warning Plumbing and electrical connections should be made by qualified personnel who will observe all the applicable plumbing, sanitary, safety codes and the National Electrical Code.

Note Water Hammer Arrestor (meeting ASSE-1010 standard or equivalent) to be supplied (by others) in common water supply line at service connection.

Venting Notes

Fabricated duct size: 3-7/8" x 23-7/8" (outside dimensions)

Due to an ongoing value analysis program at Champion, specifications contained in this catalog are subject to change without notice.

Champion Industries, Inc., 3765 Champion Boulevard, Winston-Salem, NC 27105 • 336/661-1556 • Fax: 336/661-1979 • www.championindustries.com
2674 N. Service Road, Jordan Station, Ontario, Canada L0R 1S0 • 905/562-4195 • Fax: 905/562-4618

EUCCW SERIES

Upright 29" Conveyor
Dual Rinse
Dishwashing Machine

Champion®

The Dishwashing Machine Specialists

Control Panel



Digital Gauges

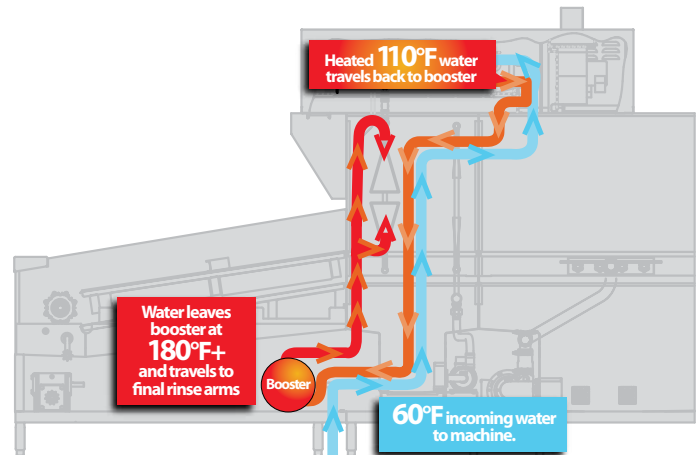


OPTIONS & ACCESSORIES

- Tank heat; choices of electric, steam coil or steam injectors
- Booster Heaters – stainless steel (completely inter-plumbed, controls are inter-wired)
 - Electric: (40°F rise or 70°F rise)
 - Steam: (40°F or 70°F rise)
- 48" Blower Dryer, electric or steam (add 4' to overall length)
- Belts: standard peg belt, flat belt, thermal tray belt, silverware belt, belts with upper cross rods, and other select combination belts
- Start/Stop station, unload end
- Back panels, stainless steel
- Cold water thermostat (for pre-wash)
- External scrap bucket on 48" pre-wash (standard on 30" pre-wash)
- External scrap bucket on wash tank
- Insulated hoods, lower panels
- Motor pumps, 2 or 3 Hp optional in lieu of 1 Hp on pre-wash
- Bumper rail, machine mounted
- Steam pressure regulating valve (unmounted)

Heat Recovery –

Redirects lost steam to heat using less energy.



Back Draft Preventer Required (Supplied and Installed by Others).

- Drain water tempering kit (mounted)
- Insulated hinged door
- Shock arrestor (water)
- Drain interlocks
- Heat Recovery Unit redirects lost steam to heat using less energy
- NEW** Champion ION scale prevention system

Champion[®]

The Dishwashing Machine Specialists

Project _____

Item No. _____

Quantity _____

EBD-48-F BLOWER DRYER

STANDARD FEATURES

- Automatic heat cutoff (when conveyor stops)
- Blower motor, 2-Hp
- Blower-Dryer vent cowl on exit end
- Choice of electric or steam heat
- Control circuit, 120-volt, completely interwired with dishwashing machine controls
- Heavy gauge stainless steel frame and cabinet
- Machine vent connection
- Separate blower-dryer "auto/off" switch
- Thermal overload protection for electric blower-dryer
- 48" hood design

EBD-48-F

Blower-dryer for Flight Conveyor
Dishwashing Machines



SPECIFICATIONS

Motor horsepower	2
Heating	
Electric, (kW)	12
Steam (lbs/hr. required at 15 psi flow pressure)	65

SPECIFIER STATEMENT

Specified unit will be Champion model EBD-48-F blower-dryer for flight conveyor dishwashing machines. Features include automatic heat cut-off, 2 Hp blower motor, vent cowl on exit end, separate auto/off switch for blower / dryer.

1 year parts and labor warranty.

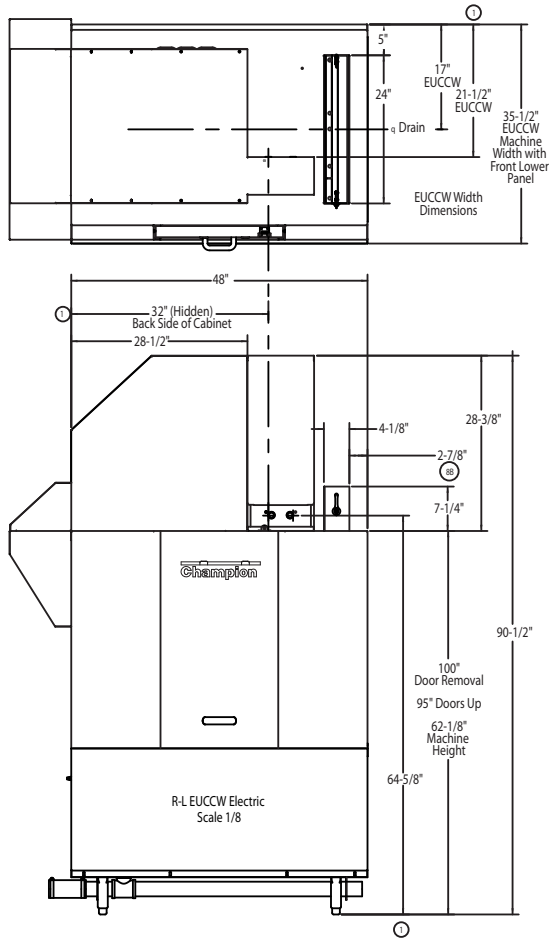
This EBD-48-F catalog sheet is designed to be used in conjunction with the Champion Flight Conveyor Series catalog sheets.

Champion Industries, Inc.
2674 N. Service Road,
Jordan Station, Ontario, Canada L0R 1S0
Tel: 905/562-4195 Fax: 905/562-4618

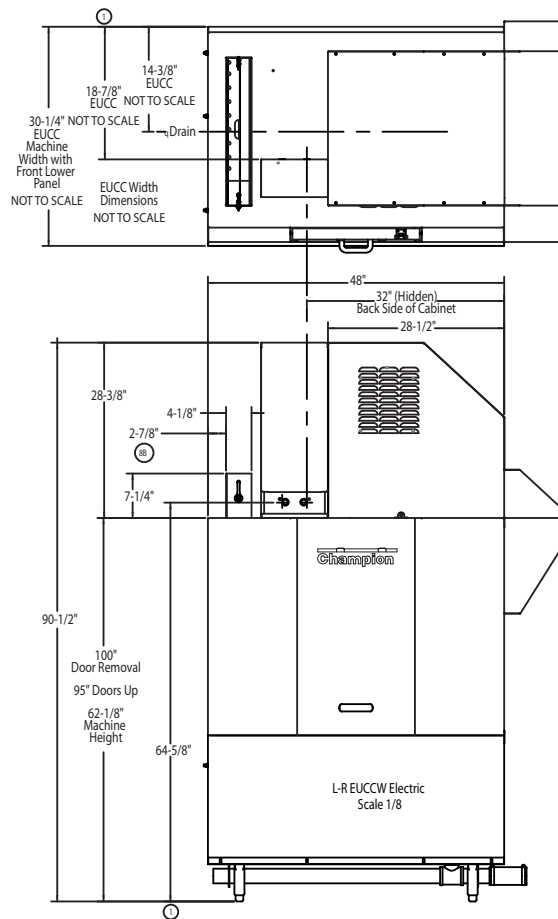
Champion Industries, Inc.
3765 Champion Blvd., Winston-Salem, NC 27105
Tel: 336/661-1556 Fax: 336/661-1979
www.championindustries.com

EBD-48-F Blower Dryer For Flight Machine Electric

Right-to-Left



Left-to-Right



Model EBD Electric Heat

Voltage	Rated Amps	Minimum Supply Circuit Ampacity	Maximum Overcurrent Protective Device (Nontime delay)
208/60/3	40	50	50
240/60/3	35	45	45
480/60/3	17	25	25
575/60/3	15	20	20

EUCC, EUCCW

Utilities

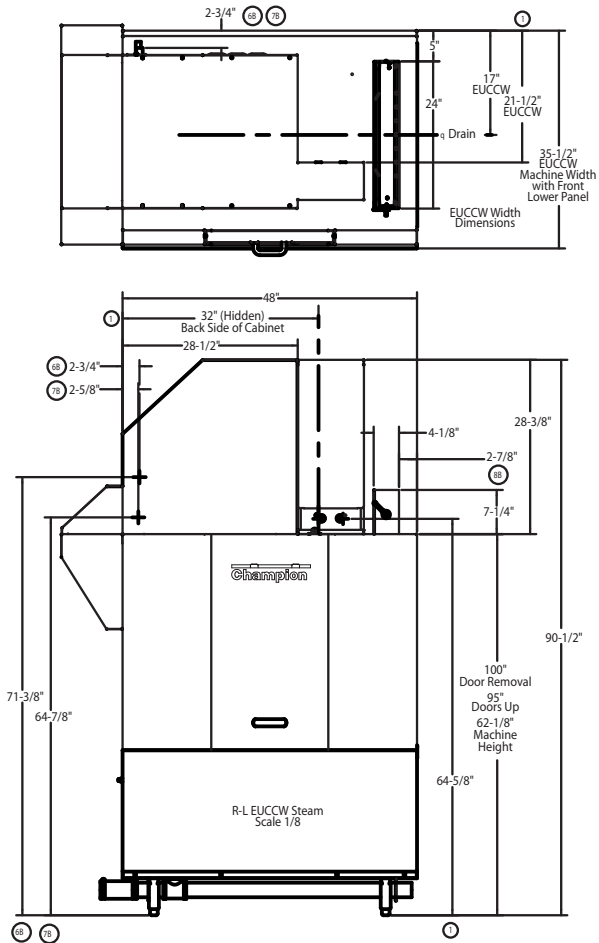
1	Electrical – See chart
8B	Vent Unload 800 CFM 1/4" S.P.

Note: When machine is equipped with blower/dryer system, for normal size dishroom, the dishroom ventilation should be increased by 600 CFM.

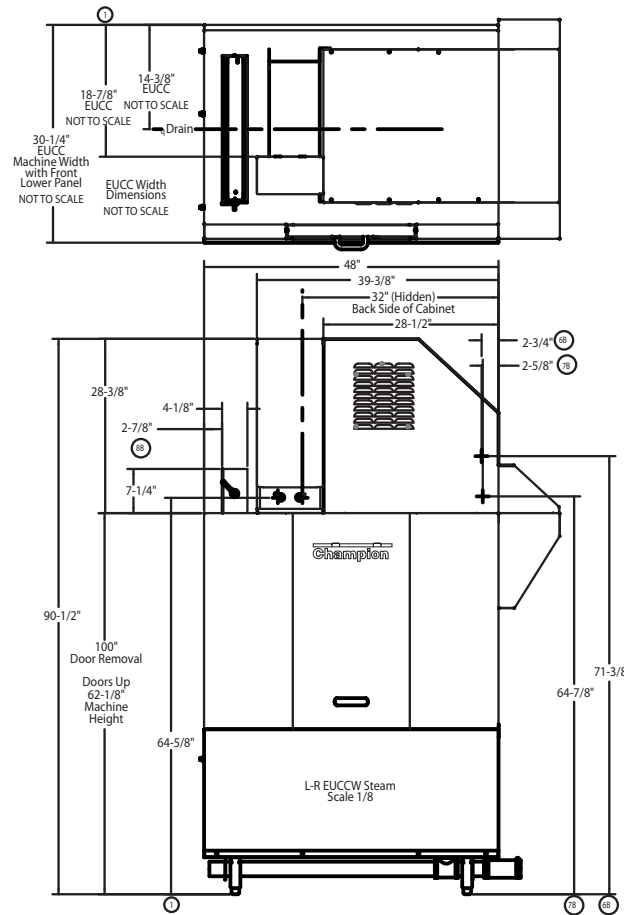
EBD-48-F Blower Dryer For Flight Machine

Steam

Right-to-Left



Left-to-Right



Model EBD Steam Heat

Voltage	Rated Amps	Minimum Supply Circuit Ampacity	Maximum Overcurrent Protective Device (Nontime delay)
208/60/3	7	15	15
240/60/3	6	15	15
480/60/3	3	15	15
575/60/3	3	15	15

Note: When machine is equipped with blower/dryer system, for normal size dishroom, the dishroom ventilation should be increased by 600 CFM.

EUCC, EUCCW

Utilities	
1	Electrical – See chart
6B	Steam 3/4" steam inlet connection 65 lbs./hr. @ 15-30 PSI
7B	Condensate 1/2" return to boiler (no back pressure)
8B	Vent Unload 800 CFM 1/4" S.P.

Notes:

- Blow dryer section adds 4' to overall length of machine