

Champion®

The Dishwashing Machine Specialists

Project _____
Item No. _____
Quantity _____

P5-24 PULPER

STANDARD FEATURES

- Flatware saver
- Flushing valve to pump-motor seal
- Flexible draw latches on hood assembly
- Remote mounted control box and circuit breaker
- Removable, gasketless water extractor door
- Start/stop switch mounted on extractor
- Stainless steel tubular bulletfeet legs
- 1-1/2" total adjustment
- Total stainless steel construction
- Water level control

P5-24

5 Hp - 24" Pulper
Waste Handling System



Photo is for general visual representation only. Please refer to specifications for the latest detailed product information.

OPTIONS & ACCESSORIES

- Anti-vibration feet for quieter operation
- Recirculating pump
- Multiple trough configurations
- Extractor flushing system
- Spray Reel - 30ft unmounted
- Automatic shutdown timer
- Deodorizer injector
- Remote mounted start-stop station (unmounted)
- Multiple trough sizes (9" & 12")



SPECIFIER STATEMENT

Specified unit will be Champion model P5-24 pulper waste handling system.

Features include a standard feed tray, total stainless steel, free-standing close coupled waste handling system with a 24" diameter slurry chamber, 5 Hp grinding motor and 2 Hp extractor motor. Three stationary blocks with four cutting surfaces each, two tool steel rotating shearing blades, large water extractor chamber with removable gasketless door and external drain handle.

1 year parts and labor warranty.

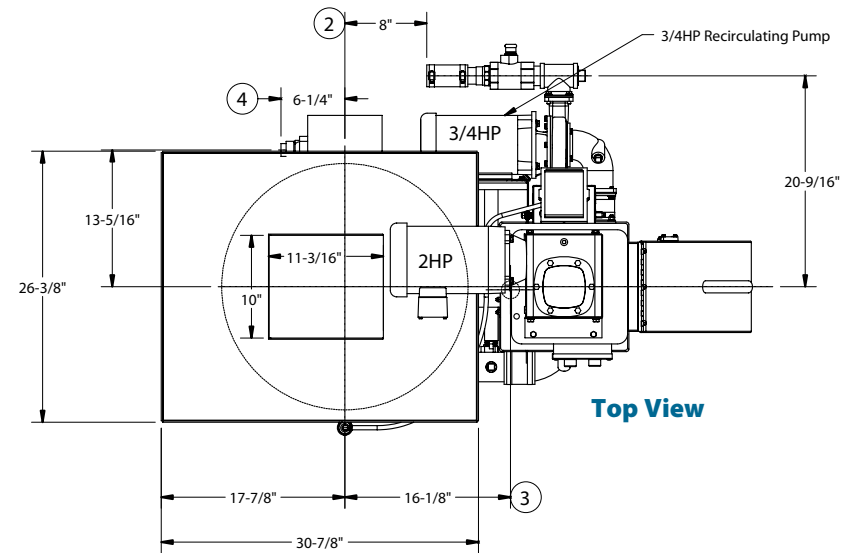
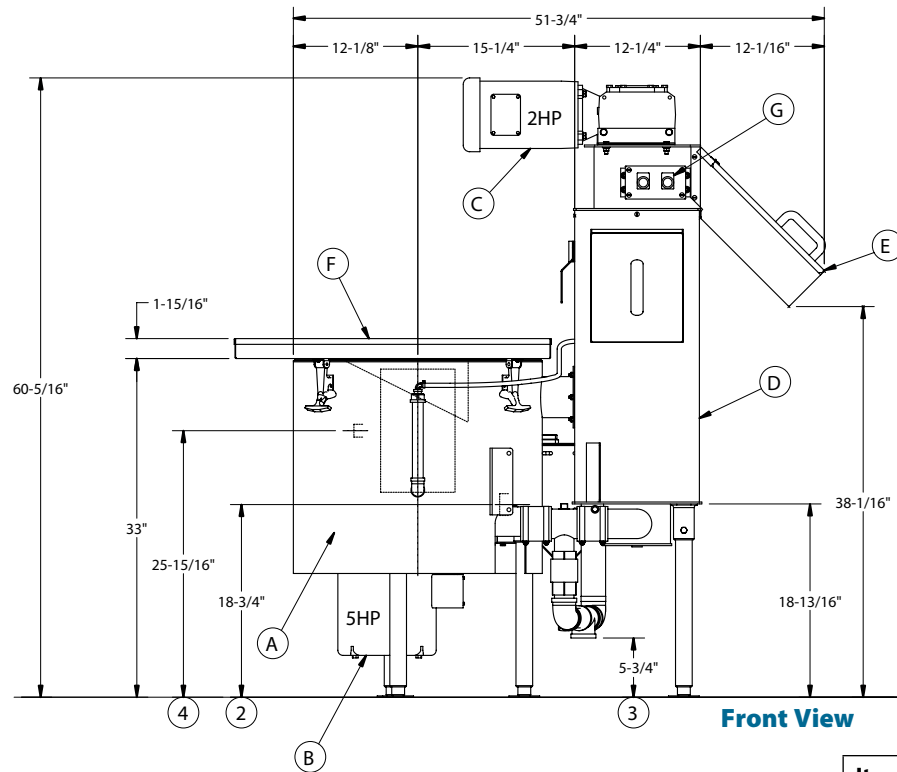
Champion Industries, Inc.
2674 N. Service Road,
Jordan Station, Ontario, Canada L0R 1S0
Tel: 800/263-5798 Fax: 905/562-4618

Champion Industries, Inc.
3765 Champion Blvd., Winston-Salem, NC 27105
Tel: 336/661-1556 Fax: 336/661-1979
www.championindustries.com

P5-24 with Optional Recirculating Pump Mounted on Rear of Water Extractor

Volume crated: **175. ft.**
Shipping weight crated: **800 lbs.**

Dimensions shown in inches



Top View

Utilities	
1	Electrical (see chart)
2	Optional Recirculation Pump
3	Drain 1-1/2" NPT
4	Cold water 1/2" NPT cold water connection

Item	Qty.	Description
A	1	Slurry Chamber 24" dia.
B	1	Motor-Main Drive 5 Hp
C	1	Water Extractor Drive Motor 2 Hp
D	1	Water Extractor
E	1	Discharge Chute
F	1	Scrapping Tray
G	1	Start/Stop Station

SPECIFICATIONS

Capacities Input

Waste (approx. lbs. per hr.)	1000
Initial Fill Volume	18 U.S. Gal.

Motor horsepower

Pulper	5
Water Extractor	2

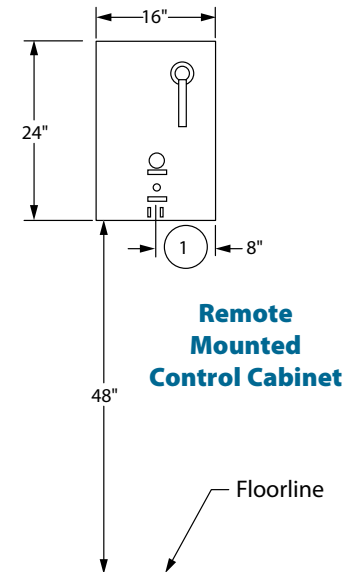
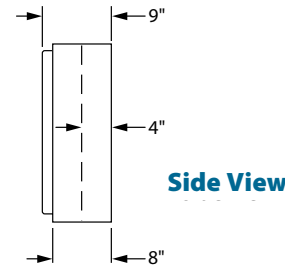
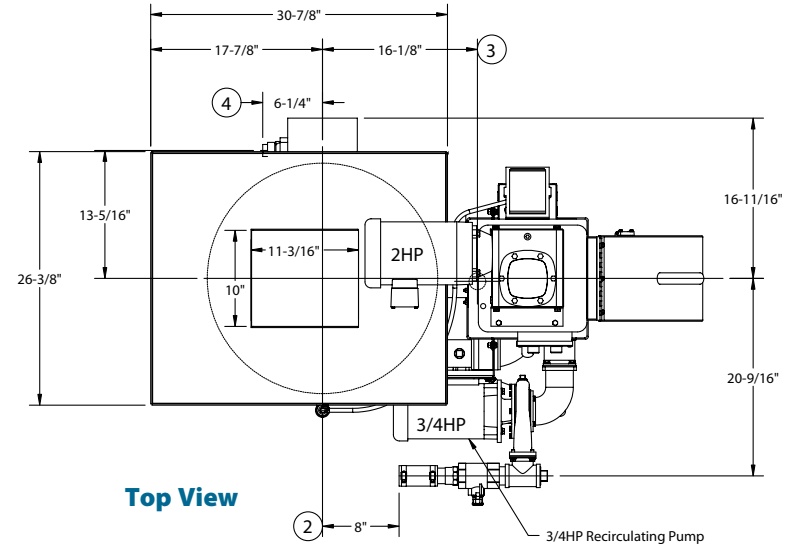
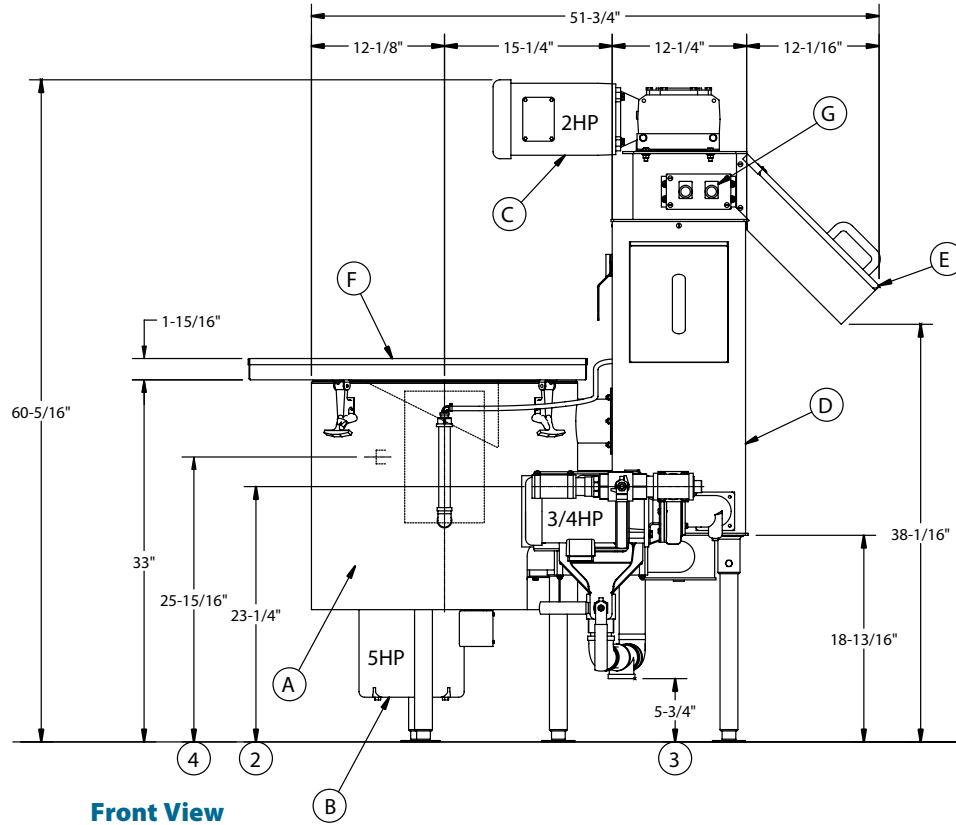
Slurry Chamber

Tank (in. dia.)	24
Cutting Disk (in. dia.)	12

Connections

Fresh water (in.)	1/2
Drain (in.)	1-1/2

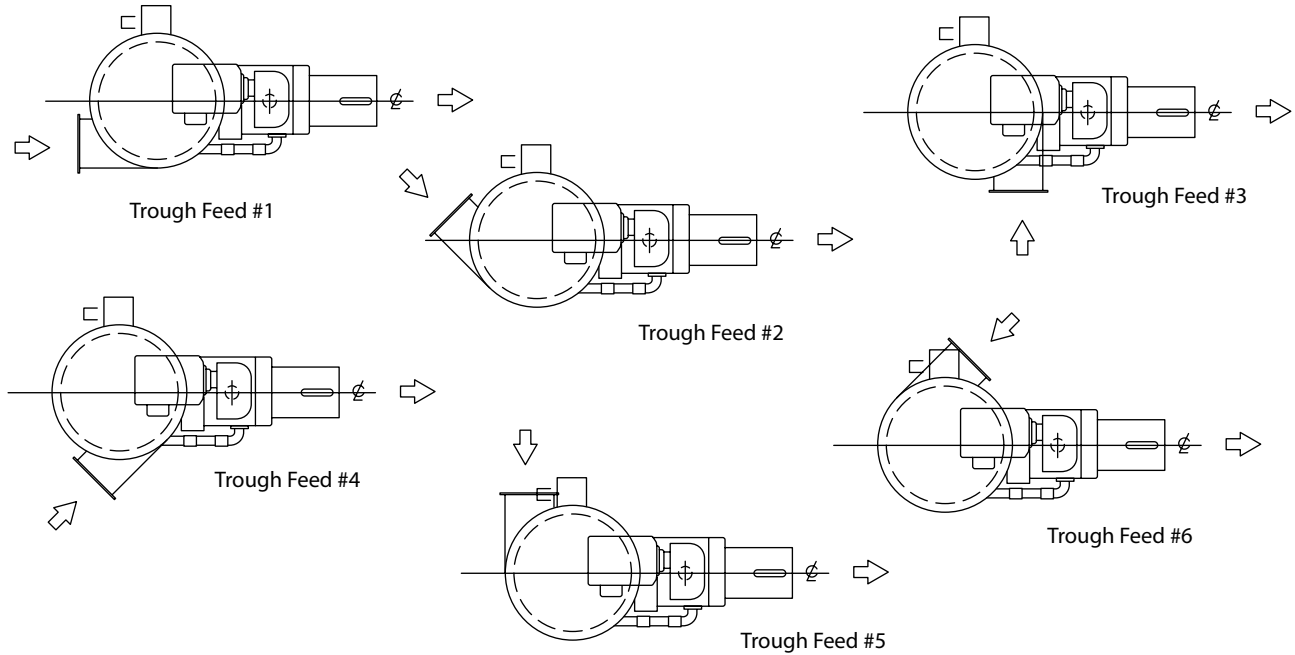
P5-24 with Optional Recirculating Pump Mounted on Front of Water Extractor



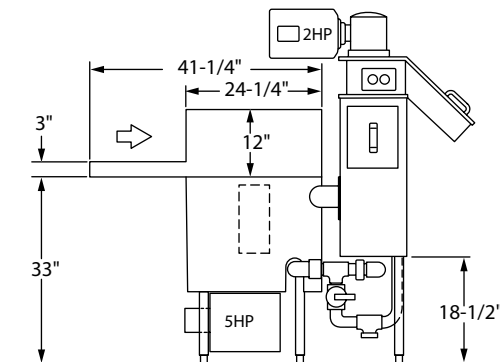
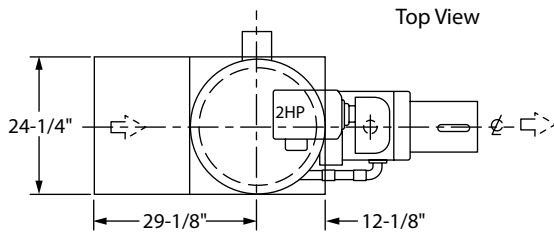
P5-24 w/ 3/4 Hp Recirculating Pump			
Elec. Specs.	Rated Amps	Minimum Supply Ckt. Conductor Ampacity	Maximum Overcurrent Protective Device
208/60/3	31	40	40
230/60/3	29	40	40
460/60/3	14	20	20

P5-24 w/o Recirculating Pump			
Elec. Specs.	Rated Amps	Minimum Supply Ckt. Conductor Ampacity	Maximum Overcurrent Protective Device
208/60/3	27	35	35
230/60/3	26	35	35
460/60/3	13	20	20

Due to an ongoing value analysis program at Champion, specifications contained in this catalog are subject to change without notice.

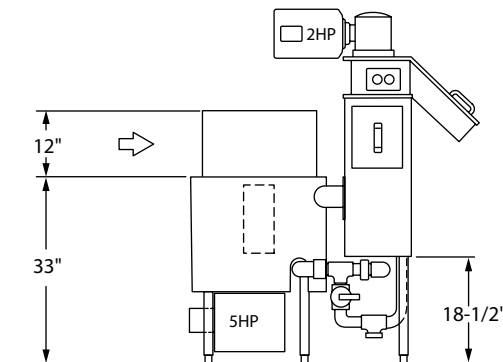
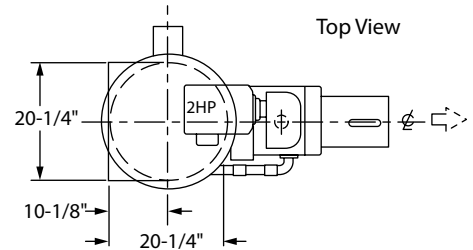


Feed Tray w/Hood



Front View

Under Table Feed Tray



Front View

Due to an ongoing value analysis program at Champion, specifications contained in this catalog are subject to change without notice.
'USGBC' and related logo is a trademark owned by the U.S. Green Building Council and is used by permission.