

Champion[®]

The Dishwashing Machine Specialists

PROJECT: _____

ITEM # _____ QTY: _____

MODEL # _____

AIA # _____ SIS # _____

RW-36

POT, PAN AND UTENSIL WASHER



Rendered image is for general visual representation only. Please refer to specifications for the latest detailed product information.

STANDARD FEATURES

- Heavy-Duty Stainless Steel Construction
- Self Contained Water Heater
- Removable Filter Basket
- Electrical Control Box
- Wash/Rinse Cycle 5 Minutes
- Automatic Fill
- Wash Cycle Selection Switch
- Loading Ramp Up To 8" Long Or Pit Grid
- Adjustable Wash And Rinse Cycles
- Electric, Infrared Gas Or Steam Heating
- Digital Control And Information Center
- Recirculating Wash Water
- Freshwater Sanitizing Rinse
- Easy To Clean, Dual Filtration System
- Moisture Resistant Control Gauges

OPTIONS & ACCESSORIES

- Second door and extended cabinet for pass thru operation
- External wash down hose
- Auto drain
- Steam extraction fan
- Fold-away ramp system
- Additional racks



SPECIFIER STATEMENT

Specified unit will be Champion Industries model RW-36 pot, pan and utensil washer. Features include four rotating hubs fitted with jet arms and high-velocity, fast cutting spray nozzles, wash/rinse cycle of 5 minutes, self contained water heater, fresh water sanitizing rinse, moisture resistant control gauges, and removable filter baskets.

1 year parts and labor warranty.

In the USA:

3765 Champion Blvd, Winston-Salem, NC 27105
Tel: (336) 661-1556 Fax: (336) 661-1979
www.championindustries.com

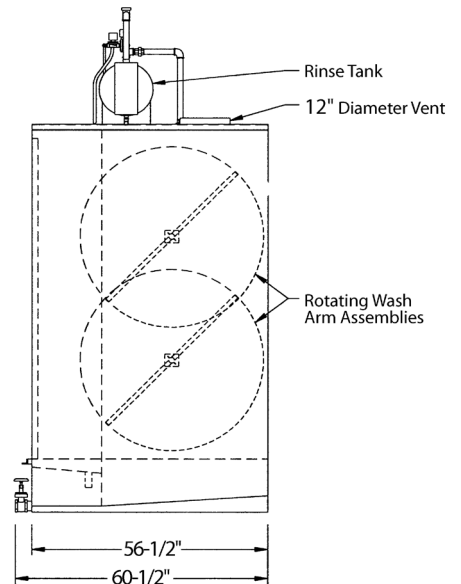
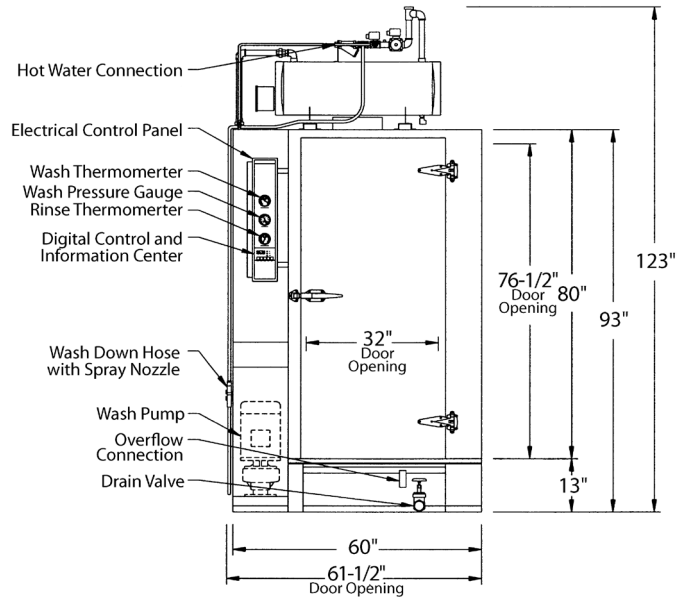
In Canada:

2674 N. Service Rd., Jordan Station, Ontario, Canada LORISO
Tel: (905) 562-4195 Fax: (905) 562-4618
www.championindustries.com/1canada

POT, PAN AND UTENSIL WASHER

SPECIFICATIONS

| | |
|---|---|
| Machine Construction | 12, 14, & 16 gauge stainless steel. All seams Heliarc welded. |
| Door | Double skinned stainless steel with exterior latch and inside release handle. |
| Spray Arm Assembly | Water driven, stainless steel spray arm assembly with stainless steel jets, removable end caps and hand operated quick release mechanism for easy cleaning and reassembly. Mounted on stainless steel base. |
| Filter | Perforated stainless steel screen type. Double filtration system for increase effectiveness and easy cleaning without emptying tank. |
| Water Pump | 15 Hp, 208/240/480 volt, 3 phase, 60 cycle with output of 250 gallons per minute at 35 to 45 PSI. |
| Digital Control & Information Center | 120 volt control circuit with push pad operation of "Power On", "Stop" and "Short, Medium or Long Wash Cycles". A digital display indicates "TIME REMAINING" for each cycle. LED's indicate wash, rinse and unload functions. A buzzer is also included to provide an audible indication of time to unload. A pre-programmed circuit board allows the push pad to be used as a "Diagnostic Center" by displaying "Error Codes" for ease of troubleshooting. |
| Gauges | Special moisture gauges measure wash temperature, and rinse temperature, wash jet pressure. |
| Wash Tank | Stainless steel with electric, infrared gas, steam or steam coil heating, thermostatically controlled, low water protected, sloped to drain with a 90-gallon capacity. |
| Racks | Stainless steel built to match specific washing requirements. |



| | |
|---|--|
| Washer | Automatic washing machine designed to wash and sanitize items commonly used in the bakery, meat, poultry, candy and food service industries. Machine is designed to be installed in a pit or used at floor level with a ramping system. |
| Cabinet | 60" wide x 56-1/2" deep x 93" high. Clearance height: 123" Standard door opening: 32" wide x 76-1/2" high. Wash chamber: 32" wide x 38-1/2" deep x 76-1/2" high. Constructed of 14 gauge, stainless steel. All seams tig-welded, cleaned and polished. |
| Door | Standard right hand or optional left hand swing constructed of 16 and 18 gauge, stainless steel with integral stainless steel frame work. Door double skinned for added strength. Equipped with door latch and inside release handle. Door is interlocked with limit switch to prevent machine operation while open. |
| Washer Floor | Floor constructed of 12 gauge stainless steel formed sheets to provide maximum strength. Floor supports constructed of 2" x 2" x 1/4" stainless steel angle. |
| Recirculating Wash Tank | Heated by 208/240 or 480 volt electric immersion heaters, 18 KW total, thermostatically controlled wash temperature with low water protection system. 90 gallon capacity (79 gallons if infrared heated), 14 gauge stainless steel, sloped to drain. Infrared gas and steam heating options available. |
| Filters | Perforated, stainless steel screen type. Double filter system for increased effectiveness and easy cleaning without emptying wash tank. |
| Wash Pump | 15 hp, 208/240 or 480 volt, 3 phase, 60 cycle. Close coupled; 250 gallons per minute at 35 to 45 PSI. |
| Rotating Wash Hub & Spray Arm Assembly | Water-driven stainless steel spray arm assembly with stainless steel jets, removable end caps and hand-operated, quick-release mechanism for easy cleaning and reassembly. |
| Sanitizing Rinse Tank | Stainless steel, 20 gallon capacity, 18 KW total. Uses 12 gallons per 30 second cycle. Infrared gas and steam heating options available, as well as pumped rinse system |
| Rinse Valve | Size 1" brass material, solenoid type, automatic. |
| Final Rinse Piping | Stainless steel tubing with brass compression fittings and full cone rinse jets. |
| Control And Information Center | 120 volt control circuit with push pad operation of "Power On," "Stop" and "Short, Medium or Long Wash Cycles." A digital display indicates "Time Remaining" for each cycle. LED's indicate wash, rinse and unload functions. A buzzer is also included to provide an audible indication when the machine is ready to unload. A pre-programmed circuit board allows the push pad to be used as a "Diagnostic Center" by displaying "Error Codes" for ease of troubleshooting. Moisture resistant gauges measure wash temperature, wash pressure and rinse temperature. |
| External Rinse Hose | Externally mounted rinse hose with spray gun for easy cleaning and maintenance of machine. |



The Dishwashing Machine Specialists

RW-36

POT, PAN AND UTENSIL WASHER SPECIFICATIONS

- Steam Exhaust Vent** Steam exhaust vent 12-7/8" diameter, consisting of 16 gauge rolled stainless steel, collar bolted to the top of the machine. Machine pre-wired with control timer for the addition of a fan.
- Optional Exhaust Fan** 12" diameter exhaust fan mounted on washer to extract steam after rinse cycle. Constructed for moisture laden air or other air stream contaminants. 500 CFM @ .5" static pressure. 1/4 hp, 1750 RPM.
- Racks** (1) stainless steel sheet pan rack, standard. For custom racks, contact factory. Constructed of stainless steel rod and formed angle, Heliarc welded. Supplied with stainless steel casters and nylon wheels.
- Connections**
 - Water Inlet: 120°F, 1" NPT
 - Water Drain: 2" NPT
 - Overflow: 1-1/4" NPT
 - Electrical: Single point connection
 - Steam Heating Option: 1/2" NPT
 - Natural or Propane Gas Heating Option: 1/2" NPT

Electrical Connections

575 voltage available in Canada

| Elec. Specs | Running Amps | | |
|-------------|--------------------------------|---------------------------|--|
| | Electric Wash Electric Booster | Steam Wash* Steam Booster | Infrared Gas Wash** Infrared Gas Booster |
| 208/60/3 | 141 | 41 | 41 |
| 240/60/3 | 126 | 39 | 39 |
| 480/60/3 | 64 | 20 | 20 |

* Steam Supply: Consumption: 195 lbs./hr. @ 15 psi minimum

** Gas Supply: Consumption: 150,000 BTU/hr. 1/2 lb. pressure minimum

Infrared Gas is a "Pumped Rinse"

In the USA: 3765 Champion Blvd, Winston-Salem, NC 27105 | Tel: (336) 661-1556 Fax: (336) 661-1979 | www.championindustries.com

In Canada: 2674 N. Service Rd., Jordan Station, Ontario, Canada LORISO | Tel: (905) 562-4195 Fax: (905) 562-4618 | www.championindustries.com/1canada

Rev. 11/2024 Printed in U.S.A.

Due to an ongoing value analysis program at Champion, specifications contained in this catalog are subject to change without notice.

