

Champion®

The Dishwashing Machine Specialists

Project _____
 Item No. _____
 Quantity _____

MODEL RW-66 WASHER

STANDARD FEATURES

- Heavy-duty stainless steel construction
- 25 Hp wash pump
- Easy to clean dual filtration system
- Adjustable wash and rinse cycles
- Choice of tanks heat: electric, infrared gas or steam
- Double skinned, hinged door design
- Digital Control & Information Center
- 66 sheet pan capacity
- Moisture resistant control gauges
- Self-contained water heater
- Recirculating wash water
- Fresh water sanitizing rinse
- Precision engineered spray patterns
- One year parts and labor warranty

MODEL RW-66

Cart, Cabinet, Rack and Pan Washer

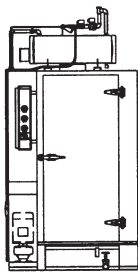


(Shown with optional fold-away ramp)

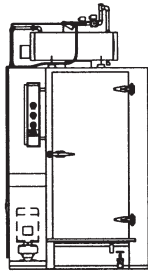
Photo is for general visual representation only. Please refer to specifications for the latest detailed product information.

OPTIONS

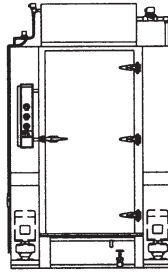
Additional Panwasher and Rackwasher Models:



RW-36



RW-54



RW-72

Champion Industries, Inc.
 3765 Champion Blvd., Winston-Salem, NC 27105
 Tel: 336/661-1556 Fax: 336/661-1979

2674 N. Service Road,
 Jordan Station, Ontario, Canada L0R 1S0
 Tel: 800/263-5798 Fax: 905/562-4618

www.championindustries.com

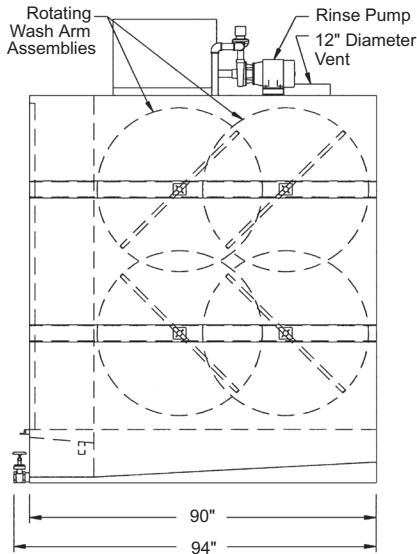
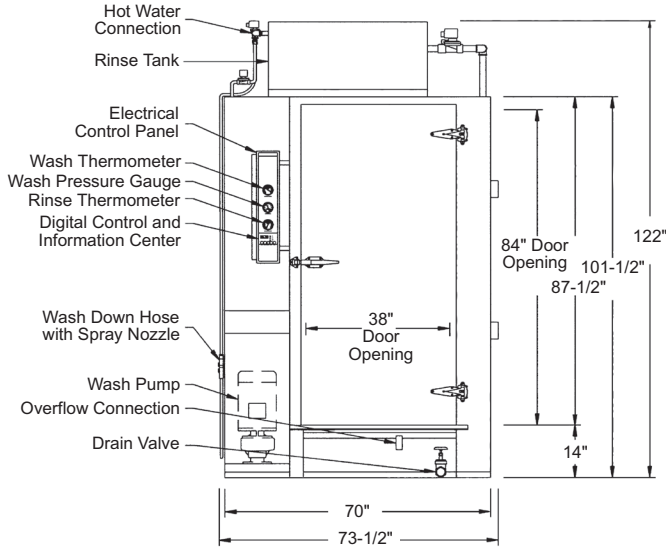
MODEL RW-66

Cart, Cabinet,
 Rack and Pan Washer

Champion®

The Dishwashing Machine Specialists

Dimensions shown in inches



SPECIFICATIONS

Machine Construction

12, 14, & 16 gauge stainless steel. All seams Tig welded.

Door

Double skinned stainless steel with exterior latch and inside release handle.

Spray Arm Assembly

Water driven, stainless steel, spray arm assembly with stainless steel jets, removable end caps and hand-operated, quick-release mechanism for easy cleaning and reassembly. Mounted on stainless steel base.

Filter

Perforated stainless steel screen type. Double filtration system for increased effectiveness and easy cleaning without emptying the tank.

Water Pump

25 H.P., 208/240/480 volt, 3 phase, 60 cycle with output of 430 gallons per minute at 40 to 50 P.S.I.

Digital Control & Information Center

120 volt control circuit with push pad operation of "Power On", "Stop" and "Short, Medium or Long Wash Cycles". A digital display indicates "Time Remaining" for each cycle. LED's indicate wash, rinse and unload functions. A buzzer is also included to provide an audible indication of time to unload. A pre-programmed circuit board allows the push pad to be used as a "Diagnostic Center" by displaying "Error Codes" for ease of troubleshooting.

Gauges

Moisture resistant gauges measure wash temperature, wash pressure and rinse temperature.

Wash Tank

Stainless steel with electric, gas, steam or steam coil heating, thermostatically controlled, low water protected, sloped to drain with a 180-gallon capacity.

Rinse Tank

Stainless steel with one electric, infrared gas or steam coil heating to provide 180°F/190°F hot sanitizing rinse.

Racks

Stainless steel built to match specific washing requirements.

Due to an ongoing value analysis program at Champion, specifications contained in this catalog are subject to change without notice.

Champion Industries, Inc., 3765 Champion Blvd., Winston-Salem, NC 27105 • 336/661-1556 • Fax: 336/661-1979 • www.championindustries.com
 2674 N. Service Road, Jordan Station, Ontario, Canada L0R 1S0 • 800/263-5798 • Fax: 905/562-4618



The Dishwashing Machine Specialists

SPECIFICATIONS

MODEL RW-66 RACK, PAN & UTENSIL WASHER

Washer	Automatic washing machine designed to wash and sanitize items commonly used in the bakery, meat, poultry, candy and food service industries. Machine is designed to be installed in a pit or used at floor level with a ramping system.
Cabinet	70" wide x 90" deep (100" with pass through option) x 101-1/2" high. Clearance height: 122" when floor mounted, 108" when used in a pit. Standard door opening: 38" wide x 84" high. Wash chamber: 38" wide x 72" deep x 84" high. Constructed of 12, 14 & 16 gauge, stainless steel. All seams tig-welded. Seams, where needed for water tight construction are continuously welded.
Door	Standard right hand or optional left hand swing constructed of 14 and 16 gauge, stainless steel with integral stainless steel framework. Door double skinned for added strength. Equipped with door latch and inside release handle. Door is interlocked with limit switch to prevent machine operation while open.
Washer Floor	Floor constructed of 12 gauge stainless steel formed sheets designed to provide maximum strength. Floor supports constructed of 2" x 2" x 1/4" stainless steel angle.
Recirculating Wash Tank	Heated by 208/240 or 480 Volt electric immersion heaters, 42 kW total, thermostatically controlled wash temperature with low water protection system. 180 gallon capacity. 14 gauge stainless steel, sloped to drain. Gas and steam heating options available.
Wash Tank Filter	Perforated, stainless steel baskets. Designed for increased effectiveness and easy cleaning without emptying wash tank.
Wash Tank Fill Valve	Size 3/4" brass material, solenoid type for automatic.
Wash Tank Drain Valve	Size 2" brass material, gate type for manual or electrically operated ball valve for automatic option.
Wash Pump	25 H.P., 208/240 or 480 volt, 3 phase, 60 cycle. Close coupled; 430 gallons per minute at 40 to 50 psi, mounted on 12 gauge stainless steel formed channel base.
Rotating Wash Hub & Spray Arm Assembly	Water driven, stainless steel spray arm assembly with stainless steel jets removable end caps and hand operated quick release mechanism for easy cleaning and reassembly. Mounted on stainless steel base.
Sanitizing Pumped Rinse Tank	Stainless steel, 14 gauge, 60 gallon capacity, supplied with 1-1/2 H.P. pump to provide 20 gallons of 180°/190°F. hot sanitizing rinse per 30 second cycle at 20 P.S.I. Thermostatically controlled, low water protected with automatic fill. Available in electric, gas or steam coil heating.
Final Rinse Piping	Stainless steel tubing with brass compression fittings and brass or optional stainless steel full cone rinse jets.
Control & Information Center	120 volt control circuit with push pad operation of "Power On," "Stop" and "Short, Medium or Long Wash Cycles." A digital display indicates "Time Remaining" for each cycle. LED's indicate wash, rinse and unload functions. A buzzer is also included to provide an audible indication when the machine is ready to unload. A preprogrammed circuit board allows the push pad to be used as a "Diagnostic Center" by displaying "Error Codes" for ease of troubleshooting. Moisture resistant gauges measure Wash Temperature, Wash Pressure and Rinse Temperature.
Optional Rinse Hose	Externally mounted rinse hose with spray gun for easy cleaning and maintenance of machine.

Steam Exhaust Vent

Steam exhaust vent 12-7/8" diameter, consisting of 14 gauge rolled stainless steel, collar mounted to the top of the machine. Machine pre-wired with control timer for the addition of a fan.

Optional Exhaust Fan

12" diameter exhaust fan mounted on washer to extract steam after rinse cycle. Constructed for moisture laden air or other air stream contaminants. 500 CFM @ .05" static pressure. 1/4 H.P., 1750 RPM.

Optional Hood & Fan

Stainless steel hood and fan assembly, mounted over door to evacuate steam that escapes when door is opened. Fan specification is same as above.

Racks

(1) stainless steel sheet pan rack, standard. For custom racks, contact factory. Constructed of stainless steel and formed angle, mig welded. Supplied with stainless steel casters and nylon wheels.

Connections

Water Inlet: 120° F, 1" NPT
 Water Drain: 2" NPT
 Overflow: 1-1/4" NPT
 Electrical: Single point connection
 Steam Heating Option: 3/4" NPT
 Natural/Propane Gas Heating Option: 3/4" NPT

Electrical Connections

575 voltage available in Canada

Elec. Spec.	Running Amps		
	Electric Wash Electric Booster	Steam Wash ¹ Steam Booster	Infrared Gas Wash ² Infrared Gas Booster
208 Volt 3 phase	307	74	74
240 Volt 3 phase	279	69	69
480 Volt 3 phase	141	36	36

¹ Steam Supply: Consumption: 345 lbs./hr. @ 15 psi minimum

² Gas Supply: Consumption: 360,000 BTU/hr.

Certifications

UL and UL Sanitation Listed (all). CUL Listed (electric and steam only).