

Champion[®]

The Dishwashing Machine Specialists

Project _____
Item No. _____
Quantity _____

SSG

STANDARD FEATURES

- Up to 850 lbs. of waste processing per hour
- Automatic drain
- Low water consumption
- 70% noise reduction compared to a pulper
- Auto reversing anti-jam safety
- Automated wash-down cycle
- Configurable for most applications
- Closed-coupled or remote designs
- Built-in safety shutdown sensors
- Stainless steel base and frame
- UL 508A Certified Control Cabinet



Cutting Teeth, Through Trough Connection



Cutting Teeth, Through Access Door



Inside View of Water Extractor

SSG

Slow Speed Grinder
Food Waste Reduction System



Photo is for general visual representation only. Please refer to specifications for the latest detailed product information.



SPECIFIER STATEMENT

Specified unit will be Champion model SSG Closed-Coupled waste handling system or SSG-R Remote waste handling system.

A maximum 850 lbs processing per hour of food service waste including scraps, paper, plastic, Styrofoam, and cardboard.

1 year parts and labor warranty

Champion Industries, Inc.
3765 Champion Blvd., Winston-Salem, NC 27105
Tel: 336/661-1556 Fax: 336/661-1979
Championindustries.com

Champion®

The Dishwashing Machine Specialists

SSG

Slow Speed Grinder
Food Waste Reduction System

Weight: 550 lbs

Dimensions shown in inches

SPECIFICATIONS

Capacities

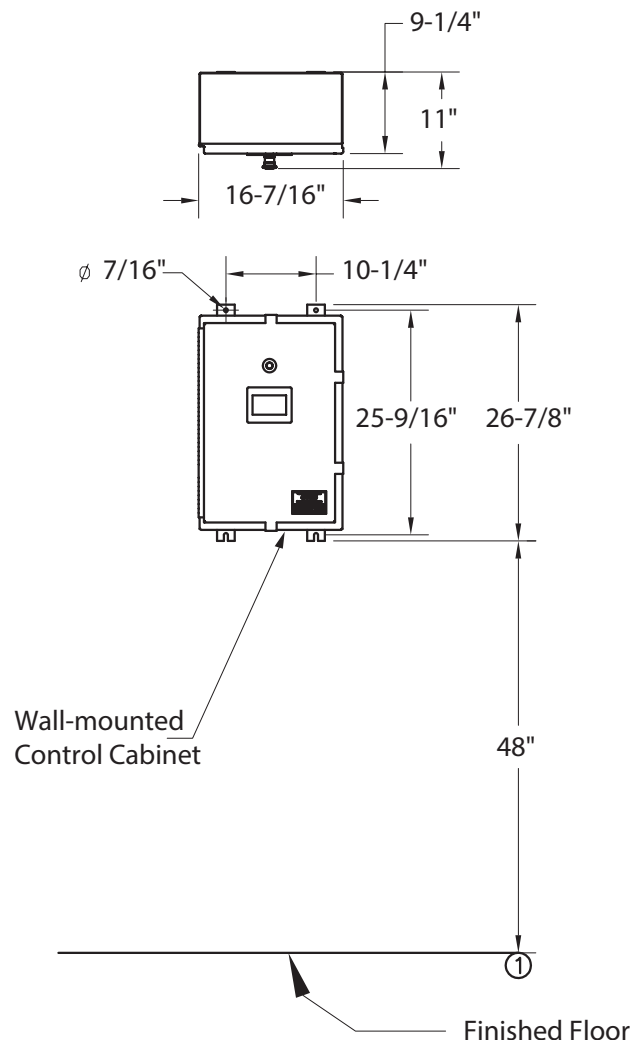
Slurry Tank	22 U.S. Gal.
Initial Fill	24 U.S. Gal.
Water Extractor	24 U.S. Gal.

Motor horsepower

Grinder Drive Motor	5 HP
Slurry Pump Motor	2 HP
Extractor Drive Motor	2 HP
Recirculation Pump Motor	2 HP

Utilities		Voltage	Machine Load Amps	Minimum Wire Ampacity	Maximum Time Delay Fuse
1	Electrical See chart				
2	Drain 2" NPT – Slurry Tank Drain	208/60/3	34	45	45
3	Drain 2" NPT – Extractor Drain	230/60/3	33	45	45
4	Drain 1/2" NPT – Backflow Preventer	460/60/3	17	25	25
5	Recirculation to Trough Supply – 1-1/2" NPT	Warning: Plumbing and electrical connections should be made by qualified personnel who will observe all the applicable plumbing, sanitary and safety codes and the National Electrical Codes. Note: Water Hammer Arrestor (meeting ASSE-1010 standard or equivalent) to be supplied (by others) in common water supply line at service connection.			
6	Trough Supply – 1-1/2" NPT				
7	Cold Water – 3/4" NPT				
8	Hot Water (110°-140°) 1/2" NPT – 20 psi				

A	Grinder Drive Motor 5 Hp
B	Slurry Pump Motor 2 Hp
C	Extractor Drive Motor 2 Hp
D	Recirculation Pump Motor 2 Hp
E	Slurry Tank
F	Water Extractor
G	Solids Discharge Chute
H	Start/Stop Station Mounted on Scrap Trough
I	Grabber Magnets (Qty 2) Mounted on Scrap Trough



Control Cabinet Detail

Due to an ongoing value analysis program at Champion, specifications contained in this catalog are subject to change without notice.

Champion Industries, Inc., 3765 Champion Boulevard, Winston-Salem, NC 27105 • 336/661-1556 • Fax: 336/661-1979 • www.championindustries.com

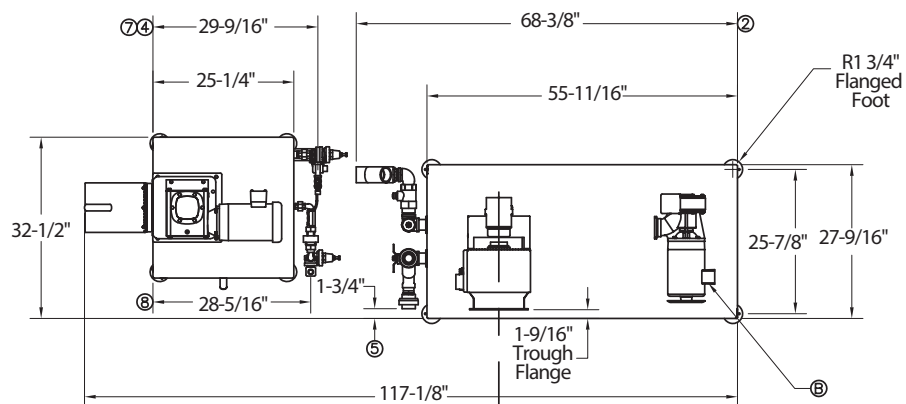


Slow Speed Grinder
Food Waste Reduction System

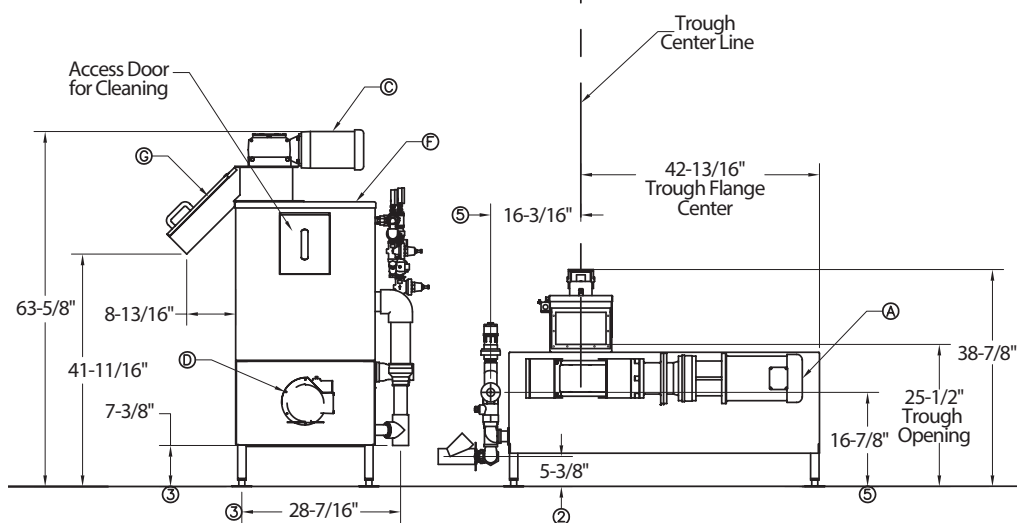
Champion[®]

The Dishwashing Machine Specialists

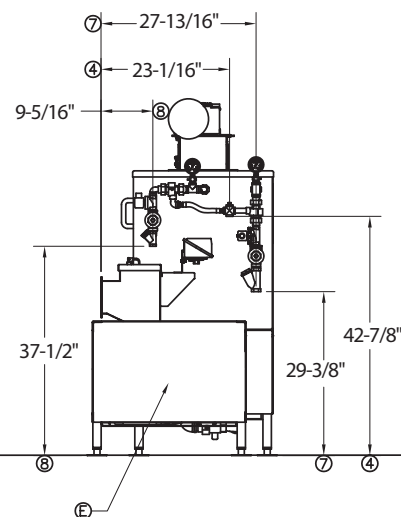
Dimensions shown in inches



Top View



Side View



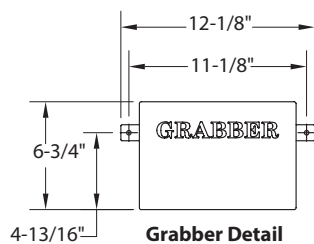
End View

Due to an ongoing value analysis program at Champion, specifications contained in this catalog are subject to change without notice.

Champion Industries, Inc., 3765 Champion Boulevard, Winston-Salem, NC 27105 • 336/661-1556 • Fax: 336/661-1979 • www.championindustries.com

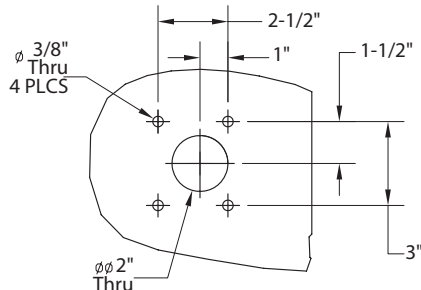
Weight: 550 lbs

Dimensions shown in inches

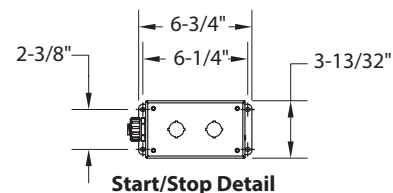


Grabber Detail

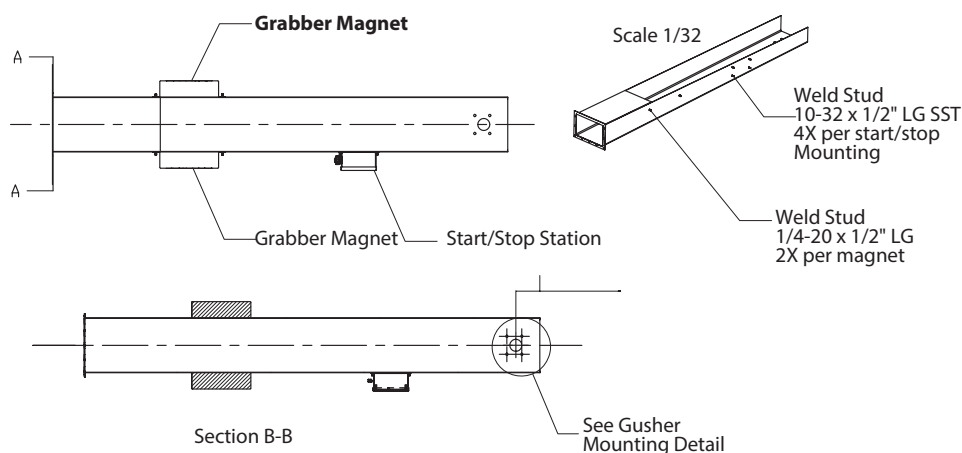
These are supplied parts



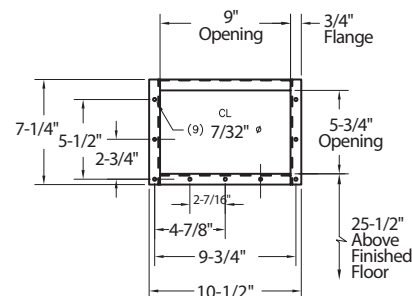
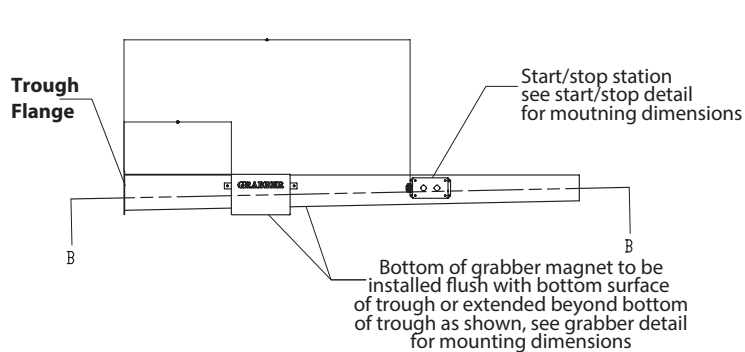
Gusher Mounting Detail



Start/Stop Detail



Trough is not supplied with this unit unless part of a BiLine Conveyor System design

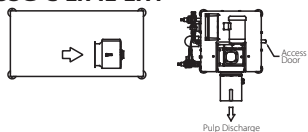


9" Trough Flange Detail

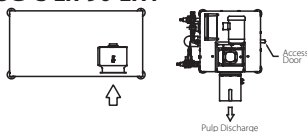
Sample Trough Configurations and Feed Methods

For additional trough configurations and feed methods, contact Factory

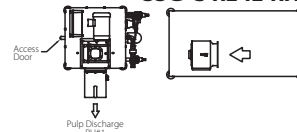
SSG-C-LR-IL-LH1



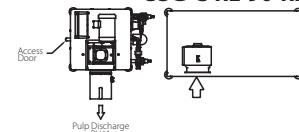
SSG-C-LR-90-LH1



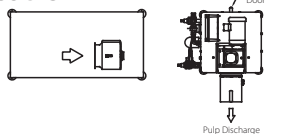
SSG-C-RL-IL-RH1



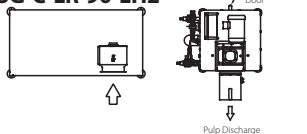
SSG-C-RL-90-RH1



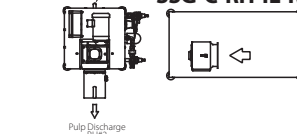
SSG-C-LR-IL-LH2



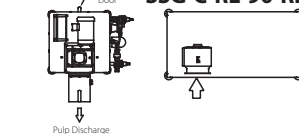
SSG-C-LR-90-LH2



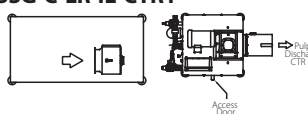
SSG-C-RL-IL-RH2



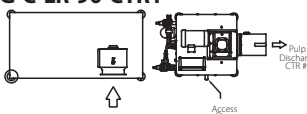
SSG-C-RL-90-RH2



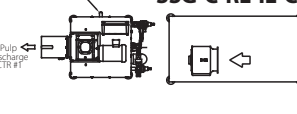
SSG-C-LR-IL-CTR1



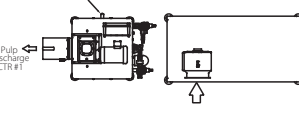
SSG-C-LR-90-CTR1



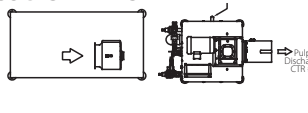
SSG-C-RL-IL-CTR1



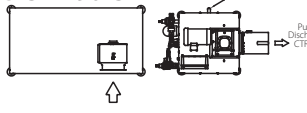
SSG-C-RL-90-CTR1



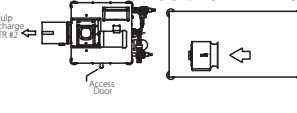
SSG-C-LR-IL-CTR2



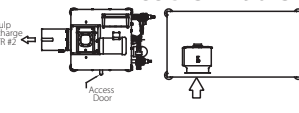
SSG-C-LR-90-CTR2



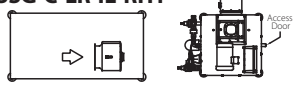
SSG-C-RL-IL-CTR2



SSG-C-RL-90-CTR2



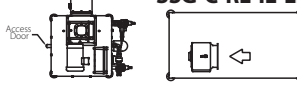
SSG-C-LR-IL-RH1



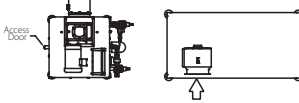
SSG-C-LR-90-RH1



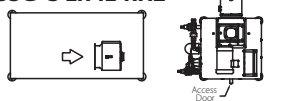
SSG-C-RL-IL-LH1



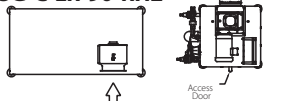
SSG-C-RL-90-LH1



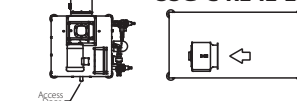
SSG-C-LR-IL-RH2



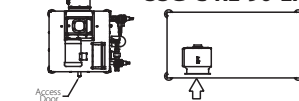
SSG-C-LR-90-RH2



SSG-C-RL-IL-LH2



SSG-C-RL-90-LH2



SPECIFIER NOTES

- Each SSG system is custom built to order. Custom P+E drawing provided by factory only after site survey performed by qualified Champion representative.
- When SSG system is configured with a BiLine trough system, grabber magnets, remote start/stop switch, and trough gusher components will come pre-installed.
- If trough system is by others, supplied grabber magnets, start/stop switch, and trough gushers will be supplied by Champion.
- If trough system by others and grabber magnets are found to not be installed, Champion reserves the right to void warranty.
- Trough assembly is not included with the SSG-C or SSG-R system. Trough is either supplied by others or included as part of a system by BiLine Conveyor Systems. If trough is supplied by BiLine, start/stop switch and gusher head will be factory installed.

ATTENTION

**THIS EQUIPMENT IS DESIGNED ONLY FOR FOOD WASTE REDUCTION.
(NAPKINS, PAPER TOWELS AND CARDBOARD ARE ACCEPTABLE.)**

! WARNING !

**DO NOT LOAD FLATWARE, SERVICE WARE, PLASTICS, LARGE BONES,
RAW BONES, (SHELLS: CLAM, OYSTER, MUSSEL, SHRIMP, CRAB,
LOBSTER, SCALLOP, WALNUT, PEANUT, PECAN, ALMOND OR
ANY OTHER TYPE OF SHELL NOT LISTED), WOOD, RAGS.**

**DO NOT DUMP BULK QUANTITIES FROM TUBS ,GARBAGE CANS,
OR OTHER LARGE CONTAINERS DIRECTLY INTO THE MACHINE OR
FEED TROUGHS.**

Due to an ongoing value analysis program at Champion, specifications contained in this catalog are subject to change without notice.
Champion Industries, Inc., 3765 Champion Blvd., Winston-Salem, NC 27105
336/661-1556 • Fax: 336/661-1979 • ChampionIndustries.com