

Champion®

The Dishwashing Machine Specialists

PROJECT: _____

ITEM # _____ QTY: _____

MODEL # _____

AIA # _____ SIS # _____

UH 140B

UNDERCOUNTER HIGH TEMPERATURE



Rendered image is for general visual representation only. Please refer to specifications for the latest detailed product information.

OPTIONS & ACCESSORIES

- ☐ Additional Dish Racks
 - ☐ Peg
 - ☐ Flat
- ☐ **17" Stand** Stainless Steel
- ☐ **6" Stand** Stainless Steel
- ☐ 6 kW High Speed **Rise Booster**
- ☐ **1" Roller Kit** available (includes 4 casters)
- ☐ **Champion ION scale prevention system**
- ☐ **Drain water tempering kit** (unmounted)

STANDARD FEATURES

- **ENERGY STAR® Qualified**
Energy efficient – 30 amp. breaker with 4 kW booster heater (optional 6 kW – high speed available)
- **Low 0.84 US gal. (0.7 imp.gal/3.2l) water usage per rack**
- **120 second cycle time. 30 racks per hour capacity**
- **Bright LCD Control Display**
clearly identifies temperature, cycle time and state of operation
- **Auto Clean**
washes chamber at shutdown
- **Advanced Service Diagnostics**
designed to reduce operating costs
- **Fill Guard**
monitors incoming water pressure to ensure proper fill level and rinse performance
- **Drain Guard**
auto drain that monitors and ensures proper draining of machine
- **Rinse Guard**
ensures proper 180°F /82°C final rinse temperature
- **Solid state controls**
- **Robust, counter-balanced, double skin door**
- **Double wall tank construction for quiet operation**
- **All standard-peristaltic liquid detergent and rinse-aid dispensing pumps, top and side panels, 2 kW tank heater, flexible fill and drain lines with water strainer and pressure regulating valve for trouble-free operation**
- **Complete with one peg and one flat bottom rack (20" x 20" / 508mm x 508 mm)**

SPECIFIER STATEMENT

Specified unit will be a fresh water rinse type high temperature undercounter dishwashing machine with built-in booster.

Machine will be equipped with: LCD temperature readouts and cycle progress indicators. It will feature a fill guard device to ensure proper fill and rinse performance as well as a drain guard to monitor and ensure proper draining of the machine. It will have an automatic pumped drain and an auto-clean feature that washes the chamber at shutdown.

Machine will have standard liquid detergent and rinse-aid dispensing pumps as well as a rinse-sentry feature to ensure proper 180°F final rinse temperature.

1 year parts and labor warranty.

Note: Always follow local building code guidelines.



In the USA:

3765 Champion Blvd, Winston-Salem, NC 27105
Tel: (336) 661-1556 Fax: (336) 661-1979
www.championindustries.com

In Canada:

2674 N. Service Rd., Jordan Station, Ontario, Canada L0R1S0
Tel: (905) 562-4195 Fax: (905) 562-4618
www.championindustries.com/icanada

SPECIFICATIONS

Capacities

*Racks per hr.	30
Cycle time (seconds)	120

Motor Horsepower

Wash	1
------	---

Water Consumption

U.S. Gal./Imperial Gal. (Max. use) per hr.	20.1 (16.7/76)
U.S. Gal./Imperial Gal. per rack	0.84 (0.7/3.2)

Temperature °F/°C

Wash	150/66
Rinse	180/82

Heating

Tank heat, electric, (kW)	2
Electric booster, (kW)	4/6

Time Cycle in seconds

Wash	100
Rinse	15
Dwell	5
Total cycle	120

Standard 20" x 20" Rack Complement

Dish	1
Open	1

UH140B with 4 kW Electric Rise Booster

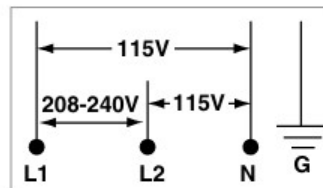
Elec. Specs	Rated Amps	Minimum Supply Ckt. Conductor Ampacity	Maximum Overcurrent Protective Device
208/60/1	22	30	30
240/60/1	24	30	30

UH140B with 6 kW Electric Rise Booster

Elec. Specs	Rated Amps	Minimum Supply Ckt. Conductor Ampacity	Maximum Overcurrent Protective Device
208/60/1	29	40	40
240/60/1	31	40	40

Utilities

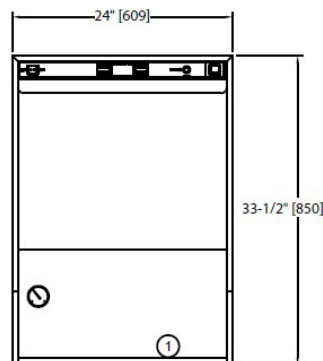
1 Electrical 208-240/60/1; 3 wire + ground; hard wiring required
2 Hot Water 114°F/60°C Min recommended, connection for 4 kW rise booster. 110°F/43°C Min., connection for 6 kW rise booster. 5 ft. long 1/2" I.D. flexible fill hose with 3/4" FNPT connection. Flow pressure: 18-22 psi (124-152 kPa), PRV supplied standard.
3 Drain Connection 6 ft. long, 3/4" I.D. flexible hose supplied with machine Max. drain flow: 8 US gpm; 7 imp gpm



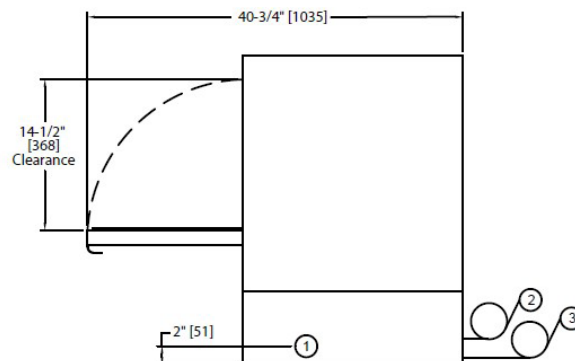
***Note:** Electrical supply service must be a 3-wire plus ground for connection as shown.

Warning: Plumbing, electrical connections should be made by qualified personnel who will observe all the applicable plumbing, sanitary and safety codes and the National Electrical Code.

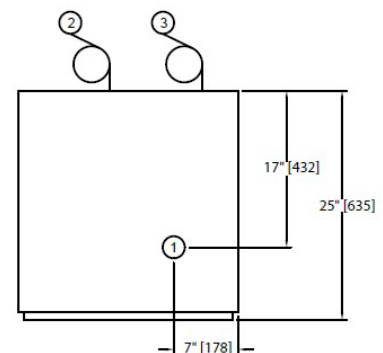
*Excludes 30 second NSF load/unload time



Front View



Side View



Plan View

***Note:** Allow additional 3" clearance from wall.

In the USA: 3765 Champion Blvd, Winston-Salem, NC 27105 | Tel: (336) 661-1556 Fax: (336) 661-1979 | www.championindustries.com

In Canada: 2674 N. Service Rd., Jordan Station, Ontario, Canada L0R1S0 | Tel: (905) 562-4195 Fax: (905) 562-4618 | www.championindustries.com/Canada